

Tokai National Higher Education and Research System

Gifu University

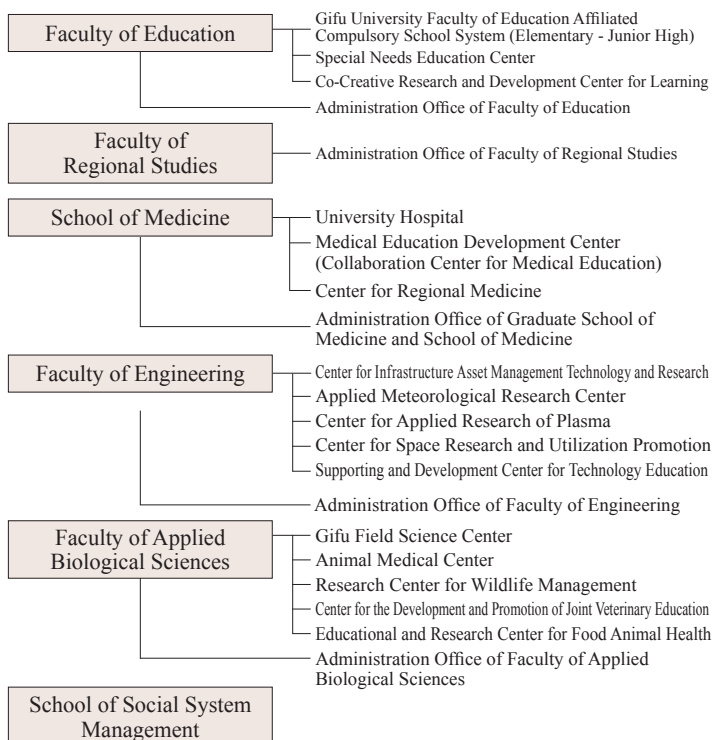
Nagoya University

President

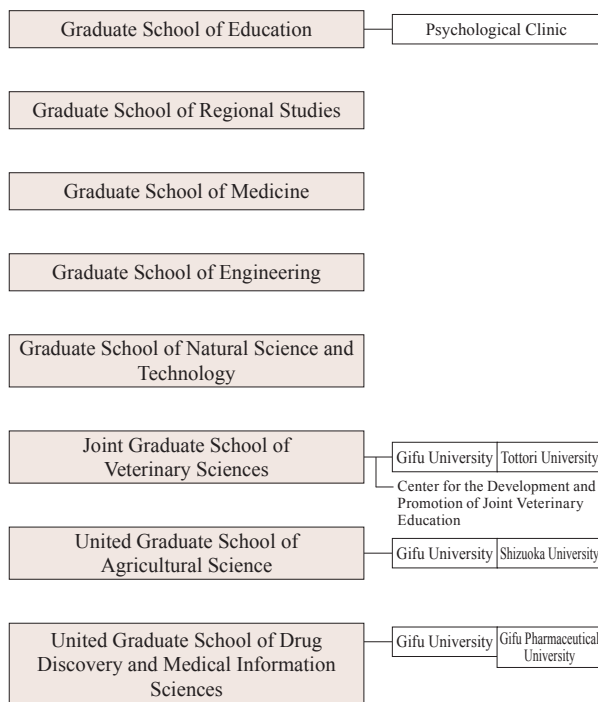
Vice President

Academic and Administrative Organization

Faculties and Schools



Graduate Schools



Institute for Advanced Study

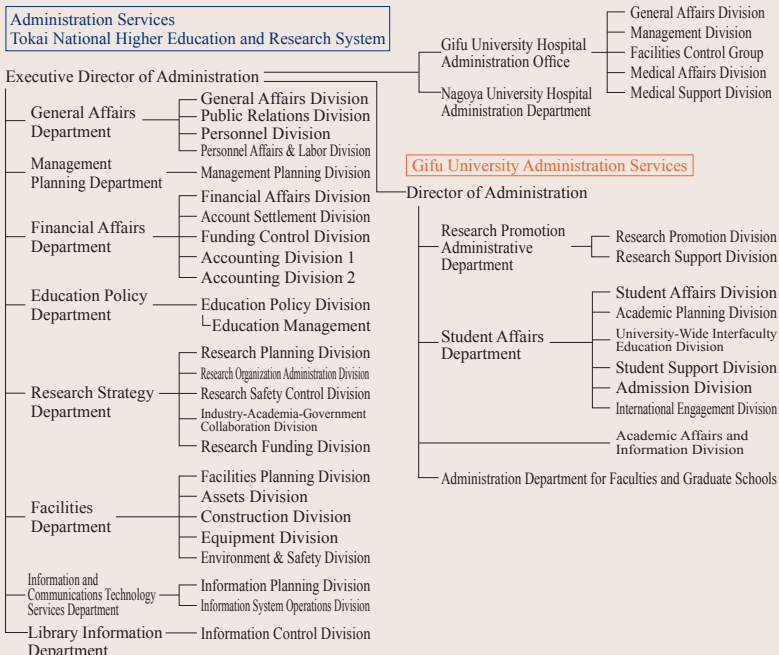
River Basin Research Center

Institute for Glyco-core Research (iGCORE)

Health Administration Center

Center for Collaborative Study with Community

Administration Organization



Administration Support Organization



■ Faculty / School

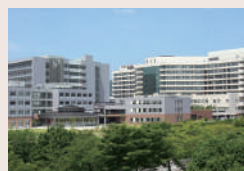
Education (1 Training Course, 12 Courses)	Training Course for School Teachers	Courses	National Language Education, Social Studies Education, Mathematics Education, Science Education, Music Education, Art Education, Health and Physical Education, Technology Education, Home Economics Education, English Education, School Education, Special Needs Education.
		Affiliated Institutions	Special Needs Education Center
			Co-Creative Research and Development Center for Learning Gifu University Faculty of Education Affiliated Compulsory School System (Elementary-Junior High)
Regional Studies (2 Departments, 4 Domains)	Department of Policy Studies	Domains	Regional Policy, Environmental Studies
	Department of Cultural Studies		Cultural Studies, Regional Structure
School of Medicine (2 Courses)	Medical Course	Tutorial Courses	Physiology, Biochemistry, Human Body, Neuroanatomy & Neuroscience, Microbiology, Pharmacology & Toxicology, Pathology, Cardiology & Respiratory & Nephrology & Urology, Gastroenterology & Hematology & Laboratory Medicine, Endocrine & Metabolic System, Neurology, Child Health & Reproduction & Gynecology, Bioethics & Legal Medicine, Clinical Genetics & Ethics, Dermatology, Clinical Immunology, Eye & Ear & Nose & Throat, Locomotor System, Anesthesiology & Emergency Medicine, Diagnostic Imaging & Radiation Oncology, Psychiatry, Community & Occupational Health
	Nursing Course	Courses	Integrated Basic Sciences, Regional Lifelong Development Nursing, Community Health Support Nursing
		Affiliated Institutions	University Hospital
			Medical Education Development Center (Collaboration Center for Medical Education) Center for Regional Medicine
Engineering (4 Departments, 9 Courses)	Department of Civil Engineering	Courses	Environmental Studies, Disaster Reduction Studies
	Department of Mechanical Engineering		Mechanical Engineering, Intelligent Mechanical Engineering
	Department of Chemistry and Biomolecular Science		Materials Chemistry, Biomolecular Science
	Department of Electrical, Electronic and Computer Engineering		Electrical and Electronic, Informatics, Applied Physics
		Affiliated Institutions	Center for Infrastructure Asset Management Technology and Research
			Applied Meteorological Research Center Center for Applied Research of Plasma Center for Space Research and Utilization Promotion Supporting and Development Center for Technology Education
Applied Biological Sciences (2 Courses, 1 Department)	Course of Applied Life Science	Sub-Courses	Molecular Life Science, Life Science for Food
	Course of Agricultural and Environmental Science		Plant Production, Animal Science, Environmental Science and Ecology
	Joint Department of Veterinary Medicine	Affiliated Institutions	Gifu Field Science Center
			Animal Medical Center
			Research Center for Wildlife Management Center for the Development and Promotion of Joint Veterinary Education Education and Research Center for Food Animal Health
School of Social System Management			



Faculty of Education



Faculty of Regional Studies



School of Medicine /
University Hospital



Faculty of Engineering /
Faculty of Applied Biological Sciences



School of Social System Management

■ Graduate School

Education	Professional Degree Program	Teacher Education Course	Courses	School Administrators Prepare Course, Education Practice Development, Teaching Ability Development Course			
	Master's Program	Course of Clinical Psychology for Education					
Regional Studies	Master's Program	Policy Studies	Areas	Socioeconomics, Public Administration and Policy, Environmental Studies			
		Cultural Studies		Society, Culture			
Medicine	Doctoral Program	Medical Sciences	Divisions	Courses	Biological Principles	Anatomy, Physiology, Molecular Pathobiochemistry, Neurobiology, Pharmacology, Stem Cell and Regenerative Medicine	
					Functional Biology	Morphological Neuroscience, Cell Signaling, Pathology and Translational Research, Legal Medicine, Laboratory of Molecular Design and Synthesis	
					Biomedical Networks	Parasitology and Infectious Diseases, Microbiology, Tumor Pathology, Epidemiology and Preventive Medicine, Biomedical Ethics and Social Medicine, Occupational Health, Medical Education, Health Economics, Systems Biology	
					Internal Medicine	Gastroenterology, Clinical Oncology, Cardiology, Respiratory, Hematology-Infectious Disease, Diabetes, Endocrinology and Metabolism, Rheumatology and Clinical Immunology, Nephrology, General Medicine and General Internal Medicine	
					Surgery	Cardiovascular Surgery, General Thoracic Surgery, Gastroenterological Surgery-Pediatric Surgery, Breast Surgery	
					Neuroscience	Neurology, Neurosurgery, Clinical Brain Sciences, Psychiatry	
					Sensorimotor Medicine	Orthopaedic Surgery, Rehabilitation, Dermatology, Plastic and Reconstructive Surgery, Ophthalmology, Otolaryngology-Head and Neck Surgery, Oral and Maxillofacial Surgery	
	Master's Program	Nursing Science	Divisions	Courses	Nursing Education	Specialty Areas	Nursing Education
					Integrated Basic Sciences		Functional Bioscience, General Science and Arts
					Regional Lifelong Development Nursing		Maternal Nursing, Child Health Nursing, Acute Care Nursing, Chronic Care Nursing, Gerontological Nursing
Community Health Support Nursing	Community Health Nursing, Mental Health Nursing						
Master's Program	Health Professions Education	Divisions	Health Professions Training and Development, Health Professions Program Development, Biomedical Ethics and Social Medicine Education, General Internal Medicine, Regional Medicine Education, Physician Clinical Training				
Doctoral Program	Department of Integral Medicine	Department of Integral Medicine	Department of Cardio-Renal and Respiratory Advanced Medicine (Gifu Welfare Federation of Agricultural Cooperatives), Division for Regional Cancer Control (Gifu Welfare Federation of Agricultural Cooperatives), Frontier Science for Regional Medicine and Musculoskeletal Science (Sekigahara Town), Advanced Joint Reconstructive Surgery (KYOCERA Medical Corporation, Biomet Japan, Inc., Smith & Nephew plc), Department of Advanced Image Development (Gifu Welfare Federation of Agricultural Cooperatives), Department of Minimally Invasive Cancer Therapy (Gifu Welfare Federation of Agricultural Cooperatives, MIYARISAN PHARMACEUTICAL CO. LTD., Sekigahara Town), Department of community-based Radiology (Japanese Red Cross Takayama Hospital), Department of Abuse Prevention Emergency Medicine (Gifu City Hospital), Department of Infection Control (Gifu Prefecture), Department of Preventive Treatment of Locomotive Syndrome (Gifu Welfare Federation of Agricultural Cooperatives), Department of Clinical Anatomy Development Studies (Gifu Welfare Federation of Agricultural Cooperatives), Department of Clinical Genomics (Chubu Yakuin Co., Ltd.), Department of Early Diagnosis and Preventive Medicine for Rare Intractable Pediatric Diseases (Gifu Research Center for Public Health), Department of Perioperative Pain Control and Human Resources Development in Perioperative Medicine (Gifu Welfare Federation of Agricultural Cooperatives), Department of Cancer Advanced Treatment and International Region Support (Koseikai Social Medical Corporation)				
			Joint Research Course	Phage Biologics Research Course (Astellas Pharma Inc.)			
Engineering	Doctoral Program	Department of Engineering Science					
		International Joint Department of Integrated Mechanical Engineering between Indian Institute of Technology Guwahati and Gifu University					
		International Joint Department of Materials Science and Engineering between National University of Malaysia and Gifu University					
Natural Science and Technology	Master's Program	Department of Life Science and Chemistry	Courses	Chemistry and Drug Discovery, Molecular Life Science, Life Science for Food			
		Department of Agricultural and Environmental Science		Plant Production, Animal Science, Environmental Science and Ecology			
		Department of Civil and Environmental Engineering		Environment Studies, Disaster Reduction Studies			
		Department of Materials Science and Procession		Materials Chemistry, Materials Processing			
		Department of Intelligence Science and Engineering		Intelligent Mechanical Engineering, Informatics, Applied Mathematics and Physics			
		Department of Energy Engineering		Energy Conversion, Electrical and Energy System Engineering			
International Joint Department of Food Science and Technology between Indian Institute of Technology Guwahati and Gifu University							
Joint Graduate School of Veterinary Sciences	Doctoral Program	Joint Major of Veterinary Sciences	Department	Basic Veterinary Science, Pathogenetic/Applied Veterinary Science, Clinical Veterinary Science			
United Graduate School of Agricultural Science	Doctoral Program	Department of Science of Biological Production	Major Chairs	Plant Production & Management, Animal Resource Production			
		Department of Science of Biological Environment		Agricultural & Environmental Engineering, Management of Biological Environment			
		Department of Science of Biological Resources		Utilization of Biological Resources, Smart Material Science, Regulation of Biological Functions			
International Joint Department of Food Science and Technology between Indian Institute of Technology Guwahati and Gifu University							
United Graduate School of Drug Discovery and Medical Information Sciences	Doctoral Program	Medicinal Sciences	Research Fields	Biological Molecular Sciences, System Biological Technologies			
			Endowed Course	Kotosugi Laboratory (KOTOSUGI Co.,Ltd.)			
			Joint Research Course	Department of Multi-stage polymerized fermentation (NIHON SHIZEN HAKKO CO. LTD.)			
		Medical Information Sciences	Research Fields	Biomedical Informatics, Biofunctional Control			