

September 20, 2022

To Gifu University students

YAMADA Toshihiro

Vice President (Academic Affairs and Student Support)

Director-General

Organization for Promotion of Higher Education and Student Support

Points of Attention in Daily Life and Class Operation Policies for Second Semester 2022

Gifu University has been implementing a wide-range of COVID-19 infection prevention measures since 2020 thanks to the support and cooperation from students and staff of the University. They include lockdowns of all facilities on campus at the beginning of 2020, introduction of remote-learning for students, workplace vaccine rollout campaigns, etc. In March and July, 2022, students and staff received the third booster shots on campus for the creation of academic environment free from infections.

Even after receiving vaccinations, we are still susceptible to infections, so please continue to wear masks if needed, use hand sanitizers and avoid the “Three Cs (closed spaces, crowded places and close-contact settings).

The following are “Points of Attention in Daily Life and Class Operation Policies for Second Semester 2022.” We would like to have your understanding and cooperation for our infection prevention measures on and off campus as shown below.

Class Operation Policies for Second Semester 2022

In line with “Gifu University Guideline for COVID-19,” and by taking every possible measure to prevent infections both on and off campus, Gifu University offers students in-person classes on campus. In addition, the university promotes “e-Learning (online, remote-learning)” to complement and maximize the effectiveness of class operations for students.

Please wear a face mask (un-woven fabric is preferable) when you attend in-person classes. Students are asked to take their temperatures at wake-up time every morning before attending in-person classes. If you have a fever or cold like symptoms, please contact the student affairs section of your faculty/school, etc., and stay home. You may be given some considerations for your credits if you take a leave of absence due to infections. Please contact the Health

Administration Center if you want to consult with medical staff.

If test results show that you tested positive or become a close contact, please scan QR code on the right or access <https://forms.office.com/r/0BbKRfMZA7> (“Gifu University Input form for people tested positive / became close contacts”) and enter necessary information to notify the Health Administration Center (you need to log in with your Gifu University account). You are also required to contact the student affairs section of your faculty/school, etc.



Points of Attention on and off Campus

<Commuting to and from Campus>

1. Please take your temperature when you get up in the morning, and if you have a fever or cold-like symptoms, contact the student affairs section of your faculty/school/center, etc. and stay home.
2. Please wear a face mask (un-woven fabric is preferable) on your way to and from campus. Please do not engage in conversations with others while on public transportation (trains or busses).
3. If you take a bus from the Gifu Station, please avoid taking crowded busses.

<On Campus>

1. Please wear a mask (un-woven fabric is preferable) while on campus. Please see attached “Mask requirements on campus” issued on June 7, 2022.
2. Please minimize time spent on campus.
3. Please wash your hands with soap and use a hand sanitizer on a regular basis (in particular, please do not forget to use a hand sanitizer or wash your hands after you used equipment, etc. for communal use and before meals).
4. Please take a seat away from others, and do not engage in conversations with others while eating.

<Other>

1. Please refrain from attending informal gatherings, eating and drinking sessions with your friends, classmates, etc. in the Three Cs settings and “5 Situations” that increase the risk of infection*
5 Situation*: <https://corona.go.jp/prevention/pdf/en.5situations.pdf>
2. Please keep a record of your seats in class, cafeteria and activities on campus using “Physical Condition Log Sheet (Attachment 1)” in case you should become an immediate contact of the infected. *You may use different means for your recording besides “Physical Condition Log Sheet.”

<In-Person Classes>

1. Please **refrain from chatting with others if topics are not related to class activities/work, etc.** from your entry through exit of a classroom.
2. Please **wear a face mask (un-woven fabric is preferable) in classroom.**
3. Please report/record your attendance and your seat in class for future outbreaks (such information is necessary to find immediate contacts in class).
4. Please take a seat which is **at least one-meter away from others.**
5. Please follow instructions from teaching staff in seating arrangement and ventilation in classroom.

<Operation of e-Learning Classes (under emergency situations)>

1. Depending on infection status and decisions made by individual faculties/schools, scheduled in-person classes could be replaced with online classes (partially or entirely). In such situations, online classes are conducted in line with course syllabus and if any changes are made in syllabus, students will be informed of the changes promptly.
2. In e-Learning classes, due considerations will be given to students over viewing / downloading educational materials (online video clips, etc.), and deadline for assignment submissions in view of different internet environment by students.
3. In online classes using video conferencing platforms such as “Teams” or “Zoom,” even if students are not able to attend classes due to communication troubles, etc. they are not immediately considered “absent from class” if they view recorded video footages at a later date.
4. In on-demand classes, instructions from your supervisors, Q&A sessions, etc. are offered to students promptly after class is over. They include 1. Right answers to the questions, corrections, replies to the questions raised by students, 2. Exchange opinions among students.
5. Your attendance at and understanding of online classes are confirmed through the assignments you submit to your supervisor (equivalent to students’ attendance in in-person classes).
6. Please consult with the academic staff or staff of student affairs office of your faculty / school / graduate school if you find it difficult to attend online classes or submit your assignments in digital form.

<Extracurricular Activities>

Updates on restrictions for extracurricular activities will be posted at Gifu University website.

June 7, 2022

To Gifu University students

YAMADA Toshihiro

Vice President (Academic Affairs and Student Support)

Director-General

Organization for Promotion of Higher Education and Student Support

Subject: Mask requirements on campus

Gifu Prefectural Government issued “Measures for living with COVID-19” on May 30, 2022 (<https://www.gic.or.jp/en/2022/06/measures-for-living-with-covid-19.html>) which include the prefecture’s mask-wearing guideline. In line with the guideline, Gifu University has laid down the following ground rule for mask-wearing, etc. for the members of Gifu University:

<Yanagido Campus>

- Please wear a mask anytime while indoors (regardless of distance with other people, engaging in conversations or not).
- Wearing a mask is not always necessary if you can secure more than 2 meters distance from other people outdoors.
- Wearing a mask is not always necessary if you do not engage in conversations even if you cannot secure more than 2 meter distance from other people outdoors.

<School of Medicine, University Hospital (including Nursing Course)>

- Please wear a mask indoors and outdoors regardless of distance with other people, engaging in conversations or not)

However, in a hot summer season, removing a mask is advised if the risk for heatstroke is rising whether you are on Yanagido Campus, School of Medicine or University Hospital. In addition, no need to wear a mask during classes for exercising both indoors and outdoors (including ground, pool and gymnasium), but please keep a distance from others and refrain from engaging in conversations unrelated to classes. We will announce the university’s policy on extracurricular activities at a later date.

For the users of public transportation system, please wear a mask whether you are on train, bus, etc. and during waiting time (regardless of distance from other people, engaging in conversations or not.)

Please remain on high alert if you are in the following “5 situations” that increase the risk of infection.

- | |
|--|
| <ul style="list-style-type: none">• Social gatherings with drinking alcohol• Long feasts in large groups• Conversation without a mask• Living together in a small limited space• Switching locations |
|--|

Please access:

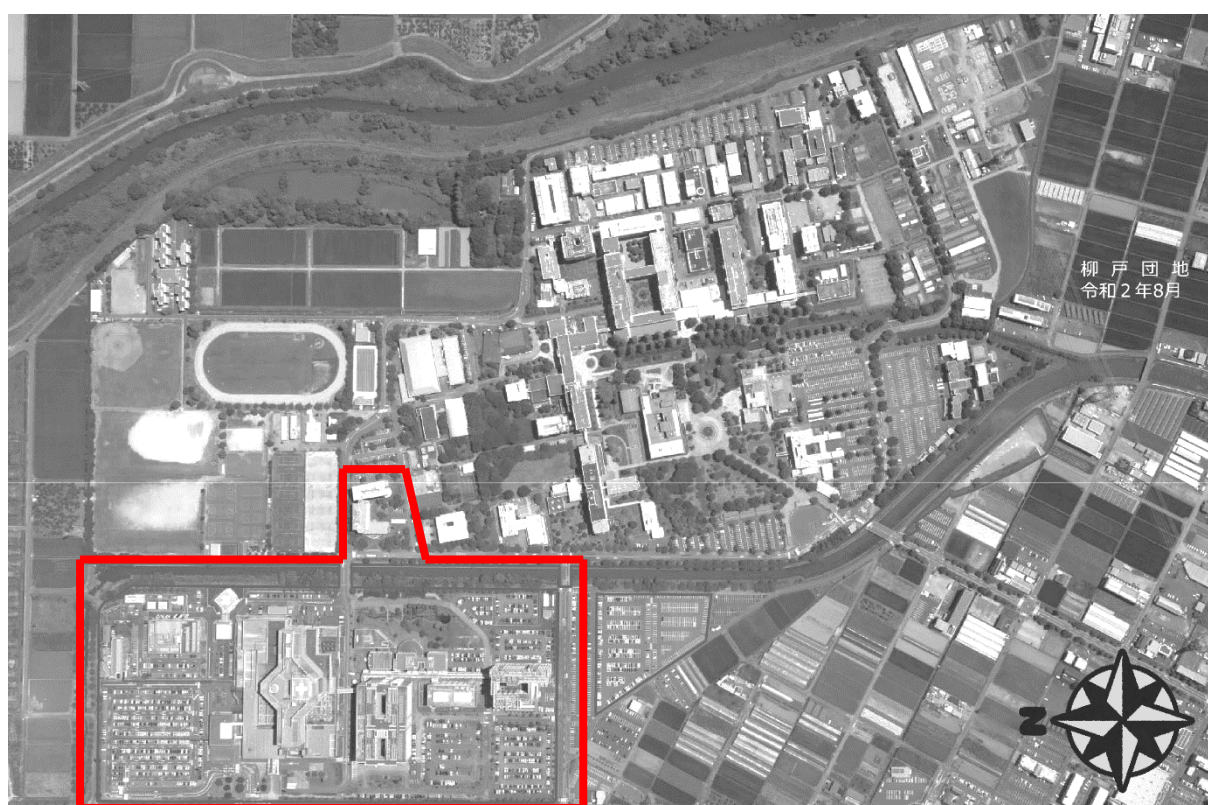
<https://corona.go.jp/prevention/pdf/en.5situations.pdf>

Basic Infection Prevention Measures

- Wear a mask (unwoven fabric, tightly fitted)
- Sanitize hands (frequent handwashing, disinfection)
- Avoid all “Three Cs” (closed spaces, crowded places and close-contact setting)
- Frequent ventilation (always-on air fan, more than two times per hour of ventilation by opening windows or doors)
- Monitor health (suspend all activities including work, business trip, commuting, extracurricular activity, travel, leisure, etc. if you feel unwell, and go to see a doctor)

If you feel unwell such as having a sore throat, running a high fever, etc. please contact the student affairs office of your faculty/school and Health Administration Center. After your informing, please go to see a doctor or take a rest at home. Infected individuals may be given special considerations for their absence from school, so please do not force yourself to come to campus or attend practical training off campus if you do not feel well.

Third booster vaccination is available for the University staff on Wednesday, June 29 and Friday, July 1, 2022. Those who are eligible to this third booster shot are the staff with third booster vaccine vouchers. With the reduced number of vaccination sites set by municipal governments, you will find this on-campus vaccination convenient and easy to access. We will let you know the details of this on-campus vaccination for third booster shot at a later date.



Areas of School of Medicine, University Hospital (including Nursing Course)

Physical Condition Log Sheet

Name

Student ID Number

[illegible]