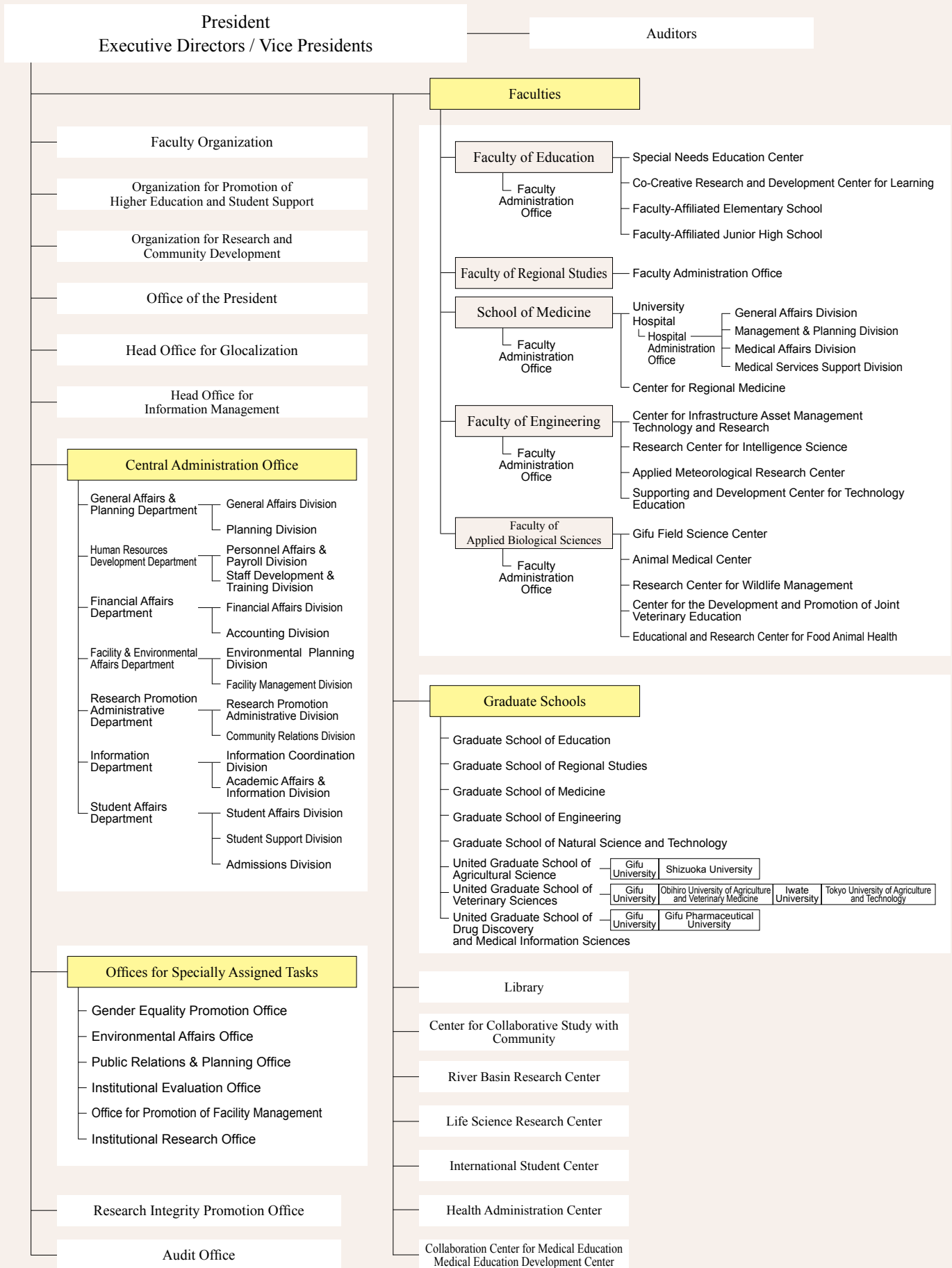


# Organization Chart



■ Faculty / School

<b>Education</b> (2 Training Courses, 12 Courses)	Training Course for School Teachers	Courses	National Language Education, Social Studies Education, Mathematics Education, Science Education, Music Education, Art Education, Health and Physical Education, Technology Education, Home Economics Education, English Education, School Education, Special Needs Education
	Training Course for Teachers at Special Needs School		
		Affiliated Institutions	Special Needs Education Center
			Co-Creative Research and Development Center for Learning
		Faculty-Affiliated Elementary School	
		Faculty-Affiliated Junior High School	
<b>Regional Studies</b> (2 Departments, 4 Domains)	Department of Policy Studies	Domains	Regional Policy, Environmental Studies
	Department of Cultural Studies		Cultural Studies, Regional Structure
<b>School of Medicine</b> (2 Courses)	Medical Course	Tutorial Courses	Human Anatomy, Histology & Embryology, Neuroanatomy and Neuroscience, Molecular Biology, Physiology, Microbiology, Pharmacology and Toxicology, Pathology, Community and Occupational Health, Cardiology/Respirology/Nephrology and Urology, Gastroenterology/Laboratory Medicine/Hematology, Endocrine and Metabolic System, Neuroscience and Behavioral Science, Child Health, Reproduction and Gynecology, Bioethics and Legal Medicine, Clinical Genetics and Ethics, Dermatology, Clinical Immunology, Eye, Ear, Nose and Throat, Musculoskeletal Science, Anesthesiology and Emergency Medicine, Diagnostic Imaging and Radiation Oncology
	Nursing Course	Courses	Basic Health Science and Fundamental Nursing, Maternal and Child Health Nursing, Adult and Gerontological Nursing, Community and Mental Health Nursing
		Affiliated Institutions	University Hospital
			Center for Regional Medicine
<b>Engineering</b> (4 Departments, 9 Courses)	Department of Civil Engineering	Courses	Environmental Studies, Disaster Reduction Studies
	Department of Mechanical Engineering		Mechanical Engineering, Intelligent Mechanical Engineering
	Department of Chemistry and Biomolecular Science		Materials Chemistry, Biomolecular Science
	Department of Electrical, Electronic and Computer Engineering		Electrical and Electronic, Informatics, Applied Physics
		Affiliated Institutions	Center for Infrastructure Asset Management Technology and Research
			Research Center for Intelligence Science
		Applied Meteorological Research Center	
		Supporting and Development Center for Technology Education	
<b>Applied Biological Sciences</b> (2 Courses, 1 Department)	Course of Applied Life Science	Sub-Courses	Molecular Life Science, Life Science for Food
	Course of Agricultural and Environmental Science		Plant Production, Animal Science, Environmental Science and Ecology
	Joint Department of Veterinary Medicine		
		Affiliated Institutions	Gifu Field Science Center
			Animal Medical Center
			Research Center for Wildlife Management <Endowed Research Division: Wild Animals Damage Prevention Division (Gifu Prefecture)>
	Center for the Development and Promotion of Joint Veterinary Education		
		Education and Research Center for Food Animal Health	



Faculty of Education



Faculty of Regional Studies



School of Medicine /  
University Hospital



Faculty of Engineering /  
Faculty of Applied Biological Sciences

■ Graduate School

<b>Education</b>	Professional Degree Program	Teacher Education Course	Courses	School Administrators Prepare Course, Education Practice Development				
	Master's Program	Supporting Psychological Development Course	Courses	Clinical Psychology, School Psychology, Special Needs Education				
Major in Subject-Integrated Education		Language and Social Studies, Science, Arts and Physical, Curriculum Development						
<b>Regional Studies</b>	Master's Program	Policy Studies	Areas	Socioeconomics, Public Administration and Policy, Environmental Studies				
		Cultural Studies		Society, Culture				
<b>Medicine</b>	Doctoral Program	Medical Sciences	Divisions	Molecule and Structure	Courses	Cell Signaling, Pharmacology, Parasitology and Infection, Gene and Development, Diabetes and Endocrinology, Pediatrics, Informative Clinical Medicine		
				Disease Control		Anatomy, Molecular Pathobiochemistry, Cardiology, Respiriology, General and Cardiothoracic Surgery, Orthopaedic Surgery, Dermatology, Urology, Anesthesiology and Pain Medicine, Oral and Maxillofacial Surgery		
				Neuroscience		Morphological Neuroscience, Physiology, Neurology and Geriatrics, Psychopathology, Neurosurgery, Otolaryngology, Ophthalmology and Visual Sciences, Clinical Brain Sciences		
				Tumor Control		Tumor Pathology, Pathology and Translational Research, Surgical Oncology, Gastroenterology, Hematology, Obstetrics and Gynecology, Radiology, Epidemiology and Preventive Medicine, Clinical Oncology		
	Medical Management	Biomedical Informatics, General Internal Medicine, Clinical Pharmacy, Health Economics, Emergency and Disaster Medicine, Legal Medicine, Occupational Health, Medical Education						
	Doctoral Program	Regeneration and Advanced Medical Sciences	Divisions	Molecular Regeneration	Courses	Tissue and Organ Development, Neurobiology, Microbiology		
				Regeneration Technology		Molecular Design and Synthesis, Intelligent Image Information		
				Applied Regeneration		Cardiovascular and Respiratory Regulation, Biomedical Ethics and Social Medicine		
	Master's Program	Nursing Science	Divisions	Nursing Education	Courses	Specialty Areas	Continuing Education in Nursing	Nursing Education, Biological Systems
				Nursing Practice			Maternal and Child Health Nursing	Maternal Nursing, Child Health Nursing
Nursing of Adults							Acute Care Nursing, Chronic Care Nursing	
Community Health Care Nursing							Community Health Nursing, Mental Health Nursing, Gerontological Nursing	
		Department of Integral Medicine	Cardiovascular and Respiriology Advanced Medicine (Gifu Welfare Federation of Agricultural Cooperatives), Frontier Science for Surgical Oncology (Yakult Honsha Co., Ltd.), Division for Regional Cancer Control (Gifu Welfare Federation of Agricultural Cooperatives), Regional Medicine and Musculoskeletal Science (Sekigahara Town), Advanced Joint Reconstructive Surgery (KYOCERA Medical Corporation, Biomet Japan, Inc.), Disability Medicine (Gifu Prefecture), Chronic Kidney Disease (Gifu Prefecture), Department of Advanced Image Development (JA Gifu, Koseikai Health System, Gifu Prefectural General Medical Center), Department of Perioperative Female Doctor Activity Support (JA Gifu), Department of Minimally Invasive Cancer Therapy (JA Gifu, Ono Pharmaceutical Co., Ltd., Chugai Pharmaceutical Co., Ltd.)					
<b>Engineering</b>	Doctoral Program	Mechanical and Civil Engineering	Courses	Civil Engineering, Mechanical Engineering				
		Material Engineering		Applied Materials Chemistry, Applied Molecular Chemistry				
		Electronics and Information Systems Engineering		Electronic Materials Engineering, Knowledge and Information Engineering				
		Environmental and Renewable Energy Systems		Environmental Systems, Renewable Energy Systems, Fundamental Science on Environment, New Functional Materials for Renewable Energy				
<b>Natural Science and Technology</b>	Master's Program	Department of Life Science and Chemistry	Courses	Medical Chemistry and Biotechnology, Applied Chemistry and Biotechnology, Molecular Life Science, Life Science for Food				
		Department of Agricultural and Environmental Science		Plant Production, Animal Science, Environmental Science and Ecology				
		Department of Civil and Environmental Engineering		Environment Studies, Disaster Reduction Studies				
		Department of Materials Science and Procession		Materials Chemistry, Materials Processing				
		Department of Intelligence Science and Engineering		Intelligent Mechanical Engineering, Informatics, Applied Mathematics and Physics				
		Department of Energy Engineering		Energy Conversion, Electrical and Energy System Engineering				
<b>United Graduate School of Agricultural Science</b>	Doctoral Program	Science of Biological Production	Major Chairs	Plant Production & Management, Animal Resource Production				
		Science of Biological Environment		Agricultural & Environmental Engineering, Management of Biological Environment				
		Science of Biological Resources		Utilization of Biological Resources, Smart Material Science, Regulation of Biological Functions				
<b>United Graduate School of Veterinary Sciences</b>	Doctoral Program	Veterinary Sciences	Major Tracks	Basic Veterinary Science, Pathogenetic Veterinary Science, Applied Veterinary Science, Clinical Veterinary Science				
<b>United Graduate School of Drug Discovery and Medical Information Sciences</b>	Doctoral Program	Medicinal Sciences	Research Fields	Biological Molecular Sciences, System Biological Technologies				
		Medical Information Sciences		Biomedical Informatics, Biofunctional Control				