

Tokai National Higher Education and Research System

GIFU UNIVERSITY

2023



President's Message

In April 2022, national universities across Japan launched a six-year “Fourth Mid-Term Objectives and Plan,” formulated by the Ministry of Education, Culture, Sports, Science and Technology (MEXT) of Japan. While endeavoring to achieve these government objectives, Gifu University demonstrated tangible growth and achievements at this important juncture of the fourth year, since the formation of a new academic entity called the “Tokai National Higher Education and Research System (THERS)” by Gifu University and Nagoya University after both institutions merged in April 2020.

While sharing THERS’ mission of “make new standards for the public,” and upholding Gifu University’s own long-term ideals of “learning, exploring and contributing,” we advocate the following as the core motives of our new visions and strategies for the future: “strategic promotion of community co-creation,” “execution of unique, original research projects,” “sparking innovation,” “provision of quality education,” and “serving as a hub for community revitalization to address various issues of humanity.”

Furthermore, in our efforts to embody our new mission of “Migration, Laboratory, Innovation, Education,” Gifu University is pushing forth the five objectives of “creation of businesses and community-building,” “product manufacturing,” “food manufacturing,” “development of new medical systems,” and “human resource developments.” While working towards community co-creation with our stakeholders, we believe that our strategic education promotion schemes, pioneering research projects, and innovations will make it possible to expand our boundaries and bolster our community contributions.

Over the past three years, the world has been significantly affected by the coronavirus disease (COVID-19) and Russia’s invasion of Ukraine. Consequently, people worldwide continue to face severe hardships such as soaring material and energy prices. These challenges have also placed considerable strain on university resources. However, we have continued our efforts to ensure steady progress despite these hardships and difficulties.

Now, let me explain some major developments of THERS’ core educational and research directives.

First, is the Institute for Glyco-core Research (IGCORE) whose major objective is to create an open research environment for scholars and researchers, transcending disciplinary and institutional boundaries. We expect dynamic progress from the “Human Glycome Project” which was launched by iGCORE as a large-scale national project to create a new horizon in the life sciences.

Second, the Aerospace Research and Education Hub (AREH) was established with the primary mission of advancing aerospace technology and human resource development. Today, as one of THERS’ directives, AREH is embarking on “cyber physical factory” projects to assist a wide range of manufacturing businesses in the community after gaining support from Gifu Prefecture and the Cabinet Office.

Third, we plan to build one of the most progressive bases for the life sciences in Japan to advance new medicine and drug discovery. All relevant faculties at Gifu University, including medicine, veterinary and pharmaceutical sciences, and drug discovery, are important stakeholders in building this base for life sciences, which will be bolstered by the Faculty of Applied Biological Sciences and the Faculty of Engineering in combining the fields of life sciences, food sciences, agriculture, and bioengineering. In January 2023, the Center for One Medicine Innovative Translational Research (COMIT) commenced operations to discover and develop new medical treatments. We are ready to expand our collaboration to include other research institutions, where scholars and researchers can freely interact to pursue new medical and therapeutic interventions or treatments for humans and animals. COMIT has demonstrated a leadership role in creating a comprehensive region-based clinical research platform and implementing THERS’ drug discovery and cutting-edge medical research strategy initiatives.

We have also made consistent efforts to promote carbon neutrality and environmental protection to achieve SDGs¹⁾. We hope that substantial progress in science, technology, and dynamic innovations will enable us to address a wide range of socioeconomic issues, such as climate change, and work toward robust economic growth in the future.

The new educational programs introduced by Academic Central, one of the “core educational and research directives” of THERS, include joint classes for students of both Gifu and Nagoya universities under Gifu University’s campus-wide core curriculum and classes that focus on English, mathematical and data science, and artificial intelligence (AI). Our credit transfer system and shared use of laboratories and

facilities by students from both universities have significantly expanded. Additionally, joint support for PhD students has accelerated. We look forward to the actualization of the “Digital University Initiative²⁾,” which will expedite campus digital transformation by offering an enhanced educational environment for students and researchers in future.

Gifu University was selected by MEXT to develop the “Gifu Region Human Resource Development Program: to establish academic infrastructure for regional revitalization³⁾” under the “Human Resource Development for Regional Revitalization: Supereminent Program for Activating Regional Collaboration (SPARC) 2022.” Under the framework of this program, Gifu University is forging strong ties with Gifu City Women’s College, Chubu Gakuin University and College, and other national, public, and private universities. Specifically, we are involved in the joint creation of new educational curricula, facilitation of business entrepreneurship, and community-building.

At Gifu University, a significant number of international students and researchers are studying and engaging in research activities on campus. As a regional academic hub for the community, Gifu University aims to enhance its global competence by building strong international alliances, promoting active exchange, and fostering active players with a global mindset who can work for the community. To date, Gifu University has 49 foreign partner universities and 59 faculty-level partnerships across countries in Europe, North America, Asia, and Oceania. Some faculties offer strong support to students who wish to study abroad in the near future. In addition, joint degree programs (four international master’s and PhD programs) with the Indian Institute of Technology Guwahati and the National University of Malaysia were launched in April 2019 to accelerate the internationalization and enhancement of educational and research capabilities among the three universities. We hope that new joint degree programs will be launched with other universities in Southeast Asian countries with the support of industry-academia partnerships.

Gifu University remains committed to reinforcing collaboration with local governments, providing consistent support for business ventures born out of Gifu University, and accelerating community co-creation with local governments.

Let me conclude my message by stating my strong hopes that all members of Gifu University strive to make the University and our community a place for people to pursue and materialize their dreams, and to this end, we will continue to transform ourselves for consistent growth and becoming a sustainable academic center for the community in the days to come.

1) Sustainable Development Goals (SDGs): a collection of 17 global goals designed to be a “shared blueprint for peace and prosperity for people and the planet, now and into the future,” established in 2015 by the United Nations General Assembly (UN-GA) and are intended to be achieved by 2030.
2),3) tentative English name

YOSHIDA Kazuhiro
President, Gifu University





Contents

President's Message	01
Ideals and Aims	02
Charter	03
Three Policies for Education	04
Approach on Environment	05
Organization Chart	06
Academic Organization	07

Education "Learn" as a keyword	
Organization for Promotion of Higher Education and Student Support	14
Number of Students	16
Applicants and Admissions	18
Number of Graduates (Undergraduate)/ Career Paths	19
Medical Licensing Examination Pass Rate/ Teacher Employment Rate	20
Number of Graduates (Graduate School)/ Career Paths	21
Student Support Facility	23
Student Club Activity	24

Research "Explore" as a keyword	
Academic Research and Industry-Academia-Government Collaboration	25
Research Initiatives	26
Grants-in-Aid for Scientific Research	28
Joint Research/Commissioned Research	29
Number of Inventions for Patent	29

For Society "Contribute" as a keyword	
University-Community Collaboration	30
Extension Course/Symposium/Forum	31
City College Program	31
Senior High School-University Collaboration	31

International Relations	
Organization for Promotion of Globalization	32
Statistical Data on Inbound and Outbound	33
International Academic Exchange	35
Researchers Inbound / Outbound	37
International House	37
Overseas Office	37

Organization	
Board Members	38
Number of Board Members, Teaching and General Staff	40
Budget	41
Endowment	41
History	42
Presidents Past and Present	43

Campus	
Campus Map	44
Area of Campus and Affiliated Facility	46
Location/Access	48

Learning, Exploring, and Contributing

University Emblem



Designed by Dr. Hanichi Sakai, Professor Emeritus of Gifu University

-Gifu University's emblem signifies a boat traditionally used for cormorant fishing and the fire kindled on it to attract fish. The fire represents learning, while the boat represents human happiness.

-The light and dark splashes the Earth and the natural world. They represent all existence and activity, harmony and balance.

-The combination of black and orange signifies passion. It also represents rich and dignified sensibilities.

-The simplified shape signifies the cleanliness and dynamic character of contemporary life. It also represents the speed and intellectual tenor of our times.

University Symbol



Designed by Mr. Hiromi Miyagawa

In 2009, to mark the 60th anniversary of the University's founding, the University solicited design proposals nationwide and chose this symbol from among the proposals. The design embodies our hope that the rich educational and research activities being carried out in Gifu will be known throughout Japan and to the world, and that the students of Gifu University will advance on a sure path-like an arrow-toward their respective futures. The emblem incorporates a powerful bow, forming the letter G for "Gifu."

Ideals

Blessed with abundant nature and referred to as the land of seiryu (clear water), for historical and geographical reasons, the Gifu region has developed and passed down a diverse culture and technology that brought eastern and western cultures together. Having inherited these attributes, Gifu University, a constituent member of Tokai National Higher Education and Research System (THERS) trains students, who will later actively participate in society. We provide a place where students learn, explore, and contribute in an environment conducive to exploration and growth. Applying the distinguishing feature of having all undergraduate and graduate programs located on a single campus for educational and research activities, Gifu University provides education focused on training highly skilled professionals by fully utilizing a strong partnership with our THERS partner, Nagoya University. We are committed to conducting high quality research that is the foundation of such education and to achieving internationalization rooted in the local community. The University strives to become a core hub for reinvigorating local communities through efforts such as providing local communities with the benefits derived from the above activities.

Aims

1. Education

Gifu University cultivates highly skilled professionals who have deep, extensive knowledge, strong motivations for autonomous learning, high moral standards, and the skills to explore and tackle social issues to build the better future. To fulfill this mission, Gifu University provides students with quality education, the best combination between in-person and remote learning, and visualizes achievements of individual students to motivate their continued academic improvement.

2. Research

Gifu University aims to increase the number of citations of papers authored by our researchers full of intellectual curiosities to enhance our academic competence in the world. The University also aims to form a group of research hubs where the world's best research results are produced, paving the way for finding solutions to a wide range of current socio-economic issues.

3. Internationalization

Gifu University carries out diverse educational activities with the Joint Degree Programs as a driving force for glocalization (glocal: global + local), namely "internationalization rooted in local communities." The University also makes the best of THERS' global human network reinforced by information and communication technology (ICT).

4. Social Contribution

Gifu University deepens and strengthens cooperation among different universities, university-affiliated organizations, local businesses, and so on in the central Tokai region to resolve various regional issues. The University also promotes the region's distinctive features and attractions by providing quality education and contributing to better public services for citizens. In addition, the University accelerates educational and research activities conducive to enhancing local businesses' competitive edge, generation of entrepreneurs and business ventures, formation of industry-academia collaboration center, and creation of new sets of values through effective application of technological innovations for the development of society.

5. Regional Medicine

Gifu University Hospital plays a pivotal role in supporting regional medicine, and contributes to the well-being of citizens as the sole university-affiliated hospital in Gifu Prefecture. The Hospital provides citizens the most advanced medical treatments, creates comprehensive medical information platforms, fosters global-minded medical professionals, and spearheads the advancement of regional medicine to meet the needs of society.

Charter of Student : What Gifu University expects of its students

The few years that the students spend at Gifu University will surely be some of the most brilliant years of your life, and therefore arguably the most important. Your student life at Gifu University will play a decisive role in your future, however, you choose to live it. As you build a foundation for scholarly pursuits and acquire advanced and specialized knowledge, we ask that you also strive to develop your capacity for perception and sensitivity towards humanity, nature, and society. The University faculty will do its utmost to meet your expectations, and we ask that you, in turn, put forth your greatest efforts.

- Read books, and strive to build a solid foundation for learning.
- Develop an appreciation for the arts, and aspire to deepen your understanding of humanity and nature.
- Endeavor to acquire the advanced and specialized knowledge needed to be a professional.
- Assemble your thoughts into clear and logical pieces of writing, so that you can present your ideas effectively.
- Enhance proficiency in English, and develop the skills needed for mutual understanding in today's global environment.
- Use information and communication technology prudently, and develop your ability to locate and discern factual information and convey information accurately to others.
- Form healthy living habits, and develop physical stamina and vigor for a long and healthy life.

Charter of Faculty : What Gifu University asks of its faculty

Gifu University makes efforts to embody the ideals of research and education. In accordance with the Charter of Student, the greatest mission with which the University is charged is the cultivation of outstanding talent that will meet the needs of society. We believe that supporting first-rate research and a passion for learning are essential components of high-quality education. To this end, the faculty, as both researchers and educators, must remain conscious at all times of the University's high standard of ethics, while pursuing original research on par with the world's best.

- As faculty members of a center of education and research, teach in a manner that supports the Charter of Student.
- Cultivate competent personnel who possess a depth and breadth of views and the comprehensive skills needed for sound evaluation and judgment.
- As both researchers and educators, let your actions reflect a constant awareness of ethics.
- Hold lofty goals, and aim to conduct research on par with the world's best.
- Pursue original research with a broad perspective and view for the long-term.
- Seek to contribute to society in your field of study.

Charter of Philanthropy : How Gifu University responds to the expectations and needs of society

The image invoked by the word 'university' has traditionally been one of a lofty presence far removed from society, a so-called 'ivory tower.' However, since the move to incorporate national universities in Japan, they have become corporate entities upon which today's society places vast expectations. Universities have responded to these expectations by actively serving and giving back to society. As a regional university situated in the center of Japan, Gifu University is expected to respond to the broad expectations and demands of the regional community in areas of education, research, industry, medicine, culture and others, and contribute to the international community as well.

- Cultivate excellent human resources, as this is the greatest social contribution expected of the University.
- Cooperate and collaborate with the regional community, as this is one of the most important obligations of a regional university.
- Help breathe new life into regional industry through cooperation with industry and government.
- Contribute to the progress of regional education, culture, economy, and public administration through cooperation with the region's citizens and administrative authorities.
- The University Hospital is also expected to carry out its roles as a center of advanced medical treatment and of development of local medical care.
- Work with developing and developed nations for the resolution of international and social issues.
- Contribute to the international community through student exchange programs and other collaborations with overseas educational institutions.

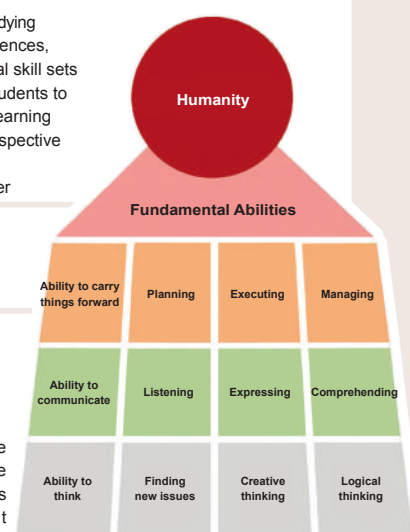
Charter of Administration : What Gifu University requires of its administration

Society has high expectations for the University regarding education, research, and social contributions. In this regard, it is imperative that the University responds to these expectations by setting and achieving the Mid-Term Objectives, and making and implementing the Mid-Term Plan. The University aims to advance its original goals and to see that the University itself progresses as an organization with a unique structure and system of values. To do so, it is crucial that the staff and faculty share a common awareness of the issues concerned and engage in the administrative affairs of the University under the leadership of the President of the University. Given that necessity, it is essential that we focus on strategy and work to build a distinctive university. Given the unforgiving economic conditions that all national universities face, administration and management require the element of strategy in their operations if they hope to maintain the activities of the University and advance the education, research, and social contributions that are its essential responsibilities.

- Achieve the Mid-Term Objectives and execute the Mid-Term Plan.
- Emphasize the importance of strategizing, and carry out administration with clear objectives under the leadership of the University President.
- Conduct operations with a high priority placed on environmental issues. Concerns for these issues should be reflected in the University education, research, and social contributions.
- Operate under a clear management strategy in order to overcome harsh economic conditions.
- Be diligent in the acquisition of external funding and strengthen the University's economic base.
- Emphasize transparency and the public accessibility of information, and conduct management in a manner that is both efficient and logical.
- Hire first-rate people for the faculty and cultivate their talents.
- Use the University assets such as student educational data and educational research data of faculty for the promotion of quality education and research work.

■ Three Policies for Education (for Undergraduate)

Diploma Policy	<p>Blessed with the unique feature of having all faculties clustered within one campus, Gifu University promotes education focusing on nurturing highly-skilled professionals, outstanding research for high level education, and internationalization rooted in the local community. Under the motto of "Learning, Exploring and Contributing," the university awards bachelor's degrees to those who have comprehensively acquired the underlying principles and specialized skills in their respective fields of expertise.</p> <ul style="list-style-type: none"> • Fundamental abilities that cultivate humanity: <ul style="list-style-type: none"> - Ability to think (comprehensive judgment) - Ability to communicate (communication skills) - Ability to carry things forward (action-taking skills) • A high degree of specialization required of professionals: <ul style="list-style-type: none"> - Sophisticated expertise and skills that are required to further the development of society - Ways of thinking and viewpoints based on extensive knowledge and insight - A sense of social responsibility based on a broad liberal arts education and a high standard of ethics
Curriculum Policy	<p>Gifu University organizes and implements its systematic education curriculum with clear goals, and carries out constant reforms based on the following curriculum policy so that it may produce professionals equipped with fundamental abilities as well as specialized skills.</p> <ul style="list-style-type: none"> • Develop fundamental abilities that cultivate humanity • Properly appraise own academic achievements and cultivate a mindset of autonomous studying • Implement liberal arts education ranging from humanities, social sciences, natural sciences, Gifu studies, sports, health sciences, English / foreign languages and culture, practical skill sets for working adults, mathematics and data science, and artificial intelligence (AI) for students to assess their own academic achievements and to study proactively towards life-long learning • Train students to have professional viewpoints and ways of thinking reflecting their respective fields of expertise • Cultivate ethical standards that enable students to act in a socially responsible manner
Admission Policy	<p>With the campus situated in a natural lush green environment, Gifu University seeks to foster individuals who are able to "learn, explore and contribute" in a wide range of academic pursuits. Gifu University seeks to admit students who possess the following qualities, on top of basic knowledge and expertise:</p> <ul style="list-style-type: none"> • Those who have intellectual curiosity and are self-motivated to learn and study • Those who see things from multiple perspectives and capable of logical thinking • Those who listen to opinions of others and express their ideas • Those who are motivated to actively inquire about the issues before them • Those who will play active roles locally and globally <p>To select students who are equipped with the aforementioned qualities, and in line with own diploma and curriculum policies, the respective faculties conduct an entrance examination from multiple and comprehensive perspectives to evaluate students through their academic achievement and essay tests. Please refer to the student recruitment guidelines of each faculty.</p>



■ Three Policies for Education (for Graduate)

Diploma Policy	<p>Blessed with the unique feature of having all faculties clustered within one campus, Gifu University Graduate School promotes education focusing on nurturing highly-skilled professionals, outstanding research for high level education, and internationalization rooted in the local community. Under the motto of "Learning, Exploring and Contributing," the university awards degrees to those who have comprehensively acquired the underlying principles and specialized skills in their respective fields of expertise.</p> <ul style="list-style-type: none"> • Fundamental abilities as highly-skilled professionals: <ul style="list-style-type: none"> - Ability to think (comprehensive judgment) - Ability to communicate (communication skills) - Ability to carry things forward (action-taking skills) • Advanced specialized knowledge and technical skills: <ul style="list-style-type: none"> - More sophisticated expertise and skills that are required to further the development of society - Ways of thinking and viewpoints based on more extensive knowledge and insight - A sense of social responsibility based on a broader liberal arts education and a higher standard of ethics
Curriculum Policy	<p>Gifu University Graduate School organizes and implements its systematic education curriculum with clear goals, and carries out constant reforms based on the following curriculum policy so that it may produce professionals equipped with fundamental abilities as well as specialized skills</p> <ul style="list-style-type: none"> • Cultivate sophisticated expertise and skills that are required to further the development of society • Develop ways of thinking and viewpoints based on extensive knowledge and insight • Cultivate a sense of social responsibility based on a broad liberal arts education and a high standard of ethics
Admission Policy	<p>With the campus situated in a natural lush green environment, Gifu University Graduate School seeks to foster individuals who are able to "learn, explore and contribute" in a wide range of academic pursuits. Gifu University Graduate School seeks to admit students who possess the following qualities, on top of basic knowledge and expertise:</p> <ul style="list-style-type: none"> • Those who have intellectual curiosity and are self-motivated to conduct research • Those who can contemplate things comprehensively and logically • Those who have a broad range of knowledge and high standard of ethics, and who acknowledge social responsibility in their research • Those who will play active roles locally and globally <p>To select students who are equipped with the aforementioned qualities, and in line with own diploma and curriculum policies, the respective graduate schools conduct an entrance examination from multiple and comprehensive perspectives to evaluate students through their academic achievement and essay tests. Please refer to the student recruitment guidelines of each faculty.</p>

On November 27, 2009, Gifu University declared itself an “environmental university,” indicating that it would contribute to the regional community by pursuing ongoing, unique programs of environmental initiatives based on the Gifu University Environmental Policy.

[Gifu University Environmental Policy]

Gifu University continues and expands activities for “environmental university” while aiming for achieving its ideals and aims. The University also makes campus friendly to the environment and develops human resources who will initiate environmental conservation for the future.

[Basic Policies]

1. Pursue environmental education and research in a way that takes advantage of the University's unique characteristics.
2. Be aware of the environmental aspect of educational and research activities at all times, evaluate the environmental impact of the University's activities, and strive to prevent environmental pollution.
3. Work to significantly lower the environmental impact of the University's activities by saving energy and resources.
4. Thoroughly comply with environmental laws and regulations applicable to education and research as well as with other provisions and requirements to which the University has acceded.
5. Establish and work to continuously improve a framework for reviewing the University's environmental management system.
6. Mitigate the problems of climate change, adaptation, and protect biodiversity through education and research.
7. Establish and work to achieve activity targets and objectives for each academic year.

Gifu University publicizes this Environmental Policy both on and off campus.

Gifu University has earned university-wide ISO 14001 certification (excluding the University Hospital)

After the Faculty of Regional Studies earned certification under ISO 14001, a global environmental management system standard, in 2003, the scope of certification was successively expanded, and the entire university had earned it by 2013, with the exception of the University Hospital.

The university earned certification under ISO14001:2015, the new standard of ISO14001 in 2016 and its environmental management is monitored by this new standard.



Gifu University publishes an Environment White Paper.

Gifu University publishes an Environment White Paper in September every year to make Gifu University's efforts for environment conservation public.



Lab interview by student editors



Gifu University Environment Month (every November)

Gifu University has designated November as Environment Month, a time during which a variety of environment-related events are carried out, based on the date of its Environmental University declaration (November 27, 2009).



Campus cleanup by students and faculty members



Eco-friendly poster awarding



ISO14001 internal environmental audit by students



Completion Certificate Ceremony for "ISO14001 Internal Environmental Auditor Training Course"

Organization Chart

Tokai National Higher Education and Research System

Gifu University

Nagoya University

President

Vice President

■ Academic and Administrative Organization

Faculties and Schools

Faculty of Education

Gifu University Faculty of Education Affiliated
Compulsory School System (Elementary - Junior High)
Special Needs Education Center
Co-Creative Research and Development Center for Learning
Administration Office of Faculty of Education

Faculty of Regional Studies

Administration Office of Faculty of Regional Studies

School of Medicine

University Hospital
Medical Education Development Center
(Collaboration Center for Medical Education)
Center for Regional Medicine
Administration Office of Graduate School of
Medicine and School of Medicine

Faculty of Engineering

Center for Infrastructure Asset Management Technology and Research
Applied Meteorological Research Center
Center for Applied Research of Plasma
Center for Space Research and Utilization Promotion
Supporting and Development Center for Technology Education
Administration Office of Faculty of Engineering

Faculty of Applied Biological Sciences

Gifu Field Science Center
Animal Medical Center
Research Center for Wildlife Management
Center for the Development and Promotion of Joint Veterinary Education
Educational and Research Center for Food Animal Health
Administration Office of Faculty of Applied
Biological Sciences

School of Social System Management

Graduate Schools

Graduate School of Education

Psychological Clinic

Graduate School of Regional Studies

Graduate School of Medicine

Graduate School of Engineering

Graduate School of Natural Science and Technology

Joint Graduate School of Veterinary Sciences

Gifu University Tottori University
Center for the Development and
Promotion of Joint Veterinary
Education

United Graduate School of Agricultural Science

Gifu University Shizuoka University

United Graduate School of Drug Discovery and Medical Information Sciences

Gifu University Gifu Pharmaceutical University

Institute for Advanced Study

River Basin Research Center

Institute for Glyco-core Research (iGCORE)

Health Administration Center

Center for Collaborative Study with Community

■ Administration Support Organization

Library

Gender Equality Promotion Office

Organization for Promotion of Higher Education and Student Support

Environmental Affairs Office

Academic Research and Industry-Academia-Government Collaboration

Disaster Management Office

Organization for Promotion of Glocalization

Public Relations & Planning Office

Information & Communications

Institutional Evaluation Office

Office for Promotion of Facilities Management

Research Integrity Promotion Office

Institutional Research Office

Development Office

■ Administration Organization

Administration Services Tokai National Higher Education and Research System

Executive Director of Administration

General Affairs Department
General Affairs Division
Public Relations Division
Personnel Division
Personnel Affairs & Labor Division
Management Planning Department
Management Planning Division
Financial Affairs Division
Account Settlement Division
Funding Control Division
Accounting Division 1
Accounting Division 2
Education Policy Department
Education Policy Division
Education Management
Research Strategy Department
Research Planning Division
Research Organization Administration Division
Research Safety Control Division
Industry-Academia-Government Collaboration Division
Research Funding Division
Facilities Department
Facilities Planning Division
Assets Division
Construction Division
Equipment Division
Environment & Safety Division
Information and Communications Technology Services Department
Information Planning Division
Information System Operations Division
Library Information Department
Information Control Division

Gifu University Hospital Administration Office
Nagoya University Hospital Administration Department
General Affairs Division
Management Division
Facilities Control Group
Medical Affairs Division
Medical Support Division

Gifu University Administration Services

Director of Administration

Research Promotion Administrative Department
Research Promotion Division
Research Support Division
Student Affairs Department
Student Affairs Division
Academic Planning Division
University-Wide Interfaculty Education Division
Student Support Division
Admission Division
International Engagement Division
Academic Affairs and Information Division
Administration Department for Faculties and Graduate Schools

■ Faculty / School

Education (1 Training Course, 12 Courses)	Training Course for School Teachers	Courses	National Language Education, Social Studies Education, Mathematics Education, Science Education, Music Education, Art Education, Health and Physical Education, Technology Education, Home Economics Education, English Education, School Education, Special Needs Education.
		Affiliated Institutions	Special Needs Education Center
			Co-Creative Research and Development Center for Learning
			Gifu University Faculty of Education Affiliated Compulsory School System (Elementary-Junior High)
Regional Studies (2 Departments, 4 Domains)	Department of Policy Studies	Domains	Regional Policy, Environmental Studies
	Department of Cultural Studies		Cultural Studies, Regional Structure
School of Medicine (2 Courses)	Medical Course	Tutorial Courses	Physiology, Biochemistry, Human Body, Neuroanatomy & Neuroscience, Microbiology, Pharmacology & Toxicology, Pathology, Cardiology & Respirology & Nephrology & Urology, Gastroenterology & Hematology & Laboratory Medicine, Endocrine & Metabolic System, Neurology, Child Health & Reproduction & Gynecology, Bioethics & Legal Medicine, Clinical Genetics & Ethics, Dermatology, Clinical Immunology, Eye & Ear & Nose & Throat, Locomotor System, Anesthesiology & Emergency Medicine, Diagnostic Imaging & Radiation Oncology, Psychiatry, Community & Occupational Health
	Nursing Course	Courses	Integrated Basic Sciences, Regional Lifelong Development Nursing, Community Health Support Nursing
		Affiliated Institutions	University Hospital
			Medical Education Development Center (Collaboration Center for Medical Education)
			Center for Regional Medicine
Engineering (4 Departments, 9 Courses)	Department of Civil Engineering	Courses	Environmental Studies, Disaster Reduction Studies
	Department of Mechanical Engineering		Mechanical Engineering, Intelligent Mechanical Engineering
	Department of Chemistry and Biomolecular Science		Materials Chemistry, Biomolecular Science
	Department of Electrical, Electronic and Computer Engineering		Electrical and Electronic, Informatics, Applied Physics
		Affiliated Institutions	Center for Infrastructure Asset Management Technology and Research
			Applied Meteorological Research Center
			Center for Applied Research of Plasma
			Center for Space Research and Utilization Promotion
Applied Biological Sciences (2 Courses, 1 Department)	Course of Applied Life Science	Sub-Courses	Molecular Life Science, Life Science for Food
	Course of Agricultural and Environmental Science		Plant Production, Animal Science, Environmental Science and Ecology
	Joint Department of Veterinary Medicine		
		Affiliated Institutions	Gifu Field Science Center
			Animal Medical Center
			Research Center for Wildlife Management
			Center for the Development and Promotion of Joint Veterinary Education
		Education and Research Center for Food Animal Health	
School of Social System Management			



Faculty of Education



Faculty of Regional Studies



School of Medicine /
University Hospital



Faculty of Engineering /
Faculty of Applied Biological Sciences



School of Social System Management

■ Graduate School

Education	Professional Degree Program	Teacher Education Course	Courses	School Administrators Prepare Course, Education Practice Development, Teaching Ability Development Course				
	Master's Program	Course of Clinical Psychology for Education						
Regional Studies	Master's Program	Policy Studies	Areas	Socioeconomics, Public Administration and Policy, Environmental Studies				
		Cultural Studies		Society, Culture				
Medicine	Doctoral Program	Medical Sciences	Divisions	Biological Principles	Courses	Anatomy, Physiology, Molecular Pathobiochemistry, Neurobiology, Pharmacology, Stem Cell and Regenerative Medicine		
				Functional Biology		Morphological Neuroscience, Cell Signaling, Pathology and Translational Research, Legal Medicine, Laboratory of Molecular Design and Synthesis		
				Biomedical Networks		Parasitology and Infectious Diseases, Microbiology, Tumor Pathology, Epidemiology and Preventive Medicine, Biomedical Ethics and Social Medicine, Occupational Health, Medical Education, Health Economics, Systems Biology		
				Internal Medicine		Gastroenterology, Clinical Oncology, Cardiology, Respiriology, Hematology-Infectious Disease, Diabetes, Endocrinology and Metabolism, Rheumatology and Clinical Immunology, Nephrology, General Medicine and General Internal Medicine		
				Surgery		Cardiovascular Surgery, General Thoracic Surgery, Gastroenterological Surgery-Pediatric Surgery, Breast Surgery		
				Neuroscience		Neurology, Neurosurgery, Clinical Brain Sciences, Psychiatry		
				Sensorimotor Medicine		Orthopaedic Surgery, Rehabilitation, Dermatology, Plastic and Reconstructive Surgery, Ophthalmology, Otolaryngology-Head and Neck Surgery, Oral and Maxillofacial Surgery		
				Biomedical Medicine		Anesthesiology and Pain Medicine, Urology, Emergency and Disaster Medicine, Radiology, Laboratory Medicine, Clinical Pharmacy, Diagnostic Pathology		
	Reproductive and Developmental Medicine	Pediatrics, Obstetrics and Gynecology						
	Master's Program	Nursing Science	Divisions	Nursing Education	Courses	Specialty Areas	Nursing Education	
				Integrated Basic Sciences			Functional Bioscience, General Science and Arts	
				Regional Lifelong Development Nursing			Maternal Nursing, Child Health Nursing, Acute Care Nursing, Chronic Care Nursing, Gerontological Nursing	
				Community Health Support Nursing			Community Health Nursing, Mental Health Nursing	
	Master's Program	Health Professions Education	Divisions	Health Professions Training and Development, Health Professions Program Development, Biomedical Ethics and Social Medicine Education, General Internal Medicine, Regional Medicine Education, Physician Clinical Training				
			Department of Integral Medicine	Department of Cardio-Renal and Respiratory Advanced Medicine (Gifu Welfare Federation of Agricultural Cooperatives), Division for Regional Cancer Control (Gifu Welfare Federation of Agricultural Cooperatives), Frontier Science for Regional Medicine and Musculoskeletal Science (Sekigahara Town), Advanced Joint Reconstructive Surgery (KYOCERA Medical Corporation, Biomet Japan, Inc., Smith & Nephew plc), Department of Advanced Image Development (Gifu Welfare Federation of Agricultural Cooperatives), Department of Minimally Invasive Cancer Therapy (Gifu Welfare Federation of Agricultural Cooperatives, MIYARISAN PHARMACEUTICAL CO. LTD., Sekigahara Town), Department of community-based Radiology (Japanese Red Cross Takayama Hospital), Department of Abuse Prevention Emergency Medicine (Gifu City Hospital), Department of Infection Control (Gifu Prefecture), Department of Preventive Treatment of Locomotive Syndrome (Gifu Welfare Federation of Agricultural Cooperatives), Department of Clinical Anatomy Development Studies (Gifu Welfare Federation of Agricultural Cooperatives), Department of Clinical Genomics (Chubu Yakuhin Co., Ltd.), Department of Early Diagnosis and Preventive Medicine for Rare Intractable Pediatric Diseases (Gifu Research Center for Public Health), Department of Perioperative Pain Control and Human Resources Development in Perioperative Medicine (Gifu Welfare Federation of Agricultural Cooperatives), Department of Cancer Advanced Treatment and International Region Support (Koseikai Social Medical Corporation)				
		Joint Research Course		Phage Biologics Research Course (Astellas Pharma Inc.)				
Engineering	Doctoral Program	Department of Engineering Science						
		International Joint Department of Integrated Mechanical Engineering between Indian Institute of Technology Guwahati and Gifu University						
		International Joint Department of Materials Science and Engineering between National University of Malaysia and Gifu University						
Natural Science and Technology	Master's Program	Department of Life Science and Chemistry	Courses	Chemistry and Drug Discovery, Molecular Life Science, Life Science for Food				
		Department of Agricultural and Environmental Science		Plant Production, Animal Science, Environmental Science and Ecology				
		Department of Civil and Environmental Engineering		Environment Studies, Disaster Reduction Studies				
		Department of Materials Science and Procession		Materials Chemistry, Materials Processing				
		Department of Intelligence Science and Engineering		Intelligent Mechanical Engineering, Informatics, Applied Mathematics and Physics				
		Department of Energy Engineering		Energy Conversion, Electrical and Energy System Engineering				
	International Joint Department of Food Science and Technology between Indian Institute of Technology Guwahati and Gifu University							
Joint Graduate School of Veterinary Sciences	Doctoral Program	Joint Major of Veterinary Sciences	Department	Basic Veterinary Science, Pathogenetic/Applied Veterinary Science, Clinical Veterinary Science				
United Graduate School of Agricultural Science	Doctoral Program	Department of Science of Biological Production	Major Chairs	Plant Production & Management, Animal Resource Production				
		Department of Science of Biological Environment		Agricultural & Environmental Engineering, Management of Biological Environment				
		Department of Science of Biological Resources		Utilization of Biological Resources, Smart Material Science, Regulation of Biological Functions				
	International Joint Department of Food Science and Technology between Indian Institute of Technology Guwahati and Gifu University							
United Graduate School of Drug Discovery and Medical Information Sciences	Doctoral Program	Medicinal Sciences	Research Fields	Biological Molecular Sciences, System Biological Technologies				
			Endowed Course	Kotosugi Laboratory (KOTOSUGI Co.,Ltd.)				
			Joint Research Course	Department of Multi-stage polymerized fermentation (NIHON SHIZEN HAKKO CO. LTD.)				
		Medical Information Sciences	Research Fields	Biomedical Informatics, Biofunctional Control				

■ Library

Library Collections

As of April 1, 2023

Classification	Books (volumes)			Periodicals (titles)		
	Japanese	Foreign	Total	Japanese	Foreign	Total
University Library	532,532	217,125	749,657	9,767	3,885	13,652
Medical Library	83,237	86,704	169,941	1,527	1,804	3,331

About 7,700 titles of electronic-journals (Elsevier, Springer, etc.), about 24,000 titles of electronic books such as NetLibrary, and Academic database (Scopus, SciFinder-n(Academic), etc.) are available.



Reception Counter & Entrance Gate

Opening Hours / Closing Days

Classification	Monday - Friday	Saturday	Sunday, National Holiday (examination periods only)	Closing Days		
University Library	9:00~19:00 * 1)	10:00~18:00	10:00~18:00	Sundays, National Holidays * 2)	Summer Holidays(Aug.11~20) Winter Holidays(Dec.28~Jan.4)	Some Saturdays during vacation periods
Medical Library	8:30~19:00 * 1)	10:00~18:00		Sundays, National Holidays	Summer Holidays(Aug.11~20) Winter Holidays(Dec.28~Jan.4)	

Note: The closing days or times are subject to change * 1) The opening hours may be shortened on weekdays (see the website for opening hours) * 2) Examination periods excepted

Utilization (2022)

Classification		Staff	Students	Visitors	Total
Number of Users	University Library	4,356	115,815	1,187	121,681
	Book Collection Area and Others				
	Presentation Room * 1)		323		
	Medical Library	3,862	22,090	1,417	27,369
Total					149,050
Number of Circulation	University Library	3,403	32,493	589	36,485
	Medical Library	667	5,540	12	6,219
	Total	4,070	38,033	601	42,704
Photo Copying Service	University Library	1,467		724	2,191
	Medical Library	636		1,470	2,106
	Total	2,103		2,194	4,297

Note: University Library opens 275 days and Medical Library opens 280 days.

* 1) Presentation Room is a space for student support (individual or group) equipped with a projector and WiFi.



University Library

■ Archive Core

Archive Core was established in the University Library in commemoration of Gifu University's 70th Anniversary in June 2019. It comprises two exhibition spaces: "PRAETER" and "FUTURUM."

Materials in Storage

Faculty of Education	World's oldest printed scripture, "Hyakuman-to (Million Tower), body Armor of the Ogawa Family
Faculty of Applied Biological Sciences	Silkworm anatomy model, illustration of paddy insect pest
Faculty of Engineering	Plasma chemical vapor deposition (CVD), flexible solar battery
School of Medicine, University Hospital	Anatomical drawing by Toshio Tange, Japanese painting by Tadashi Moriya
Faculty of Regional Studies	Local government records/references, local history documents (stored by the Center for Local Archives)

Note: In addition to the above items, Archive Core houses archeological papers (over 90,000), artworks (approx. 60 pictures, paintings, etc.), stuffed animals, samples of eggs (approx. 1,100) and anatomical drawings (approx. 534).



Stuffed animals displayed at PRAETER

■ University Hospital

As the sole university hospital and only special functioning hospital in Gifu Prefecture, the University Hospital provides highly advanced medical care. The Hospital places particular emphasis on advanced medical care for five categories of major disease (cancer, cardiac infarction, stroke, diabetes, and psychiatric illness), and on five medical services (emergency medical, disaster medical, rural and community medical, perinatal, and pediatric care) viewed as high priority by the Japanese government. It has also been designated as a specialized hospital for diseases that are difficult to treat, such as cancer, hepatitis, AIDS, and so on. In May 2018, the Hospital was designated as a nuclear emergency core hospital, as well as an allergy disease core hospital. In addition, the Hospital is currently serving as an advanced emergency medical service center and a primary cerebral apoplexy center.

In January 2019, the Gifu Medical Regional Consortium was established with Gifu University Hospital as a member for the purpose of medical data integration. The data integration within the central Tokai region started when the Tokai National Higher Education and Research System was launched in April 2020.

In November 2020, the Deaf Children Support Center of the Hospital started its operation as one of the facilities promoting in-house and external collaborations, and interdepartmental cooperation among teams of medical experts within the Hospital. Newly added divisions and departments starting in April 2022 (namely, Division of Infection Control, Quality Management Division, Department of Comprehensive Clinical Training, and Training and Career Development Support Center for Medical Staff) are also strongly committed to providing high quality medicine for every Gifu citizen.

The ultimate goals of the hospital are to create and implement a "Smart Hospital" that offers the best catered medical treatments to our patients in the post-COVID world in response to ever-growing demands for better public health care provisions. With the safety and security of people and society as our utmost priority, the University Hospital remains committed to medical safety, acceleration of clinical research, global human resource development, and providing advanced, quality medical treatment for all as the sole special functioning hospital in the region.



University Hospital

Number of Patients (2022)

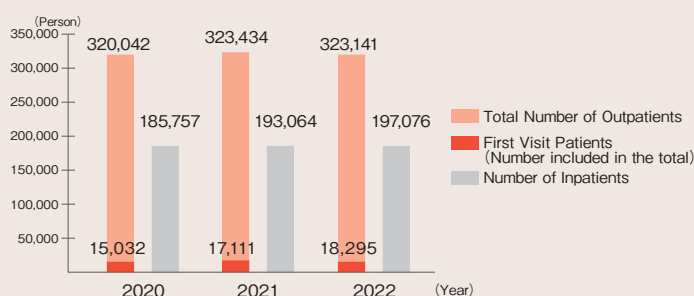
Inpatients	Total Number of Patients	197,076	Outpatients	First Visit Patients	18,295
	Average per Day	539.93		Revisit Patients	304,846
	Bed Occupancy Rate	87.9%		Total	323,141
	Operation Days	365		Average per Day	1,329.79
				Days for Outpatient treatment	243

Clinical Department and Number of Beds

As of April 1, 2023

Classification	Number of Beds	Classification	Number of Beds
Internal Medicine I	58	Oto-Rhino-Laryngology	
Hematology		Plastic & Reconstructive Surgery	32
Internal Medicine II	51	Dermatology	11
Internal Medicine III	21	Urology	22
Neurology	19	Psychiatry	37
General Internal Medicine	12	Pediatrics	28
Cardiovascular Surgery		Radiology	1
General Thoracic Surgery	103	Anesthesiology & Pain Medicine	1
Digestive Surgery		Dentistry, Oral & Maxillofacial Surgery	8
Breast Surgery		Advanced Critical Care Center	30
Obstetrics & Gynecology	33	Intensive Care Unit	6
Orthopaedic Surgery	49	Neonatal Intensive Care Unit	12
Neurosurgery	37	Common	29
Ophthalmology	14	Total	614

Changes in the Number of Patients



Central Clinical Facilities		
Division of Clinical Laboratory	Center for Nutrition Support & Infection Control	Genomic Disease and Clinical Genetics Center
Operation Division	Cancer Center	Bed Control Center
Radiology Services	AIDS Clinical Center	Respiratory Center
Supplies Division	Center for Liver Disease	Allergy Center
Division of Transfusion Medicine & Cell Therapy	Rehabilitation Division	International Medical Center
Pathology Division	Center of Reproductive and Perinatal Care	Cardiovascular Center
General Medicine	Medical Instrument Center	Inflammatory Bowel Disease Center
Medical Information Division	High-level Imaging Diagnosis Center	Deaf Children Support Center
Endoscopy Center	Neonatal Intensive Care Unit	Division of Medical Secretary Services
Advanced Critical Care Center	Autopsy Imaging Center	Dietary Management Division
Center for Patient Flow Management	Stroke Center	

Patient Safety Division	Center for Clinical Training & Career Development
Division of Pharmacy	Training Center for Nurse Designated Procedures
Division of Nursing	The Minimally Invasive Surgery Center for Training & Education
Medical Record Management Division	Training and Career Development Support Center for Medical Staff
Division of Infection Control	Innovative & Clinical Research Promotion Center
Quality Management Division	Clinical Ethics Division
Department of Comprehensive Clinical Training	"Sawayaka" Quality Service Promotion Division

■ Animal Medical Center

The Animal Medical Center is the only facility dedicated to veterinary education, research, and treatment in the Chubu region. In response to the increasing need for veterinary practices in recent years and to provide advanced medical treatment that pet owners expect, a new clinical ward and multipurpose building (former Linac Center) were built onto the Animal Medical Center in April 2010 as well as the MRI-CT Ward in April 2012. The Center's new clinical ward has private consultation rooms, a positive pressure surgery room which can also be used for brain surgery, and an intensive-care unit. It is an advanced facility equipped with electronic medical charts and diagnostic imaging units. The Linac Center was the first of its kind at a Japanese national university to have a high-energy radiation LINAC (linear accelerator) treatment system, and the MRI Ward was likewise the first to have an MRI (magnetic resonance imaging) system. In addition, the Center will start to operate the high precision radioactive treatment equipment in 2023.

One of the special features of the Center is the operation of multiple departments to treat both companion and farm animals. The department of internal medicine, surgery, oncology, anesthesiology, neurology, and orthopedic surgery for companion animals in particular is receiving about 10,500 cases of referrals annually from private hospitals in the Tokai, Kinki and Hokuriku regions in Japan. On the other hand, the departments treating farm animals are playing an important role in the medical care of farm animals in Gifu area.



Ward and Room

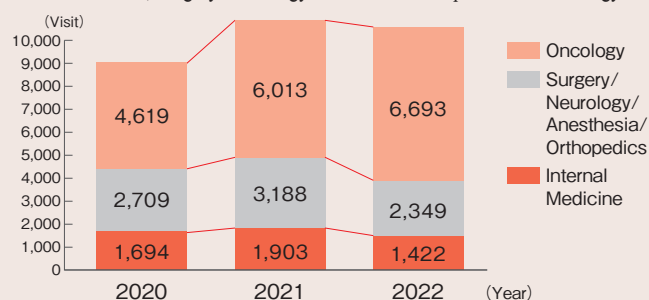
As of April 1, 2023

Name	Floor Space(m ²)	Facility Information
Clinical Ward	912	1 st floor: 7 Consultation Rooms, Ultrasonography Room, Treatment Room, Examination Room 1, Pharmacist, Reception and Office 2 nd floor: Positive Pressure Surgery Room, General Operating Room (3 operating tables), Operation Preparation Room, Intensive-Care Unit, Recovery Room, 2 Nap Rooms
Multipurpose Building, MRI-CT Building	341	Linac Room, MRI Room, Control Room
Clinical Ward (1st floor)	438	Endoscope & Laparoscope Room, Dental Room, X-ray and Image Analysis Room, Examination Room 2, Director's Room/Counseling Room, Administrative Office
CT Ward	47	X-ray CT Imaging Room, Control Room
Animal Management & Care Ward	260	Inpatients Rooms for Sick Animals, Animal Blood Donation Room, Medical Office
Linac Building	400	High Precision Radioactive Treatment Room, Resting Room, Dog Accommodation Unit
Total	2,398	

Total Number of Clinical Visits by Animal Type

Year	Companion Animals				Farm Animals					Total
	Dogs	Cats	Others	Subtotal	Cattle	Horses	Pigs	Sheep/Goats	Subtotal	
2020	7,560	1,459	1	9,020	0	2	0	1	3	9,023
2021	9,111	1,980	1	11,092	3	2	0	7	12	11,104
2022	8,677	1,781	0	10,458	1	0	2	4	7	10,465

Changes in the Total Number of Clinical Visits to the Department of Internal Medicine, Surgery/Neurology/Anesthesia/Orthopedics and Oncology



■ Collaboration Center for Medical Education

Medical Education Development Center (MEDC)

The Medical Education Development Center (MEDC) was established in 2001 as a collaboration center for medical education to promote the development of human resources who can contribute to medical education and collaborative and joint research with medical education institutions both in Japan and overseas. Initially accredited in April 2010, MEDC is the only collaboration center for medical education accredited by the Ministry of Education, Culture, Sports, Science, and Technology. MEDC was re-accredited for another five years in April 2020. Among many other things, MEDC conducts a Medical Education Seminar and Workshop three times a year, which has won high praise as a nation-wide program for Faculty Development. MEDC also launched a program to nurture leaders in the health professions education. MEDC Fellows/ Associates Certificates are awarded to those who have completed this course.

The Educational Development and Improvement Division of MEDC in particular focuses on developing medical education and proper skill assessments for health professionals. In addition, the Teacher Development Division supports career-building and secures provision of quality education for medical leaders.

MEDC makes continued efforts for improvement of professionalism, outcome-based medical, and computer-supported education, portfolio assessment systems, international exchanges, medical English education, Master of Health Professions Education, and doctoral programs in medical education.

[Educational Development and Improvement Division, Teacher Development Division]



Tutorial Education



Medical Communication Practice



Seminar and Workshop for Medical Education



Clinical Skills Education

■ Centers for Education and Research Activity



■ Satellite Campus / Seminar House

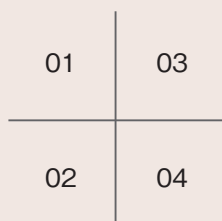
Gifu University Satellite Campus [Opened in October 2012]
(4th floor of the East Tower at Gifu Skywing 37, 6-31 Yoshinomachi, Gifu City)

The Gifu University Satellite Campus, directly connected to JR Gifu Station, has two multipurpose rooms that can be used for classes, seminars, lectures and research presentations, "Learning Commons" where students can study on their own, two meeting rooms for business consulting, and other purposes.

(Gifu University Satellite Campus is scheduled to close at the end of June, 2023.)



Gifu Skywing 37



01 Center for Collaborative Study with Community

As a "core for regional revitalization," the Center for Collaborative Study with Community seeks to be a region-based university. The Center's priority agendas to work for the benefits of local communities are as follows:

- Fostering next-generation regional leaders who are well-versed in community affairs, capable of finding and contributing to solutions of regional issues ("Next-Generation Regional Leader Fostering Program")
- Promotion of research to resolve regional problems (region-oriented research program), and
- Creation of a "place for dialogue and co-creation" for Gifu University and local citizens to talk and discuss possible solutions to regional issues, and co-create new value ("Gifu Future Center").

In addition, the Center has established the Gifu Center for collaborative activities between communities and schools (GIFU CCCS) jointly with Gifu Prefecture to foster coordinators or "social education supervisors", and implements senior high school and university cooperation projects together with Gifu Prefecture and Gifu Prefectural Board of Education,

In order to promote these activities, we have built the relationship of municipal governments, educational organizations, communities, financial institutions, civic organizations, and so on, and serves as a liaison among them.

02 River Basin Research Center

The River Basin Research Center at Gifu University has been developing "River Basin Sciences," an academic research field for conservation and sustainable development of river basin. The Center is the main institution for the study of environmental sciences at Gifu University and operates in conjunction with universities, research institutes, other relevant organizations, and regional communities inside and outside Japan. Specifically, the Center carries out analyses of natural and artificial phenomena, including observation of plants, waters, and soils found in river basin. It also conducts academic research and technological development for river basin environment conservation, and for disaster prevention and mitigation activities.

[Division of Forest Function, Division of Water and Material Dynamics, Takayama Field Station, Promotion Office of Gifu University Rearing Program for Basin Water Environmental Leaders, Joint Research Office, Office for Promotion of Regional Collaboration]

03 Organization for Promotion of Globalization Center for Japanese Language and Culture

The Center for Japanese Language and Culture educates international students in Japanese language and culture and Japanese students in international understanding. The center plays an important role in the university's internationalization initiatives with a special focus on the promotion of intercultural exchange among students. To this end, the center provides cross-cultural communication programs in general education courses for both Japanese and international students. The Exchange Lounge in the center serves as a venue for interchange between Japanese and international students; a wide range of activities including learning, academic support by student monitors, and information gathering and distribution for studying abroad are organized there.

04 Health Administration Center

The Health Administration Center assumes its main role in the health promotion and development of university students and faculties/staff based on the School Health and Safety Act and the Industrial Safety and Health Act.

The Center provides annual health checkups and health counseling/support for all students and faculties/staff. The Center also provides first aid services, health advice/education, health enlightenment activities, and so on. Furthermore, the Center implements campus health plans and offers a wide range of services, among which personalized mental healthcare for students, support for students with special needs, and promotion of well-being of international students are high on the Center's agenda.

The Center conducts epidemiological analysis relating to students and faculties/staff health issues, which has contributed to significant health policy development on Gifu University campus as well as other universities in Gifu Prefecture.

Gifu University Hayano Residence Seminar House [Opened in April 2013] (1777 Hiruicho, Ogaki City)

The Gifu University Seminar House, which is along Kyu-Nakasendo (a route from the Edo period) in Hiruicho, Ogaki City is the former residence of Dr. Saburo Hayano, the 7th president of Gifu University.

It has a seminar room for classes and lectures, an exhibition room where students' work and documents related to regional history and culture are displayed, and a meeting room that can be used as a center for fieldwork.

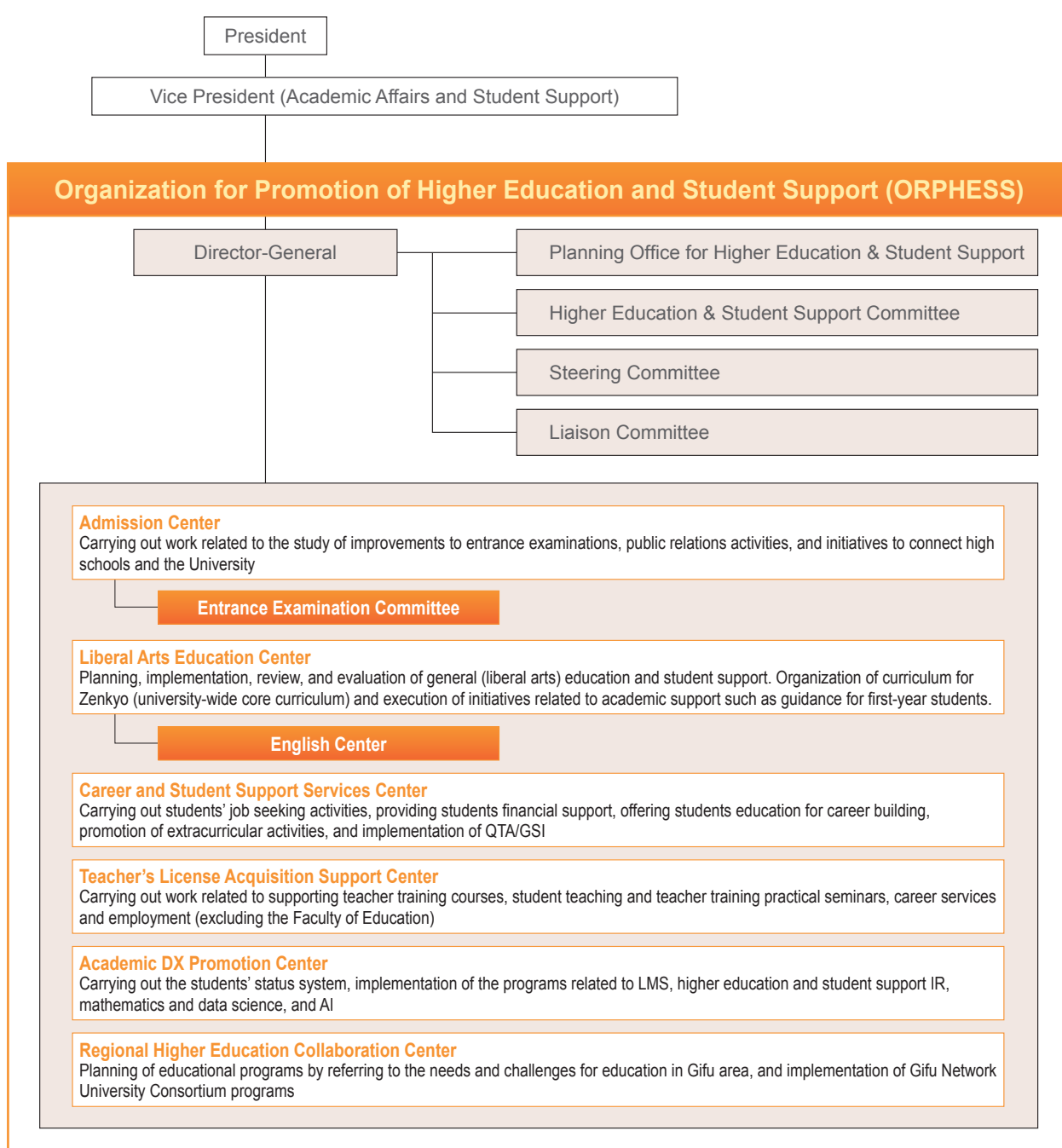


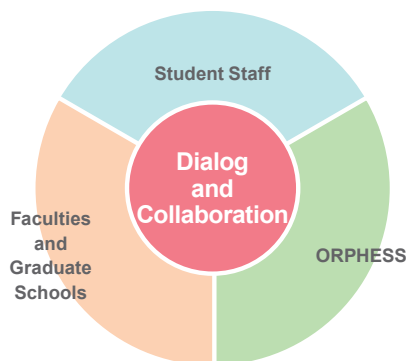
Hayano Residence Seminar House

Education

■ Organization for Promotion of Higher Education and Student Support

[Organization Chart]





ORPHESS/faculty matrix-type organization

A structure designed to seamlessly combine specialized education offered by undergraduate faculties with a core education that is overseen by ORPHESS

Applying the results of individual optimization to facilitate overall optimization

Application of results accumulated by faculties and other entities to the entire university from the standpoint of overall optimization

Reforming governance and transforming the organizational culture

Consensus-building through dialog and collaboration and the facilitation of reform

A well-organized educational environment

The University's single, integrated campus as a venue for daily dialog and collaboration

ORPHESS is also home to the Planning Office for Higher Education & Student Support which plans educational activities, evaluates and analyzes educational effectiveness, and operates the educational quality assurance system. ORPHESS also includes four Divisions—Admission Center, Liberal Arts Education Center, Teacher's License Acquisition Support Center, and Student Support Services Center to facilitate planning and implementation. The English Center was established in 2018 to coordinate and promote English education at Gifu University.

The principal operational duties of ORPHESS are as follows:

- (1) Securing the quality of higher education
- (2) Planning and implementing general education
- (3) Planning and implementing student admissions, learning support, support for student life, career support, and support for other aspects of University life
- (4) Planning, collaborating and implementing community-oriented education
- (5) Supporting teacher training course (except the Faculty of Education)
- (6) Planning and carrying out university-wide faculty development
- (7) Planning and implementing education through partnerships with other organizations
- (8) Carrying out other duties as necessary in order to achieve the ORPHESS's goals

Gifu University strives to foster a carefully defined set of fundamental abilities in students through all educational activities, together with specialized skills on the part of each faculty and graduate school in accordance with its Diploma Policy, Curriculum Policy, and Admission Policy, which collectively govern all of the University's activities. To encourage each student to take a proactive approach to his or her education, we are committed to (1) enhancing structures that support learning from admission to graduation, as well as structures that support student life; (2) continually verifying that our undergraduate and graduate programs accord with our three aforementioned primary policies and striving to improve the University's structures; and (3) increasing the University's overall educational capabilities so as to more effectively maximize each faculty's potential. To achieve these goals, it is essential that we take a broad view of the entire University's educational activities when planning programs, working to improve each faculty and graduate school's educational activities, and implementing mechanisms to support student learning. The Organization for Promotion of Higher Education and Student Support (ORPHESS) is characterized by a commitment to bring faculties, graduate schools, and student staff together in dialog and collaboration in order to achieve the goals described above. ORPHESS was launched in December 2013 with staff members drawn from a variety of departments at the University.

■ Number of Students

Undergraduate

As of May 1, 2023

Faculty / School	Course	Admission Capacity	3rd Year Mid-Course Entrants	Enrollment						Total
				1 st year	2 nd year	3 rd year	4 th year	5 th year	6 th year	
Education		220		232 (130)	233 (133)	228 (127)	277 (147)			970 (537)
										0 (0)
Regional Studies		100	10	105 (61)	104 (57)	111 (69)	136 (81)			456 (268)
				1 (0)	2 (0)		7 (1)			10 (1)
School of Medicine	Medical Course	110		118 (56)	115 (44)	99 (40)	97 (30)	104 (35)	119 (31)	652 (236)
	Nursing Course	80		1 (0)	1 (1)	1 (1)	1 (0)	2 (1)	1 (1)	7 (4)
				84 (78)	80 (73)	85 (83)	74 (70)			323 (304)
										0 (0)
Engineering		510	30	546 (95)	547 (79)	517 (86)	623 (88)			2,233 (348)
				1 (1)	5 (2)	5 (1)	8 (2)			19 (6)
Applied Biological Sciences	Course of Applied Life Science	160	10	171 (105)	181 (91)	171 (112)	181 (98)			704 (406)
	Course of Agricultural and Environmental Science			1 (1)	2 (2)	2 (1)	2 (1)			7 (5)
	Joint Department of Veterinary Medicine	30		34 (19)	36 (22)	28 (21)	28 (20)	32 (22)	29 (17)	187 (121)
										0 (0)
School of Social System Management		30		30 (14)	32 (22)	32 (21)				94 (57)
										0 (0)
Total Number of Undergraduate Students		1,240	50	1,320 (558)	1,328 (521)	1,271 (559)	1,416 (534)	136 (57)	148 (48)	5,619 (2,277)
				4 (2)	10 (5)	8 (3)	18 (4)	2 (1)	1 (1)	43 (16)

The number of "Enrollment" includes international students. () indicates the number of female students, and the lower row shows the number of international students.

Graduate

Professional Degree Program (Teacher Education Course)

As of May 1, 2023

Graduate School	Program	Admission Capacity	Enrollment			Degree
			1 st year	2 nd year	Total	
Education	Professional Degree Program	40	33 (9)	34 (12)	67 (21)	Master of Education (professional)

Master's Program

As of May 1, 2023

Graduate School	Program	Admission Capacity	Enrollment			Degree
			1 st year	2 nd year	Total	
Education	Master's Program	5	5 (5)	13 (7)	18 (12)	Master of Education
Regional Studies	Master's Program	20	14 (8)	19 (9)	33 (17)	Master of Regional Studies
			8 (7)	12 (6)	20 (13)	
Medicine (Health Professions Education)	Master's Program	6	7 (2)	6 (2)	13 (4)	Master of Health Professions Education
Medicine (Nursing Science)	Master's Program	8	6 (4)	12 (8)	18 (12)	Master of Nursing Science
Natural Science and Technology	Master's Program	375	493 (118)	474 (102)	967 (220)	Master of Applied Biological Sciences, Engineering or Food Science and Technology
			34 (11)	28 (11)	62 (22)	

Doctoral Program

As of May 1, 2023

Graduate School	Program	Admission Capacity	Enrollment					Degree
			1 st year	2 nd year	3 rd year	4 th year	Total	
Medicine	Doctoral Program	47	53 (14)	61 (13)	35 (6)	75 (26)	224 (59)	Ph.D. in Medical Sciences
			3 (2)			3 (1)	6 (3)	
	Doctoral Program				2 (2)		2 (2)	Ph.D. in Regeneration and Advanced Medical Sciences
Engineering	Doctoral Program	27	27 (7)	25 (7)	63 (13)		115 (27)	Ph.D. in Engineering or Philosophy
			15 (4)	14 (5)	29 (8)		58 (17)	
Joint Graduate School of Veterinary Sciences	Doctoral Program	6	7 (1)	5 (0)	7 (2)	6 (1)	25 (4)	Ph.D. in Veterinary Sciences
				2 (0)		2 (0)	4 (0)	
United Graduate School of Agricultural Science	Doctoral Program *1	20	34 (17)	25 (10)	58 (22)		117 (49)	Ph.D. in Agricultural Science or Philosophy
			17 (12)	14 (6)	25 (10)		56 (28)	
United Graduate School of Veterinary Sciences	Doctoral Program					5 (2)	5 (2)	Ph.D. in Veterinary Sciences
United Graduate School of Drug Discovery and Medical Information Sciences	Doctoral Program *1	6	5 (2)	5 (2)	10 (4)		20 (8)	Ph.D. in Engineering, Medical Sciences, or Pharmaceutical Science
			1 (1)	2 (2)			3 (3)	
Total Number of Graduate Students		560					1,624 (437)	
							209 (86)	

The number of "Enrollment" includes international students. () indicates the number of female students, and the lower row shows the number of international students.

*1 United Graduate School of Agricultural Science and United Graduate School of Drug Discovery and Medical Information Sciences have three-year Doctoral Program only.

Number of Students of the United Graduate Schools by Participating University

As of May 1, 2023

United Graduate School	Enrollment					Total
	Participating University	1 st year	2 nd year	3 rd year	4 th year	
Agricultural Science	Shizuoka University	4 (3)	4 (3)	10 (3)		18 (9)
	Gifu University	30 (14)	21 (7)	48 (19)		99 (40)
Veterinary Sciences	Tokyo University of Agriculture and Technology				3 (0)	3 (0)
	Gifu University				2 (2)	2 (2)
Total		34 (17)	25 (10)	58 (22)	5 (2)	122 (51)

The number of "Enrollment" includes international students. () indicates the number of female students.

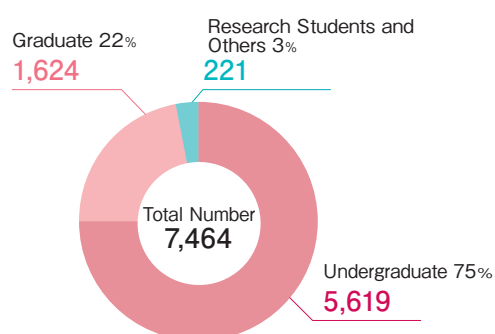
Research Students / Non-Degree-Seeking Students / Auditing Students

As of May 1, 2023

	Research Students	Special Research Students	Non-Degree-Seeking Students	Auditing Students	Special Auditing Students	External Training Course for In-service Teachers	International Students in Japanese Language and Culture Studies Course	Short-Term Special-Subject External Trainees	Total
Faculty of Education	2 (2)		2 (2)		2 (1)				6 (5)
Faculty of Regional Studies	6 (4)				1 (0)				7 (4)
School of Medicine	8 (1)								8 (1)
Faculty of Engineering	7 (0)		1 (0)		9 (0)				17 (0)
Faculty of Applied Biological Sciences	2 (2)								2 (2)
School of Social System Management	3 (1)								3 (1)
Graduate School of Education	4 (3)	19 (7)		1 (1)	1 (1)				25 (12)
Graduate School of Regional Studies		1 (0)							1 (0)
Graduate School of Medicine									0 (0)
Graduate School of Engineering									0 (0)
Graduate School of Natural Science and Technology	1 (0)	4 (0)	29 (8)		3 (0)				37 (8)
Joint Department of Veterinary Medicine									0 (0)
United Graduate School of Agricultural Science		1 (0)							1 (0)
United Graduate School of Veterinary Sciences									0 (0)
Organization for Promotion of Higher Education and Student Support									0 (0)
River Basin Research Center	3 (0)								3 (0)
Center for Japanese Language and Culture, Organization for Promotion of Globalization					2 (1)		5 (5)		7 (6)
Gifu Network University Consortium*					104 (58)				104 (58)
Total	36 (13)	25 (7)	32 (10)	1 (1)	122 (61)	0 (0)	5 (5)	0 (0)	221 (97)

* Gifu Network University Consortium (GUC) is the association of 25 higher educational institutions within Gifu Prefecture, and Gifu Prefecture. Students are able to take courses at other universities, and the earned credits are transferable under the credit transfer system. The figure in brackets indicates the number of international students and is included in the total.

Number of Students



Gifu University Faculty of Education Affiliated Compulsory School System (Elementary-Junior High)

As of May 1, 2023

Education Course	Class	Number of Classes	Admission Capacity	Total Number of Students
First Course (Elementary)	Regular Class	18	96	594
	Special Needs Class	3	3	17
Second Course (Junior High)	Regular Class	9	105	309
	Special Needs Class	3	6	15
Total				935

■ Applicants and Admissions

Undergraduate

2023

Faculty/School	1 st year Students					3 rd year Mid-Course Entrants				
	Admission Capacity	Applicants	Examinees	Successful Applicants	Entrants	Admission Capacity	Applicants	Examinees	Successful Applicants	Entrants
Education	220	513	460	243	232	-	-	-	-	-
Regional Studies	100	435	285	113	105	10	20	12	10	8
School of Medicine	Medical Course	110	702	540	111	110	-	-	-	-
	Nursing Course	80	378	226	82	80	-	-	-	-
Engineering	510	2,074	1,438	570	523	30	86	79	39	25
Applied Biological Sciences	Course of Applied Life Science Course of Agricultural and Environmental Science	160	583	400	185	171	10	29	28	10
	Joint Department of Veterinary Medicine	30	135	124	33	33	-	-	-	-
School of Social System Management	30	68	56	31	30	-	-	-	-	-
Total	1,240	4,888	3,529	1,368	1,284	50	135	119	59	40

* The number of applicants to the School of Medicine does not include the examinees who failed in the first screening(general examination,first round) process conducted at the general examination and the latter half of the examination schedule.

* The number of international students included.

Graduate School

2023

Graduate School		Admission Capacity	Applicants	Examinees	Successful Applicants	Entrants
Education	Professional Degree Program (Teacher Education Course)	40	39	37	35	33
	Master's Program	5	23	23	10	5
Regional Studies	Master's Program	20	21	21	16	14
Medicine	Nursing Sciences (Master's Program)	8	8	8	7	6
	Health Professions Education (Master's Program)	6	12	11	7	7
	Medical Sciences (Doctoral Program)	47	51	51	49	46
Engineering	Doctoral Program	27	17	17	17	17
Natural Science and Technology	Master's Program	375	568	551	507	484
Joint Graduate School of Veterinary Sciences	Doctoral Program	6	5	5	5	5
United Graduate School of Agricultural Science	Doctoral Program	20	24	23	23	22
United Graduate School of Drug Discovery and Medical Information Sciences	Doctoral Program	6	0	0	0	0
Total		560	768	747	676	639

* The number of newly-enrolled students is as of April 2023. (The number of newly-enrolled students in October, 2023:2 at Graduate School of Medicine, 6 at United Graduate School of Agricultural Science)

* The number of international students included.

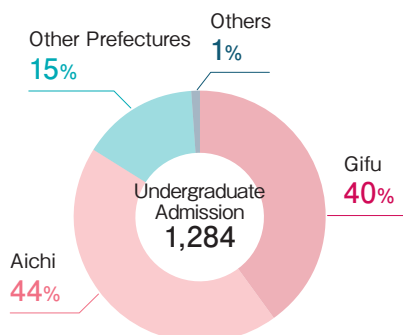
Undergraduate Admission by Locations of High Schools (The number of 3rd year Mid-Course Entrants excluded.)

2023

Faculty/School	Aichi	Gifu	Shiga	Mie	Osaka	Shizuoka	Hyogo	Kyoto	Other Prefectures	* Others	Total
Education	57	159	1	2	0	4	2	0	7	0	232
Regional Studies	44	48	1	0	0	3	1	1	5	2	105
School of Medicine	76	78	1	0	3	1	1	2	28	0	190
Engineering	293	168	10	8	6	4	5	4	25	0	523
Applied Biological Sciences	90	49	9	8	6	1	3	4	32	2	204
School of Social System Management	10	15	2	0	0	1	0	0	2	0	30
Total	570	517	24	18	15	14	12	11	99	4	1,284

* "Others" include Certificate for Students Achieving the Proficiency Level of Upper Secondary School Graduates, foreign schools, etc.

* The number of international students included.



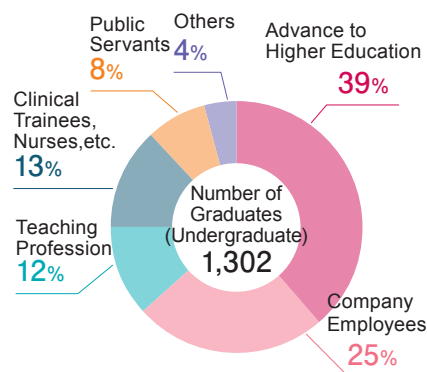
Number of Graduates (Undergraduate) / Career Paths

Career Paths of Graduates (Undergraduate)

Number of Graduates (Undergraduate)

Faculty/School		2022	Cumulative Total
Education		258	19,708
Regional Studies		113	2,748
School of Medicine		182	6,287
Engineering	Day Course	538	26,992
	Evening Course		847
Applied Biological Sciences		211	14,383 *
Total		1,302	70,965

* Graduates of Faculty of Agriculture included.



Career Paths of 2022 Graduates

Career Paths

As of May 1, 2023

Faculty/School Classification	Education	Regional Studies	School of Medicine		Engineering	Applied Biological Sciences	Total
			Medical	Nursing			
Graduates	258 (148)	113 (65)	103 (35)	79 (77)	538 (87)	211 (131)	1,302 (543)
Advance to Higher Education	33 (13)	4 (1)		3 (2)	362 (46)	101 (61)	503 (123)
Company Employees	215 (130)	104 (62)	1 (0)	73 (72)	160 (38)	99 (65)	652 (367)
Adult Students (Staying in Workforce)							0 (0)
Clinical Trainees			97 (34)				97 (34)
Others	10 (5)	5 (2)	5 (1)	3 (3)	16 (3)	11 (5)	50 (19)
Total	258 (148)	113 (65)	103 (35)	79 (77)	538 (87)	211 (131)	1,302 (543)

Employment Status by Industry

Faculty/School Field of Business	Education	Regional Studies	School of Medicine		Engineering	Applied Biological Sciences	Total
			Medical	Nursing			
Agriculture and Forestry						6 (4)	6 (4)
Mining, Quarrying, Gravel Collection							0 (0)
Construction		5 (4)			18 (3)	4 (3)	27 (10)
Manufacturing	10 (8)	9 (1)			71 (19)	20 (15)	110 (43)
Utility		2 (2)			1 (1)		3 (3)
Information and Communications	9 (5)	11 (8)			28 (5)	5 (4)	53 (22)
Transport and Postal Services		2 (1)			4 (1)		6 (2)
Wholesale and Retail Business	6 (2)	6 (4)			1 (1)	4 (2)	17 (9)
Finance and Insurance	4 (2)	10 (3)			1 (0)	1 (1)	16 (6)
Real Estate Business		1 (1)			1 (0)		2 (1)
Scientific Research, Professional and Technical Services		5 (3)			1 (0)	28 (15)	34 (18)
Accommodation and Eatery	1 (1)	2 (2)					3 (3)
Life-related Services and Entertainment		4 (3)			2 (1)		6 (4)
School Education	145 (89)	3 (2)			1 (0)	4 (4)	153 (95)
Education Support Business	6 (2)	1 (0)					7 (2)
Medical, Health Care and Welfare		1 (0)		73 (72)		3 (3)	77 (75)
Social Insurance, Social Welfare and Care Services	3 (2)	2 (1)				1 (0)	6 (3)
JA, Post Office, Co-op	1 (1)	1 (0)				2 (1)	4 (2)
Religion, Other Services	6 (2)	3 (2)			1 (0)		10 (4)
State Government Services	3 (2)	11 (8)			7 (2)	2 (2)	23 (14)
Local Government Services	21 (14)	24 (17)	1 (0)		22 (5)	19 (11)	87 (47)
Others		1 (0)			1 (0)		2 (0)
Total	215 (130)	104 (62)	1 (0)	73 (72)	160 (38)	99 (65)	652 (367)

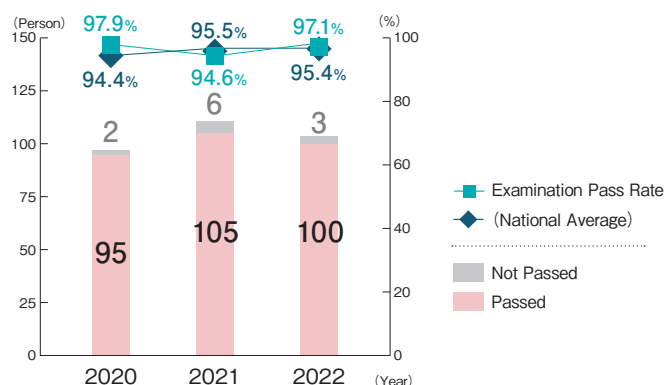
() indicates the number of female graduates.

Medical Licensing Examination Pass Rate / Teacher Employment Rate

National Examination for Medical Practitioners

	2020	2021	2022
Examinees	97	111	103
Passed	95	105	100
Not Passed	2	6	3
Examination Pass Rate	97.9%	94.6%	97.1%
(National Average)	94.4%	95.5%	95.4%

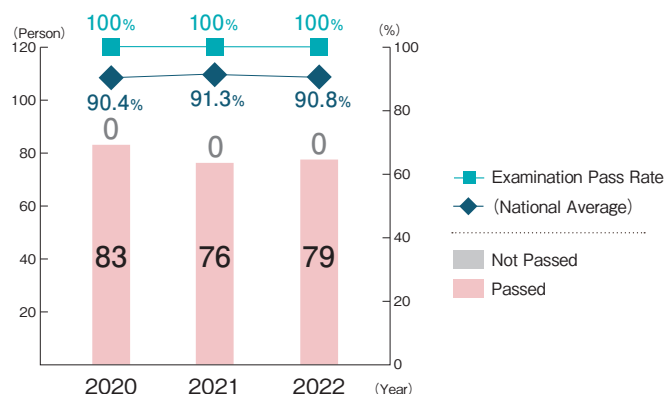
* New graduates only



National Nursing Examination

	2020	2021	2022
Examinees	83	76	79
Passed	83	76	79
Not Passed	0	0	0
Examination Pass Rate	100%	100%	100%
(National Average)	90.4%	91.3%	90.8%

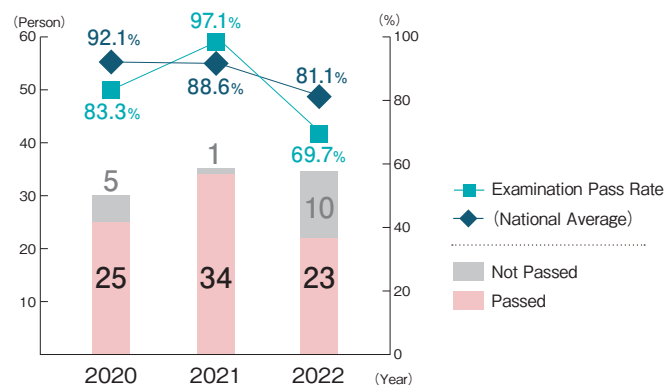
* New graduates only



National Veterinary Examination

	2020	2021	2022
Examinees	30	35	33
Passed	25	34	23
Not Passed	5	1	10
Examination Pass Rate	83.3%	97.1%	69.7%
(National Average)	92.1%	88.6%	81.1%

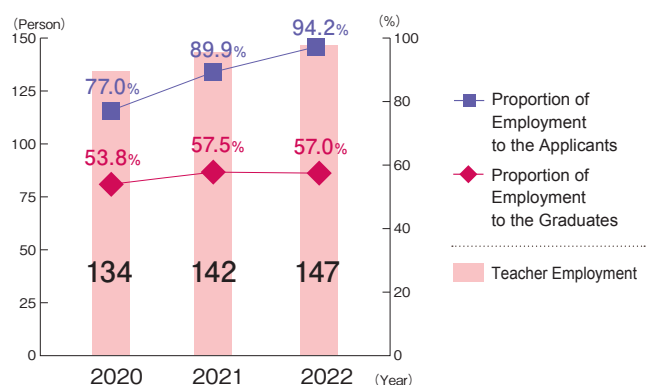
* New graduates only



Teacher Employment Rate (Faculty of Education)

	2020	2021	2022
Graduates	249	247	258
Applicants	174	158	156
Employment (Temporary Teacher)	134	142	147
Proportion of Employment to the Applicants	77.0%	89.9%	94.2%
Proportion of Employment to the Graduates	53.8%	57.5%	57.0%

* Training Course for School Teachers, and Training Course for Teachers at Special Needs School only



■ Number of Graduates (Graduate School) / Career Paths

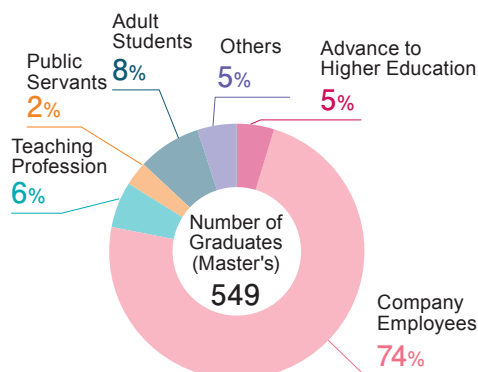
Number of Master's Degrees Awarded

Master's Degree	2022	Cumulative Total
Education	74	1,860 *1
Regional Studies	16	416
Regeneration and Advanced Medical Sciences		197
Health Professions Education	6	18
Nursing	11	111
Engineering	339	10,257
Applied Biological Sciences	103	3,597 *2
Food Science and Technology		4
Total	549	16,460

* 1 Graduates of Education (professional) included.

* 2 Graduates of Faculty of Agriculture included.

Career Paths upon Completion of Master's Program



Career Paths of 2022 Graduates (Master's Program)

Career Paths

As of May 1, 2023

Graduate School Classification	Education		Regional Studies	Medicine	Natural Science and Technology	Total
	Master's Program	Professional Degree Program	Master's Program	Master's Program	Master's Program	
Graduates	50 (31)	24 (12)	16 (10)	17 (12)	442 (104)	549 (169)
Advance to Higher Education			1 (0)		25 (10)	26 (10)
Company Employees	42 (26)	6 (3)	4 (2)		402 (86)	454 (117)
Adult Students (Staying in Workforce)	4 (1)	18 (9)	2 (0)	17 (12)	1 (1)	42 (23)
Clinical Trainees						0 (0)
Others	4 (4)		9 (8)		14 (7)	27 (19)
Total	50 (31)	24 (12)	16 (10)	17 (12)	442 (104)	549 (169)

Employment Status by Industry

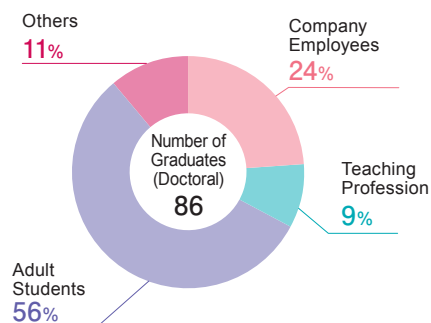
Graduate School Field of Business	Education		Regional Studies	Medicine	Natural Science and Technology	Total
	Master's Program	Professional Degree Program	Master's Program	Master's Program	Master's Program	
Agriculture and Forestry					3 (0)	3 (0)
Mining, Quarrying, Gravel Collection						0 (0)
Construction					19 (2)	19 (2)
Manufacturing			1 (1)		280 (65)	281 (66)
Utility					13 (2)	13 (2)
Information and Communications	3 (2)				48 (2)	51 (4)
Transport and Postal Services	1 (1)				2 (0)	3 (1)
Wholesale and Retail Business			1 (1)		3 (0)	4 (1)
Finance and Insurance			1 (0)			1 (0)
Real Estate Business						0 (0)
Scientific Research, Professional and Technical Services					11 (7)	11 (7)
Accommodation and Eatery						0 (0)
Life-related Services and Entertainment						0 (0)
School Education	27 (14)	6 (3)			1 (0)	34 (17)
Education Support Business	1 (1)				3 (3)	4 (4)
Medical, Health Care and Welfare	4 (2)					4 (2)
Social Insurance, Social Welfare and Care Services	3 (3)					3 (3)
JA, Post Office, Co-op					1 (0)	1 (0)
Religion, Other Services	1 (1)		1 (0)		5 (2)	7 (3)
State Government Services					5 (2)	5 (2)
Local Government Services	2 (2)				7 (0)	9 (2)
Others					1 (1)	1 (1)
Total	42 (26)	6 (3)	4 (2)	0 (0)	402 (86)	454 (117)

() indicates the number of female graduates.

Number of Doctoral Degrees Awarded

Doctoral Degree		2022	Cumulative Total
Medical Sciences	Course Doctorate	34	1,236
	Dissertation Doctorate	3	1,513
Regeneration and Advanced Medical Sciences	Course Doctorate	1	74
	Dissertation Doctorate	0	10
Engineering	Course Doctorate	22	661
	Dissertation Doctorate	0	87
Agricultural Science	Course Doctorate	19	820
	Dissertation Doctorate	4	164
Veterinary Sciences	Course Doctorate	7	612
	Dissertation Doctorate	1	177
Pharmaceutical Science	Course Doctorate	0	30
	Dissertation Doctorate	0	3
Medical Sciences	Course Doctorate	1	24
	Dissertation Doctorate	1	1
Total		93	5,412

Career Paths upon Completion of Doctoral Program



Career Paths of 2022 Graduates (Doctoral Program)

Career Paths

As of May 1, 2023

Graduate School / United Graduate School Classification	Medicine		Engineering	Joint Graduate School of Veterinary Sciences *	United Graduate School of Agricultural Science	United Graduate School of Drug Discovery and Medical Information Sciences	Total
	Doctoral Program	Doctoral Program					
Graduates	2 (1)	34 (9)	21 (3)	7 (2)	19 (4)	3 (1)	86 (20)
Advance to Higher Education							0 (0)
Company Employees	1 (0)	1 (1)	13 (2)	4 (1)	9 (1)	2 (0)	30 (5)
Adult Students (Staying in Workforce)	1 (1)	33 (8)	5 (0)	3 (1)	6 (1)		48 (11)
Clinical Trainees							0 (0)
Others			3 (1)		4 (2)	1 (1)	8 (4)
Total	2 (1)	34 (9)	21 (3)	7 (2)	19 (4)	3 (1)	86 (20)

Employment Status by Industry

Graduate School / United Graduate School Field of Business	Medicine		Engineering	Joint Graduate School of Veterinary Sciences *	United Graduate School of Agricultural Science	United Graduate School of Drug Discovery and Medical Information Sciences	Total
	Doctoral Program	Doctoral Program					
Agriculture and Forestry							0 (0)
Mining, Quarrying, Gravel Collection							0 (0)
Construction			1 (0)				1 (0)
Manufacturing			1 (0)	1 (0)	2 (0)	1 (0)	5 (0)
Utility							0 (0)
Information and Communications							0 (0)
Transport and Postal Services							0 (0)
Wholesale and Retail Business							0 (0)
Finance and Insurance			1 (0)				1 (0)
Real Estate Business							0 (0)
Scientific Research, Professional and Technical Services			2 (0)	1 (1)	2 (0)		5 (1)
Accommodation and Eatery							0 (0)
Life-related Services and Entertainment							0 (0)
School Education		1 (1)	7 (1)	2 (0)	5 (1)		15 (3)
Education Support Business			1 (1)				1 (1)
Medical, Health Care and Welfare						1 (0)	1 (0)
Social Insurance, Social Welfare and Care Services							0 (0)
JA, Post Office, Co-op							0 (0)
Religion, Other Services							0 (0)
State Government Services							0 (0)
Local Government Services							0 (0)
Others							0 (0)
Total	0 (0)	1 (1)	13 (2)	4 (1)	9 (1)	2 (0)	29 (5)

() indicates the number of female students. * including United Graduate School of Veterinary Sciences

■ Student Support Facility

Welfare Facilities

University Hall

Dining Hall	Store	Extracurricular Activity Room	Student Service
Dining Hall No.1 (452 seats) Vending Machines Lounge Repos (Deep-Fried Chicken Rice Bowl Shop) (70 seats)	Co-op, Bookstore ATM	Hall Music Room Meeting Room 1 to 4 Meeting Room 6 Meeting Room 9 to 12 (Meeting Room 9 and 11 are Japanese Rooms.)	Career and Student Support Center Campus Community Consultation (for Students with Disabilities) Chamomile Cafe (Gender Equality Promotion Office)

Dining Hall No.2

School of Medicine Education and Supporting Services Building

Dining Hall	Dining Hall	Store
Dining Hall (507 seats) Convenience Store "PECO"	Dining Hall in Medical Building (156 seats)	Co-op, Bookstore

Student Dormitory

Name	Kurono Student Dormitory (1-1 Yanagido, Gifu City)
Number of Rooms	200 (male) 75 (female)



Kurono Student Dormitory

Sports Facilities / Facilities for Extracurricular Activities

Indoor Sports Facility		Outdoor Sports Facility		Facility for Extracurricular Activities	
Facility	Descriptions	Facility	Descriptions	Facility	Descriptions
Gymnasium	Gymnasium, Second Gymnasium Changing Room (Locker, Shower), Gymnastic Equipment Storage Room, Fitness Room	Athletic Field	400 meters x 8 courses	Common Facility for Sports Club	10 Common Rooms (2 clubs per room), 1 Meeting Room
Japanese Martial Arts Gymnasium	Kendo Training Hall, Judo Training Hall	Ballpark		Common Facility for Culture, Arts and Science Club	10 Common Rooms (1 Japanese Room) (2 to 4 clubs per room)
Kyudo Training Hall		Tennis Courts	12 courts (6 grass courts, 6 all-weather type courts)	Multipurpose Accommodation Facility	4 Training Rooms / Sleeping Quarters, Bathroom, Dining Room
		Volleyball Courts	4 courts (all-weather type courts)	Motor Garage	
		Handball Courts	2 courts (1 clay court, 1 all-weather type court)	Glider Hangar	
		Basketball Courts	3 courts (all-weather type courts)	Stable / Equestrian Ground	
		Soccer Field	1 Soccer Ground	Archery Field	
		Rugby Field	1 Rugby Ground		
		Swimming Pool	1 Swimming Pool (50 meters x 8 courses)		

■ Student Club Activity

Gifu University Student Clubs / Circles

As of May 1, 2023

Organizing Committee (3)

- ◆ Gifu University Festival Committee
- ◆ Gifu University Spring Festival Committee
- ◆ Gifu University Career Fair Committee

Culture, Arts and Science Clubs (33)

- ◆ Hiromu (Acoustic Guitar Circle)
- ◆ Tea Ceremony
- ◆ Performing Arts
- ◆ Dream Box (Student Humane Society)
- ◆ Students Volunteer Safety and Fire Corps
- ◆ Radi Sta (Broadcasting)
- ◆ G-amet
- ◆ Orchestra
- ◆ Guitar & Mandolin
- ◆ Competitive Karuta (Japanese Card Game)
- ◆ Popular Music
- ◆ Chorus
- ◆ GI
- ◆ Coroppo (Puppet Play for Children)
- ◆ Jugggrass(Juggling Circle)
- ◆ Photography
- ◆ Brass Band
- ◆ Biological Science
- ◆ Cat Circle
- ◆ Tsukinowaguma (Asiatic Black Bear) Study
- ◆ Table Game Circle
- ◆ Zoo Club
- ◆ Art
- ◆ Student Folk Song Music Band
- ◆ Writing Fairy Tales
- ◆ Japanese Music
- ◆ Star Watching
- ◆ Manga
- ◆ UNESCO
- ◆ Rakugo Comic Storytelling
- ◆ Ryugaku Love (International Exchange)
- ◆ Three trees (Greening)
- ◆ Robocon (Robot Contest)

Sports Clubs (34)

- ◆ Aikido
- ◆ American Football
- ◆ Iaido (Art of Weaponless Self-defense)
- ◆ Karate
- ◆ Kyudo (Japanese Archery)
- ◆ Kendo (Swordsmanship)
- ◆ Glider
- ◆ Tennis
- ◆ Baseball (Hardball)
- ◆ Soccer
- ◆ Mountain Climbing
- ◆ Automobile
- ◆ Judo
- ◆ Baseball (Semi-Hardball)
- ◆ Shorinji Kempo Martial Arts
- ◆ Swimming
- ◆ MEC Stars (Street Dance)
- ◆ Soft Tennis
- ◆ Gymnastics
- ◆ Table Tennis
- ◆ Stars (Cheerleading)
- ◆ Tae Kwon Do
- ◆ Equestrian
- ◆ Basketball
- ◆ Badminton
- ◆ Volleyball
- ◆ Handball
- ◆ Formula Racing
- ◆ Canoe
- ◆ Yosakoi Dance Circle
- ◆ Lacrosse
- ◆ Rugby
- ◆ Track & Field
- ◆ Wander Vogel

Sports Clubs for Medical Students (19)

- ◆ Swimming
- ◆ Basketball
- ◆ Tennis
- ◆ Soccer
- ◆ Track & Field
- ◆ Skiing
- ◆ Boat
- ◆ Handball
- ◆ Mountain Climbing
- ◆ Baseball (Semi-Hardball)
- ◆ Soft Tennis
- ◆ Golf
- ◆ Rugby
- ◆ Equestrian
- ◆ Badminton
- ◆ Kyudo (Japanese Archery)
- ◆ Kendo (Swordsmanship)
- ◆ Volleyball
- ◆ Table Tennis

Culture, Arts and Science Clubs for Medical Students (13)

- ◆ GEMs (Gifu Emergency Medical Study)
- ◆ Okuhotaka Medical Club
- ◆ Gifu Medical Care
- ◆ Koto Music
- ◆ Go (Japanese Board Game)
- ◆ Liebe Parze (Jazz)
- ◆ Art
- ◆ Castanuela (Band)
- ◆ Kirin no Kai (Study Group of Clinical Skill)
- ◆ GIFMSA (Gifu International Federation of Medical Students' Association)
- ◆ Piano
- ◆ Chamber Orchestra
- ◆ Outdoor

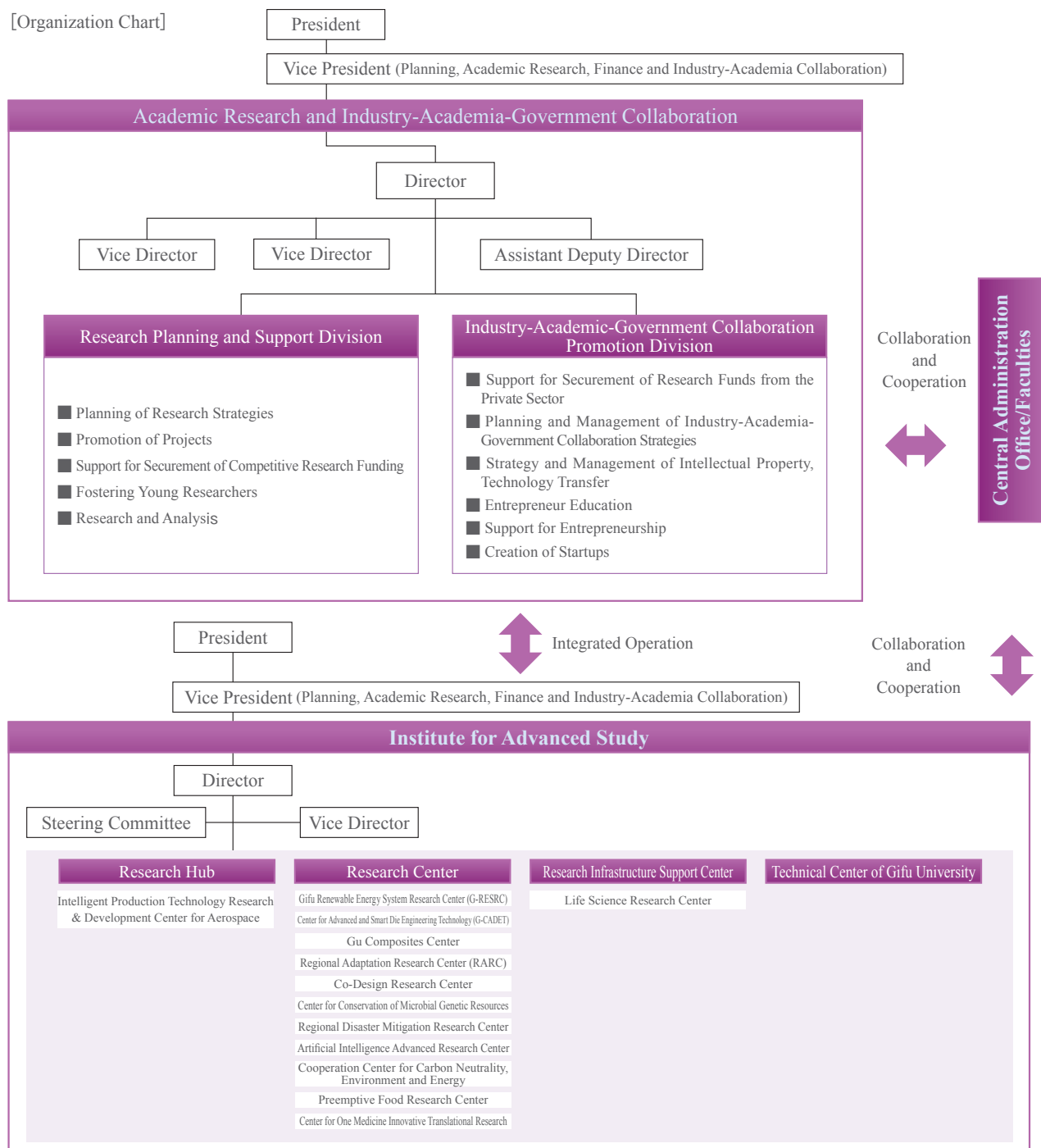
Besides the listed above, there are 44 other clubs.

“Explore” as a keyword

Research

■ Academic Research and Industry-Academia-Government Collaboration ■ Institute for Advanced Study

[Organization Chart]



Research Initiatives

Core Educational and Research Directives Tokai National Higher Education and Research System

Institute for Glyco-core Research (iGCORE)

The Institute for Glyco-core Research is the world's first comprehensive glycans research base devoted to research collaboration and information sharing among world-class glycan chemistry and imaging scholars from Gifu University and researchers specializing in glycobiology and medicine at Nagoya University. Members are aiming to make strides in the field of life sciences based on the biology of nucleic acids and proteins and embark on comprehensive research on glycans, which are often referred to as the "third key to understanding life." Bolstered by this breakthrough technology, members continue to engage in basic research projects to spark medical revolution, focusing especially on the creation of individualized disease prevention and detection of pre-symptomatic illnesses, and demonstrate global leadership through cross-sectional collaboration and research strategies.

Center for Research, Education, and Development for Healthcare Life Design (C-REX)

The Center for Research, Education, and Development for Healthcare Life Design (C-REX) aspires to build up a dynamic and robust health and medical data infrastructure, and provides comprehensive research education with three different concepts of "life (existence, livelihood, and goal in life)" as the focus for addressing socioeconomic issues and contributing to society.

Aerospace Research and Education Hub (AREH)

To adapt to ever-evolving aerospace technologies and to address societal needs, the Aerospace Research and Education Hub implements robust interdisciplinary activities and forges strong partnerships among industry, government and academia. Under these mandates, AREH promotes research and development, fosters human resources to enhance its global competitiveness in the space industry.

Low Temperature Plasma Comprehensive Research Center

Low-temperature plasma sciences generate a new set of values through the sustainable advancement of basic sciences and lead world-class research projects that may directly transform or revolutionize our lives. Researchers are also working toward the standardization and continued development of low-temperature plasma technologies, reinforcing the management functions of research institutions and private enterprises in Japan and abroad, and formulating a low-temperature science digital laboratory system.

Center for One Medicine Innovative Translational Research (COMIT)

The Center for One Medicine Innovative Translational Research (COMIT) promotes drug discovery research based on the concept of One Medicine to radically improve the success rate of drug development and cultivates a new academic field Sharing Medicine.

The perspective of researching human and animal diseases in tandem, One Medicine, can rejuvenate development of drug discovery seeds based on structural biology, cell/regenerative medicine, and informatics by generating disease model animals based on comparative medicine and employing researchers in medicine, veterinary medicine, pharmacology, and engineering who collaborate across fields and facilities in Japan and overseas to develop promising drug discovery seeds. There is an urgent need to create a system that facilitates advanced selection of drug seeds and accelerates preclinical and clinical trials.

Research Institute

Institute for Glyco-core Research (iGCORE) (Established in January, 2021)

As Japan's foremost and largest integrative glycoscience research institute, the Institute for Glyco-core Research (iGCORE) was jointly established with Nagoya University in January 2021. By accelerating interdisciplinary research on glycans, a group of eminent researchers in glycoscience (the integration of chemistry, biochemistry, biophysics, analytical chemistry, and mathematical science) is seeking to comprehend the true nature of biological processes. iGCORE aspires to unravel the "core," of the essence of life by engaging multiscale research projects ranging from the level of molecules to individual organisms. The "Human Glycome Atlas Project (HGA)" which is jointly implemented with the National Institutes of Natural Sciences and Soka University, has been strongly promoted since 2023 as the first MEXT-approved "Projects to Promote Large Scientific Frontiers" in the field of life sciences. In 2022, MEXT designated J-GlycoNet, wherein iGCORE serves as the host institute, as a Joint Usage/Research Center for facilitation of interdisciplinary research at home and abroad.

Research Hub

Intelligent Production Technology Research & Development Center for Aerospace (Established in April 2019)

The Intelligent Production Technology Research & Development Center for Aerospace promotes "Human resource development and research project on production technology aiming to form Japan's aerospace industry cluster" and carries out innovative research and development projects for the advancement of production system architect and cutting-edge production technologies.

Research Center

Gifu Renewable Energy System Research Center (G-RESRC) (Established in April, 2018)

With the latest technologies to "create," "store," "transport," and "use" CO₂-emission free energy from renewable energy as a strong base, the Gifu Renewable Energy System Research Center introduces the "Local Production for Local Consumption Energy Systems (Regional Revitalization Model)" for practical applications in society in a collaborative effort involving industries, government, and academia. For the realization of the "Regional Revitalization Model," the Center seeks breakthroughs of individual innovations posed by efficient renewable energy use, carbon recycling, establishment of virtual grid energy system with EVs, and an autonomous decentralized energy management system to build carbon neutral energy systems.

[Research Division] Energy Creation Field, Energy Carriers and Storage Field, Innovation Energy Venture Creation Field, Energy System Integration Field 55 people in total

Center for Advanced and Smart Die Engineering Technology (G-CADET) (Established in April, 2018)

The Center for Advanced and Smart Die Engineering Technology is working to enhance the international competitive edge of Japanese manufacturing businesses in a range of industries by 1) further reinforcing Gifu University's already formidable research strengths in the fields of product engineering and manufacturing via AI and IoT, 2) the development of production technologies and highly-reliable design techniques as exemplified by, for example, smart die processing, 3) the development of 3D additive manufacturing, and 4) human resource development.

[Research Division] Data Analysis Research Division, Materials Processing Research Division, Design Technology Research Division, Additive Manufacturing Research Division, Human Resource Development Division, Regional Collaboration Division 36 people in total

Gu Composites Center (Established in April, 2018)

As a material engineering and manufacturing research center, Gu Composites Center carries out a great variety of composite material research programs and projects, ranging from molecular aggregates to fiber and resin composites. The Center has established a pioneering, unique research organization that integrates material chemistry, biochemistry, mechanical engineering, and even medicine, to achieve production process of diversified products in small quantities through the concept of "Tailored Materials & Design." It enables the Center to develop lightweight parts for aircraft and automobiles as well as composite materials used in medical applications in the human body. As one of the three major composite material centers in Japan's Tokai-Hokuriku region, the Center actively pursues collaboration with local industry and businesses to aid in their expansion into the world market.

[Research Division] Division of barrier-free materials, Division of composites for human, Division of environmental technology of composites 47 people in total

Cooperation Center for Carbon Neutrality, Environment and Energy (Established in November, 2021)

Prevention of climate change including realization of carbon neutrality may determine the fate of mankind and our community for years to come. In this respect, universities around the world are expected to play a significant role in tackling climate change through collaboration with governments and local communities in the fields of education, research, and social engagement. Tokai National Higher Education and Research System works on climate change by mobilizing the "wisdoms" possessed by Gifu and Nagoya universities, and actively contributes to build a carbon neutral society. Cooperation Center for Carbon Neutrality, Environment and Energy facilitates cooperation between universities and communities and seeks to combat climate change, accelerates smart use of natural resources, and explores possibilities of renewables of the future.

[Group] Zero-emission Campus Group, Regional Zero-emission Group, Innovation Group, Capacity building Group 14 people in total

Preemptive Food Research Center (Established in April, 2022)

Preemptive Food Research Center primarily focuses on extending people's healthy life by researching healthy "meals" that may prevent life-induced diseases, growing number of frail older people, and people with dementia. The Center drafts and implements the "gastronomy manifest" and envisions an "ideal diet" to secure healthy meals for everyone.

[Research Division] Division of Future Food Research, Division of Cohort Studies and Clinical Trials, Division of Preemptive Food Research 14 people in total

Regional Adaptation Research Center (RARC) (Established in February, 2020)

The Regional Adaptation Research Center promotes research and development initiatives to address the urgent needs of measuring growing impacts from global warming on local communities, and the need for people's "adaptation" to rapidly changing socioeconomic dynamics such as depopulation. Such initiatives will be implemented through cross-sectional alliances in the fields of climate, forest, hydrology, rivers, agriculture, ecosystems, and the society. The Center also collaborates with regional stakeholders to collaboratively create new environmental assessment technologies to tackle complex environment agendas, seek solutions, and provide support to local governments, communities, and private enterprises working toward these endeavors. Furthermore, together with the "Gifu Prefecture Center for Climate Change Adaptation (established in April 2020)," the Center engages in joint research activities to meet the government needs, support conservation activities and develop human resources.

[Research Division] Division of Regional Climate Change, Division of Forest Ecosystem and Resources, Division of Water Environments, Division of Agricultural Adaptation, Division of Social Systems, Division of Regional Collaboration, 18 people in total

Co-Design Research Center (Established in April, 2020)

As a community-building thinktank, the Co-Design Research Center's overall mission is the creation of value-added contributions to community where people can enjoy wholesome, fulfilling lives. To this end, the Center's goal is the pursuit of a vibrant and sustainable society through industry-academia-government collaboration and its interdisciplinary approaches. With using design-driven approach that creates experience value and data-driven approaches, we co-create comprehensive planning and policies for example city planning, comprehensive disaster prevention, landscape design, history of urban formation, resource utilization, needs assessment, product development, economic effect measurement, consciousness structure analysis, human resource development and educational effect analysis. And we conduct design research together starting with the extraction of needs aiming to the achievement of objectives and verification of effects.

[Research Division] Human Resources Design Field, Community Design Field, Value Design Field, 15 people in total

Center for Conservation of Microbial Genetic Resources (Established in April, 2016)

As one of the most significant conservation centers for pathogenic microbial organisms in Japan, the Center for Conservation of Microbial Genetic Resources maintains an exhaustive collection of microbial resources, and also acquires valued deposits of microbial strains. In addition to maintaining and storing microbial cultures, we provide microbial cultures and DNA for research and industrial applications. Through our facility, we pursue to meet the needs of society and promote the utilization of beneficial microbial resources for industrial use.

[Assignments] Collection, Preservation and Distribution of Pathogenic Microbial Strains (6; of them, 2 academic staff, 4 support staff)

Regional Disaster Mitigation Research Center (Established in April, 2015)

As a knowledge hub of special expertise and a think tank regarding natural disaster science in Gifu University, the Regional Disaster Mitigation Research Center plays an important role in enhancing regional disaster prevention and mitigation. Its major objectives are to improve disaster preparedness and response, and thereby to meet the regional needs for risk reduction. Specifically, the Center promotes academic and practical research on disaster prevention/mitigation, and proposes new frameworks/schemes to enhance disaster mitigation capabilities and resilience in local communities. In addition, the Center supports policy-making of local governments, provides technological support, and problem-solving assistance for local communities in terms of planning and implementation of disaster prevention/mitigation measures.

[Research Division] Division of Technology Development for Disaster Mitigation, Division of Disaster Medicine, Division of Social Development for Disaster Mitigation, Specially Designated Associate Professor 42 people in total

Artificial Intelligence Advanced Research Center (Established in April, 2019)

The Artificial Intelligence Advanced Research Center aims to promote many promising technologies today such as AI, IoT and data sciences across the campus. As a cross-sectional research liaison office, the center strives to initiate applied research on AI and augment scientific advantages Gifu University currently possesses. The center provides comprehensive AI study sessions and research meetings to the teaching staff and students of every faculty and school in an effort to build an infrastructure enabling researchers to apply AI to their respective academic activities. To meet the needs of local businesses, supporting joint research activities with local industries, becoming a supply base for advanced technology and a source for AI professionals are also among the center's major objectives.

[Division] Education Division, Research Division, Joint Research Promotion Division 52 people in total

Center for One Medicine Innovative Translational Research (COMIT) (Established in January, 2023)

The Center for One-Medicine Innovative Translational Research (COMIT) serves as a platform for researchers to collaborate across fields and facilities in Japan and overseas to develop promising drug discovery seeds for human and animals based on the concept of One Medicine to cultivate a new academic field. To promote One Medicine research, we strive to develop human resources able to support management and expedite the entire research process from identification of drug discovery targets to development and cultivation of drug discovery seeds, non-clinical studies, and clinical trials. We will place these individuals in key domestic universities and research institutes with the goal of accelerating drug discovery research globally.

[Division] Division of Animal Medical Science, Division of Innovative Modality Development, Division of Advanced Medical Device Development, Division of Research Management and Development 77 people in total

Research Infrastructure Support Center

Life Science Research Center (Re-established in April 2018)

Originally established as campus-wide joint education research base in April 2003, the Life Science Research Center (LSRC) was re-established in April 2018 to support educational and dynamic research activities in the field of life sciences. LSRC maintains and furnishes high-end, large-scale research equipment that would otherwise be arduous for individual faculty members to procure and maintain or whose upkeep and management can pose a great burden. Another major mission is to support a research environment under strict compliance with all relevant regulations regarding animal experiments, handling of bacterial pathogens, and use of radioactive isotopes. LSRC provides researchers a safe and access-friendly research environment that reduces their maintenance task and facilitate their research.

[Support Section] Division of Genomics Research, Division of Anaerobe Research, Division of Animal Experiment, Division of Instrumental Analysis, Division of Radioisotope Experiment (30 in total, of them, 11 academic staff, 4 technical staff, 15 support staff)
[Joint Research Course] Division of Anti-Oxidant Research (4) 34 people in total

Technical Center of Gifu University (Established in April, 2020)

The primary goal of the Technical Center of Gifu University is to contribute to the university's academic excellence by providing technical support in education and research, enhancing the skills of technical staff, and implementing the transfer of knowledge and expertise to the next generation. In addition, it collaborates with the Technical Center of Nagoya University within the framework of Tokai National Higher Education and Research System, and promotes MEXT'S Tokai Innovation Core Facility Station program to offer the highest level of environment for education and research.

■ Grants-in-Aid for Scientific Research

Grants-in-Aid for Scientific Research / Multi-Year Fund

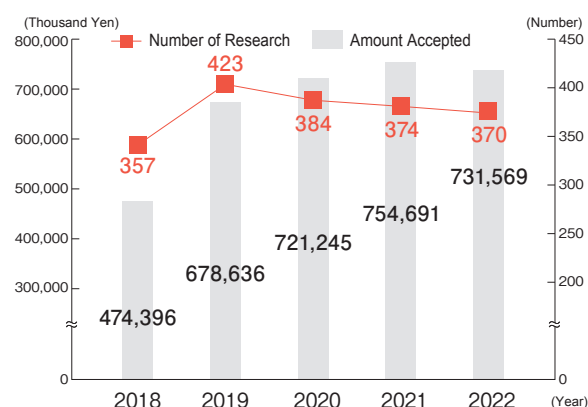
2022

Category	Number of Research	Direct Expenses (in thousand yen)	Indirect Expenses (in thousand yen)	Faculty / Organization																		
				Faculty and Graduate School of Education	Faculty of Regional Studies	School of Medicine	Graduate School of Medicine	University Hospital	Faculty and Graduate School of Engineering	Faculty of Applied Biological Sciences	School of Social System Management	United Graduate School of Agricultural Science	United Graduate School of Veterinary Sciences	United Graduate School of Drug Discovery and Medical Information Sciences	River Basin Research Center	Health Administration Center	Center for Collaborative Study with Community	Organization for Promotion of Higher Education and Student Support	Institute for Advanced Study	Head Office for Information Management	Organization for Promotion of Globalization	Institute for Glyco-core Research
Scientific Research on Innovative Areas	2	5,800	1,740				1			1												
Transformative Research Areas (A)	1	14,700	4,410						1													
Scientific Research (A)	8	84,800	25,440	2						1		1	1	1	1						1	
Scientific Research (B)	53	184,600	55,380	3		2	7		21	13	1				2			2			2	
Scientific Research (C)	224	207,500	62,250	33	7	13	37	24	54	28	5				5	4	4		2		3	5
Challenging Research (Pioneering)	1	5,000	1,500						1													
Challenging Research (Exploratory)	12	24,100	7,230				3		2	5					1						1	
Early-Career Scientists / Young Scientists	67	70,600	21,180	3	3	1	14	17	10	10				3	1	1		2			2	
Research Activity Start-up	4	3,700	1,110		1	1			1				1								1	
Encouragement of Scientists	3	1,360						3														
JSPS Fellows (in Japan)	8	6,700	360						2			6										
JSPS Fellows (abroad)	2	1,700	0							1					1							
Fostering Joint International Research (B)	8	23,900	7,170	1			1		2	2				1	1							
Total	393	634,460	187,770	42	11	17	63	44	94	61	6	7	2	5	12	5	4	0	6	0	3	12

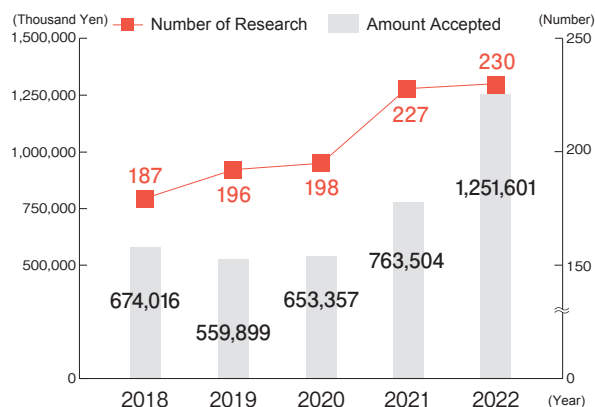
* Provisional grants for 2022

Joint Research / Commissioned Research

Joint Research



Commissioned Research



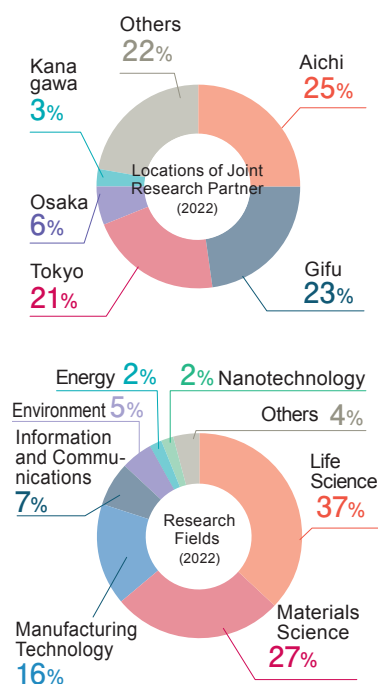
Joint Research / Commissioned Research (Unit: Thousand Yen)

2022

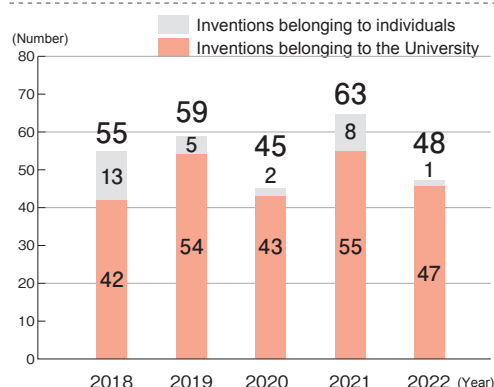
Faculty / Organization	Joint Research		Commissioned Research	
	Number Accepted	Amount Accepted	Number Accepted	Amount Accepted
Faculty of Education	2	1,461	0	0
Faculty of Regional Studies	1	390	0	0
Graduate School of Medicine / School of Medicine	17	121,955	29	200,862
University Hospital	12	5,540	106	96,254
Faculty of Engineering	164	291,492	40	427,600
Faculty of Applied Biological Sciences	92	103,542	23	218,054
School of Social System Management	1	0	0	0
United Graduate School of Veterinary Sciences	0	0	2	4,600
United Graduate School of Agricultural Science	7	5,495	1	0
United Graduate School of Drug Discovery and Medical Information Sciences	7	19,970	1	10,010
Institute for Advanced Study	50	165,355	12	185,847
Intelligent Production Technology Research & Development Center for Aerospace	5	5,409	0	0
Institute for Glyco-core Research	2	0	8	99,355
Center for Collaborative Study with Community	0	0	3	1,149
River Basin Research Center	7	7,416	5	7,870
Academic Research and Industry-Academia-Government Collaboration	1	494	0	0
Information & Communications	2	3,050	0	0
Total	370	731,569	230	1,251,601

In the case of a joint commission with multiple organizations, it counts towards the organization which has the greatest amount of research expenses (It can be zero in other participating organizations).

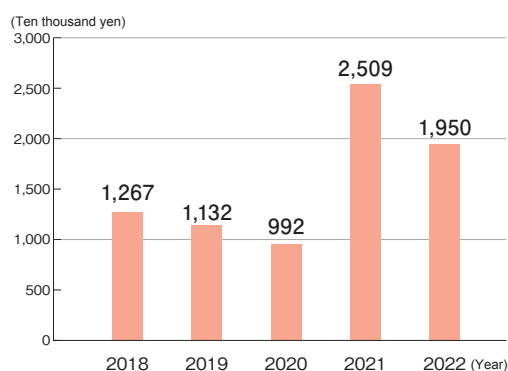
Joint Research



Number of Inventions for Patent



Licensing Fees, etc.



For Society

■ University-Community Collaboration

Agreements with Local Governments

In order to contribute to local community development and the development of human resources, Gifu University actively promotes collaborative activities in a wide range of fields by concluding agreements on collaboration with local governments.

Agreements for Partnership and Cooperation

Local Government/Institution	Date of Agreement	Collaboration Activity *
Ogaki City	March 31, 2006	• Monozukuri Gifu Techno Fair
Kakamigahara City Kakamigahara Chamber of Commerce & Industry	October 10, 2007	• Space Engineering Seminar
Hashima City	February 26, 2008	• Community Leader Practical Training (next-generation community leader fostering program) • Delegation of General Project Promotion Coordinator to Vice Mayor • Delegation of Community Coordinator to City Officials
Gifu Prefecture	March 28, 2008	• Gifu Prefecture and Gifu University Collaboration Promotion Meeting • Industry-Academia-Bank-Government Collaboration Human Resource Development Project • Local Government Collaboration-Type Internship • Delegation of Community Coordinator to Prefectural Officials
Seki City	September 16, 2008	• Summer School (common program for COC+ participating universities)
Mino City	December 17, 2008	• Summer School (common program for COC+ participating universities)
Gifu City	February 27, 2009	• Accepting City Officials for Community Coordinator Training Program
Takayama City	April 17, 2009	• Delegation of Community Coordinator to City Officials
Mitake Town	October 28, 2009	• Cooperation for Low-Carbon Society (by photovoltaic generation, etc.)
Gujo City	March 19, 2012	• Community Leader Practical Training (next-generation community leader foster program) • Summer School (common program for COC+ participating universities) • Delegation of Community Coordinator to City Officials
Minokamo City	September 18, 2015	• Joint Research for Afforestation by Goats
Kitagata Town	November 20, 2015	• Education, Culture and Sports Promotion Projects
Nakatsugawa City	December 15, 2015	• Community Leader Practical Training (next-generation community leader foster program) • Delegation of Community Coordinator to City Officials
Ibigawa Town	January 19, 2016	• Regional Revitalization for Ozu District
Ginan Town	January 29, 2016	• Delegation of Community Coordinator to Town Officials
Motosu City	May 27, 2016	• Human Resources Development Projects
Yamagata City	July 1, 2016	• Promotion of Local Schools Collaboration
Toki City	August 2, 2016	• Community Leader Practical Training (next-generation community leader foster program)
Yoro Town	October 14, 2016	• Drafting Lifelong Learning Basic Plan
Yaotsu Town	December 1, 2016	• Revitalization of Mountainous Rural Areas
Kasamatsu Town	April 17, 2017	• Polyhedron Exhibition at Kasamatsu Museum of History and Future
Gero City	November 24, 2017	• Cooperation for Regional Support for Children with Special Needs
Shirakawa Village	January 22, 2018	• Cooperation for Shirakawago Gakuen School Training
Tajimi City	October 9, 2018	• Revitalization for Nagase Shopping Mall
Kaizu City	March 4, 2019	• Education and Culture Promotion Projects
Mizuho City	December 24, 2019	• Human Resources Development and Regional Revitalization Projects
Hida City	February 28, 2020	• Summer school (common program for COC+participating universities)
Mizunami City	March 10, 2020	• Regional Revitalization Projects
Wanouchi Town	October 22, 2021	• Support and advise for disaster prevention and environmental policies
Ono Town	June 29, 2022	• Discussions for the size of elementary, junior high schools and allocation of teaching staff
Sakahogi Town	October 5, 2022	• Advice, evaluation, instructions for community schools
Sekigahara Town	October 31, 2022	• Promotion of regional medicine by Sekigahara Hospital and others.

* In addition to the activities above, many Gifu University faculty members cooperate with local municipalities as members of advisory bodies, committees and instructors.

Promotion of Collaboration Projects with the Community

Since 2014, as part of its University COC (Center of Community) projects, the university has promoted interdisciplinary cooperation, efforts to reinforce interdisciplinary and inter-department collaboration, and collaborative study with parties such as local governments, NPOs, community organizations, and private companies. The university has also actively promoted efforts to contribute to the solution of local community problems through Local Community-Oriented Education Research Projects.

• Jointly established “Gifu Center for Collaborative Activities between Communities and Schools” with Gifu Prefecture

■ Extension Course / Symposium / Forum

Extension Course

The faculties and centers of Gifu University have opened various extension courses with the aim of contributing to the advancement of education and culture in the region while sharing its achievements in education and research with the community. In the extension courses for students in elementary school, junior and senior high school, Gifu University also provides hands-on workshops for monozukuri (making things, manufacturing). The extension courses available for 2022 are as follows:

- Lifelong Learning Course for Working People 19 courses
- Extension Course/Hands-on Workshop for Students in Elementary School, Junior and Senior High Schools 15 courses

Gifu Symposium

Gifu University has held the Gifu Symposium twice a year since 2001. The aims of the symposium are to introduce the achievements of research at Gifu University, and to provide the latest information about key themes for the 21st century on community and global matters, such as the environment, biotechnology, information, and education as the center of the community.

- In 2022 The 39th Wild Animals in Gifu: Familiar, diverse "neighbors"

Gifu University Forum

Gifu University regularly holds lectures delivered by top researchers who have made great contributions to the development of each academic field.

■ City College Program

Gifu University City College Program

Gifu University implements Gifu University City College Program at the Gifu Chunichi Culture Center. It is a joint program with the Chunichi Shimbun Co., Ltd. Faculty members of Gifu University deliver lectures on themes related to society and life.

■ Senior High School-University Collaboration

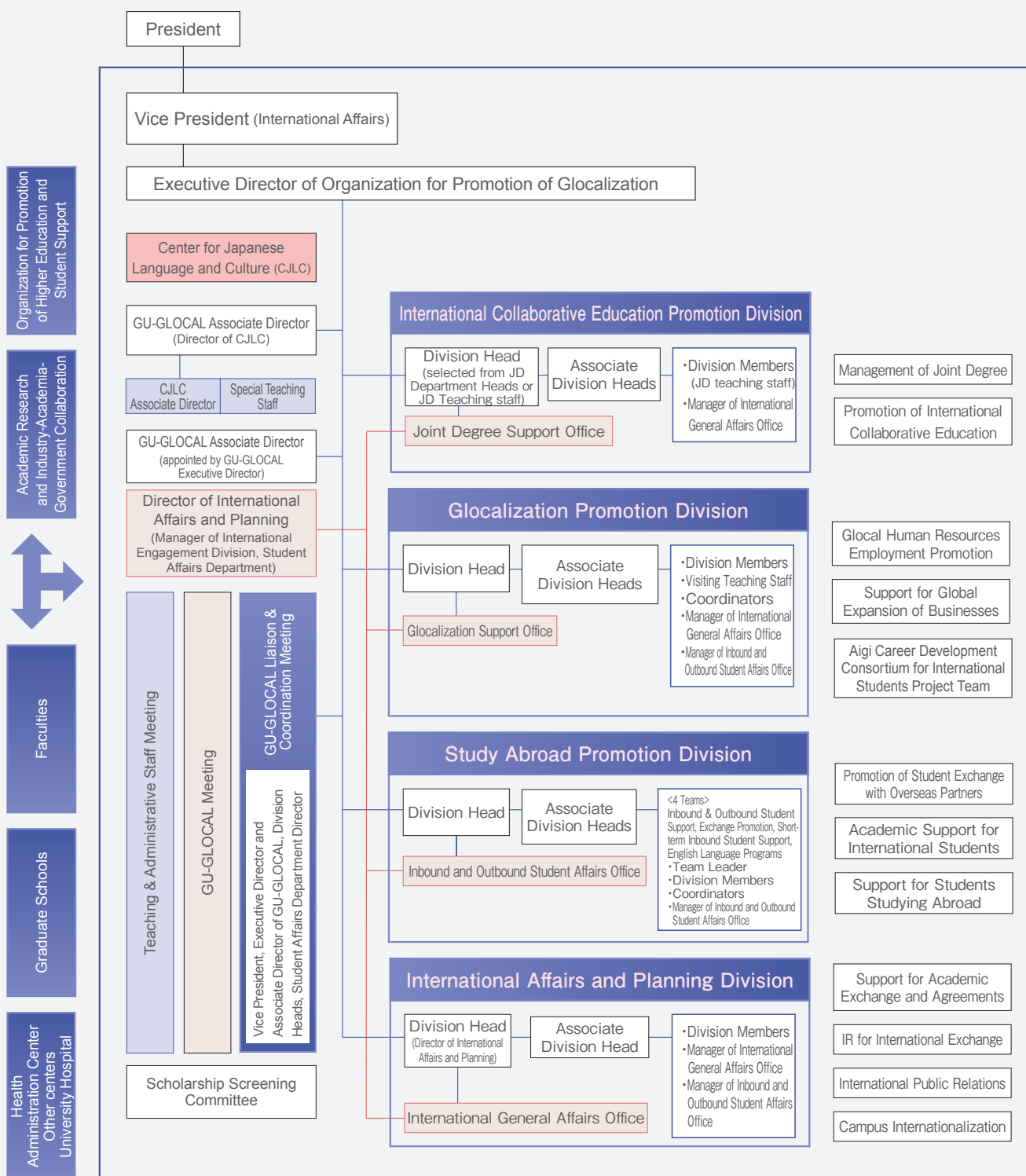
Gifu University collaborates with local senior high schools and encourages senior high school students to develop a deep understanding of a wide range of research fields. Gifu University promotes activities for mutual understanding between senior high schools and Gifu University regarding current education through projects aiming to motivate students to learn, along with the exchange of opinions with senior high school officials.

[Achievements in 2022]

- Visiting Lectures in Senior High Schools 77 courses
(Courses for 2022 are a total of 235 including 29 Humanities Courses, 16 Social Science Courses, 36 Science Courses, 98 Applied Biological Sciences Courses, 37 Medical and Welfare Courses, and 19 Comprehensive Courses.)
- Gifu Network University Consortium (Senior High School-University Collaboration, Information Exchange Meeting)
 - The 1st Seminar for Senior High School-University Collaboration (December 19, 2022)
 - The 2nd Seminar for Senior High School-University Collaboration (March 27, 2023)
- Space Engineering Seminar
Participants: 97 students from 17 senior high schools, technical high schools within Gifu Prefecture
Opening Ceremony: June 26, 2022
A total of 9 seminars + Inspection Tour were held (June 26 - November 16, 2022)
Closing Ceremony: December 17, 2022
- Super High School Session
Participants: 44 students from 16 senior high schools within Gifu Prefecture
1st Group Work (June 19, 2022)
2nd Group Work (July 16, 2022)
3rd Report Session (August 27, 2022)

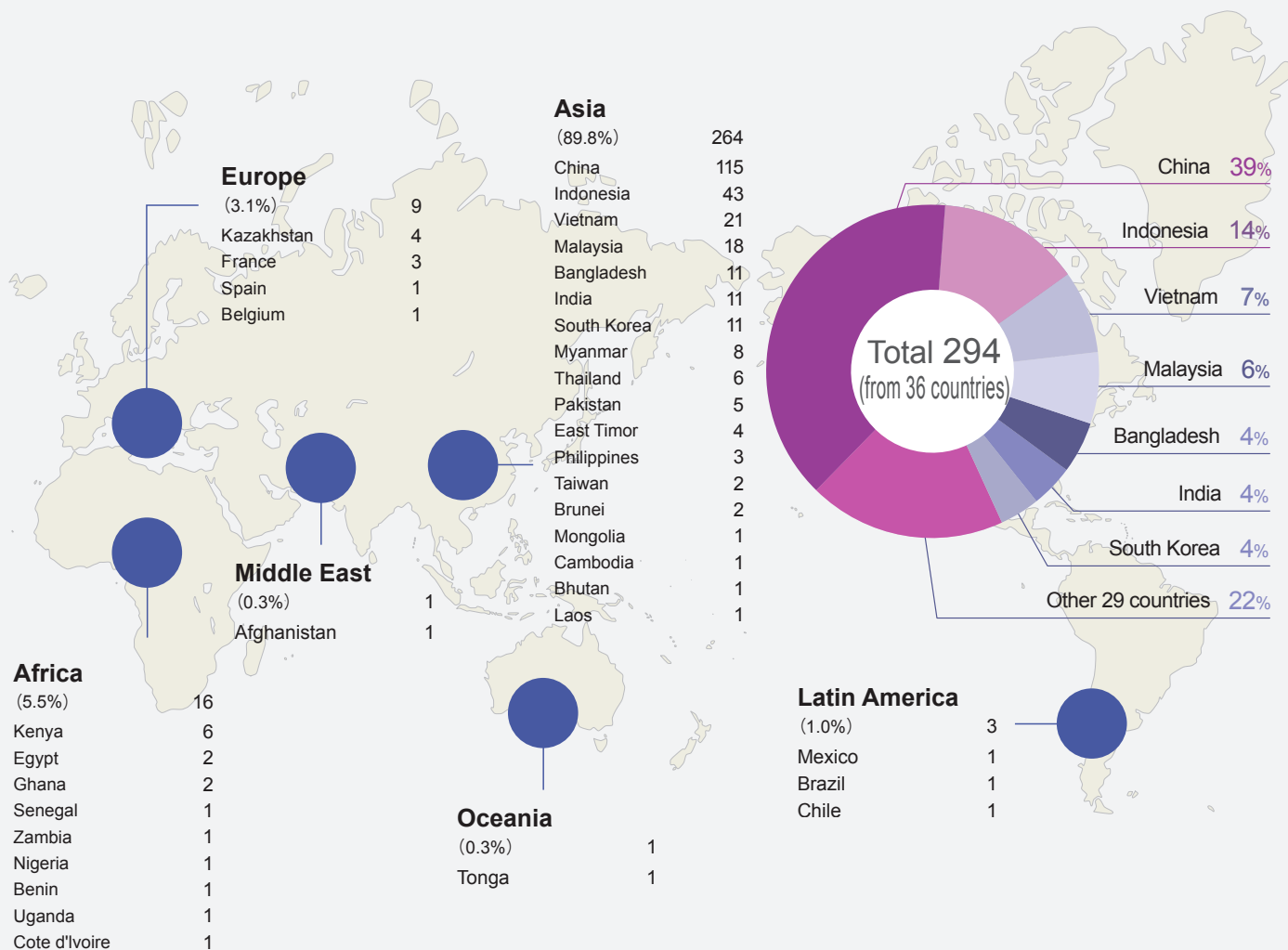
■ Gifu University Organization for Promotion of Glocalization : GU-GLOCAL

[Organization Chart]

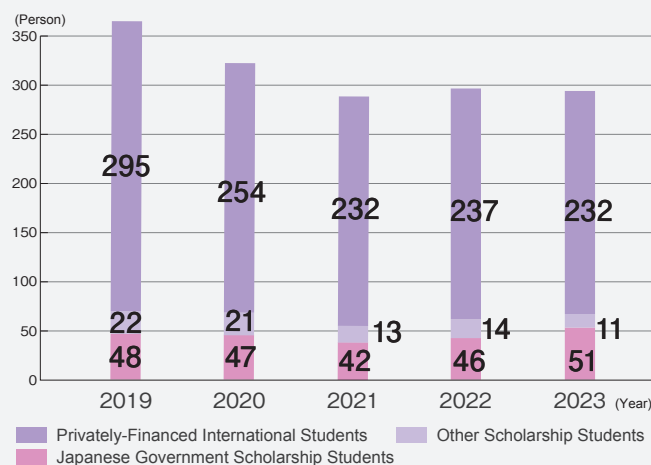


■ Statistical Data on Inbound and Outbound

Number of International Students (As of May 1, 2023)



Number of International Students by Funding Source (As of May 1 in each year)



Exchange Program

(person)

Country	University	Outbound				Inbound			
		2019	2020	2021	2022	2019	2020	2021	2022
China	Guangxi University					3			1
	University of Electronic Science and Technology of China					2	1 (online)		1
	Huaqiao University					2			3
	Jiangnan University					2			
	Jilin University							2 (of them, 1 online)	3
South Korea	Seoul National University of Science and Technology					2			
	Korea University	1		1					
Malaysia	The National University of Malaysia				1				
Australia	University of Technology, Sydney	3			3	2			
Sweden	Lund University	1				1			
Germany	The University of Erfurt	1		2					
Spain	The University of Salamanca					2			1
U.S.A.	Northern Kentucky University	4		2	2	1			
	San Diego State University			1	1				
Canada	Lakehead University				1				
France	University of Lille							3	7
Total		10	0	6	8	17	1	5	16

Summer School Program

(person)

Country	University	Outbound				Inbound			
		2019	2020	2021 (online)	2022	2019	2020	2021 (online)	2022
South Korea	Seoul National University of Science and Technology	1		2					Canceled
	Mokpo National University	1				2			
Australia	Griffith University	6		3	31				
U.S.A.	Northern Kentucky University					3		1	
Canada	University of Alberta	43		22	6				
China	University of Electronic Science and Technology of China					1			
	Guangxi University					2			
Malaysia	The National University of Malaysia					2		4	
Total		51	0	27	37	10	0	5	

* Inbound and outbound summer school programs in 2020 were canceled due to the COVID-19 pandemic.

■ International Academic Exchange

University-Level Exchange 49 Universities in 19 Countries

As of May 1, 2023

University / Government Agency	Country	Concluded
University of Campinas	Brazil	1984. 8.27
San Diego State University	U.S.A.	1985. 5. 7
Zhejiang University	China	1986. 4.21
Guangxi University	China	1986. 4.24
University of Electronic Science and Technology of China	China	1986. 7.21
Jiangnan University	China	1986. 9. 3
Northern Kentucky University	U.S.A.	1990. 9.26
Seoul National University of Science and Technology	South Korea	1992. 3.19
Griffith University	Australia	1995. 3. 3
Utah State University	U.S.A.	1997. 5.29
Hanoi University of Science and Technology	Vietnam	1998. 6.26
Kasetsart University	Thailand	1999. 8. 5
Inner Mongolia Agricultural University	China	2000. 8. 8
University of Technology, Sydney	Australia	2000. 8.14
University of Pannonia	Hungary	2001. 3. 2
Andalas University	Indonesia	2001. 4.23
Bangladesh Agricultural University	Bangladesh	2001. 8.23
The University of Erfurt	Germany	2002.12. 4
Jilin University	China	2003. 5.20
Chiang Mai University	Thailand	2003. 8. 4
University of Dhaka	Bangladesh	2004. 6.17
King Mongkut's University of Technology Thonburi	Thailand	2005. 1.10
Huaqiao University	China	2005. 3.29
Tongji University	China	2006. 3.16
The University of Lampung	Indonesia	2006. 4.25

University / Government Agency	Country	Concluded
Inner Mongolia University	China	2007. 2. 6
The University of Bayreuth	Germany	2008. 8.22
Benha University	Egypt	2009. 3.18
Korea University	South Korea	2010. 1.15
Kaunas University of Technology	Lithuania	2010. 3. 8
IPB University (Bogor Agricultural University)	Indonesia	2010.12. 2
Inner Mongolia Normal University	China	2011. 6. 8
Vytautas Magnus University	Lithuania	2012. 1.19
Gadjah Mada University	Indonesia	2012. 9.13
Sebelas Maret University	Indonesia	2013. 7. 8
Paris-Saclay University	France	2014.12.16
Indian Institute of Technology, Guwahati	India	2014. 9.21
The National University of Malaysia	Malaysia	2016. 9.21
McGill University	Canada	2017. 3. 8
University of Alberta	Canada	2017. 3.21
Lakehead University	Canada	2017.10.11
Mariano Marcos State University	Philippines	2018. 9.10
Hue University	Vietnam	2018.11.12
Assam University	India	2018.11.20
The University of Salamanca	Spain	2018.11.26
University of Lille	France	2020. 4. 2
The University of South Florida	U.S.A.	2020.12.15
Brawijaya University	Indonesia	2021.2.23
Institut Teknologi Bandung	Indonesia	2022.9.26

Faculty-Level Exchange

As of May 1, 2023

Institution	Country	Concluded	Faculty
Faculty of Science, Chulalongkorn University	Thailand	1994. 3 .15	Faculty of Applied Biological Sciences
Faculty of Agriculture, Khon Kaen University	Thailand	2000. 3 .27	Faculty of Applied Biological Sciences
Research and Development Institute, Khon Kaen University	Thailand	2000. 3 .27	Faculty of Applied Biological Sciences
School of Medicine, Zhejiang University	China	2000.12. 4	School of Medicine
Faculty of Medicine, Khon Kaen University	Thailand	2000.12.18	School of Medicine
College of Engineering, Chonnam National University	South Korea	2002. 2 .6	Faculty of Engineering
Institute of Soil and Water Conservation, Chinese Academy of Sciences	China	2008. 8 .12	Center for Infrastructure Asset Management Technology and Research
National Veterinary Research and Quarantine Service, National Veterinary Research Institute	South Korea	2008.11. 4	Faculty of Applied Biological Sciences
Chungbuk National University College of Medicine	South Korea	2009. 4 .17	School of Medicine
Department of Geotechnical Engineering, China Institute of Water Resources and Hydropower Research	China	2009. 7 .24	Center for Infrastructure Asset Management Technology and Research
Faculty of Veterinary Medicine, Kafr El-Sheikh University	Egypt	2009.11.15	United Graduate School of Drug Discovery and Medical Information Sciences
Engineering Division, Yuhan College	South Korea	2010. 9 .29	Faculty of Engineering
Faculty of Mathematics and Natural Sciences, University of Bengkulu	Indonesia	2011. 7 .20	Faculty of Engineering
Shikshan Prasarak Mandal's Sir Parashurambhau College	India	2012. 9 .17	Faculty of Engineering
School of Geography and Geology, National University of Mongolia	Mongolia	2012.10.29	Faculty of Applied Biological Sciences
Faculty of Sciences, Chulalongkorn University	Thailand	2012.12. 6	United Graduate School of Agricultural Science
College of Engineering, Chungnam National University	South Korea	2013. 1 .18	Faculty of Engineering
School of Engineering, Carlos III University of Madrid	Spain	2013. 7 .9	Faculty of Engineering
Pole EMC2, IRT Jules Verne	France	2014. 3 .13	Composite Materials Center
Faculty of Mechanical Engineering, Technische Universität Dortmund	Germany	2014. 6 .23	Faculty of Engineering
Science Departments, University of Mandalay	Myanmar	2014. 8 .25	Faculty of Engineering
Science Departments, Yadanabon University	Myanmar	2014.12.16	Faculty of Engineering
Science Departments, Meiktila University	Myanmar	2014.12.16	Faculty of Engineering
School of Engineering, Dedan Kimathi University of Technology	Kenya	2014.12.16	Faculty of Engineering
Faculty of Engineering and Science, Universiti Tunku Abdul Rahman	Malaysia	2014.12.16	Faculty of Engineering
College of Engineering, Kyungpook National University	South Korea	2015. 2 .27	Faculty of Engineering
Faculty of Education, Srinakharinwirot University	Thailand	2015. 3 .17	Faculty of Education
National Heart, Lung and Blood Institute, National Institutes of Health	U.S.A.	2015. 3 .18	Faculty of Engineering
Centre for Solar Energy Hydrogen Research Baden-Württemberg	Germany	2015. 3 .20	Faculty of Engineering
University of Arkansas- Fort Smith	U.S.A.	2015. 6 .8	Faculty of Regional Studies
Thuyloi University	Vietnam	2015. 6 .25	United Graduate School of Agricultural Science
Bung Hatta University	Indonesia	2015. 7 .30	Faculty of Engineering
The College of Basic and Applied Sciences, University of Ghana	Ghana	2015. 8 .20	Faculty of Applied Biological Sciences
The College of Basic and Applied Sciences, University of Ghana	Ghana	2015. 8 .20	United Graduate School of Veterinary Sciences Joint Graduate School of Veterinary Sciences
Faculty of Mathematics and Natural Sciences, State University of Padang	Indonesia	2015. 9 .18	Faculty of Engineering
Karlsruhe University of Education	Germany	2015.10.21	Faculty of Education
Faculty of Environmental and Power Engineering, Cracow University of Technology	Poland	2015.11.30	Faculty of Engineering / River Basin Research Center
Faculty of Science, Chulalongkorn University	Thailand	2015.12. 2	Faculty of Engineering
Shanxi Normal University	China	2015.12. 7	Faculty of Education
John A. Burns School of Medicine, University of Hawai'i	U.S.A.	2016. 8.24	School of Medicine
Faculty of Engineering, Science and Technology, National University of Timor Lorosa'e	East Timor	2016. 8.29	Faculty of Engineering Gifu Renewable Energy System Research Center
USF Health, University of South Florida	U.S.A.	2016.10.20	School of Medicine / Health Administration Center
Faculty of Agriculture, University of Rajshahi	Bangladesh	2016.12.27	Faculty of Applied Biological Sciences
Faculty of Engineering School of Energy and Mechanical Engineering, Nanjing Normal University	China	2017.7.17	Faculty of Engineering
Science Departments, Dagon University	Myanmar	2017.7.21	Faculty of Engineering
UiT-The Arctic University of Norway, Tromsø	Norway	2017.9.27	River Basin Research Center
Faculty of Science, Technology and Environment, The University of the South Pacific	Fiji	2017.12.1	Faculty of Applied Biological Sciences
Faculty of Civil Engineering and Planning, Faculty of Mathematic and Natural Sciences, Islamic University of Indonesia	Indonesia	2018.2.23	Faculty of Engineering
Faculty of Forest Science, National University of Laos	Laos	2018.3.21	United Graduate School of Agricultural Science
Institute of Environmental Sciences, Kazan Federal University	Russia	2018.5.18	Faculty of Applied Biological Sciences
Faculty of Science, Universiti Brunei Darussalam	Brunei	2018.6.15	Faculty of Engineering
Kazan State Medical Academy	Russia	2018.12.10	Faculty of Applied Biological Sciences
Centre for Agricultural Research, Hungarian Academy of Sciences	Hungary	2018.12.10	Faculty of Applied Biological Sciences
Faculty of Engineering, University of Zambia	Zambia	2019.1.30	Faculty of Engineering
Seoul National University College of Medicine	South Korea	2019.4.11	School of Medicine
The University of Chicago Medicine	USA	2019.6.3	School of Medicine
Frontier Mold and Die Research and Development Center, National Kaohsiung University of Science and Technology	Taiwan	2019.12.27	Center for Advanced and Smart Die Engineering Technology
Faculty of Teacher's Training and Education, University of Riau	Indonesia	2020.3.3	Faculty of Engineering
College of Engineering, Chang Gung University	Taiwan	2020.3.18	Faculty of Engineering
Centre of Medical - Pharmaceutical Science & Technology Services, Thai Binh University of Medicine and Pharmacy	Vietnam	2020.3.31	Life Science Research Center
Centre of Medical - Pharmaceutical Science & Technology Services, Thai Binh University of Medicine and Pharmacy	Vietnam	2020.3.31	United Graduate School of Drug Discovery and Medical Information Sciences
College of Liberal Arts, National Central University	Taiwan	2021.1.14	Faculty of Regional Studies
National Electronics and Computer Technology Center	Thailand	2023.1.29	Faculty of Engineering

■ Researchers Inbound / Outbound

Number of Foreign Researchers and Visitors Accepted

2022

Foreign Researchers	9
Foreign Visitors	28

Number of Gifu University Faculty's Overseas Travels

2022

Business Trip	224
Training	5

* excluding part-time staff

■ International House

Name	Room Type		
	Rooms		Others
International House (1-1 Yanagido, Gifu City)	Building A	31 Single Rooms	Conference Rooms, Training Rooms, Lounge
		2 Couple Rooms	
		3 Family Rooms	
	Building B	38 Single Rooms	Multipurpose Room, Japanese Room
		12 Couple Rooms	
		4 Family Rooms	
	Building C	11 Single Rooms	
		2 Couple Rooms	
		4 Family Rooms	

■ Overseas Office

Gifu University has established overseas offices aiming to promote exchange with international students and researchers.

Gifu University Shanghai Office (China)

999-45 Yuquing Road, Shanghai 201315, People's Republic of China

Tel: 86-21-58124777

Fax: 86-21-58124778

Gifu University Dhaka Office (Bangladesh)

University of Dhaka

Ramna, Dhaka 1000, Bangladesh

Gifu University Office in Sebelas Maret University (Indonesia)

Sebelas Maret University

Jalan Ir. Sutami 36 A, Surakarta, 57126, Indonesia

Program Office between Gifu University and Guangxi University (China)

Guangxi University

100 Daxue Road, Nanning, Guangxi, People's Republic of China

■ Board Members

Members of the Board	
President	YOSHIDA Kazuhiro
Vice President (General Manager) (Evaluation, General Affairs, Public Relations and Fund)	SUGIYAMA Makoto
Vice President (Planning, Academic Research, Finance and Industry-Academia Collaboration)	WANG Zhigang
Vice President (Academic Affairs and Student Support)	YAMADA Toshihiro
Vice President (International Affairs, Information and (Deputy in Charge for) Evaluation)	KAMBARA Shinji
Vice President (Diversity, Human Rights and Library)	OYABU Chiho
Director of the University Hospital	AKIYAMA Haruhiko

Members of Education & Research Council	
Chancellor	MATSUO Seichi
Executive Trustee (President of Gifu University)	YOSHIDA Kazuhiro
Vice President (General Manager) (Evaluation, General Affairs, Public Relations and Fund)	SUGIYAMA Makoto
Vice President (Planning, Academic Research, Finance and Industry-Academia Collaboration)	WANG Zhigang
Vice President (Academic Affairs and Student Support)	YAMADA Toshihiro
Vice President (International Affairs, Information and (Deputy in Charge for) Evaluation)	KAMBARA Shinji
Vice President (Diversity, Human Rights and Library)	OYABU Chiho
Dean of the Faculty of Education	YAMADA Masahiro
Dean of the Faculty of Regional Studies	UCHIDA Masaru
Dean of the Faculty of Engineering, Dean of the Graduate School of Natural Science and Technology	UEMATSU Yoshihiko
Dean of the Faculty of Applied Biological Sciences	MITSUNAGA Tohru
Dean of the School of Social System Management	HIGO Mutsuki
Dean of the Graduate School of Medicine	YAMAGUCHI Shun
Dean of the Joint Graduate School of Veterinary Sciences	SHIMIZU Yasutake
Dean of the United Graduate School of Agricultural Science	HIRAMATSU Ken
Dean of the United Graduate School of Veterinary Sciences	ASAI Tetsuo
Dean of the United Graduate School of Drug Discovery and Medical Information Sciences	UEDA Hiroshi
Director of the University Hospital	AKIYAMA Haruhiko
Director of the Institute for Glyco-core Research (iGCORE)	KADOMATSU Kenji
Director of the Center for Collaborative Study with Community	MASUKAWA Koichi
Director of the River Basin Research Center	LI Fusheng
Director of the Health Administration Center	YAMAMOTO Mayumi
Executive Director of the Organization for Promotion of Glocalization	KOYAMA Hiroyuki
Professor of the Faculty of Education	SAKAMOTO Kazuya
Professor of the Faculty of Regional Studies	HASHIMOTO Ekuko
Professor of the School of Medicine	ISEKI Atsuko
Professor of the Faculty of Engineering	KOBAYASHI Koichi
Professor of the Faculty of Applied Biological Sciences	NISHIZU Takahisa
Professor of the School of Social System Management	MITSUI Sakae
Professor of the Graduate School of Medicine	USHIKOSHI Hiroaki
Professor of Organization for Promotion of Higher Education and Student Support	KOKETSU Mamoru
Professor of the Academic Research and Industry-Academia- Government Collaboration	YABE Tomio
Professor of the Organization for Promotion of Glocalization	HASHIMOTO Shingo
Professor of the Faculty of Engineering	Lim Lee Wah
Professor of the Faculty of Applied Biological Sciences	YAMAMOTO Akemi

Deans & Directors		
Faculty of Education	Dean	YAMADA Masahiro
	Associate Dean	MASHIKO Norifumi
	Associate Dean	SUGIMORI Hiroyuki
	Associate Dean	SAKAMOTO Kazuya
	General Manager of the Gifu University Faculty of Education Affiliated Compulsory School System (Elementary-Junior High)	IMAMURA Mitsuyuki
	Principal of the Gifu University Faculty of Education Affiliated Compulsory School System (Elementary-Junior High)	MARUYAMA Sanae
Faculty of Regional Studies	Dean	UCHIDA Masaru
	Associate Dean	HASHIMOTO Ekuko
	Associate Dean	GASSHO Akira
Graduate School of Medicine / School of Medicine	Dean	YAMAGUCHI Shun
	Associate Dean	MAEKAWA Yoichi
	Associate Dean	USHIKOSHI Hiroaki
	Associate Dean	ISEKI Atsuko
University Hospital	Director	AKIYAMA Haruhiko
	Associate Director	DOI Kiyoshi
	Associate Director	SHIMIZU Masahito
	Associate Director	KOIE Takuya
	Associate Director	YABE Daisuke
	Associate Director	FUKAO Ayumi
Faculty of Engineering	Dean	UEMATSU Yoshihiko
	Associate Dean	ITOH Takashi
	Associate Dean	KOBAYASHI Koichi
	Associate Dean	BAN Takayuki
	Director of the Center for Infrastructure Asset Management Technology and Research	SAWADA Kazuhide
	Director of the Applied Meteorological Research Center	YOSHINO Jun
	Director of Center for Applied Research of Plasma	KOUSAKA Hiroyuki
	Director of Center for Space Research and Utilization Promotion	MIYASAKA Takashi
Faculty of Applied Biological Sciences	Dean	MITSUNAGA Tohru
	Associate Dean	UNNO Toshihiro
	Associate Dean	NISHIZU Takahisa
	Associate Dean	YAMADA Kunio
	Director of the Gifu Field Science Center	OHBA Yasunori
	Director of the Animal Medical Center	WATANABE Kazuhiro

School of Social System Management	Dean	HIGO Mutsuki
	Associate Dean	MITSUI Sakae
Graduate School	Dean of the Natural Science and Technology	UEMATSU Yoshihiko
	Dean of the Joint Graduate School of Veterinary Sciences	SHIMIZU Yasutake
	Dean of the United Graduate School of Agricultural Science	HIRAMATSU Ken
	Dean of the United Graduate School of Veterinary Sciences	ASAI Tetsuo
	Dean of the United Graduate School of Drug Discovery & Medical Information Sciences	UEDA Hiroshi
	Director	WANG Zhigang
Institute for Advanced Study	Vice Director	MURAOKA Hiroyuki
	Vice Director	TANAKA Kaori
	Vice Director	NIKAMI Hideki
	Director of the Intelligent Production Technology Research & Development Center for Aerospace	KOMAKI Hirokazu
	Director of the Gifu Renewable Energy System Research Center	UEMIYA Shigeyuki
	Director of the Center for Advanced and Smart Die Engineering Technology	YOSHIDA Yoshinori
	Director of the Gu Composites Center	NAKAI Asami
	Preemptive Food Research Center	YABE Tomio
	Director of the Regional Adaptation Research Center	HARADA Morihiro
	Director of the Co-Design Research Center	MITSUI Sakae
	Director of the Regional Disaster Mitigation Research Center	NOJIMA Nobuoto
	Director of the Center for Conservation of Microbial Genetic Resources	TANAKA Kaori
	Director of the Artificial Intelligence Advanced Research Center	KATO Kunihito
	Director of the Life Science Research Center	NIKAMI Hideki
Institute for Glyco-core Research (iGCORE)	Cooperation Center for Carbon Neutrality, Environment and Energy	MURAOKA Hiroyuki
	Director of Center for One Medicine Innovative Translational Research	YABE Daisuke
Center for Collaborative Study with Community	Director of the Technical Center of Gifu University	WANG Zhigang
River Basin Research Center	Director	KADOMATSU Kenji
Health Administration Center	Director	MASUKAWA Koichi
Collaboration Center for Medical Education Medical Education Development Center	Director	LI Fusheng
Library	Director	YAMAMOTO Mayumi
	Director of the University Library	OYABU Chiho
Organization for Promotion of Higher Education and Student Support	Director of the Medical Library	NAGAOKA Hitoshi
	Director-General	YAMADA Toshihiro
	Vice Director-General	KOKETSU Mamoru
	Vice Director-General	MATSUNAGA Yosuke
Academic Research and Industry-Academia-Government Collaboration	Vice Director-General	YOKOTA Yasunari
	Director	WANG Zhigang
Organization for Promotion of Globalization	Executive Director	KOYAMA Hiroyuki
Information & Communications	Director	KAMBARA Shinji

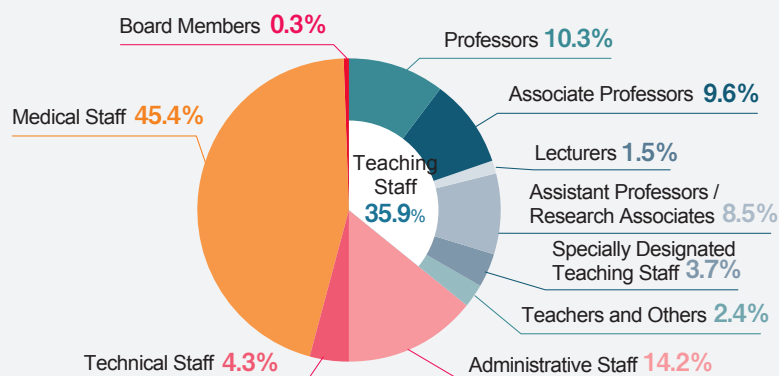
■ Number of Board Members, Teaching and General Staff

As of May 1, 2023

Classification	Board Members	Teaching Staff							General Staff			Total
		Professors	Associate Professors	Lecturers	Assistant Professors	Research Associates	Specially Designated Teaching Staff	Affiliated School Teachers	Administrative Staff	Technical Staff	Medical Staff	
Administration	6 (1)								153 (75)	18 (4)		177 (80)
Faculty of Education		30 (3)	36 (7)		4 (1)				16 (8)			86 (19)
Graduate School of Education		5 (1)	4 (0)				3 (0)					12 (1)
Gifu University Faculty of Education Affiliated Compulsory School System (Elementary - Junior High)								56 (18)				56 (18)
Faculty of Regional Studies		14 (2)	11 (2)	1 (0)	9 (4)				6 (3)			41 (11)
School of Medicine		8 (5)	11 (10)		12 (10)	1 (1)	3 (3)					35 (29)
Graduate School of Medicine		32 (2)	28 (4)	5 (1)	32 (9)		33 (9)		32 (12)	3 (3)		165 (40)
Medical Education Development Center		2 (0)			2 (1)		1 (1)					5 (2)
University Hospital		7 (0)	14 (0)	30 (2)	79 (14)				85 (41)	14 (6)	1,064 (765)	1,293 (828)
Faculty of Engineering		71 (4)	57 (2)		31 (2)		2 (0)		20 (10)			181 (18)
Faculty of Applied Biological Sciences		45 (3)	35 (7)		13 (6)		4 (0)		22 (7)	37 (27)		156 (50)
School of Social System Management		7 (1)	5 (1)		1 (1)		3 (0)					16 (3)
United Graduate School of Agricultural Science		1 (0)										1 (0)
United Graduate School of Veterinary Sciences		1 (0)										1 (0)
United Graduate School of Drug Discovery and Medical Information Sciences			2 (1)				3 (0)					5 (1)
Organization for Promotion of Higher Education and Student Support			5 (1)				9 (3)					14 (4)
Academic Research and Industry-Academia-Government Collaboration							3 (1)					3 (1)
Institute for Advanced Study		1 (0)	5 (0)				18 (2)			29 (2)		53 (4)
Institute for Glyco-core Research		7 (1)	2 (0)		6 (2)		3 (0)					18 (3)
Organization for Promotion of Glocalization		3 (2)			2 (1)							5 (3)
River Basin Research Center		4 (0)	7 (3)		2 (1)							13 (4)
Health Administration Center		2 (1)	1 (0)		1 (1)		2 (2)				4 (4)	10 (8)
Center for Collaborative Study with Community		1 (0)	2 (1)		3 (1)							6 (2)
Information & Communications		2 (0)										2 (0)
Gender Equality Promotion Office					1 (1)							1 (1)
Total	6 (1)	243 (25)	225 (39)	36 (3)	198 (55)	1 (1)	87 (21)	56 (18)	334 (156)	101 (42)	1,068 (769)	2,355 (1,130)

() indicates the number of women and is included in the total. The number of Specially Designated Teaching Staff shown in the table represents the full-time positions only.

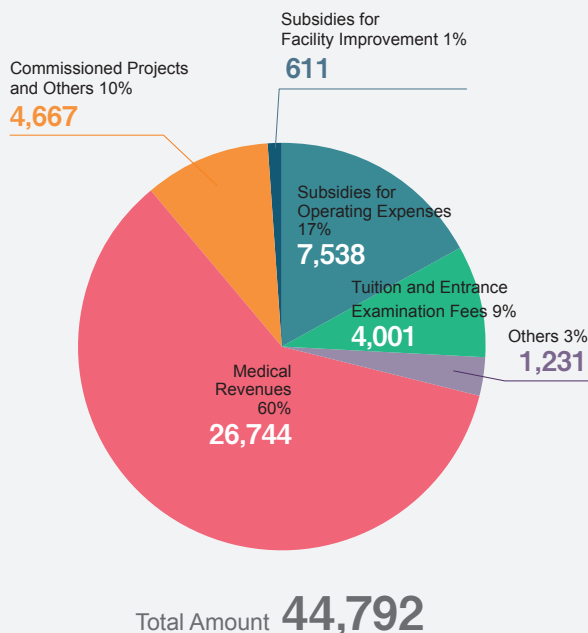
Component Ratio of Teaching and General Staff



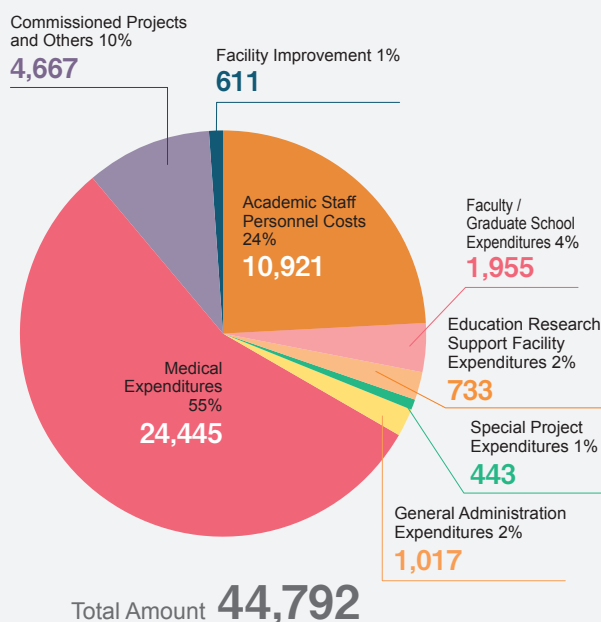
Budget

Gifu University Budget for 2023 (Unit: Million Yen)

[Revenues]



[Expenditures]



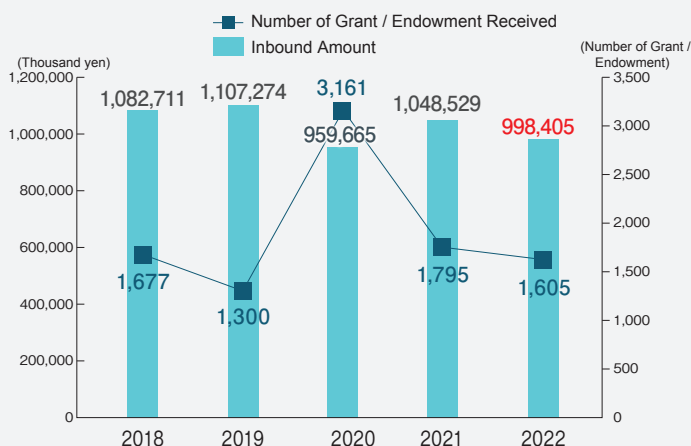
Endowment

2022 Grant and Endowment (Unit: Thousand Yen)

Classification	Number of Grant / Endowment Received	Amount
Gifu University Fund	803	51,515
Central Administration Office	1	131
Faculty of Education	26	20,636
Gifu University Faculty of Education Affiliated Compulsory School System (Elementary - Junior High)	3	24,060
Faculty of Regional Studies	16	1,991
School of Medicine	281	544,458
University Hospital	94	56,201
Faculty of Engineering	155	114,022
Faculty of Applied Biological Sciences	151	73,094
School of Social System Management	3	1,306
United Graduate School of Drug Discovery and Medical Information Sciences	8	36,600
Institute for Advanced Study	26	55,555
Institute for Glyco-core Research	4	2,815
Center for Collaborative Study with Community	2	340
River Basin Research Center	9	4,948
University Library	11	1,042
Organization for Promotion of Higher Education and Student Support	1	700
Information & Communications	1	300
Intelligent Production Technology Research & Development Center for Aerospace	8	6,491
Graduate School of Natural Science and Technology	1	1,500
United Graduate School of Agricultural Science	1	700
Total	1,605	998,405

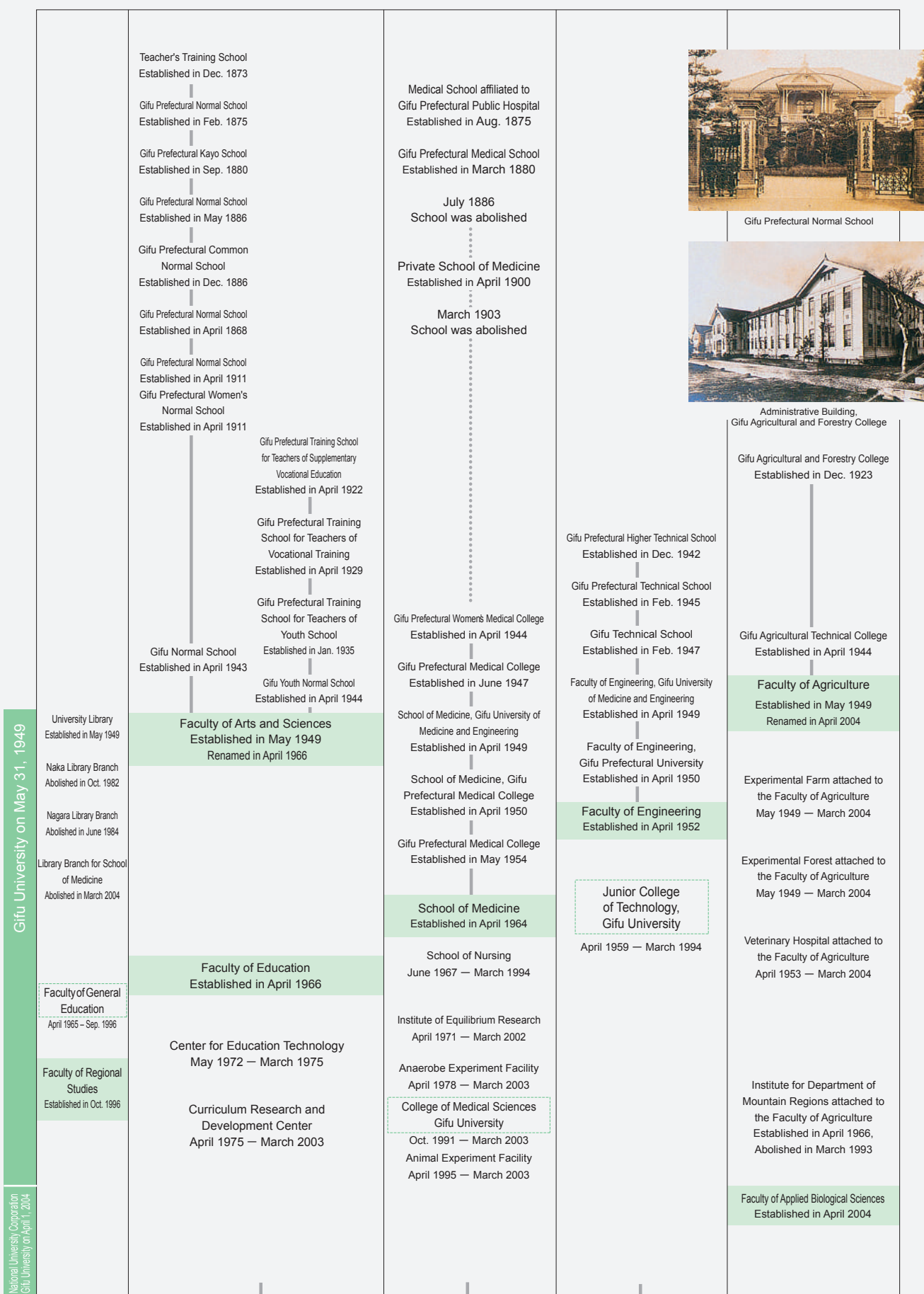
Fractions smaller than a thousand yen rounded down. It includes 347 million for the Departments of Integral Medicine in the School of Medicine ¥23 million for the endowed research division in the Graduate School of Drug Discovery and Medical Information Science.

* The expenses do not always coincide with the actual amount because fractions smaller than a thousand yen is rounded down.



The increase in the number of grants in 2020 can be attributed to the university's requests for financial contributions toward the Student Support Programs to Combat COVID-19.

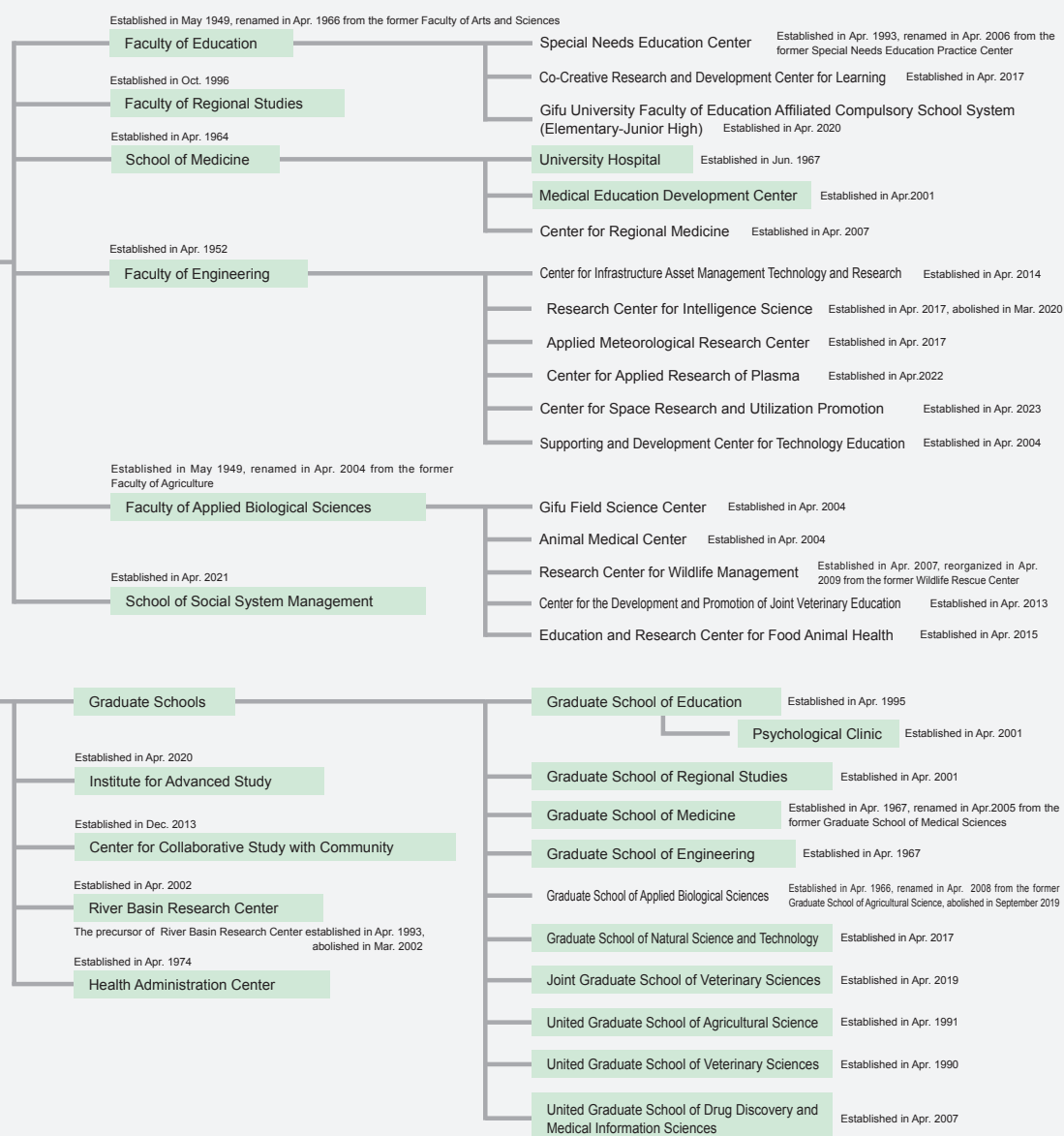
History



Presidents Past and Present

1 st President	AOKI Bunichiro	May 31, 1949	—	July 1, 1954
Acting President	TAKAHASHI Teizo	July 1, 1954	—	May 31, 1955
2 nd President	YOSHII Yoshiji	June 1, 1955	—	May 31, 1961
3 rd President	SHIKATA Hiroshi	June 1, 1961	—	May 31, 1967
4 th President	IMANISHI Kinji	June 1, 1967	—	May 31, 1973
5 th President	HAYASHI Kaneo	June 1, 1973	—	May 31, 1977
6 th President	TACHI Masatomo	June 1, 1977	—	May 31, 1983
7 th President	HAYANO Saburo	June 1, 1983	—	May 31, 1989
8 th President	KATO Akira	June 1, 1989	—	May 31, 1995
9 th President	KINJO Toshio	June 1, 1995	—	May 31, 2001
10 th President	KUROKI Toshio	June 1, 2001	—	March 31, 2008
11 th President	MORI Hideki	April 1, 2008	—	March 31, 2014
12 th President	MORIWAKI Hisataka	April 1, 2014	—	March 31, 2022
13 th President	YOSHIDA Kazuhiro	April 1, 2022	—	Present

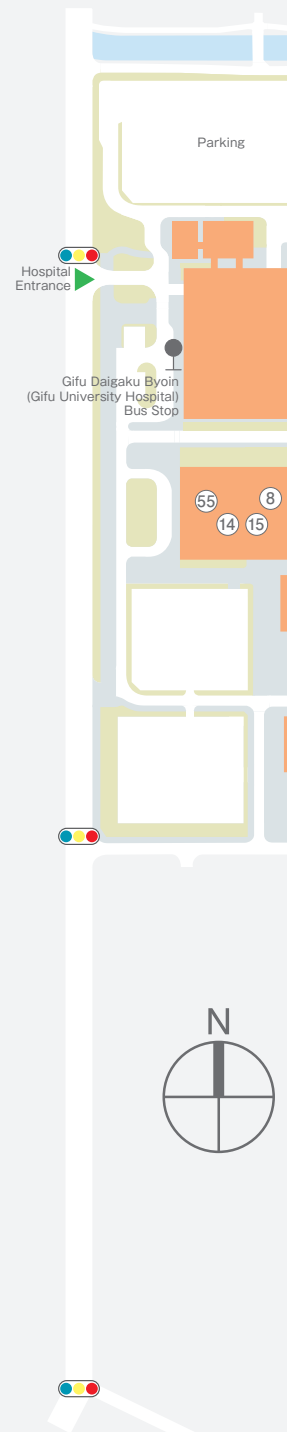
Reestablished as Tokai National Higher Education and Research System Gifu University on April 1, 2020



Campus Map

As of May 1, 2023

- | | | | |
|----|---|----|--|
| 1 | Central Administration Office | 53 | River Basin Research Center |
| 2 | Faculty of Education | 54 | Life Science Research Center (Division of Genomics Research) |
| 3 | Art and Technology Education Building | 55 | Life Science Research Center (Division of Anaerobe Research) |
| 4 | Music Building | 56 | Life Science Research Center (Division of Animal Experiment) |
| 5 | Health and Physical Education Building | 57 | Life Science Research Center (Division of Instrumental Analysis) |
| 6 | Special Support Education Center | 58 | Life Science Research Center (Division of Radioisotope Experiment) |
| 7 | Faculty of Regional Studies | 59 | Gifu Prefectural Research Institute for Food Sciences (3F Gifu University Industry-Government-Academia Collaboration Area) |
| 8 | Graduate School of Medicine / School of Medicine | 60 | Museum of Infrastructure |
| 9 | Life Science Building | 61 | Information & Communications (Information Management Core) |
| 10 | Education and Supporting Services Building | 62 | Organization for Promotion of Glocalization (GU-GLOCAL) |
| 11 | Memorial Hall | 63 | Center for Japanese Language and Culture |
| 12 | Medical Library | 64 | Co-creative Research and Development Center for Learning |
| 13 | School of Medicine (Nursing Course) | 65 | Center for Collaborative Study with Community |
| 14 | Medical Education Development Center | 66 | Health Administration Center |
| 15 | Center for Regional Medicine | 67 | University Hall |
| 16 | University Hospital | 68 | International House |
| 17 | Faculty of Engineering | 69 | Yanagido Hall |
| 18 | Mechanics Building No.1 | 70 | Kurono Student Dormitory |
| 19 | Mechanics Building No.2 | 71 | Hohoemi (nursery) |
| 20 | Mechanics Building No.3 | 72 | Auditorium |
| 21 | Chemistry Building | 73 | Gymnasium |
| 22 | Disaster Prevention Engineering Building | 74 | Japanese Martial Arts Gymnasium |
| 23 | Civil Engineering Experiments Building | 75 | Second Gymnasium |
| 24 | High Voltage Experiments Building | 76 | Dining Hall No.2 |
| 25 | Mechanics Workshop Facilities | 77 | Gifu Pharmaceutical University Building |
| 26 | Supporting and Development Center for Technology Education | 78 | Gifu Foundation for Research Promotion of Healthy Aging and Drug Discovery (7th Fl.) |
| 27 | Center for Infrastructure Asset Management Technology and Research | 79 | United Graduate School of Drug Discovery and Medical Information Sciences (8th Fl.) |
| 28 | Faculty of Applied Biological Sciences | 80 | Gifu Disaster Mitigation Center |
| 29 | Administrative Building, Gifu Field Science Center | 81 | Athletic Field |
| 30 | Gifu Field Science Center | 82 | Ballpark |
| 31 | Animal Medical Center | 83 | Soccer Field |
| 32 | Research Center for Wildlife Management | 84 | Rugby Field |
| 33 | Center for the Development and Promotion of Joint Veterinary Education | 85 | Tennis Court |
| 34 | Education and Research Center for Food Animal Health | 86 | Basketball Court |
| 35 | School of Social System Management | 87 | Volleyball Court |
| 36 | United Graduate School of Agricultural Science | 88 | Handball Court |
| 37 | United Graduate School of Veterinary Sciences | 89 | Swimming Pool |
| 38 | Institute for Glyco-core Research (iGCORE) | 90 | Kyudo Archery Field |
| 39 | University Library | 91 | Archery Ground |
| 40 | General Research Building I | 92 | Equestrian Ground |
| 41 | General Research Building II | 93 | Convenience Store |
| 42 | Organization for Promotion of Higher Education and Student Support | | |
| 43 | General Education Building | | |
| 44 | Academic Research and Industry-Academia-Government Collaboration | | |
| 45 | Institute for Advanced Study | | |
| 46 | Gifu Renewable Energy System Research Center | | |
| 47 | Center for Advanced and Smart Die Engineering Technology (G-CADET) | | |
| 48 | Gu Composites Center | | |
| 49 | Regional Disaster Mitigation Research Center | | |
| 50 | Center for Conservation of Microbial Genetic Resources | | |
| 51 | Innovation Hub for Smart Mold Processing | | |
| 52 | Intelligent Production Technology Research & Development Center for Aerospace | | |





■ Area of Campus and Affiliated Facility

As of May 1, 2023

Location	Faculty and Facility	Area (m ²)	Floor Area (m ²)
Yanagido Campus	Central Administration Building	520,827	4,000
	Faculty of Education		18,686
	Faculty of Regional Studies		3,680
	Faculty of Regional Studies / General Education Building		13,433
	School of Medicine (Nursing Course)		7,197
	Faculty of Engineering		48,832
	Faculty of Applied Biological Sciences		27,529
	United Graduate School of Agricultural Science / United Graduate School of Veterinary Sciences		2,301
	Animal Medical Center		3,697
	Institute for Glyco-core Research (iGCORE)		4,324
	University Library (including Auditorium)		8,853
	Academic Research and Industry-Academia-Government Collaboration		9,352
	River Basin Research Center		1,112
	Information Management Core		2,311
	Center for Collaborative Study with Community		336
	International House		4,285
	University Hall, Dining Hall No.2, Yanagido Hall		6,465
	Facility for Sports and Extracurricular Activities		6,416
	Kurono Student Dormitory		5,045
	Nursery		618
	Drainage Treatment Facility, Central Machine Room, Relay Pump Room, Outdoor Extra High Tension Power Room		1,847
	General Research Building II		5,880
	Gifu Central Livestock Hygiene Service Center		(819)
	Gifu Prefectural Research Institute for Food Sciences		(826)
	School of Medicine / University Hospital	124,336	119,296
	United Graduate School of Drug Discovery and Medical Information Sciences, Gifu Foundation for Research Promotion of Healthy Aging and Drug Discovery (7th and 8th Fl. of Gifu Pharmaceutical University Building)		(1,305)
	School of Medicine Parking Lots	(11,421)	
	Subtotal	(11,421) 645,163	(2,950) 305,495
Yoshino machi	Gifu University Satellite Campus		(591)
Kano	Gifu University Faculty of Education Affiliated Compulsory School System (Elementary-Junior High)	30,559	13,531
Hirui	Hayano Residence Seminar House	5,539	228
Minokamo	Gifu Field Science Center Minokamo Farm	(18) 95,832	1,690
Hagiwara	Gifu Field Science Center Kurayama Forest	(2,460) 5,536,478	1,103
Takayama	Takayama Field Station, River Basin Research Center	(207,697)	778
Others	Staff Dormitory	18,230	8,813
Total () indicates the areas of land on lease. The number above the parenthesis does not include the land on lease.		(221,596) 6,331,841	(3,541) 331,638

Gifu University Satellite Campus (4th floor
of the East Tower at Gifu Skywing 37,
6-31 Yoshinomachi, Gifu City)
Near JR Gifu Station
(Gifu University Satellite Campus is
scheduled to close at the end of June, 2023.)



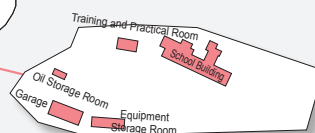
Takayama Field Station,
River Basin Research Center
(Iwaimachi, Takayama City)
22 km from JR Takayama Station. 50 minutes by car



Gifu University (1-1 Yanagido, Gifu City)

7 km from JR Gifu Station.
20 minutes by car
20 km from Gifu-Hashima Station
(Shinkansen Line). 40 minutes by car

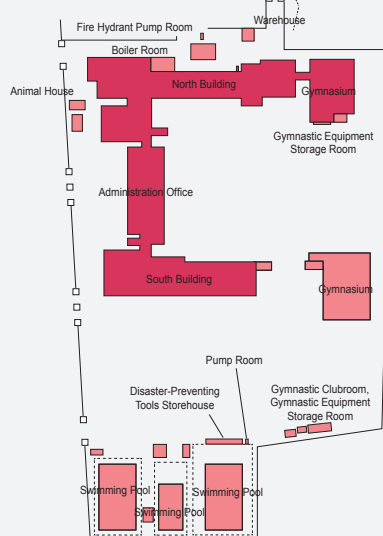
Hayano Residence
Seminar House
(Hiruicho, Ogaki City)
6 km from JR Ogaki Station.
15 minutes by car



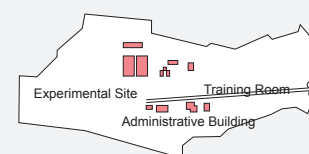
Kuraiyama Forest, Gifu Field Science Center
(Faculty of Applied Biological Sciences)
(Hagiwaracho, Gero City)
10 km from JR Joro Station. 20 minutes by car



Minokamo Farm, Gifu Field Science Center
(Faculty of Applied Biological Sciences)
(Makino, Minokamo City)
6 km from JR Kobi Station. 10 minutes by car



Gifu University Faculty of Education Affiliated Compulsory
School System (Elementary-Junior High)
1.2 km from JR Gifu Station. 5 minutes by car



Location / Access

Faculty / Center		Telephone		Fax		Postcode	Address
Yanagido Campus	Central Administration Office	+81-(0)58	230-1111	+81-(0)58	293-2021	501-1193	1-1 Yanagido, Gifu City
	Faculty of Education / Graduate School of Education		293-2203		293-2207		
	• Special Needs Education Center	+81-(0)58	293-2350	+81-(0)58	293-2355		
	• Co-Creative Research and Development Center for Learning		293-2345		293-3384		
	Faculty of Regional Studies / Graduate School of Regional Studies	+81-(0)58	293-3002	+81-(0)58	293-3008		
	Faculty of Engineering / Graduate School of Engineering		293-2365		293-2389		
	• Center for Infrastructure Asset Management Technology and Research		293-2419		293-2419		
	• Applied Meteorological Research Center	+81-(0)58	293-2365	+81-(0)58	293-2389		
	• Center for Applied Research of Plasma		293-2365		293-2389		
	• Center for Space Research and Utilization Promotion		293-2365		293-2389		
	• Supporting and Development Center for Technology Education		293-2374		293-2389		
	Faculty of Applied Biological Sciences		293-2834		293-2840		
	• Gifu Field Science Center		293-2972		293-2977		
	• Animal Medical Center	+81-(0)58	293-2962	+81-(0)58	293-2964		
	• Research Center for Wildlife Management		293-2959		293-2959		
	• Center for the Development and Promotion of Joint Veterinary Education		293-3408		293-2841		
	• Education and Research Center for Food Animal Health		293-2834		293-2840		
	School of Social System Management	+81-(0)58	293-3440	+81-(0)58	293-3441		
	Graduate School of Natural Science and Technology	+81-(0)58	293-3084	+81-(0)58	293-2389		
	Joint Graduate School of Veterinary Sciences	+81-(0)58	293-2987	+81-(0)58	293-2992		
	United Graduate School of Agricultural Science	+81-(0)58	293-2984	+81-(0)58	293-2992		
	University Library	+81-(0)58	293-2184	+81-(0)58	293-2194		
	Center for Collaborative Study with Community	+81-(0)58	293-3880	+81-(0)58	293-3881		
	River Basin Research Center	+81-(0)58	293-2061	+81-(0)58	293-2062		
	Organization for Promotion of Glocalization	+81-(0)58	293-3351	+81-(0)58	293-2143		
	• Center for Japanese Language and Culture						
	Health Administration Center	+81-(0)58	293-2174	+81-(0)58	293-2177		
	Organization for Promotion of Higher Education and Student Support	+81-(0)58	293-2133	+81-(0)58	293-3382		
	Academic Research and Industry-Academia-Government Collaboration		293-3339		293-3209		
	• Life Science Research Center		293-3171		293-3172		
	• Gifu Renewable Energy System Research Center		293-2685		293-2734		
	• Center for Advanced and Smart Die Engineering Technology (G-CADET)	+81-(0)58	293-2496	+81-(0)58	293-2496		
	• Gu Composites Center		293-3184		293-2022		
	• Regional Disaster Mitigation Research Center		293-3890		293-3891		
	• Center for Conservation of Microbial Genetic Resources		230-6146		-		
	School of Medicine / Graduate School of Medicine		230-6053		230-6060	501-1194	
	University Hospital		230-6000		230-6080		
	Medical Education Development Center (Collaboration Center for Medical Education)	+81-(0)58	230-6470	+81-(0)58	230-6468		
	Center for Regional Medicine		230-6539		230-6538		
	United Graduate School of Drug Discovery and Medical Information Sciences	+81-(0)58	230-7602	+81-(0)58	230-7604		
Yoshino	Gifu University Satellite Campus	+81-(0)58	212-0390	+81-(0)58	212-0391	500-8844	4th floor of the East Tower at Gifu Skywing 37, 6-31 Yoshinomachi, Gifu City
Kano	Gifu University Faculty of Education Affiliated Compulsory School System (Elementary-Junior High)	+81-(0)58	271-3545 271-3507	+81-(0)58	271-1816	500-8482	74 Kano Otemachi, Gifu City
Ogaki	Hayano Residence Seminar House	+81-(0)584	71-0151	+81-(0)584	71-0151	503-2216	1777 Hiruicho, Ogaki City
Mino	Minokamo Farm, Gifu Field Science Center (Faculty of Applied Biological Sciences)	+81-(0)574	25-2807	+81-(0)574	25-2807	505-0016	1918-1 Makino, Minokamo City
Gero	Kuraiyama Forest, Gifu Field Science Center (Faculty of Applied Biological Sciences)	+81-(0)576	54-1611	+81-(0)576	54-1477	509-2501	Yamanokuchi, Hagiwaracho, Gero City
Takayama	Takayama Field Station, River Basin Research Center	+81-(0)577	31-1005	+81-(0)577	31-1016	506-0815	919-47 Iwaimachi, Takayama City

Access to Gifu University

By Car

Meishin Expressway

◦From Ichinomiya Interchange (25 km)

Exit from the Ichinomiya Interchange to Route 22, and travel north to the Central Gifu City: 50 minutes

Tokai-Hokuriku Expressway

◦From Gifu-Kakamigahara Interchange (20 km)

Exit from the Gifu-Kakamigahara Interchange to Route 21, and travel west to Gifu Kanjo Sen (Gifu Loop Route): 40 minutes

Tōkai-Kanjō Expressway

Exit from the Yamagata Interchange: 20 minutes (10km)

Exit from the Ōno-Gōdo Interchange: 30 minutes (15km)

By Bus/Taxi

From JR Gifu Station/Meitetsu Gifu Station to Gifu University (7 km)

◦30 minutes by Gifu Bus ◦20 minutes by taxi

By Train

Access from JR Nagoya Station/Meitetsu Nagoya Station/Kintetsu Nagoya Station

◦From JR Nagoya Station to JR Gifu Station (via Tokaido Main Line): 18 minutes by the new rapid train

◦From Meitetsu Nagoya Station to Meitetsu Gifu Station (via Meitetsu Nagoya Main Line): 29 minutes by the limited express train

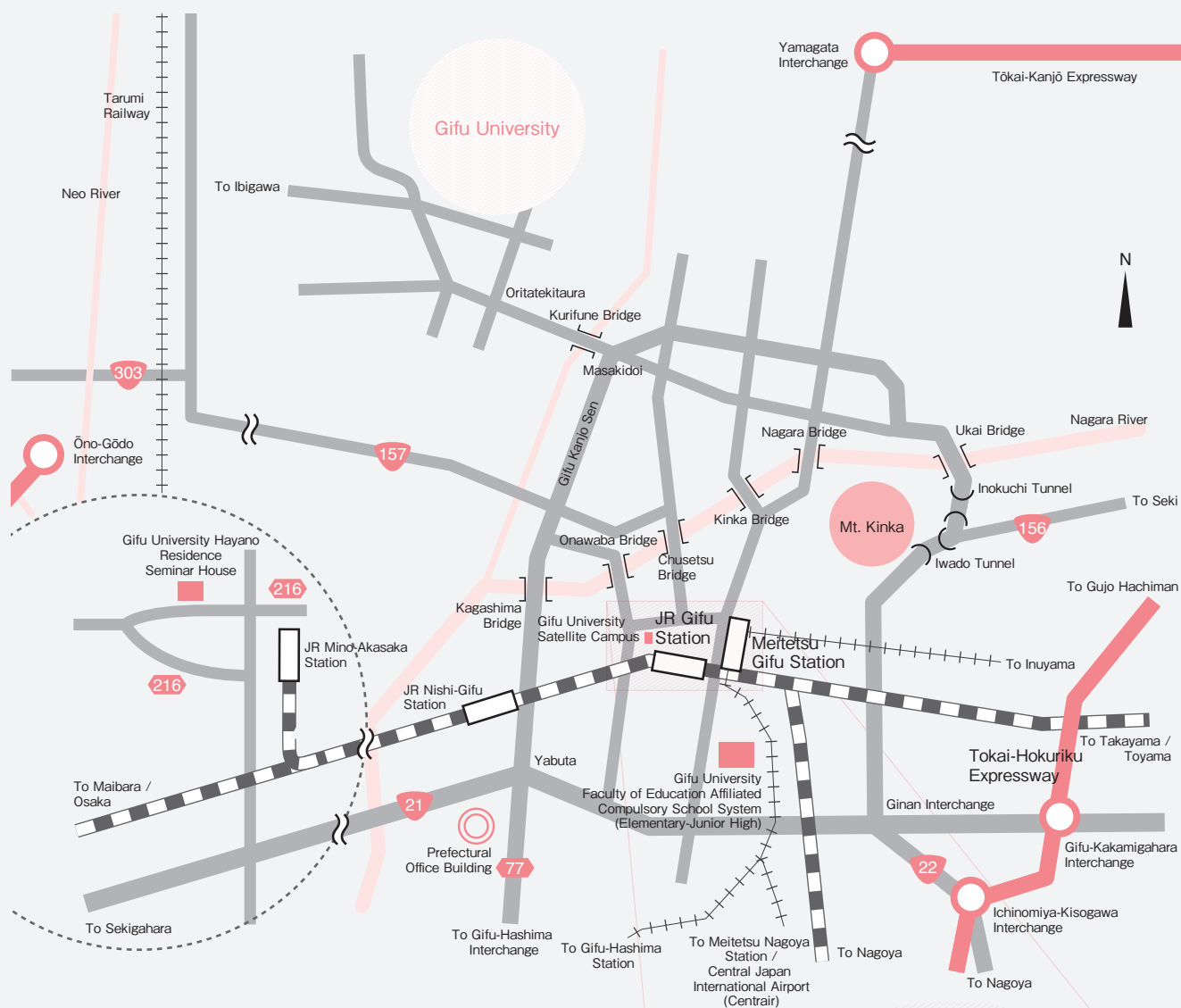
Access from Gifu-Hashima Station (Shinkansen Line)

◦Walk to Meitetsu Shin Hashima Station in front of Gifu-Hashima Station, and take a train from Meitetsu Shin Hashima Station to Meitetsu Gifu Station (via Meitetsu Hashima Line): 30 minutes

◦40 minutes to Gifu University by taxi

Access from Central Japan International Airport (Centair)

◦From Centair to Meitetsu Gifu Station (via Meitetsu Airport Express/μ-Sky): 57 minutes



Bus Stops

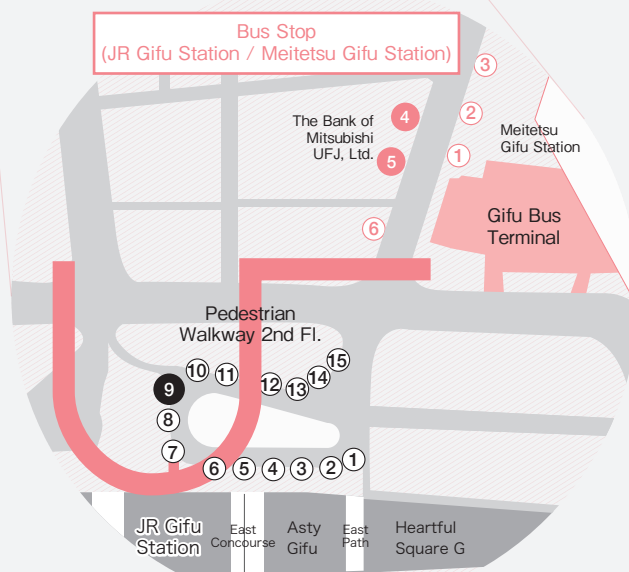
Bus Stops at JR Gifu Eki Kitaguchi (Gifu Station North Exit)

Bus Stop	Line	Route Number	Destination	Time Required
JR Gifu - 9	Gifu University/ University Hospital	C70	Gifu University Hospital	30 minutes
JR Gifu - 9	Gifu University/ University Hospital	C71	Gifu University Hospital	25 minutes (Seiryu Liner)
JR Gifu - 9	Gifu University/ University Hospital	C72	Gifu University Hospital	25 minutes (nonstop)
JR Gifu - 9	Gifu University/ University Hospital	C72	Gifu University	30 minutes (nonstop)
JR Gifu - 9	Ginancho (via Nagara Bridge)	N45	Gifu University Hospital	35 minutes

Bus Stops at Meitetsu Gifu Station

Bus Stop	Line	Route Number	Destination	Time Required
Meitetsu Gifu - 5	Gifu University/ University Hospital	C70	Gifu University Hospital	30 minutes
Bus Terminal - E	Gifu University/ University Hospital	C72	Gifu University Hospital	25 minutes (nonstop)
Bus Terminal - E	Gifu University/ University Hospital	C72	Gifu University	30 minutes (nonstop)
Meitetsu Gifu - 4	Ginancho (via Nagara Bridge)	N45	Gifu University Hospital	35 minutes

- All buses stop at Gifu University. Buses running via Chusetsu Bridge for Bus Route C.
- No nonstop bus service during school holidays and weekends.
- Seiryu Liner is an articulated bus which has only three stops to Gifu University (capacity: 130 passengers).



MAKE NEW STANDARDS.



東海国立
大学機構



GIFU UNIVERSITY

Gifu University

1-1 Yanagido, Gifu City, Gifu 501-1193, JAPAN
Phone: +81-(0)58-293-2009 Fax: +81-(0)58-293-2021
e-mail: kohositu@t.gifu-u.ac.jp
URL <https://www.gifu-u.ac.jp/en/>

International General Affairs Office
International Engagement Division
Student Affairs Department
Phone: +81-(0)58-293-3351 Fax: +81-(0)58-293-2143

Inbound and Outbound Student Affairs Office
Phone: +81-(0)58-293-2142 Fax: +81-(0)58-293-2143