




Tokai National Higher Education and Research System

GIFU UNIVERSITY

2020





President's Message

As an institution committed to pursuing greater excellence, we have launched the National University Corporation called “Tokai National Higher Education and Research System” on April 1, 2020, bringing together two academic institutions of excellence – Gifu University and Nagoya University – into a single framework. Gifu University will be officially called, “Tokai National Higher Education and Research System, Gifu University.” This move will enable our two universities to engage in a wider range of joint educational and research activities. Specifically, the two universities jointly operate the Academic Central for English and mathematical data sciences education, and has established four core educational and research directives, namely, Institute for Glyco-core Research (IGCORE), Center for Healthcare Information Technology (C-HiT) Aerospace Research and Education Hub (AREH) and Education and Research Institute for Agricultural Sciences. April 1, 2020 marked an important milestone for us to make a great leap forward to a successful implementation of this nation's first academic integration scheme. As a proud, responsible member of this new academic entity, we continue to enhance our global competitiveness and contribute to the well-being and prosperity of our local communities and citizens bearing the principle, “Creating our future with strong commitment and courage.”

Gifu University, which was founded in 1949, consists of diverse faculties each with its own rich history and solid reputation. For example, Teacher's Training School (the present Faculty of Education) was established in 1873, and the Faculty of Applied Biological Sciences was established as early as 1923. Throughout its history, Gifu University has always remained deeply committed to being a community that challenges its members to grow and mature, and an institution that develops human resources who can “learn, explore and contribute.” The launching of Tokai National Higher Education and Research System gives us a renewed sense of commitment and pledge to pursue this goal in the years to come.

Since its establishment, Gifu University has grown into a mid-sized university with the inclusion of five major faculties, in addition to the aforementioned two faculties, the Faculty of Engineering, the School of Medicine, the Faculty of Regional Studies, four master's programs, one professional degree program, two doctoral programs, two united graduate schools and one joint graduate school. With the relocation of the School of Medicine and University Hospital in 2004, all faculties and schools are now located on a single campus.

The university as a whole share and embrace a common pursuit to fulfilling our long-term mission of “being a center for community revitalization and nationwide and international education and research hub in our fields of expertise.” To this end, the University has been spearheading cutting-edge research activities in life sciences, environmental energy and manufacturing all of which will play an integral role in the four directives of the Tokai National Higher Education and Research System. Moreover, we are proud of our Medical Education Development Center (MEDC) which is the only collaboration center for medical education accredited by the Ministry of Education, Culture, Sports, Science and Technology (MEXT) in April 2010.

As a center of community engagement, Gifu University has concluded active partnership agreements with 28 municipalities in Gifu Prefecture, and had the honor to receive the highest evaluation from MEXT for its successful execution of “Center of Community (COC)” program, catapulted by the Ministry. To fulfill our commitment to serving our local communities, the University has taken up the task of addressing issues and challenges integral to each community and developing human resources capable of meeting the needs and expectations of local citizens.

In terms of our physical operations, we have been able to integrate the buildings and research facilities for fourth through sixth year students of Gifu Pharmaceutical University onto the same campus. In addition, the Gifu Disaster Mitigation Center opened in April 2015, and the Gifu Central Livestock Hygiene Service Center and the Museum of Infrastructure started their operations in 2017. The Innovation Hub for Smart Mold Processing was launched in 2018 and the Gifu Prefectural Research Institute for Food Sciences opened in April 2019. Furthermore, we eagerly anticipate the eventual completion and opening of the Intelligent Production Technology Research & Development Center for Aerospace in 2021. All of these projects were undertaken to further strengthen and consolidate our functions, particularly those related to advanced education and research. In addition to that, being situated in a suburban area with abundant greenery makes Gifu University a pleasant and attractive place for people to study, work, and live within one campus. (Please refer to the Campus Map on page 44 and 45 for the specific location of each facility.) We, therefore, welcome anyone who share our aspirations for global attainment to join us in making an impact and contribution to the well-being of local citizens in Gifu and the Tokai region.

Other major initiatives undertaken by the University is the establishment of our satellite campus near JR Gifu Station. This initiative was taken in response to the large number of out of town students and employees commuting daily to our main campus, which is approximately a 30-minute commute from the station. A new education wing fully equipped with IT facilities was established on the fourth floor of the east wing of Gifu Skywing 37, a 37-floor high-rise building located in front of JR Gifu Station in October 2012. The current facility is utilized and shared by Gifu University students and staff and 23 member institutes of the Gifu Network University Consortium of universities, junior colleges, and technical colleges. In addition, the satellite campus is also available for general public seminars and corporate events that align with the aims of the campus. In fact, we have seen our facilities extensively used by the general public, including on weekends. Furthermore, the launching of Gifu University Satellite Campus Open Course Academic Club in April 2016 offers open courses and lectures to the community. These popular courses and lectures are given by the university's professors emeriti, and cover a wide range of academic and cultural interests.

The various initiatives and changes directed by the University have been a concerted effort by all of our faculties and teaching staff to make the university a place where people learn and grow and to reinforce our commitment to developing human resources with high levels of professional expertise. To cite an example, Gifu



University has successfully attained the highest “S” recognition as a nationwide model by MEXT for our various local as well as international engagement activities through the implementation of the Center of Community (COC), the creation of advanced type COC+ projects, the formation of an agricultural science consortium consisting of 16 universities in South Asia (IC-GU12: International Consortium of Universities in South and Southeast Asia for the Doctoral Education in Agricultural Science and Biotechnology), and the creation of an international engineering network of 44 universities. The university has also expanded offerings of various courses such as: “Program to Develop Human Resources with Expertise in Dies,” “Maintenance Expert Fostering Program” for maintenance and operation of infrastructure, “Professional Degree Program” for highly-professional personnel in school administration, Emergency Medical Network Development Program, and International Studies in Liberal Arts. These specific directions are in line with our charge to further boost Gifu University’s presence and pride not only in Central Japan (Tokai) region but also nationally and overseas, and through these efforts we hope to win greater approval from our students, their guardians, local residents and other stakeholders.

While we take great pride in what have been accomplished so far, we fully grasp the importance of relentless reflection and reassessment of our education and research efforts to continually meet the evolving needs of not only the local community and Japan, but also the international community. Notably, the global expansion of the university is of particular importance. Bolstering our exchanges with overseas partner universities will make it possible to increase admission of more than 400 international students studying in our campus. We also urge Japanese students to venture overseas where they can ascertain and define the various local community, regional and international needs and concerns, and thus address them through comprehensive and systematic research and study by developing appropriate solutions. We believe that by taking proactive approaches, students could make their mark in the global community. To this end, we launched four Joint Degree Programs for Master’s and Doctoral Degree with overseas universities in 2019. Underlying the manifestation of these joint international degree programs, it is our firm belief in undertaking the path of internationalization that is rooted in local communities thus rendering “glocal” services that benefits local communities in Japan and overseas. This is the same approach inherent in our COC and COC+ projects and activities as previously intimated.

The governance granted to the university president and board members provides us the role of think tank in carefully generating and inspiring policy ideas that fulfill the centrality of the university’s “glocalization” efforts. I invite you to collaborate with us as academic and professional partners in realizing this mission.

MORIWAKI Hisataka
President, Gifu University

Contents

President’s Message	01
Ideals and Aims	02
Charter	03
Three Policies for Education	04
Approach on Environment	05
Organization Chart	06
Academic Organization	07

Education “Learn” as a keyword

Organization for Promotion of Higher Education and Student Support	14
Number of Students	16
Applicants and Admissions	18
Number of Graduates (Undergraduate)/ Career Paths	19
Medical Licensing Examination Pass Rate/ Teacher Employment Rate	20
Number of Graduates (Graduate School)/ Career Paths	21
Student Support Facility	23
Student Club Activity	24

Research “Explore” as a keyword

Academic Research & Industry-Academia-Government Collaboration	25
Research Initiatives	26
Grants-in-Aid for Scientific Research	28
Joint Research/Commissioned Research	29
Number of Inventions for Patent	29

For Society “Contribute” as a keyword

University-Community Collaboration	30
Extension Course/Symposium/Forum	31
City College Program	31
Senior High School-University Collaboration	31

International Relations

Organization for Promotion of Glocalization	32
Statistical Data on Inbound and Outbound	33
International Academic Exchange	35
Researchers Inbound / Outbound	37
International House	37
Overseas Office	37

Organization

Board Members	38
Number of Board Members, Teaching and General Staff	40
Budget	41
Endowment	41
History	42
Presidents Past and Present	43

Campus

Campus Map	44
Area of Campus and Affiliated Facility	46
Location/Access	48

Learning, Exploring, and Contributing

University Emblem



Designed by Mr. Hanichi Sakai, Former Professor of Gifu University

-Gifu University's emblem signifies a boat traditionally used for cormorant fishing and the fire kindled on it to attract fish. The fire represents learning, while the boat represents human happiness.

-The light and dark splashes the Earth and the natural world. They represent all existence and activity, harmony and balance.

-The combination of black and orange signifies passion. It also represents rich and dignified sensibilities.

-The simplified shape signifies the cleanliness and dynamic character of contemporary life. It also represents the speed and intellectual tenor of our times.

University Symbol



Designed by Mr. Hiromi Miyagawa

In 2009, to mark the 60th anniversary of the University's founding, the University solicited design proposals nationwide and chose this symbol from among the proposals. The design embodies our hope that the rich educational and research activities being carried out in Gifu will be known throughout Japan and to the world, and that the students of Gifu University will advance on a sure path—like an arrow—toward their respective futures. The emblem incorporates a powerful bow, forming the letter G for "Gifu."

Ideals

Blessed with abundant nature and referred to as the country of seiryu (clear water), for historical and geographical reasons, the Gifu region has developed and passed down a diverse culture and technology that brought eastern and western cultures together. Having inherited these attributes from the Gifu region, Gifu University, a constituent member of Tokai National Higher Education and Research System trains students, who will later actively participate in society. We provide a place where students learn, explore, and contribute in an environment conducive to exploration and growth.

Applying the distinguishing feature of having all undergraduate and graduate programs located on a single campus for educational and research activities, Gifu University provides an education focused on training highly skilled professionals. We are committed to conducting high-quality research that is the foundation of that education and to achieving internationalization rooted in the local community. The university strives to become a core hub for reinvigorating local communities through such efforts as providing local communities with the benefits derived from the above activities.

Aims

1. Education

Gifu University promotes learning based on the students own efforts. It has reinforced its education quality verification system, trains highly skilled professionals, and undertakes community-based "Teach for Communities" activities. By introducing courses on design ideas in its science and technology Master's programs and stressing liberal arts-based general education, the university strongly promotes the training of students who support innovation. Other priorities include the development of medical education that meets international standards.

2. Research

Gifu University consistently engages in high-quality research activities, and this forms a foundation for the education it provides. As a key element in these efforts, the university aims to serve as an advanced research hub in its unique research fields in the life sciences, environmental studies, and manufacturing fields, and it relies on its particular strengths to provide society with the benefits obtained from its activities.

3. Internationalization

Gifu University undertakes not only internationalization rooted in the local community, but also glocalization by providing the benefits of internationalization to the local community. The university promotes various policies that lead to internationalization. These include creating a multicultural international liberal arts course, organizing and expanding programs that bring Japanese and international students together, and reinforcing support for international students gaining employment opportunities.

4. Social Contribution

Gifu University supports the local community by conducting local community-oriented education and research and promoting internationalization. In particular, for its COC (Center of Community) projects, the university is increasing the quantity and improving the quality of its efforts to promote regional revitalization by forming a COC consortium to expand collaboration with local governments, local enterprises, and other universities both in and outside the prefecture.

5. Regional Medicine

Gifu University reinforces highly advanced medical care functions of the University Hospital and institution in surrounding areas and promotes community development initiatives with Gifu Prefecture by formulating a regional medicine advancement plan.

Charter of Student : What Gifu University expects of its students

The few years that the students spend at Gifu University will surely be some of the most brilliant years of your life, and therefore arguably the most important. Your student life at Gifu University will play a decisive role in your future, however you choose to live it. As you build a foundation for scholarly pursuits and acquire advanced and specialized knowledge, we ask that you also strive to develop your capacity for perception and sensitivity towards humanity, nature, and society. The University faculty will do its utmost to meet your expectations, and we ask that you, in turn, put forth your greatest efforts.

- Read books, and strive to build a solid foundation for learning.
- Develop an appreciation for the arts, and aspire to deepen your understanding of humanity and nature.
- Endeavor to acquire the advanced and specialized knowledge needed to be a professional.
- Assemble your thoughts into clear and logical pieces of writing, so that you can present your ideas effectively.
- Enhance proficiency in English, and develop the skills needed for mutual understanding in today's global environment.
- Use information and communication technology prudently, and develop your ability to locate and discern factual information and convey information accurately to others.
- Form healthy living habits, and develop physical stamina and vigor for a long and healthy life.

Charter of Faculty : What Gifu University asks of its faculty

Gifu University makes efforts to embody the ideals of research and education. In accordance with the Charter of Student, the greatest mission with which the University is charged is the cultivation of outstanding talent that will meet the needs of society. We believe that supporting first-rate research and a passion for learning are essential components of high-quality education. To this end, the faculty, as both researchers and educators, must remain conscious at all times of the University's high standard of ethics, while pursuing original research on par with the world's best.

- As faculty members of a center of education and research, teach in a manner that supports the Charter of Student.
- Cultivate competent personnel who possess a depth and breadth of views and the comprehensive skills needed for sound evaluation and judgment.
- As both researchers and educators, let your actions reflect a constant awareness of ethics.
- Hold lofty goals, and aim to conduct research on par with the world's best.
- Pursue original research with a broad perspective and view for the long-term.
- Seek to contribute to society in your field of study.

Charter of Philanthropy : How Gifu University responds to the expectations and needs of society

The image invoked by the word 'university' has traditionally been one of a lofty presence far removed from society, a so-called 'ivory tower.' However, since the move to incorporate national universities in Japan, they have become corporate entities upon which today's society places vast expectations. Universities have responded to these expectations by actively serving and giving back to society. As a regional university situated in the center of Japan, Gifu University is expected to respond to the broad expectations and demands of the regional community in areas of education, research, industry, medicine, culture and others, and contribute to the international community as well.

- Cultivate excellent human resources, as this is the greatest social contribution expected of the University.
- Cooperate and collaborate with the regional community, as this is one of the most important obligations of a regional university.
- Help breathe new life into regional industry through cooperation with industry and government.
- Contribute to the progress of regional education, culture, economy, and public administration through cooperation with the region's citizens and administrative authorities.
- The University Hospital is also expected to carry out its roles as a center of advanced medical treatment and of development of local medical care.
- Work with developing and developed nations for the resolution of international and social issues.
- Contribute to the international community through student exchange programs and other collaborations with overseas educational institutions.

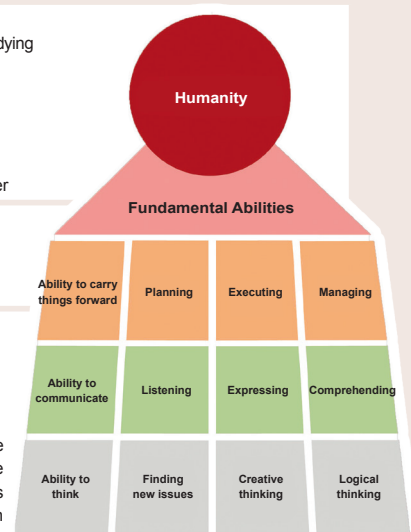
Charter of Administration : What Gifu University requires of its administration

Society has high expectations for the University regarding education, research, and social contributions. In this regard, it is imperative that the University responds to these expectations by setting and achieving the Mid-Term Objectives, and making and implementing the Mid-Term Plan. The University aims to advance its original goals and to see that the University itself progresses as an organization with a unique structure and system of values. To do so, it is crucial that the staff and faculty share a common awareness of the issues concerned and engage in the administrative affairs of the University under the leadership of the President of the University. Given that necessity, it is essential that we focus on strategy and work to build a distinctive university. Given the unforgiving economic conditions that all national universities face, administration and management require the element of strategy in their operations if they hope to maintain the activities of the University and advance the education, research, and social contributions that are its essential responsibilities.

- Achieve the Mid-Term Objectives and execute the Mid-Term Plan.
- Emphasize the importance of strategizing, and carry out administration with clear objectives under the leadership of the University President.
- Conduct operations with a high priority placed on environmental issues. Concerns for these issues should be reflected in the University education, research, and social contributions.
- Operate under a clear management strategy in order to overcome harsh economic conditions.
- Be diligent in the acquisition of external funding and strengthen the University's economic base.
- Emphasize transparency and the public accessibility of information, and conduct management in a manner that is both efficient and logical.
- Hire first-rate people for the faculty and cultivate their talents.
- Use the University assets such as student educational data and educational research data of faculty for the promotion of quality education and research work.

■ Three Policies for Education (for Undergraduate)

Diploma Policy	<p>Blessed with the unique feature of having all faculties clustered within one campus, Gifu University promotes education focusing on nurturing highly-skilled professionals, outstanding research for high level education, and internationalization rooted in the local community. Under the motto of "Learning, Exploring and Contributing," the university awards bachelor's degrees to those who have comprehensively acquired the underlying principles and specialized skills in their respective fields of expertise.</p> <ul style="list-style-type: none"> • Fundamental abilities that cultivate humanity: <ul style="list-style-type: none"> - Ability to think (comprehensive judgment) - Ability to communicate (communication skills) - Ability to carry things forward (action-taking skills) • A high degree of specialization required of professionals: <ul style="list-style-type: none"> - Sophisticated expertise and skills that are required to further the development of society - Ways of thinking and viewpoints based on extensive knowledge and insight - A sense of social responsibility based on a broad liberal arts education and a high standard of ethics
Curriculum Policy	<p>Gifu University organizes and implements its systematic education curriculum with clear goals, and carries out constant reforms based on the following curriculum policy so that it may produce professionals equipped with fundamental abilities as well as specialized skills.</p> <ul style="list-style-type: none"> • Develop fundamental abilities that cultivate humanity • Properly appraise own academic achievements and cultivate a mindset of autonomous studying • Implement liberal arts education ranging from humanities, social sciences, natural sciences, foreign languages and health sciences for students to assess their own academic achievements and to study proactively towards life-long learning • Train students to have professional viewpoints and ways of thinking reflecting their respective fields of expertise • Cultivate ethical standards that enable students to act in a socially responsible manner
Admission Policy	<p>With the campus situated in a natural lush green environment, Gifu University seeks to foster individuals who are able to "learn, explore and contribute" in a wide range of academic pursuits. Gifu University seeks to admit students who possess the following qualities, on top of basic knowledge and expertise:</p> <ul style="list-style-type: none"> • Those who have intellectual curiosity and are self-motivated to learn and study • Those who see things from multiple perspectives and capable of logical thinking • Those who listen to opinions of others and express their ideas • Those who are motivated to actively inquire about the issues before them • Those who will play active roles locally and globally <p>To select students who are equipped with the aforementioned qualities, and in line with own diploma and curriculum policies, the respective faculties conduct an entrance examination from multiple and comprehensive perspectives to evaluate students through their academic achievement and essay tests. Please refer to the admission policies or the student recruitment guidelines of each faculty.</p>



■ Three Policies for Education (for Graduate)

Diploma Policy	<p>Blessed with the unique feature of having all faculties clustered within one campus, Gifu University Graduate School promotes education focusing on nurturing highly-skilled professionals, outstanding research for high level education, and internationalization rooted in the local community. Under the motto of "Learning, Exploring and Contributing," the university awards degrees to those who have comprehensively acquired the underlying principles and specialized skills in their respective fields of expertise.</p> <ul style="list-style-type: none"> • Fundamental abilities as highly-skilled professionals: <ul style="list-style-type: none"> - Ability to think (comprehensive judgment) - Ability to communicate (communication skills) - Ability to carry things forward (action-taking skills) • Advanced specialized knowledge and technical skills: <ul style="list-style-type: none"> - More sophisticated expertise and skills that are required to further the development of society - Ways of thinking and viewpoints based on more extensive knowledge and insight - A sense of social responsibility based on a broader liberal arts education and a higher standard of ethics
Curriculum Policy	<p>Gifu University Graduate School organizes and implements its systematic education curriculum with clear goals, and carries out constant reforms based on the following curriculum policy so that it may produce professionals equipped with fundamental abilities as well as specialized skills</p> <ul style="list-style-type: none"> • Cultivate sophisticated expertise and skills that are required to further the development of society • Develop ways of thinking and viewpoints based on extensive knowledge and insight • Cultivate a sense of social responsibility based on a broad liberal arts education and a high standard of ethics
Admission Policy	<p>With the campus situated in a natural lush green environment, Gifu University Graduate School seeks to foster individuals who are able to "learn, explore and contribute" in a wide range of academic pursuits. Gifu University Graduate School seeks to admit students who possess the following qualities, on top of basic knowledge and expertise:</p> <ul style="list-style-type: none"> • Those who have intellectual curiosity and are self-motivated to conduct research • Those who can contemplate things comprehensively and logically • Those who have a broad range of knowledge and high standard of ethics, and who acknowledge social responsibility in their research • Those who will play active roles locally and globally <p>To select students who are equipped with the aforementioned qualities, and in line with own diploma and curriculum policies, the respective graduate schools conduct an entrance examination from multiple and comprehensive perspectives to evaluate students through their academic achievement and essay tests. Please refer to the admission policies or the student recruitment guidelines of each faculty.</p>

On November 27, 2009, Gifu University declared itself an “environmental university,” indicating that it would contribute to the regional community by pursuing ongoing, unique programs of environmental initiatives based on the Gifu University Environmental Policy.

[Gifu University Environmental Policy]

Gifu University continues and expands activities for “environmental university” while aiming for achieving its ideals and aims. The University also makes campus friendly to the environment and develops human resources who will initiate environmental conservation for the future.

[Basic Policies]

1. Pursue environmental education and research in a way that takes advantage of the University's unique characteristics.
2. Be aware of the environmental aspect of educational and research activities at all times, evaluate the environmental impact of the University's activities, and strive to prevent environmental pollution.
3. Work to significantly lower the environmental impact of the University's activities by saving energy and resources.
4. Thoroughly comply with environmental laws and regulations applicable to education and research as well as with other provisions and requirements to which the University has acceded.
5. Establish and work to continuously improve a framework for reviewing the University's environmental management system.
6. Mitigate the problems of climate change and protect biodiversity through education and research.
7. Establish and work to achieve activity targets and objectives for each academic year.

Gifu University publicizes this Environmental Policy both on and off campus.

Gifu University has earned university-wide ISO 14001 certification (excluding the University Hospital)

After the Faculty of Regional Studies earned certification under ISO 14001, a global environmental management system standard, in 2003, the scope of certification was successively expanded, and the entire university had earned it by 2013, with the exception of the University Hospital.

The university earned certification under ISO14001:2015, the new standard of ISO14001 in 2016 and its environmental management is monitored by this new standard.

Gifu University publishes an Environment White Paper.

Gifu University publishes an Environment White Paper in September every year to make Gifu University's efforts for environment conservation public.



Opinion Exchange Meeting with other universities over Environment White Paper



Gifu University Environment Month (every November)

Gifu University has designated November as Environment Month, a time during which a variety of environment-related events are carried out, based on the date of its Environmental University declaration (November 27, 2009).



Campus cleanup by students and faculty members



Environmental University Forum



ISO14001 internal environmental audit by students



Completion Certificate Ceremony for "ISO14001 Internal Environmental Auditor Training Course"

Organization Chart

Tokai National Higher Education and Research System

Gifu University

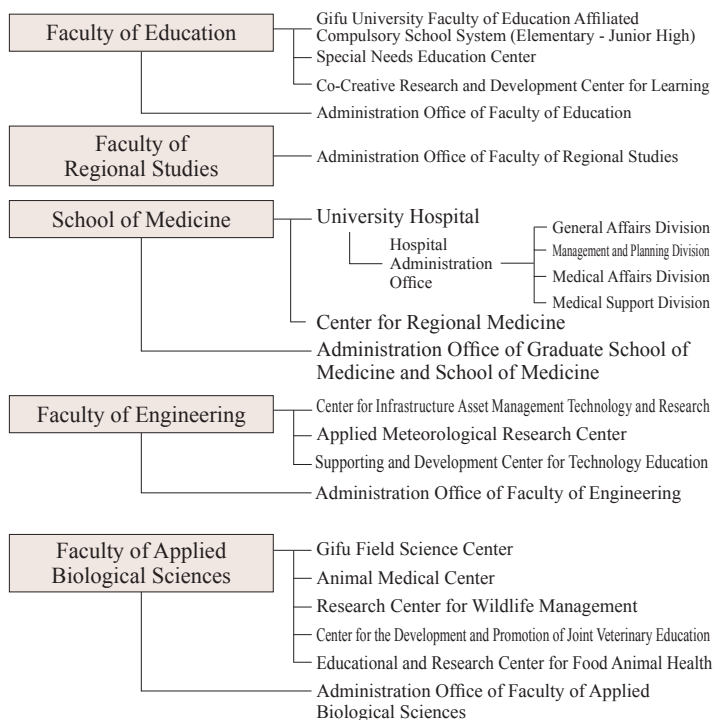
Nagoya University

President

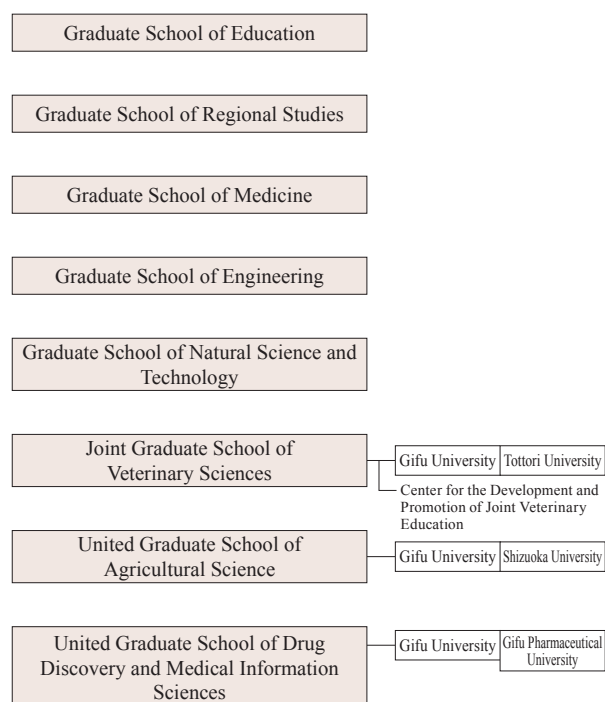
Vice President

■ Academic and Administrative Organization

Faculties



Graduate Schools



Institute for Advanced Study

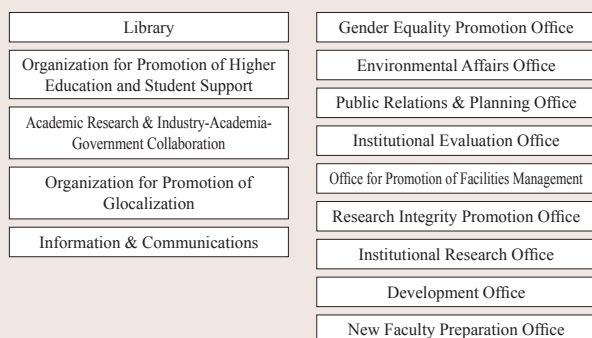
Center for Collaborative Study with Community

River Basin Research Center

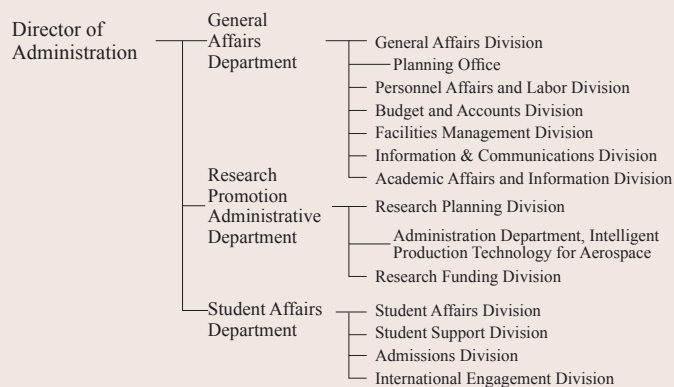
Health Administration Center

Collaboration Center for Medical Education
Medical Education Development Center

■ Administration Support Organization



■ Administration Organization



■ Faculty / School

Education (1 Training Course, 12 Courses)	Training Course for School Teachers	Courses	National Language Education, Social Studies Education, Mathematics Education, Science Education, Music Education, Art Education, Health and Physical Education, Technology Education, Home Economics Education, English Education, School Education, Special Needs Education.
		Affiliated Institutions	Special Needs Education Center
			Co-Creative Research and Development Center for Learning
			Gifu University Faculty of Education Affiliated Compulsory School System (Elementary-Junior High)

Regional Studies (2 Departments, 4 Domains)	Department of Policy Studies	Domains	Regional Policy, Environmental Studies
	Department of Cultural Studies		Cultural Studies, Regional Structure

School of Medicine (2 Courses)	Medical Course	Tutorial Courses	Human Body, Neuroanatomy & Neuroscience, Molecular Biology, Physiology, Microbiology, Pharmacology and Toxicology, Pathology, Community & Occupational Health, Cardiology, respiratory, nephrology and urology, Gastroenterology, hematology and laboratory medicine, Endocrine and metabolic system, Neurology, Psychiatry, Childhealth, Reproduction & Gynecology, Bioethics & Legal Medicine, Clinical Genetics & Ethics, Dermatology, Clinical Immunology, Eye, Ear, Nose and Throat, Locomotor system, Anesthesiology and Emergency medicine, Diagnostic Imaging and Radiation Oncology
	Nursing Course	Courses	Basic Health Science and Fundamental Nursing, Maternal and Child Health Nursing, Adult Nursing, Community Health Care Nursing
		Affiliated Institutions	University Hospital
			Center for Regional Medicine

Engineering (4 Departments, 9 Courses)	Department of Civil Engineering	Courses	Environmental Studies, Disaster Reduction Studies
	Department of Mechanical Engineering		Mechanical Engineering, Intelligent Mechanical Engineering
	Department of Chemistry and Biomolecular Science		Materials Chemistry, Biomolecular Science
	Department of Electrical, Electronic and Computer Engineering		Electrical and Electronic, Informatics, Applied Physics
		Affiliated Institutions	Center for Infrastructure Asset Management Technology and Research
			Applied Meteorological Research Center
		Joint Research Course	Supporting and Development Center for Technology Education

Applied Biological Sciences (2 Courses, 1 Department)	Course of Applied Life Science	Sub-Courses	Molecular Life Science, Life Science for Food
	Course of Agricultural and Environmental Science		Plant Production, Animal Science, Environmental Science and Ecology
	Joint Department of Veterinary Medicine	Affiliated Institutions	Gifu Field Science Center
			Animal Medical Center
			Research Center for Wildlife Management <Endowed Research Division: Wild Animals Damage Prevention Division (Gifu Prefecture)>
			Center for the Development and Promotion of Joint Veterinary Education
			Education and Research Center for Food Animal Health



Faculty of Education



Faculty of Regional Studies



School of Medicine /
University Hospital



Faculty of Engineering /
Faculty of Applied Biological Sciences

■ Graduate School

Education	Professional Degree Program	Teacher Education Course	Courses	School Administrators Prepare Course, Education Practice Development					
	Master's Program	Supporting Psychological Development Course	Courses	Clinical Psychology, School Psychology, Special Needs Education					
		Major in Subject-Integrated Education		Language and Social Studies, Science, Arts and Physical, Curriculum Development					
Regional Studies	Master's Program	Policy Studies	Areas	Socioeconomics, Public Administration and Policy, Environmental Studies					
		Cultural Studies		Society, Culture					
Medicine	Doctoral Program	Medical Sciences	Divisions	Molecule and Structure	Courses	Cell Signaling, Pharmacology, Microbiology, Parasitology and Infection, Gene and Development, Diabetes and Endocrinology, Pediatrics, Informative Clinical Medicine, Anatomy, Molecular Pathobiochemistry, Molecular Design and Synthesis, Cardiology, Respiriology, General and Cardiothoracic Surgery, Orthopaedic Surgery, Dermatology, Urology, Anesthesiology and Pain Medicine, Oral and Maxillofacial Surgery			
				Disease Control					
				Neuroscience					
				Tumor Control					
				Medical Management					
	Master's Program	Nursing Science	Divisions	Nursing Education	Courses	Specialty Areas	Nursing Education, Biological Systems		
				Nursing Practice			Maternal and Child Health Nursing	Maternal Nursing, Child Health Nursing	
							Adult Nursing	Acute Care Nursing, Chronic Care Nursing	
							Community Health Care Nursing	Community Health Nursing, Mental Health Nursing, Gerontological Nursing	
	Master's Program	Health Professions Education	Divisions	Health Professions Training and Development, Health Professions Program Development, Biomedical Ethics and Social Medicine Education, General Internal Medicine, Regional Medicine Education, Physician Clinical Training					
			Department of Integral Medicine	Cardiovascular and Respiriology Advanced Medicine (Gifu Welfare Federation of Agricultural Cooperatives), Division for Regional Cancer Control (Gifu Welfare Federation of Cooperatives),Frontier Science for Surgical Oncology (Yakult Honsha Co., Ltd.), Division for Regional Cancer Control (Gifu Welfare Federation of Agricultural Cooperatives), Regional Medicine and Musculoskeletal Science (Sekigahara Town), Advanced Joint Reconstructive Surgery (KYOCERA Medical Corporation, Biomet Japan, Inc.), Department of Advanced Image Development (JA Gifu, Koseikai Health System, Gifu Prefectural General Medical Center), Department of Perioperative Female Doctor Activity Support (JA Gifu), Department of Minimally Invasive Cancer Therapy (JA Gifu, Ono Pharmaceutical Co., Ltd., Chugai Pharmaceutical Co., Ltd.), Department of community-based Radiology (Japanese Red Cross Takayama Hospital)					
			Joint Research Course	Phage Biologics Research Course (Astellas Pharma Inc.)					
Engineering	Doctoral Program	Department of Engineering Science							
		International Joint Department of Integrated Mechanical Engineering between Indian Institute of Technology Guwahati and Gifu University							
		International Joint Department of Materials Science and Engineering between National University of Malaysia and Gifu University							
Natural Science and Technology	Master's Program	Department of Life Science and Chemistry	Courses	Medical Chemistry and Biotechnology, Applied Chemistry and Biotechnology, Molecular Life Science, Life Science for Food					
		Department of Agricultural and Environmental Science		Plant Production, Animal Science, Environmental Science and Ecology					
		Department of Civil and Environmental Engineering		Environment Studies, Disaster Reduction Studies					
		Department of Materials Science and Proccession		Materials Chemistry, Materials Processing					
		Department of Intelligence Science and Engineering		Intelligent Mechanical Engineering, Informatics, Applied Mathematics and Physics					
		Department of Energy Engineering		Energy Conversion, Electrical and Energy System Engineering					
		International Joint Department of Food Science and Technology between Indian Institute of Technology Guwahati and Gifu University							
Joint Graduate School of Veterinary Sciences	Doctoral Program	Joint Major of Veterinary Sciences	Department	Basic Veterinary Science, Pathogenetic/Applied Veterinary Science, Clinical Veterinary Science					
United Graduate School of Agricultural Science	Doctoral Program	Department of Science of Biological Production	Major Chairs	Plant Production & Management, Animal Resource Production					
		Department of Science of Biological Environment		Agricultural & Environmental Engineering, Management of Biological Environment					
		Department of Science of Biological Resources		Utilization of Biological Resources, Smart Material Science, Regulation of Biological Functions					
		International Joint Department of Food Science and Technology between Indian Institute of Technology Guwahati and Gifu University							
United Graduate School of Drug Discovery and Medical Information Sciences	Doctoral Program	Medicinal Sciences	Research Fields	Biological Molecular Sciences, System Biological Technologies					
			Endowed Course	Koto Cedar Laboratory					
			Joint Research Course	Department of Multi-stage polymerized fermentation and Natural product functionality (NIHON SHIZEN HAKKO CO. LTD.)					
		Medical Information Sciences	Research Fields	Biomedical Informatics, Biofunctional Control					

■ Library

Library Collections

As of April 1, 2020

Classification	Books (volumes)			Periodicals (titles)		
	Japanese	Foreign	Total	Japanese	Foreign	Total
University Library	531,434	218,133	749,567	9,718	3,877	13,595
Medical Library	82,151	86,347	168,498	1,523	1,805	3,328

About 7,000 titles of electronic-journals (Elsevier, Springer, etc.), about 7,600 titles of electronic books such as NetLibrary, and Academic database (Scopus, SciFinderScholar, etc.) are available.



Reception Counter & Entrance Gate

Opening Hours / Closing Days

Classification	Monday - Friday	Saturday	Sunday, National Holiday (examination periods only)	Closing Days		
University Library	9:00~21:30 * 1)	10:00~18:00	10:00~18:00	Sundays, National Holidays * 2)	Summer Holidays(Aug.13~14) Winter Holidays(Dec.28~Jan.4)	Some Saturdays during vacation periods
Medical Library	8:30~20:00 * 1)	10:00~18:00		Sundays, National Holidays	Summer Holidays(Aug.13~14) Winter Holidays(Dec.28~Jan.4)	

Note: The closing days or times are subject to change * 1) The opening hours may be shortened on weekdays (see the website for opening hours) * 2) Examination periods excepted

Utilization (2019)

Classification		Staff	Students	Visitors	Total
Number of Users	University Library	6,266	145,571	2,929	177,243
	Book Collection Area and Others				
	Learning Commons * 1)		22,477		
	Medical Library	5,567	33,748	3,654	42,969
Total					220,212
Number of Circulation	University Library	4,544	37,916	695	43,155
	Medical Library	968	9,530	13	10,511
	Total	5,512	47,446	708	53,666
Photo Copying Service	University Library	2,495		780	3,275
	Medical Library	1,138		1,702	2,840
	Total	3,633		2,482	6,115

Note: University Library opens 271 days and Medical Library opens 282 days.

* 1) "Learning Commons" is a space for student study support (individual or group) equipped with movable desks and chairs, and Wi-Fi.



University Library

■ Archive Core

Archive Core was established in the University Library in commemoration of Gifu University's 70th Anniversary in June 2019. It comprises two exhibition spaces: "PRAETER" and "FUTURUM."

Materials in Storage

Faculty of Education	World's oldest printed scripture, "Hyakuman-to (Million Tower), body Armor of the Ogawa Family
Faculty of Applied Biological Sciences	Silkworm anatomy model, illustration of paddy insect pest
Faculty of Engineering	Plasma chemical vapor deposition (CVD), flexible solar battery
School of Medicine, University Hospital	Anatomical drawing by Toshio Tange, Japanese painting by Tadashi Moriya
Faculty of Regional Studies	Local government records/references, local history documents (stored by the Center for Local Archives)

Note: In addition to the above items, Archive Core houses archeological papers (over 90,000), artworks (approx. 60 pictures, paintings, etc.), stuffed animals, samples of eggs (approx. 1,100) and anatomical drawings (approx. 470).



Stuffed animals displayed at PRAETER

■ University Hospital

The University Hospital provides highly advanced medical care as the sole university hospital and only special functioning hospital in Gifu Prefecture. It has also been designated as a specialized hospital for diseases that are difficult to treat, such as cancer, hepatitis, AIDS, etc. The Hospital places particular emphasis on advanced medical care for five categories of major disease (cancer, cardiac infarction, stroke, diabetes, and psychiatric illness) and on five medical services (emergency medical care, disaster medical care, rural and community medical care, perinatal care, and pediatric care) viewed as high priority by the Japanese government. In March 2018, the Hospital was additionally designated as a nuclear emergency core hospital, and an allergy disease core hospital in May 2018. In addition, it is also served as an advanced emergency medical service center and a primary cerebral apoplexy center.

In October 2018, the Hospital was newly designated as a base for human cancer genomic medicine. In the Department of Human Cancer Genome of the Cancer Center, the state-of-the-art cancer treatments have been introduced which include hereditary cancer treatments, pioneering treatments established through clinical and therapeutic trials, and also hereditary cancer care in collaboration with the Genomic Disease and Clinical Genetics Center. The Hospital has built an extensive network with other cancer hospitals and clinics within Gifu Prefecture, playing a significant role as a hub for cancer treatments that facilitates regional specialization of medical functions and fostering specialists in genomic medicine. The ultimate goals of the Hospital are to meet the needs of society and respond to ever-growing demands for better medical care from the public. With the safety and security of people and society as our utmost priority, the University Hospital remains committed to medical safety, acceleration of clinical research, global human resource development and providing advanced, quality medical treatment for all as the sole special functioning hospital in the region.

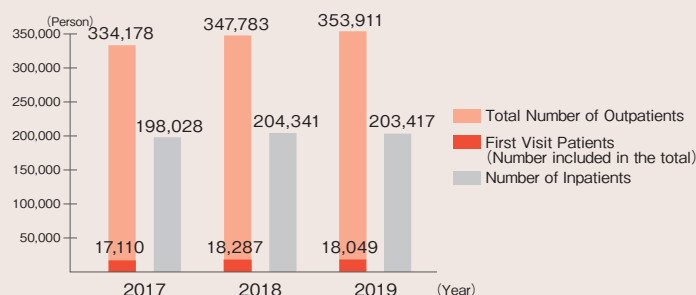


University Hospital

Number of Patients (2019)

Inpatients	Total Number of Patients	203,417	Outpatients	First Visit Patients	18,049
	Average per Day	555.78		Revisit Patients	335,862
	Bed Occupancy Rate	90.5%		Total	353,911
	Operation Days	366		Average per Day Days for Outpatient treatment	242

Changes in the Number of Patients



Clinical Department and Number of Beds

As of April 1, 2020

Classification	Number of Beds	Classification	Number of Beds
Internal Medicine I	63	Oto-Rhino-Laryngology	29
Hematology		Plastic & Reconstructive Surgery	
Internal Medicine II		Dermatology	13
Internal Medicine III	21	Urology	21
Neurology	19	Psychiatry	37
General Internal Medicine	12	Pediatrics	28
Cardiovascular Surgery	103	Radiology	1
General Thoracic Surgery		Anesthesiology & Pain Medicine	1
Digestive Surgery		Dentistry, Oral & Maxillofacial Surgery	8
Breast Surgery	32	Advanced Critical Care Center	29
Obstetrics & Gynecology		Intensive Care Unit	6
Orthopaedic Surgery	49	Neonatal Intensive Care Unit	12
Neurosurgery	38	Common	26
Ophthalmology	14	Total	613

Central Clinical Facilities		
Division of Clinical Laboratory	Center for Medical Cooperation	Autopsy Imaging Center
Operation Division	Center for Nutrition Support & Infection Control	Stroke Center
Radiology Services	Cancer Center	Genomic Disease and Clinical Genetics Center
Supplies Division	AIDS Clinical Center	Bed Control Center
Division of Transfusion Medicine & Cell Therapy	Center for Liver Disease	Preoperative Control Center
Pathology Division	Rehabilitation Division	Admission Center
General Medicine	Center of Reproductive and Perinatal Care	Respiratory Center
Medical Information Division	Medical Instrument Center	Allergy Center
Endoscopy Center	High-level Imaging Diagnosis Center	International Medical Center
Advanced Critical Care Center	Neonatal Intensive Care Unit	Dietary Management Division

Patient Safety Division
Division of Pharmacy
Division of Nursing
Medical Record Management Division
Center for Clinical Training & Career Development
Training Center for Nurse Designated Procedures
The Minimally Invasive Surgery Center for Training & Education
Innovative & Clinical Research Promotion Center
Clinical Ethics Division
"Sawayaka" Quality Service Promotion Division

■ Animal Medical Center

The Animal Medical Center is the only facility dedicated to veterinary education, research, and treatment in the Chubu region. In response to the increasing need for veterinary practices in recent years and to provide advanced medical treatment that pet owners expect, a new clinical ward and Linac Center were built onto the Animal Medical Center in April 2010 as well as the MRI Ward in April 2012. The Center's new clinical ward has private consultation rooms, a positive pressure surgery room which can also be used for brain surgery, and an intensive-care unit. It is an advanced facility equipped with electronic medical charts and diagnostic imaging units. The Linac Center was the first of its kind at a Japanese national university to have a high-energy radiation LINAC (linear accelerator) treatment system, and the MRI Ward was likewise the first to have an MRI (magnetic resonance imaging) system. The Center's specialties are internal medicine, surgery, oncology, anesthesiology and neurology for companion animals, and farm animal medicine. In one year, about 8,000 cases are being treated at the departments of internal medicine, surgery, oncology, anesthesiology and neurology from referrals from private hospitals in the Tokai, Kinki and Hokuriku regions. At the same time, the department of farm animals plays an important role in the medical care of farm animals in Gifu area.



Ward and Room

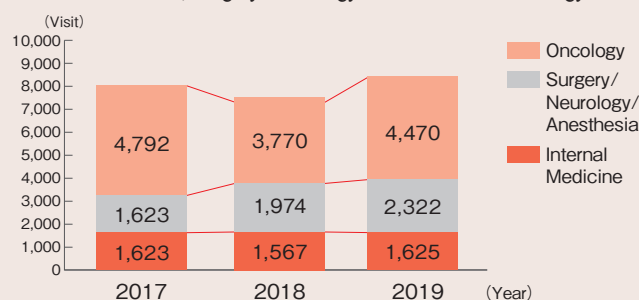
As of April 1, 2020

Name	Floor Space(m ²)	Facility Information
Clinical Ward	911	1 st floor: 7 Consultation Rooms, Ultrasonography Room, Treatment Room, Examination Room 1, Pharmacist, Reception and Office 2 nd floor: Positive Pressure Surgery Room, General Operating Room (3 operating tables), Operation Preparation Room, Intensive-Care Unit, Recovery Room, 2 Nap Rooms
Linac Center, MRI Ward	327.55	Linac Room, MRI Room, Control Room
Main Building (1st floor)	438	Endoscope & Laparoscope Room, Dental Room, X-ray and Image Analysis Room, Examination Room 2, Director's Room/Counseling Room, Administrative Office
CT Ward	47	X-ray CT Imaging Room, Control Room
Animal Management & Care Ward	260	Inpatients Rooms for Sick Animals, Animal Blood Donation Room, Medical Office
Total	1,983.55	

Total Number of Clinical Visits by Animal Type

Year	Companion Animals				Farm Animals					Total
	Dogs	Cats	Others	Subtotal	Cattle	Horses	Pigs	Sheep/Goats	Subtotal	
2017	6,781	1,243	0	8,024	6	10	10	2	28	8,052
2018	6,056	1,248	4	7,308	2	1	2	1	6	7,314
2019	6,657	1,756	1	8,414	2	1	0	0	3	8,417

Changes in the Total Number of Clinical Visits to the Department of Internal Medicine, Surgery/Neurology/Anesthesia and Oncology



■ Collaboration Center for Medical Education

Medical Education Development Center (MEDC)

The Center was established in 2001 as a collaboration center for medical education to promote the development of human resources who can contribute to medical education and collaborative and joint research with medical education institutions both in Japan and overseas. Initially accredited in April 2010, the Center is the only collaboration center for medical education accredited by the Ministry of Education, Culture, Sports, Science and Technology. The Center was reaccredited for another five years in April 2020. As one of its programs, the Center conducts a Medical Education Seminar and Workshop four times a year (three times in AY 2020). This event has won high praise as a nation-wide program for Faculty Development. The Center also launched a program to educate leaders in medical education at medical schools and educational institutions for health professionals. MEDC fellows/associates certificates will be given to the graduates of this course.

The Tutorial Education Division is working to spread and improve small-group active problem-based learning (PBL). The Virtual Skill Division is striving to develop communication-based education and simulation-based education that makes use of simulated patients. Efforts are also focused on education of professionalism, outcome-based medical education, computer-supported education, portfolio assessment systems, international exchanges, medical English education, Master of Health Professions Education and doctoral (PhD) programs for medical education.

[Tutorial Education Division, Virtual Skill Division]



Tutorial Education



Medical Communication Practice



Seminar and Workshop for Medical Education



Clinical Skills Education

■ Centers for Education and Research Activity



■ Satellite Campus / Seminar House

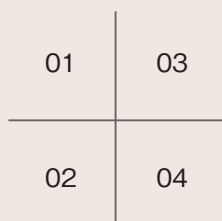
Gifu University Satellite Campus [Opened in October 2012]
(4th floor of the East Tower at Gifu Skywing 37, 6-31 Yoshinomachi, Gifu City)

The Gifu University Satellite Campus, directly connected to JR Gifu Station, has two multipurpose rooms that can be used for classes, seminars, lectures and research presentations, "Learning Commons" where students can study on their own, two meeting rooms for business consulting, and other purposes.

The Gifu University Satellite Campus can be used by Gifu University students, faculty and staff members, Gifu University graduates, and local residents. It is a center for the promotion of education and research at Gifu University, student activities, contributions to the community, and the dissemination of information.



Gifu Skywing 37



01 River Basin Research Center

The River Basin Research Center at Gifu University has been developing "River Basin Sciences," an academic research field for conservation and sustainable development of river basin. The Center is the main institution for the study of environmental sciences at Gifu University and operates in conjunction with universities, research institutes, other relevant organizations, and regional communities inside and outside Japan. Specifically, the Center carries out analyses of natural and artificial phenomena, including observation of plants, waters, and soils found in river basin. It also conducts academic research and technological development for river basin environment conservation, and for disaster prevention and mitigation activities.

[Division of Forest Function, Division of Water and Material Dynamics, Takayama Field Station, Promotion Office of Gifu University Rearing Program for Basin Water Environmental Leaders, Joint Research Office, Office for Promotion of Regional Collaboration]

02 Center for Collaborative Study with Community

In order to develop regionally-focused human resources who are most needed to play leading roles and address community issues, the Center for Collaborative Study with Community was established as a supporting organization to implement the University Center of Community (COC) Programs for 2013 of the Ministry of Education, Culture, Sports, Science and Technology. Aiming for promotion of activities in cooperation with the community and community development, the COC Program has three major objectives: "Fostering next-generation regional leaders," "Promotion of region-oriented education" and "Formation of places for discussions of all walks of life (Gifu Future Center)." Gifu University was also selected by the Ministry to implement COC-development type, COC+ in 2015 and is embarking on development of human resources who settle down in regions and contribute to revitalization of local industry.

03 Organization for Promotion of Globalization Center for Japanese Language and Culture

The Center for Japanese Language and Culture educates international students in Japanese language and culture and Japanese students in international understanding. The center plays an important role in the university's internationalization initiatives with a special focus on the promotion of intercultural exchange among students. To this end, the center provides cross-cultural communication programs in general education courses for both Japanese and international students. The Exchange Lounge in the center serves as a venue for interchange between Japanese and international students; a wide range of activities including learning, academic support by student monitors, and information gathering and distribution for studying abroad are organized there.

04 Health Administration Center

Health Administration Center has main roles in the health promotion and development of university students and faculties/staffs based on School Health and Safety Act and Industrial Health and Safety Act.

The center provides annual health checkups and health counseling/support based on the results for all students and faculties/staffs. The center also provides first aid services, health advice/education, health enlightenment activities, and so on. The center implements campus health plans and offers a wide range of services.

The center conducts epidemiological analysis relating students and faculties/staffs health issues, which contributes to development of health policy on not only Gifu University campus but also other universities in Gifu Prefecture.

Gifu University Hayano Residence Seminar House [Opened in April 2013] (1777 Hiruicho, Ogaki City)

The Gifu University Seminar House, which is along Kyu-Nakasendo (a route from the Edo period) in Hiruicho, Ogaki City is the former residence of Dr. Saburo Hayano, the 7th president of Gifu University.

It has a seminar room for classes and lectures, an exhibition room where students' work and documents related to regional history and culture are displayed, and a meeting room that can be used as a center for fieldwork.

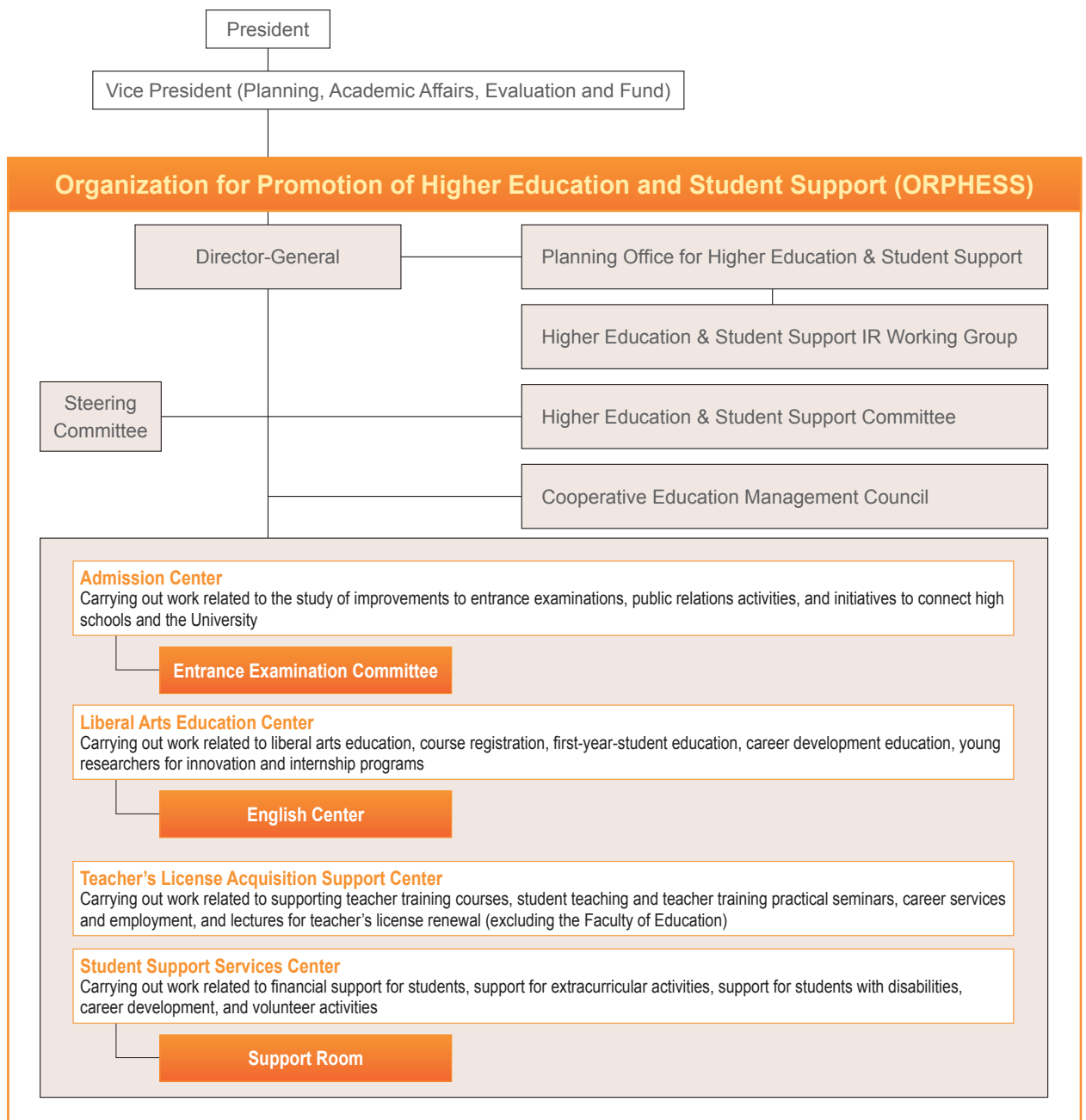


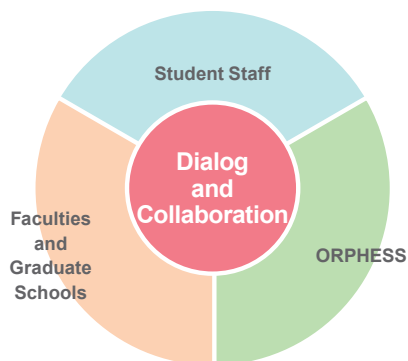
Hayano Residence Seminar House

Education

■ Organization for Promotion of Higher Education and Student Support

[Organization Chart]





ORPHESS/faculty matrix-type organization

A structure designed to seamlessly combine specialized education offered by undergraduate faculties with a core education that is overseen by ORPHESS

Applying the results of individual optimization to facilitate overall optimization

Application of results accumulated by faculties and other entities to the entire university from the standpoint of overall optimization

Reforming governance and transforming the organizational culture

Consensus-building through dialog and collaboration and the facilitation of reform

A well-organized educational environment

The University's single, integrated campus as a venue for daily dialog and collaboration

ORPHESS is also home to the Planning Office for Higher Education & Student Support which plans campus-wide educational activities, evaluates and analyzes educational effectiveness, and operates the educational quality assurance system. ORPHESS also includes four Divisions—Admission Center, Liberal Arts Education Center, Teacher's License Acquisition Support Center, and Student Support Services Center to facilitate planning and implementation. The English Center was established in 2018 to coordinate and promote English education at Gifu University.

The principal operational duties of ORPHESS are as follows:

- (1) Promoting and improving University-wide education
- (2) Planning and implementing general education
- (3) Planning and implementing student admissions, learning support, support for student life, career support, and support for other aspects of University life
- (4) Planning and implementing regional educational partnerships
- (5) Supporting teacher training course and promoting partnerships involving teacher education
- (6) Evaluating and analyzing educational effectiveness
- (7) Planning and implementing education through partnerships with other organizations
- (8) Carrying out other duties as necessary in order to achieve the ORPHESS's goals

Gifu University strives to foster a carefully defined set of fundamental abilities in students through all educational activities, together with specialized skills on the part of each faculty and graduate school in accordance with its Diploma Policy, Curriculum Policy, and Admission Policy, which collectively govern all of the University's activities. To encourage each student to take a proactive approach to his or her education, we are committed to (1) enhancing structures that support learning from admission to graduation, as well as structures that support student life; (2) continually verifying that our undergraduate and graduate programs accord with our three aforementioned primary policies and striving to improve the University's structures; and (3) increasing the University's overall educational capabilities so as to more effectively maximize each faculty's potential. To achieve these goals, it is essential that we take a broad view of the entire University's educational activities when planning programs, working to improve each faculty and graduate school's educational activities, and implementing mechanisms to support student learning. The Organization for Promotion of Higher Education and Student Support (ORPHESS) is characterized by a commitment to bring faculties, graduate schools, and student staff together in dialog and collaboration in order to achieve the goals described above. ORPHESS was launched in December 2013 with staff members drawn from a variety of departments at the University.

■ Number of Students

Undergraduate

As of May 1, 2020

Faculty / School	Course	Admission Capacity	3rd Year Mid-Course Entrants	Enrollment						Total
				1 st year	2 nd year	3 rd year	4 th year	5 th year	6 th year	
Education		250		260 (142)	259 (148)	256 (152)	270 (160)			1,045 (602)
Regional Studies		100	10	107 (67)	106 (65)	116 (64)	132 (83)			461 (279)
				3 (1)	2 (0)	3 (1)	2 (1)			10 (3)
School of Medicine	Medical Course	110		106 (30)	114 (39)	113 (30)	113 (36)	109 (39)	105 (32)	660 (206)
	Nursing Course	80		2 (1)	2 (1)	1 (1)				5 (3)
				81 (77)	78 (76)	86 (82)	83 (81)			328 (316)
Engineering		510	30	542 (85)	549 (87)	562 (103)	617 (93)			2,270 (368)
				2 (0)	6 (3)	8 (3)	13 (1)			29 (7)
Applied Biological Sciences	Course of Applied Life Science	160	10	168 (95)	174 (109)	187 (93)	177 (94)			706 (391)
	Course of Agricultural and Environmental Science			2 (1)	1 (1)	2 (1)	1 (0)			6 (3)
	Joint Department of Veterinary Medicine*1	30		31 (22)	32 (21)	31 (18)	32 (17)	35 (23)	31 (17)	192 (118)
Total Number of Undergraduate Students		1,240	50	1,295 (518)	1,312 (545)	1,351 (542)	1,424 (564)	144 (62)	136 (49)	5,662 (2,280)
				9 (3)	11 (5)	14 (6)	16 (2)	0 (0)	0 (0)	50 (16)

The number of "Enrollment" includes international students. () indicates the number of female students, and the lower row shows the number of international students.

* 1 "Enrollment" for the Joint Department of Veterinary Medicine includes the number of Veterinary Medicine Course students before renaming the course.

Graduate

Professional Degree Program (Teacher Education Course)

As of May 1, 2020

Graduate School	Program	Admission Capacity	Enrollment			Degree
			1 st year	2 nd year	Total	
Education	Professional Degree Program	25	27 (13)	30 (13)	57 (26)	Master of Education (professional)

Master's Program

As of May 1, 2020

Graduate School	Program	Admission Capacity	Enrollment			Degree
			1 st year	2 nd year	Total	
Education	Master's Program	44	44 (22)	52 (23)	96 (45)	Master of Education
Regional Studies	Master's Program	20	12 (8)	19 (13)	31 (21)	Master of Regional Studies
			10 (7)	15 (11)	25 (18)	
Medicine	Master's Program	14	13 (7)	8 (8)	21 (15)	Master of Health Professions Education, Master of Nursing
Engineering	Master's Program			3 (0)	3 (0)	Master of Engineering
Natural Science and Technology	Master's Program	375	433 (91)	467 (107)	900 (198)	Master of Applied Biological Sciences or Engineering
			32 (12)	44 (16)	76 (28)	

Doctoral Program

As of May 1, 2020

Graduate School	Program	Admission Capacity	Enrollment								Degree		
			1 st year		2 nd year		3 rd year		4 th year			Total	
Medicine	Doctoral Program	47	44	(12)	29	(8)	25	(8)	95	(30)	193	(58)	Ph.D. in Medical Sciences
	Doctoral Program		2	(1)	2	(1)			2	(1)	6	(3)	Ph.D. in Regeneration and Advanced Medical Sciences
Engineering	Doctoral Program	27	22	(3)	35	(11)	48	(10)			105	(24)	Ph.D. in Engineering
			12	(2)	15	(6)	24	(8)			51	(16)	
Joint Graduate School of Veterinary Sciences	Doctoral Program	6	4	(0)	5	(0)					9	(0)	Ph.D. in Veterinary Sciences
			2	(0)	1	(0)					3	(0)	
United Graduate School of Agricultural Science	Doctoral Program *1	20	22	(5)	24	(8)	50	(20)			96	(33)	Ph.D. in Agricultural Science
			6	(2)	16	(7)	24	(13)			46	(22)	
United Graduate School of Veterinary Sciences	Doctoral Program					18	(7)	33	(10)	51	(17)	Ph.D. in Veterinary Sciences	
						4	(1)	8	(4)	12	(5)		
United Graduate School of Drug Discovery and Medical Information Sciences	Doctoral Program *1	6	5	(0)	6	(2)	15	(5)			26	(7)	Ph.D. in Engineering, Medical Sciences, or Pharmaceutical Science
					1	(1)					1	(1)	
Total Number of Graduate Students		584									1,595	(449)	
											223	(95)	

The number of "Enrollment" includes international students. () indicates the number of female students, and the lower row shows the number of international students.

*1 United Graduate School of Agricultural Science and United Graduate School of Drug Discovery and Medical Information Sciences have three-year Doctoral Program only.

Number of Students of the United Graduate Schools by Participating University

As of May 1, 2020

United Graduate School	Enrollment					Total
	Participating University	1 st year	2 nd year	3 rd year	4 th year	
Agricultural Science	Shizuoka University	4 (1)	8 (3)	9 (3)		21 (7)
	Gifu University	18 (4)	16 (5)	41 (17)		75 (26)
Veterinary Sciences	Obihiro University of Agriculture and Veterinary Medicine			1 (1)	9 (4)	10 (5)
	Iwate University				7	7
	Tokyo University of Agriculture and Technology			4	10 (4)	14 (4)
	Gifu University			13 (6)	7 (2)	20 (8)
Total		22 (5)	24 (8)	68 (27)	33 (10)	147 (50)

The number of "Enrollment" includes international students. () indicates the number of female students.

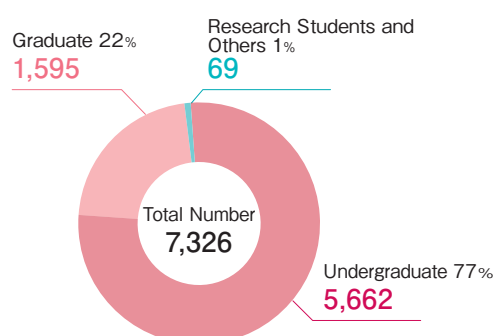
Research Students / Non-Degree-Seeking Students / Auditing Students

As of May 1, 2020

	Research Students	Special Research Students	Non-Degree-Seeking Students	Auditing Students	Special Auditing Students	External Training Course for In-service Teachers	International Students in Japanese Language and Culture Studies Course	Total
Faculty of Education	4 (4)		3		2 (2)			9 (6)
Faculty of Regional Studies	7 (7)				1 (1)			8 (8)
School of Medicine	8							8
Faculty of Engineering	8 (7)							8 (7)
Faculty of Applied Biological Sciences	6 (5)							6 (5)
Graduate School of Education	1 (1)	1 (1)		1	1 (1)			4 (3)
Graduate School of Regional Studies								
Graduate School of Medicine		1 (1)	2					3 (1)
Graduate School of Engineering								
Graduate School of Natural Science and Technology	6 (5)	1			1 (1)			8 (6)
Joint Department of Veterinary Medicine		2 (1)						2 (1)
United Graduate School of Agricultural Science		2 (2)						2 (2)
Organization for Promotion of Higher Education and Student Support				2				2
Center for Japanese Language and Culture, Organization for Promotion of Glocalization					3 (3)		6 (6)	9 (9)
Gifu Network University Consortium*								
Total	40 (29)	7 (5)	5	3	8 (8)		6 (6)	69 (48)

* Gifu Network University Consortium is the association of universities consisted of Gifu Prefecture and 22 universities in the prefecture. Students are able to take courses at other universities, and the earned credits are transferable under the credit transfer system. The figure in brackets indicates the number of international students and is included in the total.

Number of Students



Gifu University Faculty of Education Affiliated Compulsory School System (Elementary-Junior High)

As of May 1, 2020

Education Course	Class	Number of Classes	Admission Capacity	Total Number of Students
First Course (Elementary)	Regular Class	18	96	619
	Special Needs Class	3	3	15
Second Course (Junior High)	Regular Class	11	105	421
	Special Needs Class	3	6	20
Total				1,075

■ Applicants and Admissions

Undergraduate

2020

Faculty/School	1 st year Students					3 rd year Mid-Course Entrants				
	Admission Capacity	Applicants	Examinees	Successful Applicants	Entrants	Admission Capacity	Applicants	Examinees	Successful Applicants	Entrants
Education	250	1,246	790	285	260	-	-	-	-	-
Regional Studies	100	457	311	115	107	10	44	38	12	11
School of Medicine	Medical Course	110	1,111	526	107	-	-	-	-	-
	Nursing Course	80	317	199	85	-	-	-	-	-
Engineering	510	2,357	1,611	574	528	30	109	100	54	37
Applied Biological Sciences	Course of Applied Life Science Course of Agricultural and Environmental Science	160	479	339	189	10	36	35	12	9
	Joint Department of Veterinary Medicine	30	122	112	32	-	-	-	-	-
Total	1,240	6,089	3,888	1,387	1,277	50	189	173	78	57

* The number of applicants to the School of Medicine does not include the examinees who failed in the first screening process conducted at the general examination and the latter half of the examination schedule.

* The number of international students included.

Graduate School

2020

Graduate School		Admission Capacity	Applicants	Examinees	Successful Applicants	Entrants
Education	Professional Degree Program (Teacher Education Course)	25	31	31	30	27
	Master's Program	44	72	70	58	44
Regional Studies	Master's Program	20	15	15	13	12
Medicine	Nursing Sciences (Master's Program)	8	8	8	7	7
	Health Professions Education (Master's Program)	6	14	14	6	6
	Medical Sciences (Doctoral Program)	47	39	39	38	38
Engineering	Doctoral Program	27	22	21	21	15
Natural Science and Technology	Master's Program	375	528	508	456	418
Joint Graduate School of Veterinary Sciences	Doctoral Program	6	3	3	2	2
United Graduate School of Agricultural Science	Doctoral Program	20	20	20	18	18
United Graduate School of Drug Discovery and Medical Information Sciences	Doctoral Program	6	4	4	4	4
Total		584	756	733	653	591

* The number of newly-enrolled students are as of April 2020. (The number of newly-enrolled students in October, 2020: 5 at United Graduate School of Agricultural Science)

* The number of international students included.

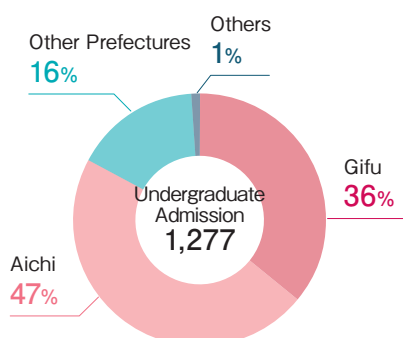
Undergraduate Admission by Locations of High Schools (The number of 3rd year Mid-Course Entrants excluded.)

2020

Faculty/School	Gifu	Aichi	Mie	Kyoto	Shizuoka	Osaka	Shiga	Tokyo	Other Prefectures	* Others	Total
Education	152	77	4	0	4	1	2	1	19	0	260
Regional Studies	56	41	0	1	0	0	1	1	4	3	107
School of Medicine	71	69	2	4	2	7	1	5	21	2	184
Engineering	143	313	12	3	8	3	11	2	30	3	528
Applied Biological Sciences	42	94	4	6	3	5	3	3	36	2	198
Total	464	594	22	14	17	16	18	12	110	10	1,277

* "Others" include Certificate for Students Achieving the Proficiency Level of Upper Secondary School Graduates, foreign schools, etc.

* The number of international students included.



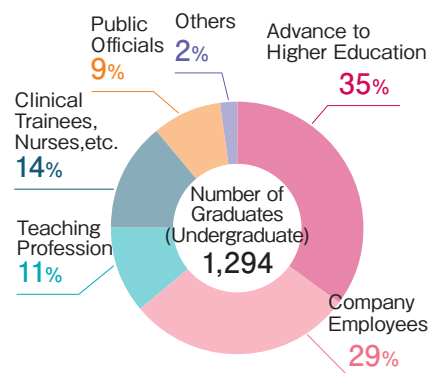
Number of Graduates (Undergraduate) / Career Paths

Career Paths of Graduates (Undergraduate)

Number of Graduates (Undergraduate)

Faculty/School		2019	Cumulative Total
Education		247	18,707
Regional Studies		125	2,283
School of Medicine		181	5,557
Engineering	Day Course	542	24,824
	Evening Course		847
Applied Biological Sciences		199	13,563 *
Total		1,294	65,781

* Graduates of Faculty of Agriculture included.



Career Paths of 2019 Graduates

Career Paths

As of May 1, 2020

Faculty/School Classification	Education	Regional Studies	School of Medicine		Engineering	Applied Biological Sciences	Total
			Medical	Nursing			
Graduates	247 (152)	125 (76)	108 (24)	73 (71)	542 (91)	199 (104)	1,294 (518)
Advance to Higher Education	40 (20)	4 (3)		1 (1)	331 (35)	83 (37)	459 (96)
Company Employees	201 (128)	116 (70)		72 (70)	196 (53)	110 (65)	695 (386)
Adult Students (Staying in Workforce)						1	1 (0)
Clinical Trainees			107 (24)				107 (24)
Others	6 (4)	5 (3)	1		15 (3)	5 (2)	32 (12)
Total	247 (152)	125 (76)	108 (24)	73 (71)	542 (91)	199 (104)	1,294 (518)

Employment Status by Industry

Faculty/School Field of Business	Education	Regional Studies	School of Medicine		Engineering	Applied Biological Sciences	Total
			Medical	Nursing			
Agriculture, Forestry and Fisheries						6 (3)	6 (3)
Mining and Quarrying							0 (0)
Construction		2 (2)			22 (5)	2 (1)	26 (8)
Manufacturing	8 (3)	13 (8)			90 (22)	29 (19)	140 (52)
Utility	1 (1)	1			5 (2)	1 (1)	8 (4)
Information and Communications	12 (9)	22 (12)			30 (11)	3 (3)	67 (35)
Transport and Postal Services	3 (1)	5 (5)			2		10 (6)
Wholesale and Retail Business	9 (7)	11 (6)			2 (1)	3 (2)	25 (16)
Finance and Insurance	4 (3)	9 (5)			1	2	16 (8)
Real Estate Business	2 (2)						2 (2)
Scientific Research, Professional and Technical Services		3 (3)			3 (2)	26 (17)	32 (22)
Accommodation and Eatery		3 (2)				2 (2)	5 (4)
Life-related Services and Entertainment		3 (2)				2	5 (2)
School Education	133 (79)	1		3 (3)	4 (1)	1	142 (83)
Education Support Business	7 (6)				2	1 (1)	10 (7)
Medical, Health Care and Welfare		2		69 (67)		1 (1)	72 (68)
Social Insurance, Social Welfare and Care Services		1 (1)				1	2 (1)
JA, Post Office, Co-op	1 (1)	3 (2)				1 (1)	5 (4)
Religion, Other Services	4 (2)	1			2 (1)	1	8 (3)
State Government Services	1 (1)	5 (4)			9 (4)	5 (3)	20 (12)
Local Government Services	16 (13)	31 (18)			23 (3)	23 (11)	93 (45)
Others					1 (1)		1 (1)
Total	201 (128)	116 (70)	0 (0)	72 (70)	196 (53)	110 (65)	695 (386)

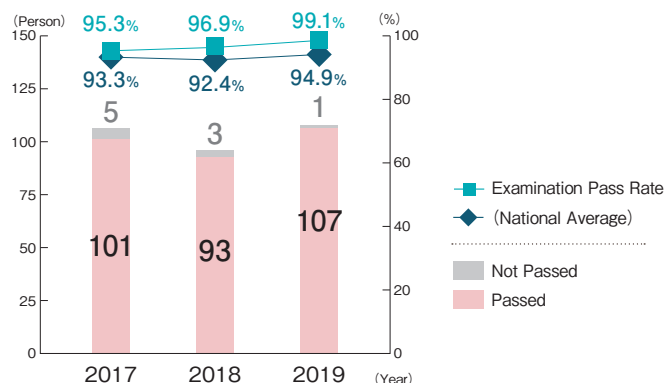
() indicates the number of female graduates.

Medical Licensing Examination Pass Rate / Teacher Employment Rate

National Examination for Medical Practitioners

	2017	2018	2019
Examinees	106	96	108
Passed	101	93	107
Not Passed	5	3	1
Examination Pass Rate	95.3%	96.9%	99.1%
(National Average)	93.3%	92.4%	94.9%

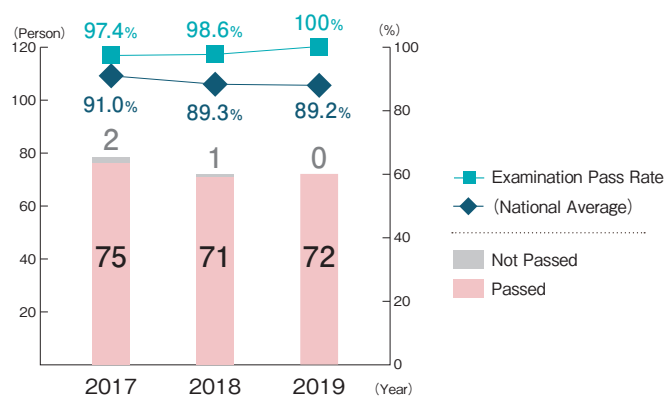
* New graduates only



National Nursing Examination

	2017	2018	2019
Examinees	77	72	72
Passed	75	71	72
Not Passed	2	1	0
Examination Pass Rate	97.4%	98.6%	100.0%
(National Average)	91.0%	89.3%	89.2%

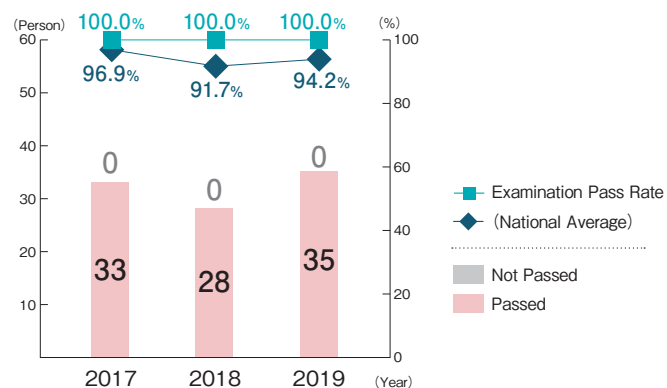
* New graduates only



National Veterinary Examination

	2017	2018	2019
Examinees	33	28	35
Passed	33	28	35
Not Passed	0	0	0
Examination Pass Rate	100.0%	100.0%	100.0%
(National Average)	96.9%	91.7%	94.2%

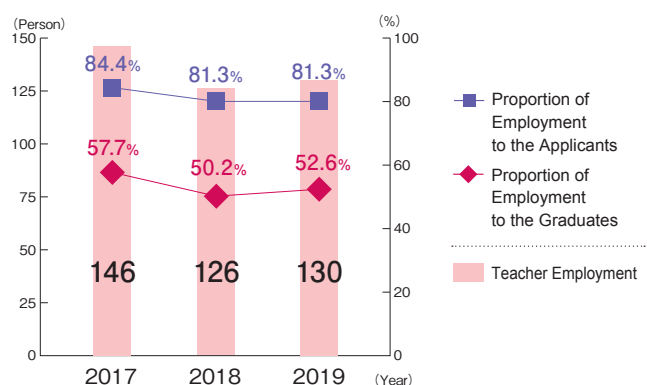
* New graduates only



Teacher Employment Rate (Faculty of Education)

	2017	2018	2019
Graduates	253	251	247
Applicants	173	155	160
Employment (Temporary Teacher)	146	126	130
Proportion of Employment to the Applicants	84.4%	81.3%	81.3%
Proportion of Employment to the Graduates	57.7%	50.2%	52.6%

* Training Course for School Teachers, and Training Course for Teachers at Special Needs School only



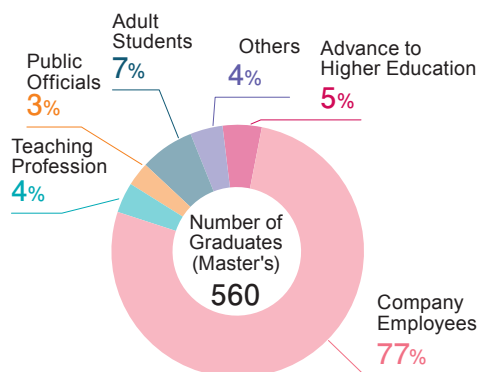
■ Number of Graduates (Graduate School) / Career Paths

Number of Master's Degrees Awarded

Master's Degree	2019	Cumulative Total
Education	60	1,511
Regional Studies	21	343
Regeneration and Advanced Medical Sciences		197
Nursing	9	83
Engineering	368	8,582
Applied Biological Sciences	102	3,102 *
Total	560	13,818

* Graduates of Faculty of Agriculture included.

Career Paths upon Completion of Master's Program



Career Paths of 2019 Graduates (Master's Program)

Career Paths

As of May 1, 2020

Graduate School Classification	Education		Regional Studies	Medicine	Natural Science and Technology *	Total
	Master's Program	Professional Degree Program	Master's Program	Master's Program	Master's Program	
Graduates	36 (13)	24 (6)	21 (13)	9 (8)	470 (95)	560 (135)
Advance to Higher Education	2				24 (4)	26 (4)
Company Employees	27 (11)	3 (1)	9 (6)	1 (1)	433 (88)	473 (107)
Adult Students (Staying in Workforce)	5 (1)	21 (5)	2 (1)	7 (6)	2	37 (13)
Clinical Trainees						0 (0)
Others	2 (1)		10 (6)	1 (1)	11 (3)	24 (11)
Total	36 (13)	24 (6)	21 (13)	9 (8)	470 (95)	560 (135)

Employment Status by Industry

Graduate School Field of Business	Education		Regional Studies	Medicine	Natural Science and Technology *	Total
	Master's Program	Professional Degree Program	Master's Program	Master's Program	Master's Program	
Agriculture, Forestry and Fisheries					6 (1)	6 (1)
Mining and Quarrying						0 (0)
Construction					27 (3)	27 (3)
Manufacturing			2 (1)		292 (52)	294 (53)
Utility					7 (2)	7 (2)
Information and Communications	3		1		51 (7)	55 (7)
Transport and Postal Services					2 (1)	2 (1)
Wholesale and Retail Business			1 (1)		4 (1)	5 (2)
Finance and Insurance			1 (1)		1	2 (1)
Real Estate Business	1				1	2 (0)
Scientific Research, Professional and Technical Services					14 (9)	14 (9)
Accommodation and Eatery						0 (0)
Life-related Services and Entertainment			1 (1)		2	3 (1)
School Education	20 (8)	3 (1)			2 (2)	25 (11)
Education Support Business						0 (0)
Medical, Health Care and Welfare	1 (1)			1 (1)		2 (2)
Social Insurance, Social Welfare and Care Services						0 (0)
JA, Post Office, Co-op					2 (1)	2 (1)
Religion, Other Services			1 (1)		9 (5)	10 (6)
State Government Services					4 (1)	4 (1)
Local Government Services	2 (2)		2 (1)		9 (3)	13 (6)
Others						0 (0)
Total	27 (11)	3 (1)	9 (6)	1 (1)	433 (88)	473 (107)

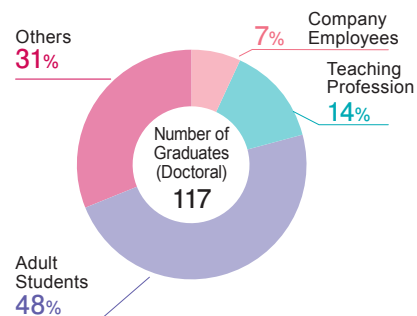
() indicates the number of female graduates.

* Graduate School of Engineering (master's program) included.

Number of Doctoral Degrees Awarded

Doctoral Degree		2019	Cumulative Total
Medical Sciences	Course Doctorate	30	1,062
	Dissertation Doctorate	5	1,491
Regeneration and Advanced Medical Sciences	Course Doctorate		71
	Dissertation Doctorate		10
Engineering	Course Doctorate	30	587
	Dissertation Doctorate	1	80
Agricultural Science	Course Doctorate	17	729
	Dissertation Doctorate	3	156
Veterinary Sciences	Course Doctorate	27	565
	Dissertation Doctorate	5	169
Pharmaceutical Science	Course Doctorate	2	29
	Dissertation Doctorate		3
Medical Sciences	Course Doctorate	1	17
	Dissertation Doctorate		0
Total		121	4,969

Career Paths upon Completion of Doctoral Program



Career Paths of 2019 Graduates (Doctoral Program)

Career Paths

As of May 1, 2020

Graduate School / United Graduate School Classification	Medicine		Engineering	United Graduate School of Agricultural Science	United Graduate School of Veterinary Sciences	United Graduate School of Drug Discovery and Medical Information Sciences	Total
	Doctoral Program	Doctoral Program					
Graduates		33 (6)	31 (10)	22 (5)	28 (13)	3 (3)	117 (37)
Advance to Higher Education							
Company Employees			8 (3)	6	9 (6)	1 (1)	24 (10)
Adult Students (Staying in Workforce)		26 (4)	10 (2)	8 (1)	10 (3)	2 (2)	56 (12)
Clinical Trainees							
Others		7 (2)	13 (5)	8 (4)	9 (4)		36 (15)
Total	0 (0)	33 (6)	31 (10)	22 (5)	28 (13)	3 (3)	117 (37)

Employment Status by Industry

Graduate School / United Graduate School Field of Business	Medicine		Engineering	United Graduate School of Agricultural Science	United Graduate School of Veterinary Sciences	United Graduate School of Drug Discovery and Medical Information Sciences	Total
	Doctoral Program	Doctoral Program					
Agriculture, Forestry and Fisheries							0 (0)
Mining and Quarrying							0 (0)
Construction							0 (0)
Manufacturing			1				1 (0)
Utility							0 (0)
Information and Communications							0 (0)
Transport and Postal Services							0 (0)
Wholesale and Retail Business							0 (0)
Finance and Insurance							0 (0)
Real Estate Business							0 (0)
Scientific Research, Professional and Technical Services			2 (1)	3	2		7 (1)
Accommodation and Eatery							0 (0)
Life-related Services and Entertainment							0 (0)
School Education			5 (2)	3	7 (6)	1 (1)	16 (9)
Education Support Business							0 (0)
Medical, Health Care and Welfare							0 (0)
Social Insurance, Social Welfare and Care Services							0 (0)
JA, Post Office, Co-op							0 (0)
Religion, Other Services							0 (0)
State Government Services							0 (0)
Local Government Services							0 (0)
Others							0 (0)
Total	0 (0)	0 (0)	8 (3)	6 (0)	9 (6)	1 (1)	24 (10)

() indicates the number of female students.

■ Student Support Facility

Welfare Facilities

University Hall

Dining Hall	Store	Extracurricular Activity Room	Student Service
Dining Hall No.1 (452 seats) Vending Machines Lounge Repos (Deep-Fried Chicken Rice Bowl Shop) (70 seats)	Co-op, Bookstore ATM	Hall Music Room Meeting Room 1 to 4 Meeting Room 6 Meeting Room 9 to 12 (Meeting Room 9 and 11 are Japanese Rooms.)	Career Center Support Room (for Students with Disabilities) Chamomile Cafe (Gender Equality Promotion Office)

Dining Hall No.2

School of Medicine Education and Supporting Services Building

Dining Hall	Dining Hall	Store
Dining Hall (507 seats) Convenience Store "PECO" (13seats)	Dining Hall in Medical Building (156 seats)	Co-op, Bookstore

Student Dormitory

Name	Kurono Student Dormitory (1-1 Yanagido, Gifu City)
Number of Rooms	200 (male) 75 (female)



Kurono Student Dormitory

Sports Facilities / Facilities for Extracurricular Activities

Indoor Sports Facility		Outdoor Sports Facility		Facility for Extracurricular Activities	
Facility	Descriptions	Facility	Descriptions	Facility	Descriptions
Gymnasium	Gymnasium, Second Gymnasium Changing Room (Locker, Shower), Gymnastic Equipment Storage Room, Fitness Room	Athletic Field	400 meters x 8 courses	Common Facility for Sports Club	10 Common Rooms (2 clubs per room), 1 Meeting Room
Japanese Martial Arts Gymnasium	Kendo Training Hall, Judo Training Hall	Ballpark		Common Facility for Culture, Arts and Science Club	10 Common Rooms (1 Japanese Room) (2 to 4 clubs per room)
Kyudo Training Hall		Tennis Courts	12 courts (6 grass courts, 6 all weather type courts)	Multipurpose Accommodation Facility	4 Training Rooms / Sleeping Quarters, Bathroom, Dining Room
		Volleyball Courts	4 courts (all weather type courts)	Extracurricular Seminar House	30 Guest Rooms, Hall, 2 Lounges, 6 Guest Rooms for Clinical Trainees
		Handball Courts	2 courts (1 clay court, 1 all weather type court)	Motor Garage	
		Basketball Courts	3 courts (all weather type courts)	Glider Hangar	
		Soccer Field	1 Soccer Ground	Stable / Equestrian Ground	
		Rugby Field	1 Rugby Ground	Archery Field	
		Swimming Pool	1 Swimming Pool (50 meters x 8 courses)		

■ Student Club Activity

Gifu University Student Clubs / Circles

As of May 1, 2020

Organizing Committee (3)

- ◆ Gifu University Festival Committee
- ◆ Gifu University Spring Festival Committee
- ◆ Gifu University Career Fair Committee

Culture, Arts and Science Clubs (34)

- ◆ Hiromu (Acoustic Guitar Circle)
- ◆ Tea Ceremony
- ◆ Performing Arts
- ◆ Dream Box (Student Humane Society)
- ◆ Students Volunteer Safety and Fire Corps
- ◆ Radi Sta (Broadcasting)
- ◆ Orchestra
- ◆ Guitar & Mandolin
- ◆ Competitive *Karuta* (Japanese Card Game)
- ◆ Foodie Club
- ◆ Popular Music
- ◆ Chorus
- ◆ GI
- ◆ Coroppo (Puppet Play for Children)
- ◆ Jugggrass(Juggling Circle)
- ◆ Photography
- ◆ Shogi (Japanese Chess)
- ◆ Brass Band
- ◆ Biological Science
- ◆ Cat Circle
- ◆ Tsukinowaguma (Asiatic Black Bear) Study
- ◆ Table Game Circle
- ◆ Zoo Club
- ◆ Art
- ◆ Student Folk Song Music Band
- ◆ Writing Fairy Tales
- ◆ Japanese Music
- ◆ Star Watching
- ◆ Manga
- ◆ UNESCO
- ◆ Rakugo Comic Storytelling
- ◆ Ryugaku Love (International Exchange)
- ◆ Three trees (Greening)
- ◆ Robocon (Robot Contest)

Sports Clubs (35)

- ◆ Archery
- ◆ Aikido
- ◆ American Football
- ◆ Iaido (Art of Weaponless Self-defense)
- ◆ Karate
- ◆ Kyudo (Japanese Archery)
- ◆ Kendo (Swordsmanship)
- ◆ Glider
- ◆ Tennis
- ◆ Baseball (Hardball)
- ◆ Soccer
- ◆ Mountain Climbing
- ◆ Automobile
- ◆ Judo
- ◆ Baseball (Semi-Hardball)
- ◆ Shorinjikempo Martial Arts
- ◆ Swimming
- ◆ MEC Stars (Street Dance)
- ◆ Soft Tennis
- ◆ Gymnastics
- ◆ Table Tennis
- ◆ Stars (Cheerleading)
- ◆ Tae Kwon Do
- ◆ Equestrian
- ◆ Basketball
- ◆ Badminton
- ◆ Volleyball
- ◆ Handball
- ◆ Formula Racing
- ◆ Canoe
- ◆ Yosakoi Dance Circle
- ◆ Lacrosse
- ◆ Rugby
- ◆ Track & Field
- ◆ Wander Vogel

Sports Clubs for Medical Students (20)

- ◆ Swimming
- ◆ Basketball
- ◆ Tennis
- ◆ Soccer
- ◆ Track & Field
- ◆ Skiing
- ◆ Boat
- ◆ Handball
- ◆ Mountain Climbing
- ◆ Baseball (Semi-Hardball)
- ◆ Soft Tennis
- ◆ Golf
- ◆ Rugby
- ◆ Equestrian
- ◆ Badminton
- ◆ Kyudo (Japanese Archery)
- ◆ Kendo (Swordsmanship)
- ◆ Volleyball
- ◆ Table Tennis
- ◆ Karate

Culture, Arts and Science Clubs for Medical Students (15)

- ◆ GEMs (Gifu Emergency Medical Study)
- ◆ Okuhotaka Medical Club
- ◆ Tropical Medicine
- ◆ Gifu Medical Care
- ◆ Koto Music
- ◆ Go (Japanese Board Game)
- ◆ Liebe Parze (Jazz)
- ◆ Art
- ◆ Castanuela (Band)
- ◆ Kirin no Kai (Study Group of Clinical Skill)
- ◆ GIFMSA (Gifu International Federation of Medical Students' Association)
- ◆ English Club
- ◆ Piano
- ◆ Cooking
- ◆ Chamber Orchestra

Besides the listed above, there are 44 other clubs.

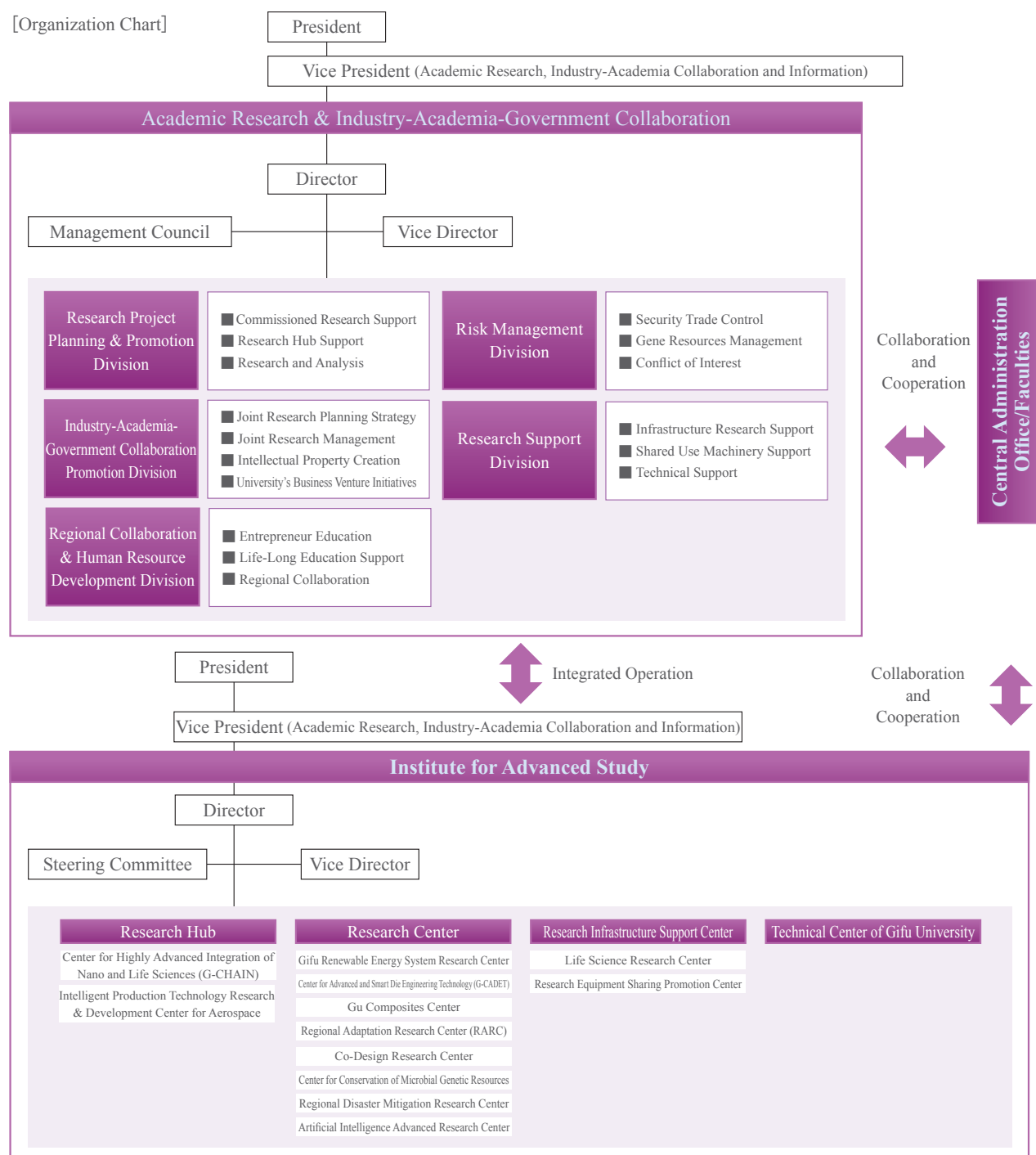
“Explore” as a keyword

Research

■ Academic Research & Industry-Academia-Government Collaboration

■ Institute for Advanced Study

[Organization Chart]



■ Research Initiatives

Core Educational and Research Directives Tokai National Higher Education and Research System

Institute for Glyco-core Research (iGCORE)

Institute for Glyco-core Research (iGCORE) is the world's first comprehensive glycans research base devoted to research collaboration and information sharing among glycan chemistry and imaging scholars from the Center for Highly Advanced Integration of Nano and Life Sciences (G-CHAIN, Gifu University) and researchers specializing in glycobiology and medicine in Nagoya University. Members of iGCORE is aiming to upgrade upgrading life science built on the biology of nucleic acids and proteins, marking a new milestone in the field of life sciences. Bolstered by this breakthrough technology, iGCORE continues to focus on basic research projects to spark medical revolution such as creation of individualized disease prevention and detection of presymptomatic illnesses.

Aerospace Research and Education Hub (AREH)

To adapt to ever-evolving aerospace technologies and to address societal needs, the Aerospace Research and Education Hub implements robust interdisciplinary activities and forges strong partnerships among industry, government and academia. Under these mandates, AREH promotes research and development, fosters human resources to enhance its global competitiveness in the space industry.

Research Hub

Center for Highly Advanced Integration of Nano and Life Sciences (G-CHAIN)

The Center for Highly Advanced Integration of Nano and Life Sciences is aimed for the clarification of the problem of the life sciences and the conquest of the disease through the clarification of the phenomenon configured by nucleic acid, protein and glycans. The Center aims to become a frontier of research and development in life sciences through actively pursuing research initiatives and cutting edge development of highly functional molecules and molecular complexes.

Intelligent Production Technology Research & Development Center for Aerospace

The Intelligent Production Technology Research & Development Center for Aerospace promotes "Human resource development and research project on production technology aiming to form Japan's aerospace industry cluster" and carries out innovative research and development projects for the advancement of production system architect and cutting-edge production technologies.

Research Center

Gifu Renewable Energy System Research Center (Established in April, 2018)

To achieve Gifu Prefecture's next-generation energy vision and extend to the worldwide, Gifu Renewable Energy System Research Center will perform R&D on innovative technologies to "create", "store", "transport" and "use" CO₂-emission free energy from renewable energy, and introduce the "Local Production for Local Consumption Energy Systems (Regional Revitalization Gifu Model)" for practical applications in society at large in a collaborative effort involving industries, government and academia. For the realization of this "Gifu Model," the Center is pursuing challenges for breakthroughs of individual innovative technologies posed by efficient renewable energy use, as well as the establishment of virtual grid energy system with electric vehicles and an autonomous decentralized energy management system.

[Research Division] (Number of People) Energy Creation Field (36), Energy Carriers and Storage Field (13), Innovation Energy Venture Creation Field (17), Energy System Integration Field (18) 84 people in total

Center for Advanced and Smart Die Engineering Technology (G-CADET) (Established in April, 2018)

The Center for Advanced and Smart Die Engineering Technology is working to enhance the international competitive edge of Japanese manufacturing businesses in a range of industries by 1) further reinforcing Gifu University's already formidable research strengths in the fields of product engineering and manufacturing via AI and IoT, 2) the development of production technologies and highly-reliable design techniques as exemplified by, for example, smart die processing, 3) the development of 3D additive manufacturing, and 4) human resource development.

[Research Division] (Number of People) Data Analysis Research Division (10), Materials Processing Research Division (14), Design Technology Research Division (11), Additive Manufacturing Research Division (6), Human Resource Development Division (8), Regional Collaboration Division (3) 52 people in total

Gu Composites Center (Established in April, 2018)

As a material engineering and manufacturing research center, Gu Composites Center carries out a great variety of composite material research programs and projects, ranging from molecular aggregates to fiber and resin composites. The Center has established a pioneering, unique research organization that integrates material chemistry, biochemistry, mechanical engineering, and even medicine, to achieve production process of diversified products in small quantities through the concept of "Tailored Materials & Design." It enables the Center to develop lightweight parts for aircraft and automobiles as well as composite materials used in medical applications in the human body. As one of the three major composite material centers in Japan's Tokai Hokuriku region, the Center actively pursues collaboration with local industry and businesses to aid in their expansion into the world market.

[Research Division] (Number of People) Division of barrier-free materials (32), Division of composites for human (23), Division of environmental technology of composites (12) 51 people in total

Regional Adaptation Research Center (RARC) (Established in February, 2020)

The Regional Adaptation Research Center promotes research and development initiatives to address the urgent needs of measuring growing impacts from global warming on local communities, and the need for people's "adaptation" to rapidly changing socioeconomic dynamics such as depopulation. Such initiatives will be implemented through cross-sectional alliances in the fields of climate, forest, hydrology, rivers, agriculture, ecosystems, and the society. The Center also collaborates with regional stakeholders to collaboratively create new environmental assessment technologies to tackle complex environment agendas, seek solutions, and provide support to local governments, communities, and private enterprises working toward these endeavors. Furthermore, together with the "Gifu Prefecture Center for Climate Change Adaptation (established in April 2020)," the Center engages in joint research activities to meet the government needs, support conservation activities and develop human resources.

[Research Division] (Number of People) Division of Regional Climate Change (2), Division of Forest Ecosystem and Resources (4), Division of Water Environments (6), Division of Agricultural Adaptation (2), Division of Social Systems (4), Division of Regional Collaboration (2), 20 people in total

Co-Design Research Center (Established in April, 2020)

As a community building thinktank, the Co-Design Research Center's overall mission is the creation of value-added contributions to community where people can enjoy wholesome, fulfilling lives. To this end, the Center's goal is the pursuit of a vibrant and sustainable society through industry-academia-government collaboration and its interdisciplinary approaches. With using design-driven approach that creates experience value and data-driven approaches, we co-create comprehensive planning and policies for example city planning, comprehensive disaster prevention, landscape design, history of urban formation, resource utilization, needs assessment, product development, economic effect measurement, consciousness structure analysis, human resource development and educational effect analysis. And we conduct design research together starting with the extraction of needs aiming to the achievement of objectives and verification of effects.

[Research Division] (Number of People) Human Resources Design Field (4), Community Design Field (4), Value Design Field (5), 13 people in total

Center for Conservation of Microbial Genetic Resources (Established in April, 2016)

As a conservation center of pathogenic microbial organisms, the Center maintains microbial resources that it possesses, and also accepts microbial strains deposits. In addition to maintaining and storing microbial cultures, we provide microbial cultures and DNA for research and industrial applications.

Collection, Preservation and Distribution of Pathogenic Microbial Strains (7; of them, 3 academic staff, 4 support staff)

Regional Disaster Mitigation Research Center (Established in April, 2015)

As a knowledge hub of special expertise and a think tank regarding natural disaster science in Gifu University, the Regional Disaster Mitigation Research Center plays an important role in enhancing regional disaster prevention and mitigation. Its major objectives are to improve disaster preparedness and response, and thereby to meet the regional needs for risk reduction. Specifically, the Center promotes academic and practical research on disaster prevention/mitigation, and proposes new frameworks/schemes to enhance disaster mitigation capabilities and resilience in local communities. In addition, the Center supports policy-making of local governments, provides technological support, and problem-solving assistance for local communities in terms of planning and implementation of disaster prevention/mitigation measures.

[Research Division] (Number of People) Division of Technology Development for Disaster Mitigation (24), Division of Disaster Medicine (11), Division of Social Development for Disaster Mitigation (6), Specially-Appointed Associate Professor (1) 42 people in total

Artificial Intelligence Advanced Research Center (Established in April, 2019)

The Artificial Intelligence Advanced Research Center aims to promote many promising technologies today such as AI, IoT and data sciences across the campus. As a cross-sectional research liaison office, the center strives to initiate applied research on AI and augment scientific advantages Gifu University currently possesses. The center provides comprehensive AI study sessions and research meetings to the teaching staff and students of every faculty and school in an effort to build an infrastructure enabling researchers to apply AI to their respective academic activities. To meet the needs of local businesses, supporting joint research activities with local industries, becoming a supply base for advanced technology and a source for AI professionals are also among the center's major objectives.

Education Division, Research Division, Joint Research Promotion Division 46 people in total

Research Infrastructure Support Center

Life Science Research Center (Established in April, 2018)

As one of the Centers for Education and Research Activity, Life Science Research Center supports education and research activities in progressive, dynamic research fields of life sciences. The Center furnishes and offers expensive, large-scale equipment that would otherwise be difficult for individual faculty members to procure and maintain, equipment whose upkeep and management are labor intensive, and facilities/laboratories that are in full compliance with pertinent laws and regulations. By properly handling radioisotopes and laboratory animals, and observing all relevant rules and regulations, the Center endeavors to facilitate the University's education and research initiatives.

[Support Section] (Number of People) Division of Genomics Research, Division of Anaerobe Research, Division of Animal Experiment, Division of Instrumental Analysis, Division of Radioisotope Experiment (32 in total, of them, 11 academic staff, 5 technical staff)

[Joint Research Course] (Number of People) Division of Anti-Oxidant Research (4) 36 people in total

Research Equipment Sharing Promotion Center (Established in April, 2018)

The Research Equipment Sharing Promotion Center creates the Web system that enables researchers and scholars to share the information about the availability of research instrument installed at each faculty and laboratory for their experiments on life sciences, physical property and material sciences. The Center also endeavors to strengthen Gifu University's and regional research infrastructure through introduction of new equipment with the view to addressing the various needs arising across the University.

[Support Division] (Number of People) (15 staff including 1 research assistant, 3 support staff)

Technical Center of Gifu University (Established in April, 2020)

The major goal of the Center is to contribute to the University's academic excellence by providing technical support in the fields of education and research, enhancing skills of technical staff, and implementing the transfer of knowledge and expertise to the next generation.

Large-Scale Research Projects

In addition to the Project Research Center, Gifu University participates in large-scale research projects, and some have been selected as research and development programs by the Ministry of Education, Culture, Sports, Science and Technology.

Center of Innovation Science and Technology based Radical Innovation and Entrepreneurship Program (COI STREAM) supported by the Ministry of Education, Culture, Sports, Science and Technology

Year	Program	Responsible Body
Since 2013	Construction of Next-generation Infrastructure System Using Innovative Composite Materials: Enabling Society to Coexist with Earth for Centuries in Safety and Security	Kanazawa Institute of Technology, Gifu University, 2 other universities, and 11 institutions
The goal is to use novel technologies to develop innovative composite materials that combine excellent environmental characteristics with high performance (light weight, long-term durability, self-repair, incombustibility, etc.), flexibility of design, simplicity of construction, and which are easy to relocate and recycle after construction. The aim is to develop practical applications for use of materials in next-generation infrastructure, materials which have a low social cost and can create new value.		

Human Resource Development Program for Science and Technology

Gifu University's applications for the projects of human resource development, securing personnel and promotion of strong leadership in the fields of science and technology are accepted by the Japan Science and Technology Agency.

Initiative for Realizing Diversity in the Research Environment (Collaboration Model)

Year	Program	Responsible Body
2015 to 2020	Gifu Women Empowerment Project supported by MEXT (Ministry of Education, Culture, Sports, Science and Technology)	Gifu University, Gifu Pharmaceutical University, Gifu Women's University, API Co., Ltd.
This project, which is being led by Gifu University and jointly run by Gifu Pharmaceutical University, Gifu Women's University, and API, aims to create a diversity in work and research environments. By supporting the women's joint research, providing a research assistant for female researchers, enhancing of the mentor system, and creating Internship program for the women researchers etc., this project empowers the Gifu women and her community. Through this program, the university aims to strengthen the research skills of female researchers by supporting collaborative-type joint research projects and to actively work to increase the percentage of female researchers and recruit female researchers for senior positions (professor and associate professor) through positive action, such as recruiting only female teaching staff, providing leadership training, etc.		

■ Grants-in-Aid for Scientific Research

Grants-in-Aid for Scientific Research / Multi-Year Fund

2019

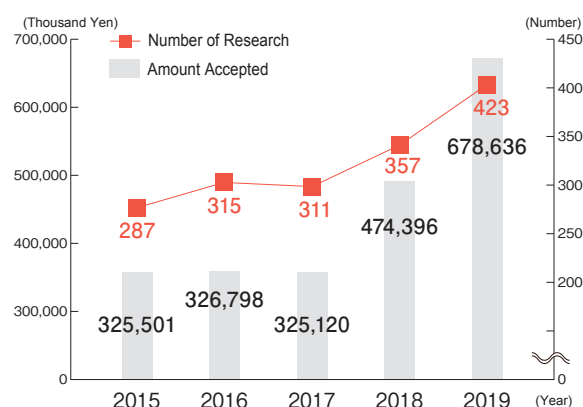
Category	Number of Research	Direct Expenses (in thousand yen)	Indirect Expenses (in thousand yen)	Faculty / Organization																		
				Faculty of Education	Graduate School of Education	Faculty of Regional Studies	School of Medicine	Graduate School of Medicine	University Hospital	Faculty of Engineering	Graduate School of Engineering	Faculty of Applied Biological Sciences	United Graduate School of Agricultural Science	United Graduate School of Veterinary Sciences	United Graduate School of Drug Discovery and Medical Information Sciences	River Basin Research Center	Health Administration Center	Center for Collaborative Study with Community	Organization for Promotion of Higher Education and Student Support	Organization for Research and Community Development	Head Office for Information Management	Organization for Promotion of Globalization
Scientific Research on Innovative Areas	8	31,700	9,510	2				3		2										1		
Scientific Research (A)	5	34,700	10,410	1								2		1						1		
Scientific Research (B)	51	194,700	58,410	3			1	8	2	17	3	11			1	3				2		
Scientific Research (C)	218	213,800	64,140	36	4	6	13	44	23	48	1	31				3	1	1	1	6		
Challenging Research (Exploratory)	12	24,100	7,230	2				4	1	3	1	1										
Young Scientists (A)	2	2,700	810					1		1												
Early-Career Scientists / Young Scientists (B)	81	85,800	25,740	8	1	2	5	11	23	13		11		1	2	3	1					
Research Activity Start-up	6	6,300	1,890		1			1	1			2								1		
Encouragement of Scientists	5	2,520		1				1	2			1										
Publication of Scientific Research Results (Scientific Literature)																						
JSPS Fellows (in Japan)	12	10,200	540					1			2		4	4	1							
JSPS Fellowships (overseas)	3	2,300										2								1		
Fund for the Promotion of Joint International Research	4	23,000	6,900	1				1				2										
Total	407	631,820	185,580	54	6	8	19	75	52	84	7	63	4	6	4	9	2	1	1	12	0	

* The expenses do not always coincide with the actual amount because fractions smaller than a thousand yen is rounded down.

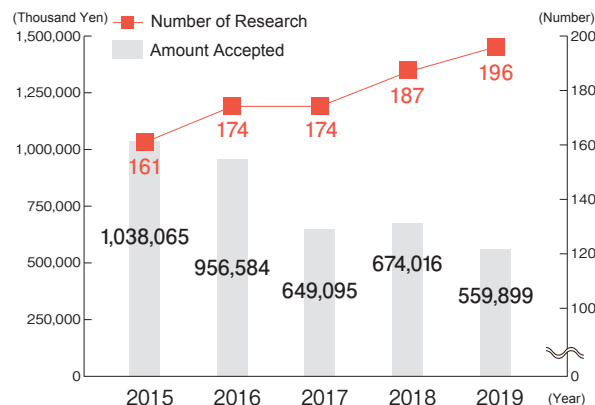
* Provisional grants for 2019

Joint Research / Commissioned Research

Joint Research



Commissioned Research



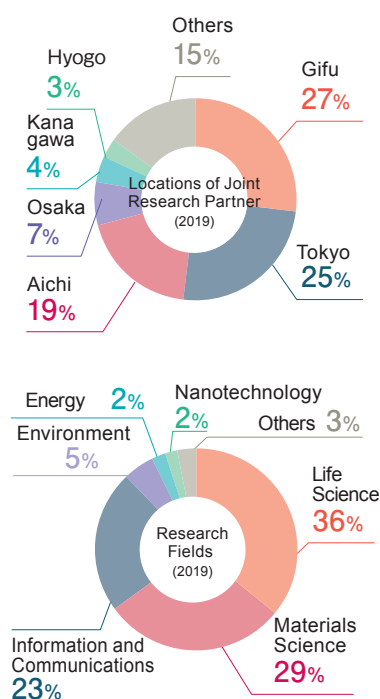
Joint Research / Commissioned Research (Unit: Thousand Yen)

2019

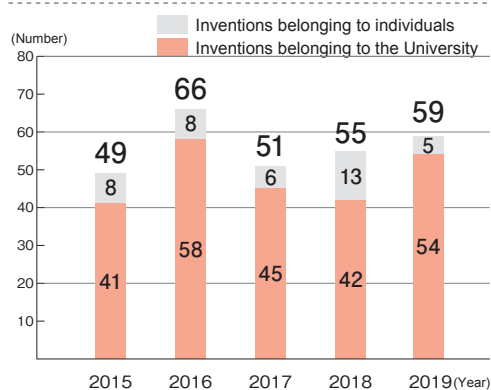
Faculty / Organization	Joint Research		Commissioned Research	
	Number Accepted	Amount Accepted	Number Accepted	Amount Accepted
Faculty of Education	2	1,133	3	1,899
Faculty of Regional Studies	1	290	0	0
Graduate School of Medicine / School of Medicine	22	107,852	36	102,224
University Hospital	13	11,405	79	94,310
Faculty of Engineering	213	293,074	32	122,848
Faculty of Applied Biological Sciences	99	85,641	16	43,339
United Graduate School of Agricultural Science	4	3,500	2	12,727
United Graduate School of Drug Discovery and Medical Information Sciences	9	25,353	2	13,704
Center for Collaborative Study with Community	1	836	3	4,755
Intelligent Production Technology Research & Development Center for Aerospace	1	3,300	0	0
River Basin Research Center	9	8,748	8	33,028
Organization for Research and Community Development	46	134,775	15	131,065
Head Office for Information Management	3	2,729	0	0
Total	423	678,636	196	559,899

In the case of a joint commission with multiple organizations, it counts towards the organization which has the greatest amount of research expenses (It can be zero in other participating organizations).

Joint Research



Number of Inventions for Patent



“Contribute” as a keyword

For Society

■ University-Community Collaboration

Agreements with Local Governments

In order to contribute to local community development and the development of human resources, Gifu University actively promotes collaborative activities in a wide range of fields by concluding agreements on collaboration with local governments. Gifu University has concluded three new agreements with local governments from April 2019 through March 2020 and will promote cooperation activities with individual governments.

Agreements for Partnership and Cooperation

Local Government/Institution	Date of Agreement	Collaboration Activity (2019) *
Ogaki City	March 31, 2006	• Monozukuri Gifu Techno Fair
Kakamigahara City Kakamigahara Chamber of Commerce & Industry	October 10, 2007	• Space Engineering Seminar
Hashima City	February 26, 2008	• Community Leader Practical Training (next-generation community leader fostering program) • Delegation of General Project Promotion Coordinator to Vice Mayor • Delegation of Community Coordinator to City Officials
Gifu Prefecture	March 28, 2008	• Gifu Prefecture and Gifu University Collaboration Promotion Meeting • Industry-Academia-Bank-Government Collaboration Human Resource Development Project • Local Government Collaboration-Type Internship • Delegation of Community Coordinator to Prefectural Officials
Seki City	September 16, 2008	• Summer School (common program for COC+ participating universities)
Mino City	December 17, 2008	• Summer School (common program for COC+ participating universities)
Gifu City	February 27, 2009	• Accepting City Officials for Community Coordinator Training Program
Takayama City	April 17, 2009	• Delegation of Community Coordinator to City Officials
Mitake Town	October 28, 2009	• Cooperation for Low-Carbon Society (by photovoltaic generation, etc.)
Gujo City	March 19, 2012	• Community Leader Practical Training (next-generation community leader foster program) • Summer School (common program for COC+ participating universities) • Delegation of Community Coordinator to City Officials
Minokamo City	September 18, 2015	• Joint Research for Afforestation by Goats
Kitagata Town	November 20, 2015	• Education, Culture and Sports Promotion Projects
Nakatsugawa City	December 15, 2015	• Community Leader Practical Training (next-generation community leader foster program) • Delegation of Community Coordinator to City Officials
Ibigawa Town	January 19, 2016	• Regional Revitalization for Ozu District
Ginan Town	January 29, 2016	• Delegation of Community Coordinator to Town Officials
Motosu City	May 27, 2016	• Human Resources Development Projects
Yamagata City	July 1, 2016	• Promotion of Local Schools Collaboration
Toki City	August 2, 2016	• Community Leader Practical Training (next-generation community leader foster program)
Yoro Town	October 14, 2016	• Drafting Lifelong Learning Basic Plan
Yaotsu Town	December 1, 2016	• Revitalization of Mountainous Rural Areas
Kasamatsu Town	April 17, 2017	• Polyhedron Exhibition at Kasamatsu Museum of History and Future
Gero City	November 24, 2017	• Cooperation for Regional Support for Children with Special Needs
Shirakawa Village	January 22, 2018	• Cooperation for Shirakawago Gakuen School Training
Tajimi City	October 9, 2018	• Revitalization for Nagase Shopping Mall
Kaizu City	March 4, 2019	• Education and Culture Promotion Projects
Mizuho City	December 24, 2019	• Human Resources Development and Regional Revitalization Projects
Hida City	February 28, 2020	• Summer school (common program for COC+participating universities)
Mizunami City	March 10, 2020	• Regional Revitalization Projects

* In addition to the activities above, many Gifu University faculty members cooperate with local municipalities as members of advisory bodies, committees and instructors.

Promotion of Collaboration Projects with the Community

With the goal of contributing to regional revitalization, since 2007, Gifu University has established the Gifu University Development Fund (for University-Community Collaborations) to move forward with projects undertaken as part of regional collaboration. Since 2014, as part of its University COC (Center of Community) projects, the university has promoted interdisciplinary cooperation, efforts to reinforce interdisciplinary and inter-department collaboration, and collaborative study with parties such as local governments, NPOs, community organizations, and private companies. The university has also actively supported efforts to contribute to the solution of local community problems through Local Community-Oriented Education Projects.

• Local Community-Oriented Education Project in 2019: 8 projects

■ Extension Course / Symposium / Forum

Extension Course

The faculties and centers of Gifu University have opened various extension courses with the aim of contributing to the advancement of education and culture in the region while sharing its achievements in education and research with the community. In the extension courses for students in elementary school, junior and senior high school, Gifu University also provides hands-on workshop for monozukuri (making things, manufacturing). The extension courses available for 2020 are as follows:

- Lifelong Learning Course for Working People 7 courses
- Extension Course/Hands-on Workshop for Students in Elementary School, Junior and Senior High Schools 14 courses

Gifu Symposium

Gifu University has held the Gifu Symposium twice a year since 2001. The aims of the symposium are to introduce the achievements of research at Gifu University, and to provide the latest information about key themes for the 21st century on community and global matters, such as the environment, biotechnology, information, and education as the center of the community.

Gifu University Forum

Gifu University regularly holds lectures delivered by top researchers who have made great contributions to the development of each academic field.

- In 2019 54th Environmental University Forum: "Enjoy Science: Close in on Photocatalysis"

Gifu University Satellite Campus Open Course "Academic Club"

Gifu University opens the "Academic Club" at its Satellite Campus to offer people the venue for life-long learning lectured by professors emeritus.

- In 2019 24 lectures (148 sessions) A total of 3,901 people attended

■ City College Program

Gifu University City College Program

Gifu University implements Gifu University City College Program at the Gifu Chunichi Culture Center. It is a joint program with the Chunichi Shimbun Co., Ltd. Faculty members of Gifu University deliver lectures on themes related to society and life.

- In 2019 6 lectures

■ Senior High School-University Collaboration

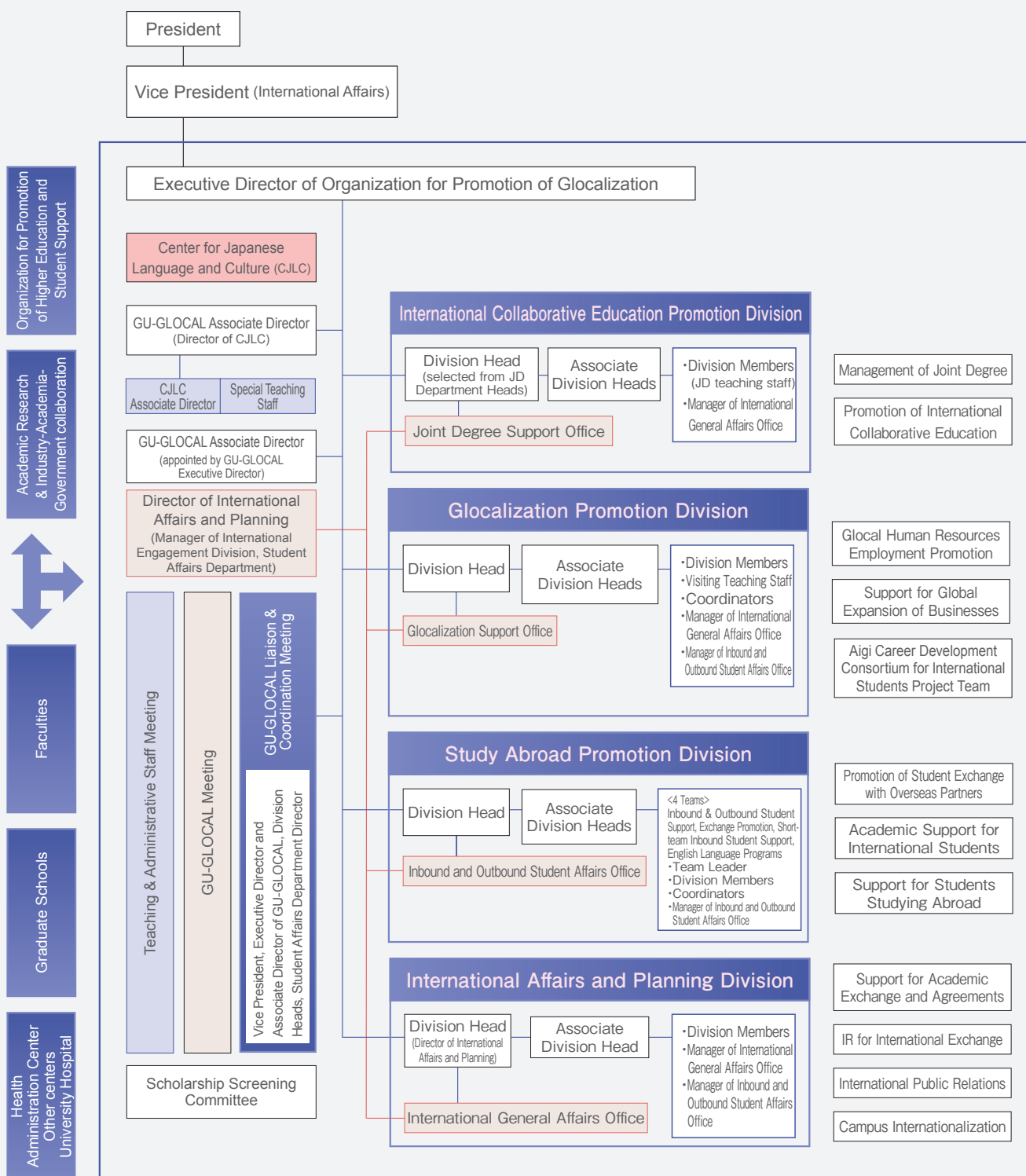
Gifu University collaborates with local senior high schools and encourages senior high school students to develop a deep understanding of a wide range of research fields. Gifu University promotes activities for mutual understanding between senior high schools and Gifu University regarding current education through projects aiming to motivate students to learn, along with the exchange of opinions with senior high school officials.

[Achievements in 2019]

- Visiting Lectures in Senior High Schools 116 courses
(Courses for 2020 are a total of 215 including 20 Humanities Courses, 10 Social Science Courses, 31 Science Courses, 100 Applied Biological Sciences Courses, 35 Medical and Welfare Courses, and 19 Comprehensive Courses.)
- Gifu Network University Consortium (Senior High School-University Collaboration, Information Exchange Meeting)
- The 1st Seminar for Senior High School-University Collaboration (on October 30, 2019)
- The 2nd Seminar for Senior High School-University Collaboration (on February 14, 2020)

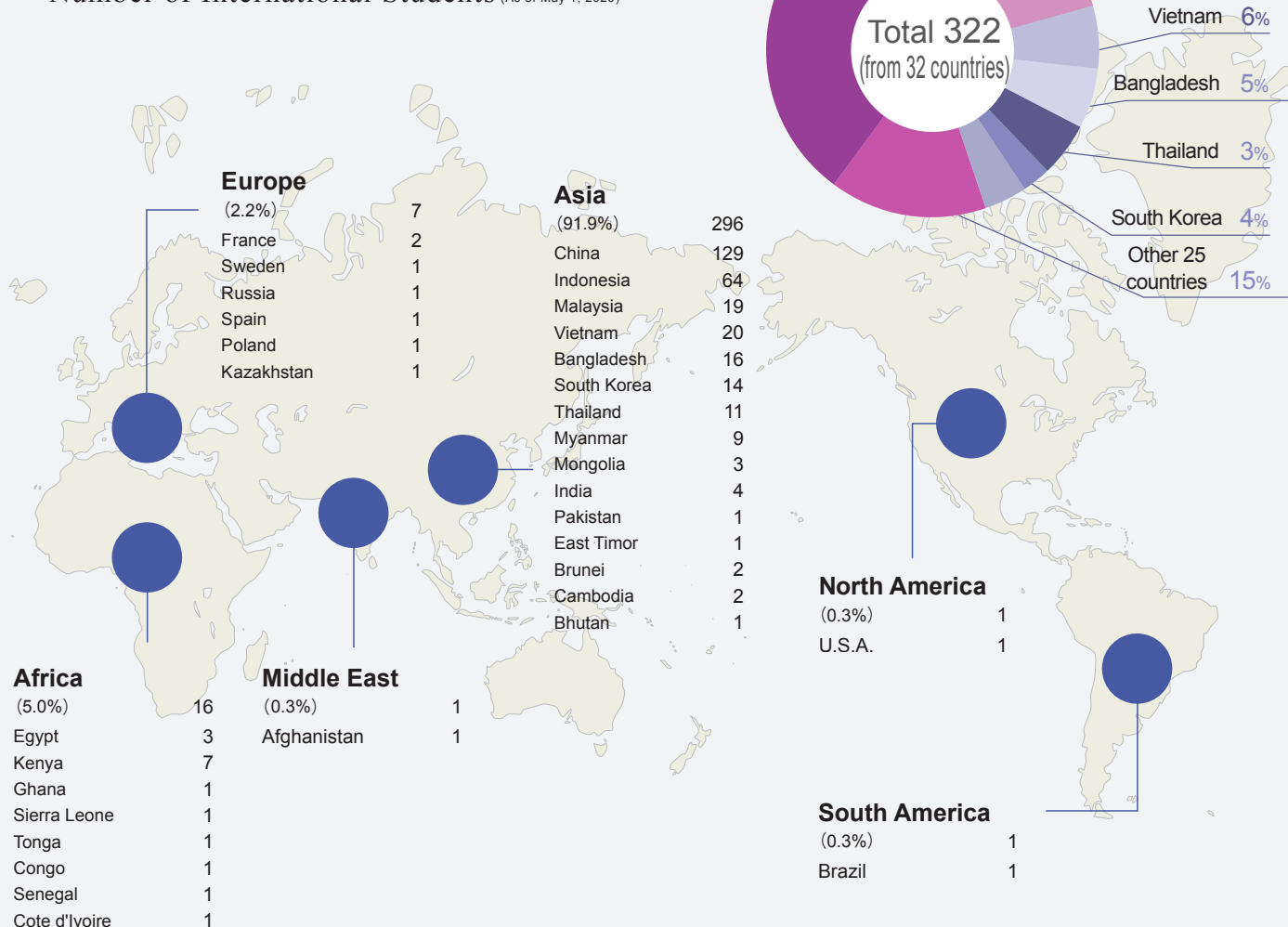
■ Gifu University Organization for Promotion of Glocalization : GU-GLOCAL

[Organization Chart]

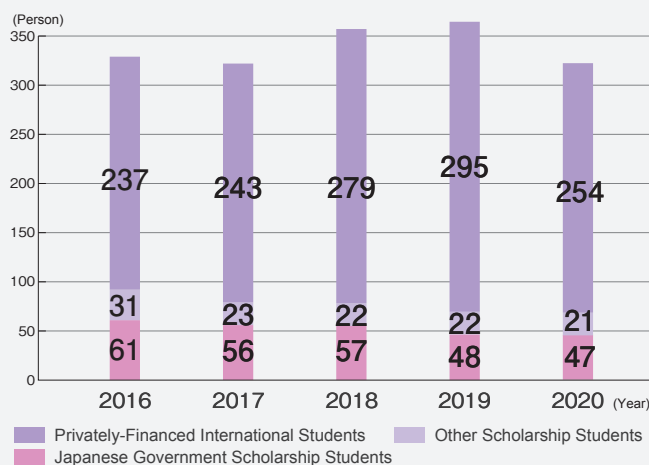


■ Statistical Data on Inbound and Outbound

Number of International Students (As of May 1, 2020)



Number of International Students by Funding Source (As of May 1 in each year)



Exchange Program

(person)

Country	University	Outbound			Inbound		
		2017	2018	2019	2017	2018	2019
China	Guangxi University				1	2	3
	University of Electronic Science and Technology of China				2	1	2
	Huaqiao University				1	2	2
	Jiangnan University				2	3	2
South Korea	Seoul National University of Science and Technology					3	2
	Mokpo University						
	Korea University			1			
Thailand	Kasetsart University				1		
	Chiang Mai University					1	
Australia	Griffith University	2					
	University of Technology, Sydney	9	2	3			2
Sweden	Lund University	1		1		1	1
Germany	The University of Bayreuth		2			1	
	The University of Erfurt		1	1			
Spain	The University of Salamanca						2
U.S.A.	Northern Kentucky University	2	1	4	2	2	1
	West Virginia University		2				
	Utah State University		2				
	San Diego State University		1				
Lithuania	Kaunas University of Technology				1		
Canada	Lakehead University		2				
Total		14	13	10	10	16	17

Summer School Program

(person)

Country	University	Outbound			Inbound		
		2017	2018	2019	2017	2018	2019
South Korea	Seoul National University of Science and Technology	2	3	1			
	Mokpo National University		1	1	3	3	2
Australia	Griffith University	3	7	6			
	University of Technology, Sydney				2		
U.S.A.	Northern Kentucky University				1	4	3
Thailand	Kasetsart University					2	
Canada	University of Alberta	29	36	43			
China	University of Electronic Science and Technology of China				5	1	1
	Guangxi University					1	2
Malaysia	The National University of Malaysia				7	2	2
Total		34	47	51	18	13	10

■ International Academic Exchange

University-Level Exchange 49 Universities and 1 Government Agency in 20 Countries

As of May 1, 2020

University / Government Agency	Country	Concluded
University of Campinas	Brazil	1984. 8.27
San Diego State University	U.S.A.	1985. 5. 7
Zhejiang University	China	1986. 4.21
Guangxi University	China	1986. 4.24
University of Electronic Science and Technology of China	China	1986. 7.21
Jiangnan University	China	1986. 9. 3
Lund University	Sweden	1987. 9.12
Northern Kentucky University	U.S.A.	1990. 9.26
Seoul National University of Science and Technology	South Korea	1992. 3.19
Griffith University	Australia	1995. 3. 3
The University of Utah	U.S.A.	1997. 5.28
Utah State University	U.S.A.	1997. 5.29
Hanoi University of Science and Technology	Vietnam	1998. 6.26
Kasetsart University	Thailand	1999. 8. 5
Inner Mongolia Agricultural University	China	2000. 8. 8
University of Technology, Sydney	Australia	2000. 8.14
University of Pannonia	Hungary	2001. 3. 2
Andalas University	Indonesia	2001. 4.23
Bangladesh Agricultural University	Bangladesh	2001. 8.23
The University of Erfurt	Germany	2002.12. 4
Jilin University	China	2003. 5.20
Chiang Mai University	Thailand	2003. 8. 4
University of Dhaka	Bangladesh	2004. 6.17
King Mongkut's University of Technology Thonburi	Thailand	2005. 1.10
Huaqiao University	China	2005. 3.29

University / Government Agency	Country	Concluded
Tongji University	China	2006. 3.16
The University of Lampung	Indonesia	2006. 4.25
Inner Mongolia University	China	2007. 2. 6
Mokpo National University	South Korea	2008. 2.26
The University of Bayreuth	Germany	2008. 8.22
Benha University	Egypt	2009. 3.18
Korea University	South Korea	2010. 1.15
Kaunas University of Technology	Lithuania	2010. 3. 8
IPB University (Bogor Agricultural University)	Indonesia	2010.12. 2
Inner Mongolia Normal University	China	2011. 6. 8
Vytautas Magnus University	Lithuania	2012. 1.19
Gadjah Mada University	Indonesia	2012. 9.13
Sebelas Maret University	Indonesia	2013. 7. 8
Paris-Sud University	France	2014.12.16
Office of the Basic Education Commission, Ministry of Education	Thailand	2015. 3.10
Indian Institute of Technology, Guwahati	India	2014. 9.21
The National University of Malaysia	Malaysia	2016. 9.21
McGill University	Canada	2017. 3. 8
University of Alberta	Canada	2017. 3.21
Lakehead University	Canada	2017.10.11
Mariano Marcos State University	Philippines	2018. 9.10
Hue University	Vietnam	2018.11.12
Assam University	India	2018.11.20
The University of Salamanca	Spain	2018.11.26
University of Lille	France	2020. 4. 2

Faculty-Level Exchange

As of May 1, 2020

Institution	Country	Concluded	Faculty
Faculty of Science, Chulalongkorn University	Thailand	1994. 3 .15	Faculty of Applied Biological Sciences
Faculty of Agriculture, Khon Kaen University	Thailand	2000. 3 .27	Faculty of Applied Biological Sciences
Research and Development Institute, Khon Kaen University	Thailand	2000. 3 .27	Faculty of Applied Biological Sciences
School of Medicine, Zhejiang University	China	2000.12. 4	School of Medicine
Faculty of Medicine, Khon Kaen University	Thailand	2000.12.18	School of Medicine
College of Engineering, Chonnam National University	South Korea	2002. 2 . 6	Faculty of Engineering
Institute of Soil and Water Conservation, Chinese Academy of Sciences	China	2008. 8 .12	Center for Infrastructure Asset Management Technology and Research
National Veterinary Research and Quarantine Service, National Veterinary Research Institute	South Korea	2008.11. 4	Faculty of Applied Biological Sciences
Chungbuk National University College of Medicine	South Korea	2009. 4 .17	School of Medicine
Department of Geotechnical Engineering, China Institute of Water Resources and Hydropower Research	China	2009. 7 .24	Center for Infrastructure Asset Management Technology and Research
Faculty of Veterinary Medicine, Kafu El-Sheikh University	Egypt	2009.11.15	United Graduate School of Drug Discovery and Medical Information Sciences
Engineering Division, Yuhan College	South Korea	2010. 9 .29	Faculty of Engineering
Faculty of Mathematics and Natural Sciences, University of Bengkulu	Indonesia	2011. 7 .20	Faculty of Engineering
Shikshan Prasarak Mandal's Sir Parashurambhau College	India	2012. 9 .17	Faculty of Engineering
School of Geography and Geology, National University of Mongolia	Mongolia	2012.10.29	Faculty of Applied Biological Sciences
Faculty of Sciences, Chulalongkorn University	Thailand	2012.12. 6	United Graduate School of Agricultural Science
College of Engineering, Chonnam National University	South Korea	2013. 1 .18	Faculty of Engineering
School of Engineering, Carlos III University of Madrid	Spain	2013. 7 . 9	Faculty of Engineering
Pole EMC2, IRT Jules Verne	France	2014. 3 .13	Composite Materials Center
Faculty of Mechanical Engineering, Technische Universität Dortmund	Germany	2014. 6 .23	Faculty of Engineering
Science Departments, University of Mandalay	Myanmar	2014. 8 .25	Faculty of Engineering
Faculty of Mathematics and Natural Sciences, Brawijaya University	Indonesia	2014.12.16	Faculty of Engineering
Science Departments, Yadanabon University	Myanmar	2014.12.16	Faculty of Engineering
Science Departments, Meiktila University	Myanmar	2014.12.16	Faculty of Engineering
School of Engineering, Dedan Kimathi University of Technology	Kenya	2014.12.16	Faculty of Engineering
Faculty of Engineering and Science, Universiti Tunku Abdul Rahman	Malaysia	2014.12.16	Faculty of Engineering
College of Engineering, Kyungpook National University	South Korea	2015. 2 .27	Faculty of Engineering
Faculty of Education, Srinakharinwirot University	Thailand	2015. 3 .17	Faculty of Education
National Heart, Lung and Blood Institute, National Institutes of Health	U.S.A.	2015. 3 .18	Faculty of Engineering
Centre for Solar Energy Hydrogen Research Baden-Württemberg	Germany	2015. 3 .20	Faculty of Engineering
University of Arkansas- Fort Smith	U.S.A.	2015. 6 . 8	Faculty of Regional Studies
Thuyloi University	Vietnam	2015. 6 .25	United Graduate School of Agricultural Science
Bung Hatta University	Indonesia	2015. 7 .30	Faculty of Engineering
School of Life Sciences and Technology, Institut Teknologi Bandung	Indonesia	2015. 8 .11	United Graduate School of Agricultural Science
The College of Basic and Applied Sciences, University of Ghana	Ghana	2015. 8 .20	Faculty of Applied Biological Sciences
The College of Basic and Applied Sciences, University of Ghana	Ghana	2015. 8 .20	United Graduate School of Veterinary Sciences
Faculty of Mathematics and Natural Sciences, State University of Padang	Indonesia	2015. 9 .18	Faculty of Engineering
Université Sciences Humaines et Sociales - Lille 3	France	2015.10. 1	Faculty of Regional Studies
Karlsruhe University of Education	Germany	2015.10.21	Faculty of Education
Faculty of Environmental Engineering, Cracow University of Technology	Poland	2015.11.30	Faculty of Engineering / River Basin Research Center
Faculty of Science, Chulalongkorn University	Thailand	2015.12. 2	Faculty of Engineering
Shanxi Normal University	China	2015.12. 7	Faculty of Education
University of New South Wales	Australia	2016. 4 .25	Faculty of Engineering
John A. Burns School of Medicine, University of Hawai'i	U.S.A.	2016. 8.24	School of Medicine
Faculty of Engineering, Science and Technology, National University of Timor Lorosa'e	East Timor	2016. 8.29	Faculty of Engineering
USF Health, University of South Florida	U.S.A.	2016.10.20	School of Medicine / Health Administration Center
Faculty of Agriculture, University of Rajshahi	Bangladesh	2016.12.27	Faculty of Applied Biological Sciences
Faculty of Engineering School of Energy and Mechanical Engineering, Nanjing Normal University	China	2017.7.17	Faculty of Engineering
Science Department, Dagon University	Myanmar	2017.7.21	Faculty of Engineering
UiT-The Arctic University of Norway, Tromsø	Norway	2017.9.27	River Basin Research Center
Faculty of Science, Technology and Environment, The University of the South Pacific	Fiji	2017.12.1	Faculty of Applied Biological Sciences
Faculty of Civil Engineering and Planning, Faculty of Mathematic and Natural Sciences, Islamic University of Indonesia	Indonesia	2018.2.23	Faculty of Engineering
Faculty of Forest Science, National University of Laos	Laos	2018.3.21	United Graduate School of Agricultural Science
Faculty of Science, Universiti Brunei Darussalam	Brunei	2018.6.15	Faculty of Engineering
Kazan State Medical Academy	Russia	2018.12.10	Faculty of Applied Biological Sciences
Centre for Agricultural Research, Hungarian Academy of Sciences	Hungary	2018.12.10	Faculty of Applied Biological Sciences
Faculty of Engineering, University of Zambia	Zambia	2019.1.30	Faculty of Engineering
Seoul National University College of Medicine	South Korea	2019.4.11	School of Medicine
The University of Chicago Medicine	USA	2019.6.5	School of Medicine
Frontier Mold and Die Research and Development Center, National Kaohsiung University of Science and Technology	Taiwan	2019.12.27	Center for Advanced and Smart Die Engineering Technology
Faculty of Teacher's Training and Education, University of Riau	Indonesia	2020.3.3	Faculty of Engineering
College of Engineering, Chang Gung University	Taiwan	2020.3.18	Faculty of Engineering
Centre of Medical - Pharmaceutical Science & Technology Services, Thai Binh University of Medicine and Pharmacy	Vietnam	2020.3.31	Life Science Research Center
Centre of Medical - Pharmaceutical Science & Technology Services, Thai Binh University of Medicine and Pharmacy	Vietnam	2020.3.31	United Graduate School of Drug Discovery and Medical Information Sciences

■ Researchers Inbound / Outbound

Number of Foreign Researchers and Visitors Accepted

2019

Foreign Researchers	14
Foreign Visitors	148

Number of Gifu University Faculty's Overseas Travels

2019

Business Trip	500
Training	21

* excluding part-time staff

■ International House

Name	Room Type		
	Rooms		Others
International House (1-1 Yanagido, Gifu City)	Building A	31 Single Rooms	Conference Rooms, Training Rooms, Lounge
		2 Couple Rooms	
		3 Family Rooms	
	Building B	38 Single Rooms	Multipurpose Room, Japanese Room
		12 Couple Rooms	
		4 Family Rooms	
	Building C	11 Single Rooms	
		2 Couple Rooms	
		4 Family Rooms	

■ Overseas Office

Gifu University has established overseas offices aiming to promote exchange with international students and researchers.

Gifu University Shanghai Office (China)

999-45 Yuquing Road, Shanghai 201315, People's Republic of China

Tel: 86-21-58124777

Fax: 86-21-58124778

Gifu University Dhaka Office (Bangladesh)

University of Dhaka

Ramna, Dhaka 1000, Bangladesh

Gifu University Office in Sebelas Maret University (Indonesia)

Sebelas Maret University

Jalan Ir. Sutami 36 A, Surakarta, 57126, Indonesia

Program Office between Gifu University and Guangxi University (China)

Guangxi University

100 Daxue Road, Nanning, Guangxi, People's Republic of China

■ Board Members

Members of the Board	
President	MORIWAKI Hisataka
Vice President (General Manager and International Affairs)	SUGIYAMA Makoto
Vice President (Planning, Academic Affairs, Evaluation and Fund)	FUKUI Hirokazu
Vice President (Academic Research, Industry-Academia Collaboration and Information)	WANG Zhigang
Vice President (Diversity, Human Rights and Library)	HAYASHI Masako
Vice President (Public Relations and Regional Medicine)	IWAMA Toru
Vice President (General Affairs and Finance), Director of Administration	MATSUDA Noriaki
Director of the University Hospital	YOSHIDA Kazuhiro

Members of Education & Research Council	
Chancellor	MATSUO Seichi
Executive Trustee (President of Gifu University)	MORIWAKI Hisataka
Vice President (General Manager and International Affairs)	SUGIYAMA Makoto
Vice President (Planning, Academic Affairs, Evaluation and Fund)	FUKUI Hirokazu
Vice President (Academic Research, Industry-Academia Collaboration and Information)	WANG Zhigang
Vice President (Diversity, Human Rights and Library)	HAYASHI Masako
Vice President (Public Relations and Regional Medicine)	IWAMA Toru
Vice President (General Affairs and Finance), Director of Administration	MATSUDA Noriaki
Director of the University Hospital	YOSHIDA Kazuhiro
Dean of the Faculty of Education	BEPPU Satoshi
Professor of the Faculty of Education	YAMADA Masahiro
Dean of the Faculty of Regional Studies	HORASAWA Shin
Professor of the Faculty of Regional Studies	WASADA Hiroaki
Dean of the Graduate School of Medicine	NAKASHIMA Shigeru
Professor of the Graduate School of Medicine	AKIYAMA Haruhiko
Professor of the School of Medicine	ADACHI Hisako
Dean of the Faculty of Engineering	MURAI Toshiaki
Professor of the Faculty of Engineering	KAMABE Hiroshi
Dean of the Faculty of Applied Biological Sciences, Dean of the Graduate School of Natural Science and Technology	MITSunAGA Tohru
Professor of the Faculty of Applied Biological Sciences	SHIMIZU Yasutake
Dean of the Joint Graduate School of Veterinary Sciences	UNNO Toshihiro
Dean of the United Graduate School of Agricultural Science	HIRAMATSU Ken
Dean of the United Graduate School of Veterinary Sciences	ASAI Tetsuo
Dean of the United Graduate School of Drug Discovery and Medical Information Sciences	UEDA Hiroshi
Director of the Center for Collaborative Study with Community	MASUKAWA Koichi
Director of the River Basin Research Center	LI Fusheng
Director of the Health Administration Center	YAMAMOTO Mayumi
Executive Director of the Organization for Promotion of Globalization	UEMATSU Yoshihiko
Professor of the Organization for Promotion of Globalization	HASHIMOTO Shingo
Professor of the Academic Research & Industry-Academia-Government Collaboration	KAMBARA Shinji

Deans & Directors		
Faculty of Education	Dean	BEPPU Satoshi
	Associate Dean	MASHIKO Norifumi
	Associate Dean	YAMADA Masahiro
	Associate Dean	IMAMURA Mitsuyuki
	General Manager of the Gifu University Faculty of Education Affiliated Compulsory School System (Elementary-Junior High)	SUMOTO Yoshio
	Principal of the Gifu University Faculty of Education Affiliated Compulsory School System (Elementary-Junior High)	KOGA Eiichi
Faculty of Regional Studies	Dean	HORASAWA Shin
	Associate Dean	WASADA Hiroaki
	Associate Dean	UCHIDA Masaru
Graduate School of Medicine / School of Medicine	Dean	NAKASHIMA Shigeru
	Associate Dean	AKIYAMA Haruhiko
	Associate Dean	YAMAGUCHI Shun
	Associate Dean	ADACHI Hisako
University Hospital	Director	YOSHIDA Kazuhiro
	Associate Director	DOI Kiyoshi
	Associate Director	AKIYAMA Haruhiko
	Associate Director	SHIMIZU Masahito
	Associate Director	MORISHIGE Kenichiro
	Associate Director	HIROSE Yasuko
Faculty of Engineering	Dean	MURAI Toshiaki
	Associate Dean	KAMABE Hiroshi
	Associate Dean	MIYASAKA Takeshi
	Associate Dean	UCHIDA Yuichi
	Director of the Center for Infrastructure Asset Management Technology and Research	SAWADA Kazuhide
	Director for the Applied Meteorological Research Center	YOSHINO Jun

Faculty of Applied Biological Sciences	Dean	mitsunaga Tohru
	Associate Dean	SHIMIZU Yasutake
	Associate Dean	NISHIZU Takahisa
	Associate Dean	YAMADA Kunio
	Director of the Gifu Field Science Center	OHBA Yasunori
Graduate School	Director of the Animal Medical Center	MORI Takashi
	Dean of the Natural Science and Technology	mitsunaga Tohru
	Dean of the Joint Graduate School of Veterinary Sciences	UNNO Toshihiro
	Dean of the United Graduate School of Agricultural Science	HIRAMATSU Ken
	Dean of the United Graduate School of Veterinary Sciences	ASAI Tetsuo
	Dean of the United Graduate School of Drug Discovery & Medical Information Sciences	UEDA Hiroshi
Institute for Advanced Study	Director	WANG Zhigang
	Vice Director	ISHIDA Hideharu
	Vice Director	TANAKA Kaori
	Vice Director	ITAYA Yoshinori
	Director of the Center for Highly Advanced Integration of Nano and Life Sciences	ISHIDA Hideharu
	Director of the Intelligent Production Technology Research & Development Center for Aerospace	KOMAKI Hirokazu
	Director of the Gifu Renewable Energy System Research Center	ITAYA Yoshinori
	Director of the Center for Advanced and Smart Die Engineering Technology	YAMASHITA Minoru
	Director of the Gu Composites Center	TAKENO Akiyoshi
	Director of the Regional Adaptation Research Center	HARADA Morihiro
	Director of the Co-Design Research Center	mitsui Sakae
	Director of the Regional Disaster Mitigation Research Center	NOJIMA Nobuoto
	Director of the Center for Conservation of Microbial Genetic Resources	TANAKA Kaori
	Director of the Artificial Intelligence Advanced Research Center	KATO Kunihiro
	Director of the Life Science Research Center	TANAKA Kaori
Center for Collaborative Study with Community River Basin Research Center	Director of the Research Equipment Sharing Promotion Center	OHYA Yutaka
	Director of the Technical Center of Gifu University	WANG Zhigang
	Director	MASUKAWA Koichi
Health Administration Center	Director	LI Fusheng
Collaboration Center for Medical Education Medical Education Development Center	Director	YAMAMOTO Mayumi
Library	Director of the Medical Education Development Center	FUJISAKI Kazuhiko
	Director of the University Library	HAYASHI Masako
	Director of the Medical Library	NAGAOKA Hitoshi
Organization for Promotion of Higher Education and Student Support	Director-General	FUKUI Hirokazu
	Vice Director-General	KOKETSU Mamoru
	Vice Director-General	YAMADA Toshihiro
	Vice Director-General	YOKOTA Yasunari
Academic Research & Industry-Academia-Government Collaboration	Director	WANG Zhigang
Organization for Promotion of Globalization	Executive Director	UEMATSU Yoshihiko
Information & Communications	Director	WANG Zhigang

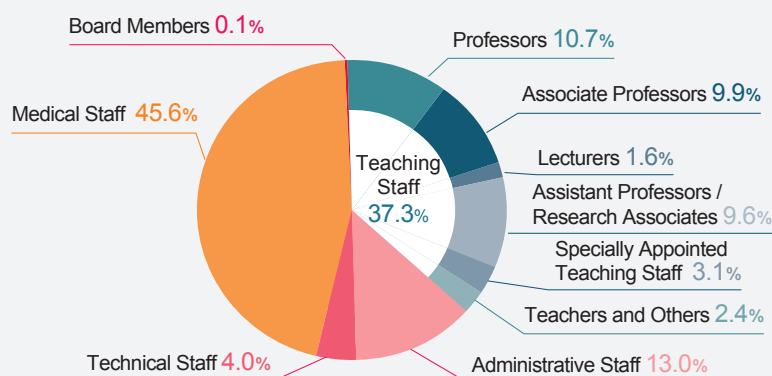
■ Number of Board Members, Teaching and General Staff

As of May 1, 2020

Classification	Board Members	Teaching Staff							General Staff				Total
		Professors	Associate Professors	Lecturers	Assistant Professors	Research Associates	Specialy Appointed Teaching Staff	Affiliated School Teachers	Administrative Staff	Administrative Staff (additional post)	Technical Staff	Medical Staff	
President	1												1
Vice President	1 <5>												1
Administration									133 (48)	12 (5)	19 (2)		164 (55)
Faculty of Education		38 (4)	39 (8)		7 (3)				15 (8)				99 (23)
Graduate School of Education		5 (1)	4		1		3						13 (1)
Gifu University Faculty of Education Affiliated Compulsory School System (Elementary - Junior High)								56 (17)					56 (17)
Faculty of Regional Studies		16 (3)	15 (4)	1	6 (2)				8 (4)				46 (13)
School of Medicine		8 (5)	11 (9)		13 (11)	1 (1)	1						34 (26)
Graduate School of Medicine		33 (3)	28 (4)	6 (2)	32 (7)		20 (4)		30 (13)		3 (3)		152 (36)
Medical Education Development Center		2	1		3 (1)		1 (1)						7 (2)
University Hospital		3	19	31 (6)	78 (10)				71 (34)		17 (5)	1,064 (774)	1,283 (829)
Faculty of Engineering		75 (5)	60 (4)		42 (5)		4		24 (13)				206 (27)
Faculty of Applied Biological Sciences		43 (1)	35 (9)		24 (8)		3		21 (9)		29 (17)		155 (44)
United Graduate School of Agricultural Science		1											1
United Graduate School of Veterinary Sciences		1											1
United Graduate School of Drug Discovery and Medical Information Sciences		1			1		3						5
Organization for Promotion of Higher Education and Student Support			2 (1)				9 (1)						11 (2)
Academic Research & Industry-Academia-Government Collaboration							2						2
Institute for Advanced Study		7 (1)	4		6		20 (3)				25 (2)		61 (6)
Organization for Promotion of Glocalization		3 (1)	1 (1)				3 (1)						7 (3)
River Basin Research Center		6	7 (3)		2	1							16 (3)
Health Administration Center		2 (1)			2 (1)							3 (3)	7 (5)
Center for Collaborative Study with Community		1	1		3 (1)								5 (1)
Head Office for Information Management		2											2
New Faculty Preparation Office		1	4										5
Institutional Research Office							1						1
Gender Equality Promotion Office							1 (1)						1 (1)
Total	2 <5>	248 (25)	231 (43)	38 (8)	220 (49)	2 (1)	71 (11)	56 (17)	302 (129)	12 (5)	93 (29)	1,067 (777)	2,342 (1,094)

() indicates the number of women and is included in the total. < > indicates the number of staff holding additional posts and is separately calculated (not included in the total). The number of Specially Appointed Teaching Staff shown in the table represents the full-time positions only.

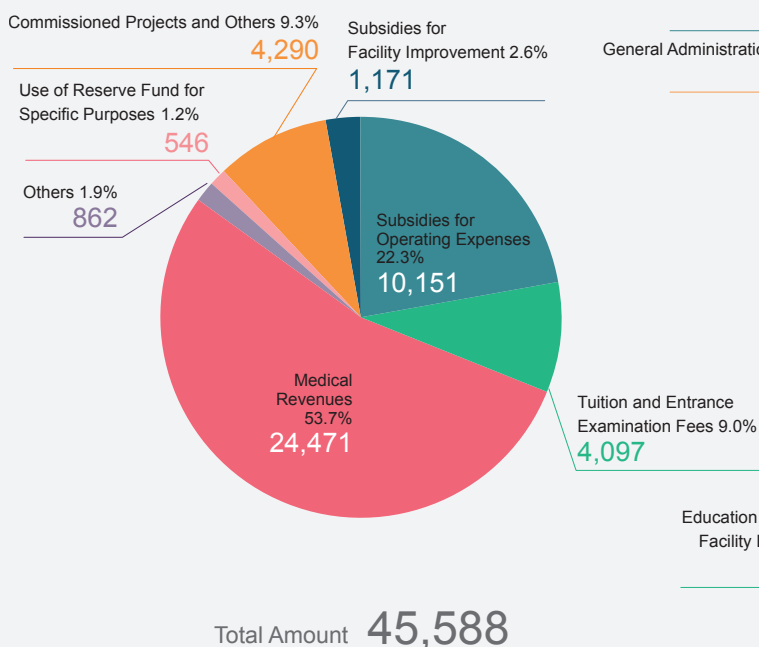
Component Ratio of Teaching and General Staff



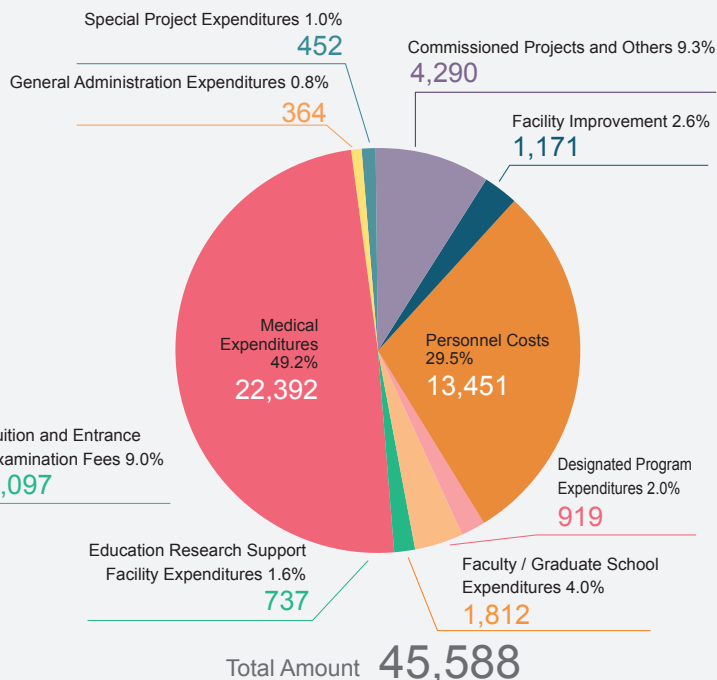
Budget

Gifu University Budget for 2020 (Unit: Million Yen)

[Revenues]



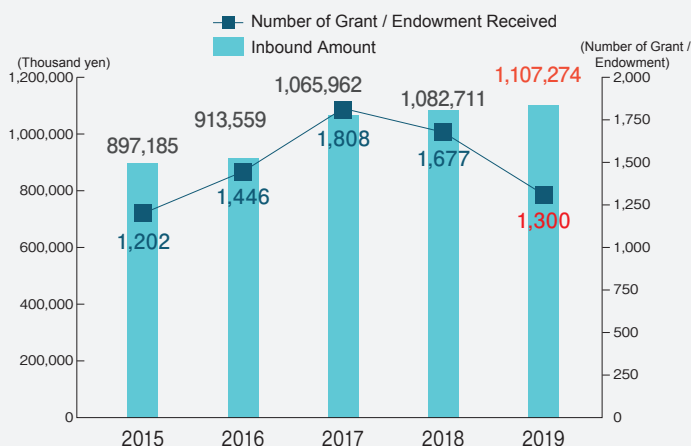
[Expenditures]



Endowment

2019 Grant and Endowment (Unit: Thousand Yen)

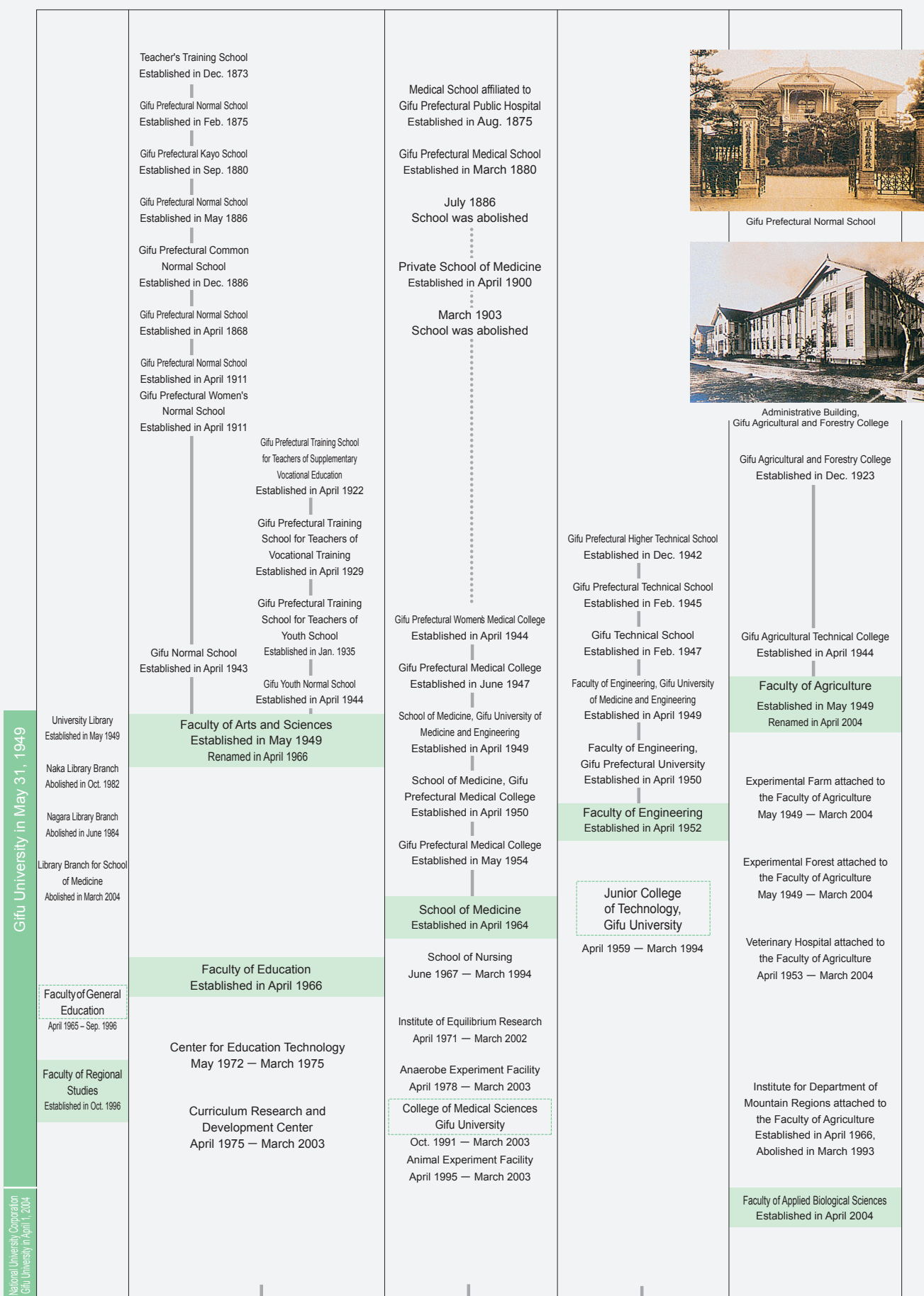
Classification	Number of Grant / Endowment Received	Amount
Gifu University Fund	277	44,417
Administration	2	6,784
Faculty of Education	24	16,373
Affiliated School of the Faculty of Education	8	36,339
Faculty of Regional Studies	27	2,488
School of Medicine	381	546,939
University Hospital	103	123,226
Faculty of Engineering	210	129,644
Faculty of Applied Biological Sciences	207	73,872
United Graduate School of Drug Discovery and Medical Information Sciences	5	30,760
Organization for Promotion of Higher Education and Student Support	1	500
Organization for Research and Community Development	19	81,344
Head Office for Information Management	1	700
Library	8	45
Center for Collaborative Study with Community	2	400
River Basin Research Center	24	13,290
Health Administration Center	1	150
Total	1,300	1,107,274



Fractions smaller than a thousand yen rounded down. It includes 254.5 million for the Departments of Integral Medicine in the School of Medicine ¥20 million for the endowed research division in the Faculty of Applied Biological Sciences and ¥25 million for the endowed research division in the Graduate School of Drug Discovery and Medical Information Science.

* The expenses do not always coincide with the actual amount because fractions smaller than a thousand yen is rounded down.

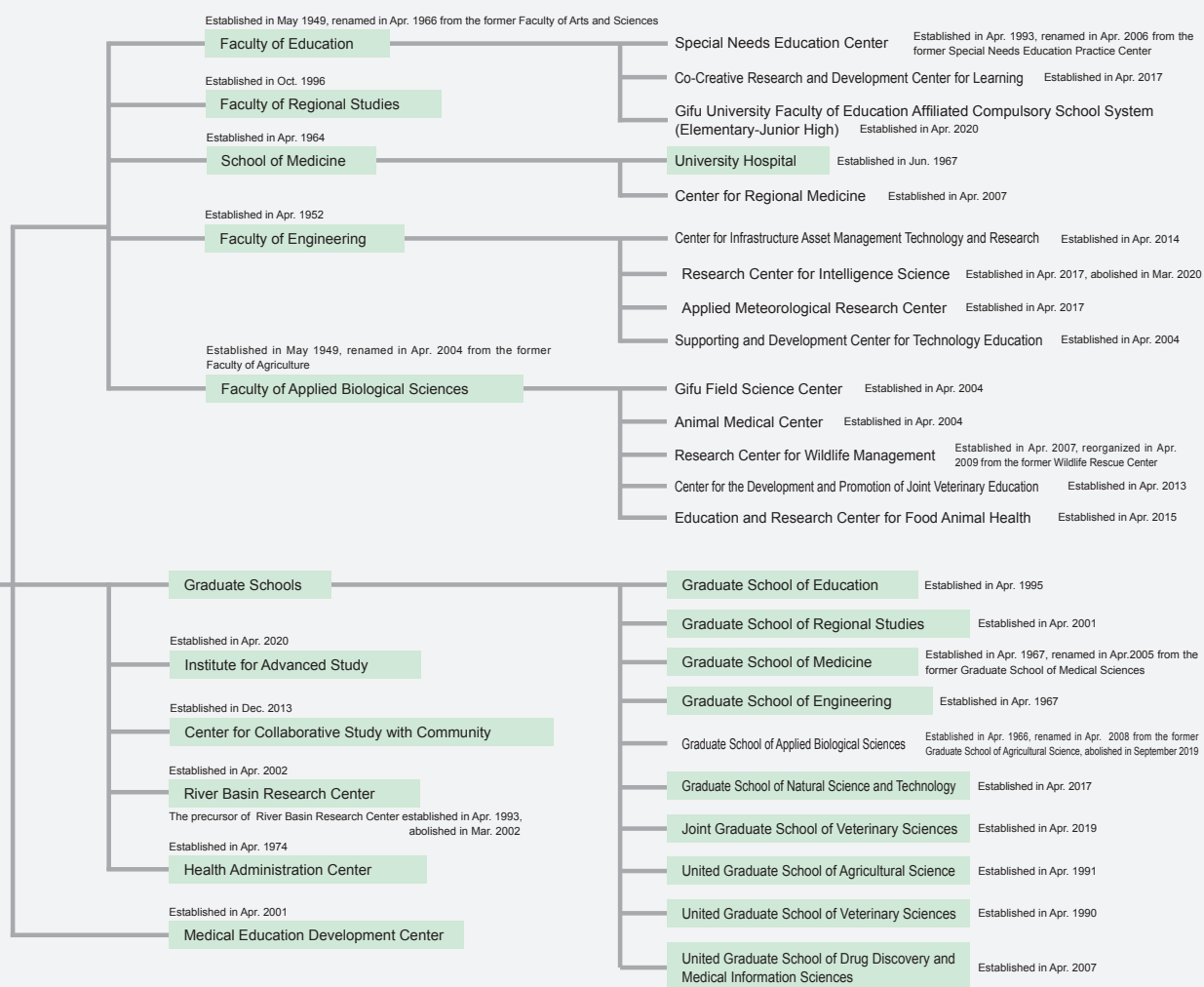
History



Presidents Past and Present

1 st President	AOKI Bunichiro	May 31, 1949	—	July 1, 1954
Acting President	TAKAHASHI Teizo	July 1, 1954	—	May 31, 1955
2 nd President	YOSHII Yoshiji	June 1, 1955	—	May 31, 1961
3 rd President	SHIKATA Hiroshi	June 1, 1961	—	May 31, 1967
4 th President	IMANISHI Kinji	June 1, 1967	—	May 31, 1973
5 th President	HAYASHI Kaneo	June 1, 1973	—	May 31, 1977
6 th President	TACHI Masatomo	June 1, 1977	—	May 31, 1983
7 th President	HAYANO Saburo	June 1, 1983	—	May 31, 1989
8 th President	KATO Akira	June 1, 1989	—	May 31, 1995
9 th President	KINJO Toshio	June 1, 1995	—	May 31, 2001
10 th President	KUROKI Toshio	June 1, 2001	—	March 31, 2008
11 th President	MORI Hideki	April 1, 2008	—	March 31, 2014
12 th President	MORIWAKI Hisataka	April 1, 2014	—	Present

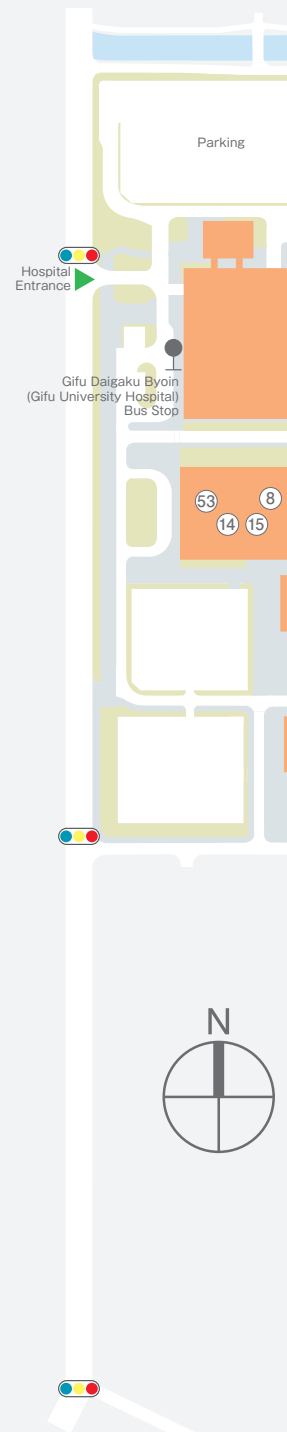
Reestablished as Tokai National Higher Education and Research System Gifu University in April 1, 2020



Campus Map

As of May 1, 2020

- | | | | |
|----|--|----|--|
| 1 | Central Administration Office | 46 | Center for Highly Advanced Integration of Nano and Life Sciences (G-CHAIN) |
| 2 | Faculty of Education | 47 | Gu Composites Center |
| 3 | Art and Technology Education Building | 48 | Regional Disaster Mitigation Research Center |
| 4 | Music Building | 49 | Center for Conservation of Microbial Genetic Resources |
| 5 | Health and Physical Education Building | 50 | Innovation Hub for Smart Mold Processing |
| 6 | Special Support Education Center | 51 | River Basin Research Center |
| 7 | Faculty of Regional Studies | 52 | Life Science Research Center (Division of Genomics Research) |
| 8 | Graduate School of Medicine / School of Medicine | 53 | Life Science Research Center (Division of Anaerobe Research) |
| 9 | Life Science Building | 54 | Life Science Research Center (Division of Animal Experiment) |
| 10 | Education and Supporting Services Building | 55 | Life Science Research Center (Division of Instrumental Analysis) |
| 11 | Memorial Hall | 56 | Life Science Research Center (Division of Radioisotope Experiment) |
| 12 | Medical Library | 57 | Gifu Prefectural Research Institute for Food Sciences (3F Gifu University Industry-Government-Academia Collaboration Area) |
| 13 | School of Medicine (Nursing Course) | 58 | Museum of Infrastructure |
| 14 | Medical Education Development Center | 59 | Head Office for Information Management (Information Management Core) |
| 15 | Center for Regional Medicine | 60 | Organization for Promotion of Globalization (GU-GLOCAL) |
| 16 | University Hospital | 61 | Center for Japanese Language and Culture |
| 17 | Faculty of Engineering | 62 | Co-creative Research and Development Center for Learning |
| 18 | Mechanics Building No.1 | 63 | Center for Collaborative Study with Community |
| 19 | Mechanics Building No.2 | 64 | Health Administration Center |
| 20 | Mechanics Building No.3 | 65 | University Hall |
| 21 | Chemistry Building | 66 | International House |
| 22 | Disaster Prevention Engineering Building | 67 | Yanagido Hall |
| 23 | Civil Engineering Experiments Building | 68 | Kurono Student Dormitory |
| 24 | High Voltage Experiments Building | 69 | Hohoemi (nursery) |
| 25 | Mechanics Workshop Facilities | 70 | Auditorium |
| 26 | Supporting and Development Center for Technology Education | 71 | Gymnasium |
| 27 | Center for Infrastructure Asset Management Technology and Research | 72 | Japanese Martial Arts Gymnasium |
| 28 | Faculty of Applied Biological Sciences | 73 | Second Gymnasium |
| 29 | Administrative Building, Gifu Field Science Center | 74 | Dining Hall No.2 |
| 30 | Gifu Field Science Center | 75 | Gifu Pharmaceutical University Building |
| 31 | Animal Medical Center | 76 | Gifu Foundation for Research Promotion of Healthy Aging and Drug Discovery (7th Fl.) |
| 32 | Research Center for Wildlife Management | 77 | United Graduate School of Drug Discovery and Medical Information Sciences (8th Fl.) |
| 33 | Center for the Development and Promotion of Joint Veterinary Education | 78 | Gifu Disaster Mitigation Center |
| 34 | Education and Research Center for Food Animal Health | 79 | Athletic Field |
| 35 | United Graduate School of Agricultural Science | 80 | Ballpark |
| 36 | United Graduate School of Veterinary Sciences | 81 | Soccer Field |
| 37 | University Library | 82 | Rugby Field |
| 38 | General Research Building I | 83 | Tennis Court |
| 39 | General Research Building II | 84 | Basketball Court |
| 40 | Organization for Promotion of Higher Education and Student Support | 85 | Volleyball Court |
| 41 | General Education Building | 86 | Handball Court |
| 42 | Academic Research & Industry-Academia-Government Collaboration | 87 | Swimming Pool |
| 43 | Institute of Advanced Study | 88 | Kyudo Archery Field |
| 44 | Gifu Renewable Energy System Research Center | 89 | Equestrian Ground |
| 45 | Center for Advanced and Smart Die Engineering Technology (G-CADET) | 90 | Convenience Store |



0 25 50 75 100m



■ Area of Campus and Affiliated Facility

As of May 1, 2020

Location	Faculty and Facility	Area (m ²)	Floor Area (m ²)
Yanagido Campus	Central Administration Building	510,567	4,000
	Faculty of Education		18,686
	Faculty of Regional Studies		3,680
	Faculty of Regional Studies / General Education Building		13,433
	School of Medicine (Nursing Course)		7,197
	Faculty of Engineering		48,785
	Faculty of Applied Biological Sciences		27,842
	United Graduate School of Agricultural Science / United Graduate School of Veterinary Sciences		2,301
	Animal Medical Center		3,297
	University Library (including Auditorium)		8,853
	Academic Research & Industry-Academia-Government Collaboration		7,825
	River Basin Research Center		1,112
	Information Management Core		2,311
	Center for Collaborative Study with Community		336
	International House		4,285
	University Hall, Dining Hall No.2, Yanagido Hall		6,465
	Facility for Sports and Extracurricular Activities		6,513
	Kurono Student Dormitory		5,045
	Hohoemi (Nursery)		618
	Drainage Treatment Facility, Central Machine Room, Relay Pump Room, Outdoor Extra High Tension Power Room		1,847
	General Research Building II		5,880
	Gifu Central Livestock Hygiene Service Center		(819)
	Gifu Prefectural Research Institute for Food Sciences		(826)
	School of Medicine / University Hospital	122,885	114,424
	United Graduate School of Drug Discovery and Medical Information Sciences, Gifu Foundation for Research Promotion of Healthy Aging and Drug Discovery (7th and 8th Fl. of Gifu Pharmaceutical University Building)		(1,305)
	School of Medicine Parking Lots	(11,421)	
	Subtotal	(11,421) 633,452	(2,950) 294,735

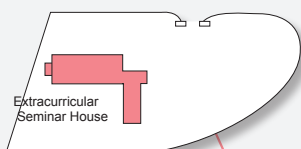
Nagara	Extracurricular Seminar House	3,396	1,304
Yoshino machi	Gifu University Satellite Campus		(591)
Kano	Gifu University Faculty of Education Affiliated Compulsory School System (Elementary-Junior High)	28,547	13,531
Hirui	Hayano Residence Seminar House	5,538	228
Minokamo	Gifu Field Science Center Minokamo Farm	(18) 95,831	1,690
Hagiwara	Gifu Field Science Center Kurayama Forest	(2,461) 6,424,445	1,103
Takayama	Takayama Field Station, River Basin Research Center	(207,697)	778
Others	Staff Dormitory	18,230	8,813

Total () indicates the areas of land on lease. The number above the parenthesis does not include the land on lease.		(221,597) 7,209,434	(3,541) 322,182
---	--	------------------------	--------------------

Extracurricular Seminar House
(Nagara Ryutocho, Gifu City)
5 km from Gifu University, 15 minutes by car



Extracurricular Seminar House



Gifu University (1-1 Yanagido, Gifu City)

7 km from JR Gifu Station.
20 minutes by car
20 km from Gifu-Hashima Station
(Shinkansen Line). 40 minutes by car

Hayano Residence
Seminar House
(Hiruicho, Ogaki City)
6 km from JR Ogaki Station.
15 minutes by car



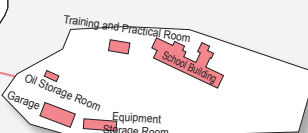
Takayama Field Station,
River Basin Research Center
(Iwaimachi, Takayama City)
22 km from JR Takayama Station. 50 minutes by car



Takayama Field Station

River Basin
Research Center

Experimental Site



Kuraiyama Forest, Gifu Field Science Center
(Faculty of Applied Biological Sciences)
(Hagiwaracho, Gero City)
10 km from JR Joro Station. 20 minutes by car



Kuraiyama Forest

Minokamo Farm, Gifu Field Science Center
(Faculty of Applied Biological Sciences)
(Makino, Minokamo City)
6 km from JR Kobi Station, 10 minutes by car



Minokamo Farm

Gifu University Satellite Campus (4th
floor of the East Tower at Gifu Skywing
37, 6-31 Yoshinomachi, Gifu City)
Near JR Gifu Station

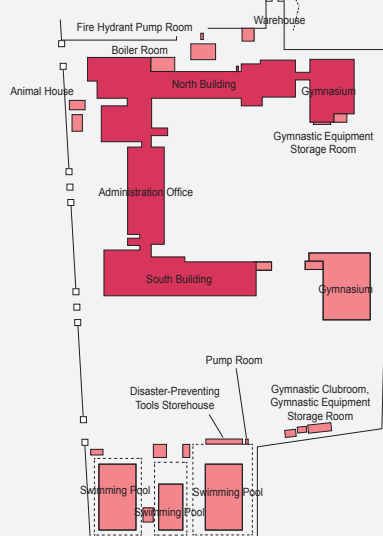
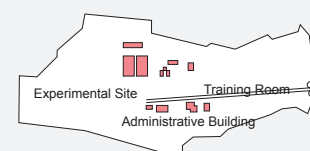


Gifu University Faculty of Education Affiliated Compulsory School System
(Elementary-Junior High)
1.2 km from JR Gifu Station. 5 minutes by car



North Building

South Building



■ Location / Access

Faculty / Center		Telephone		Fax		Postcode	Address
Yanagido Campus	Central Administration Office	+81-(0)58	230-1111	+81-(0)58	293-2021	501-1193	1-1 Yanagido, Gifu City
	Faculty of Education / Graduate School of Education		293-2203		293-2207		
	• Special Needs Education Center	+81-(0)58	293-2350	+81-(0)58	293-2355		
	• Co-Creative Research and Development Center for Learning		293-2345		293-3384		
	Faculty of Regional Studies / Graduate School of Regional Studies	+81-(0)58	293-3002	+81-(0)58	293-3008		
	Faculty of Engineering / Graduate School of Engineering		293-2365		293-2389		
	• Center for Infrastructure Asset Management Technology and Research	+81-(0)58	293-2419	+81-(0)58	293-2419		
	• Applied Meteorological Research Center		293-2365		293-2389		
	• Supporting and Development Center for Technology Education		293-2374		293-2389		
	Faculty of Applied Biological Sciences		293-2834		293-2840		
	• Gifu Field Science Center		293-2972		293-2977		
	• Animal Medical Center	+81-(0)58	293-2962	+81-(0)58	293-2964		
	• Research Center for Wildlife Management		293-2959		293-2959		
	• Center for the Development and Promotion of Joint Veterinary Education		293-3408		293-2841		
	• Education and Research Center for Food Animal Health		293-2834		293-2840		
	Graduate School of Natural Science and Technology	+81-(0)58	293-2834	+81-(0)58	293-2840		
	Joint Graduate School of Veterinary Sciences	+81-(0)58	293-2987	+81-(0)58	293-2992		
	United Graduate School of Agricultural Science	+81-(0)58	293-2984	+81-(0)58	293-2992		
	University Library	+81-(0)58	293-2184	+81-(0)58	293-2194		
	Center for Collaborative Study with Community	+81-(0)58	293-3880	+81-(0)58	293-3881		
	River Basin Research Center	+81-(0)58	293-2061	+81-(0)58	293-2062		
	Organization for Promotion of Globalization						
	• Center for Japanese Language and Culture	+81-(0)58	293-3351	+81-(0)58	293-2143		
	Health Administration Center	+81-(0)58	293-2174	+81-(0)58	293-2177		
	Organization for Promotion of Higher Education and Student Support	+81-(0)58	293-2133	+81-(0)58	293-3382		
	Academic Research & Industry-Academia-Government Collaboration		293-2025		293-2022		
	• Life Science Research Center		293-3171		293-3172		
	• Research Equipment Sharing Promotion Center		293-3169		293-2022		
	• Center for Highly Advanced Integration of Nano and Life Sciences (G-CHAIN)		293-2025		293-2022		
	• Gifu Renewable Energy System Research Center	+81-(0)58	293-2685	+81-(0)58	293-2734		
	• Center for Advanced and Smart Die Engineering Technology (G-CADET)		293-2496		293-2496		
	• Gu Composites Center		293-3184		293-2022		
	• Regional Disaster Mitigation Research Center		293-3890		293-3891		
	• Center for Conservation of Microbial Genetic Resources		230-6184		230-6185		
	School of Medicine / Graduate School of Medicine	+81-(0)58	230-6000	+81-(0)58	230-6060	501-1194	
	University Hospital	+81-(0)58	230-6008	+81-(0)58	230-6080		
	Medical Education Development Center	+81-(0)58	230-6470	+81-(0)58	230-6468		
	United Graduate School of Drug Discovery and Medical Information Sciences	+81-(0)58	230-7602	+81-(0)58	230-7604		
Yoshino	Gifu University Satellite Campus	+81-(0)58	212-0390	+81-(0)58	212-0391	500-8844	4th floor of the East Tower at Gifu Skywing 37, 6-31 Yoshinomachi, Gifu City
Kano	Gifu University Faculty of Education Affiliated Compulsory School System (Elementary-Junior High)	+81-(0)58	271-3545 271-3507	+81-(0)58	271-1816	500-8482	74 Kano Otemachi, Gifu City
Ogaki	Hayano Residence Seminar House	+81-(0)584	71-0151	+81-(0)584	71-0151	503-2216	1777 Hiruicho, Ogaki City
Mino	Minokamo Farm, Gifu Field Science Center (Faculty of Applied Biological Sciences)	+81-(0)574	25-2807	+81-(0)574	25-2807	505-0016	1918-1 Makino, Minokamo City
Gero	Kuraiyama Forest, Gifu Field Science Center (Faculty of Applied Biological Sciences)	+81-(0)576	54-1611	+81-(0)576	54-1477	509-2501	Yamanokuchi, Hagiwaracho, Gero City
Takayama	Takayama Field Station, River Basin Research Center	+81-(0)577	31-1005	+81-(0)577	31-1016	506-0815	919-47 Iwaimachi, Takayama City

Access to Gifu University

By Car

Meishin Expressway

◦From Gifu-Hashima Interchange (20 km)

Exit from the Gifu Hashima Interchange to Gifu Kanjo Sen (Gifu Loop Route): 40 minutes

◦From Ichinomiya Interchange (25 km)

Exit from the Ichinomiya Interchange to Route 22, and travel north to the Central Gifu City: 50 minutes

Tokai-Hokuriku Expressway

◦From Gifu-Kakamigahara Interchange (20 km)

Exit from the Gifu-Kakamigahara Interchange to Route 21, and travel west to Gifu Kanjo Sen (Gifu Loop Route): 40 minutes

By Bus/Taxi

From JR Gifu Station/Meitetsu Gifu Station to Gifu University (7 km)

◦30 minutes by Gifu Bus ◦20 minutes by taxi

By Train

Access from JR Nagoya Station/Meitetsu Nagoya Station/Kintetsu Nagoya Station

◦From JR Nagoya Station to JR Gifu Station (via Tokaido Main Line): 18 minutes by the new rapid train

◦From Meitetsu Nagoya Station to Meitetsu Gifu Station (via Meitetsu Nagoya Main Line): 29 minutes by the limited express train

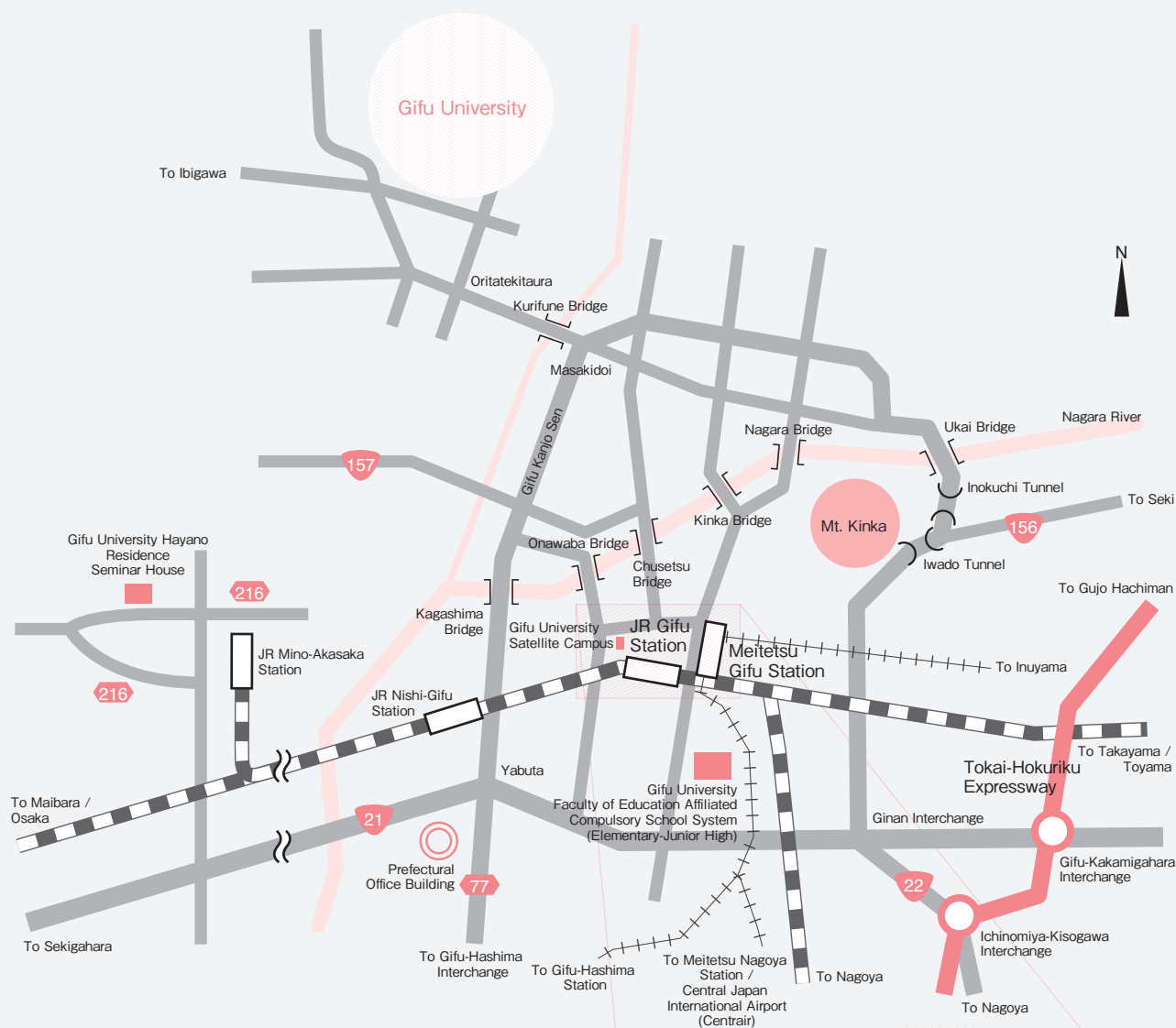
Access from Gifu-Hashima Station (Shinkansen Line)

◦Walk to Meitetsu Shin Hashima Station in front of Gifu-Hashima Station, and take a train from Meitetsu Shin Hashima Station to Meitetsu Gifu Station (via Meitetsu Hashima Line): 30 minutes

◦40 minutes to Gifu University by taxi

Access from Central Japan International Airport (Centrair)

◦From Centrair to Meitetsu Gifu Station (via Meitetsu Airport Express/μ-Sky): 57 minutes



Bus Stops

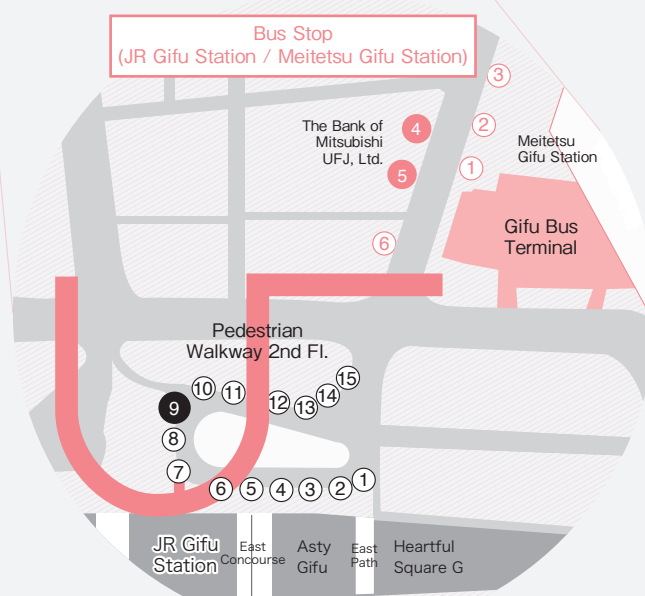
Bus Stops at JR Gifu Eki Kitaguchi (Gifu Station North Exit)

Bus Stop	Line	Route Number	Destination	Time Required
JR Gifu - 9	Gifu University/ University Hospital	C70	Gifu University Hospital	30 minutes
JR Gifu - 9	Gifu University/ University Hospital	C71	Gifu University Hospital	25 minutes (Seiryu Liner)
JR Gifu - 9	Gifu University/ University Hospital	C72	Gifu University Hospital	25 minutes (nonstop)
JR Gifu - 9	Gifu University/ University Hospital	C72	Gifu University	30 minutes (nonstop)
JR Gifu - 9	Ginancho (via Nagara Bridge)	N45	Gifu University Hospital	35 minutes

Bus Stops at Meitetsu Gifu Station

Bus Stop	Line	Route Number	Destination	Time Required
Meitetsu Gifu - 5	Gifu University/ University Hospital	C70	Gifu University Hospital	30 minutes
Bus Terminal - E	Gifu University/ University Hospital	C72	Gifu University Hospital	25 minutes (nonstop)
Bus Terminal - E	Gifu University/ University Hospital	C72	Gifu University	30 minutes (nonstop)
Meitetsu Gifu - 4	Ginancho (via Nagara Bridge)	N45	Gifu University Hospital	35 minutes

- All buses stop at Gifu University. Buses running via Chusetsu Bridge for Bus Route C.
- No nonstop bus service during school holidays and weekends.
- Seiryu Liner is an articulated bus which has only three stops to Gifu University (capacity: 130 passengers).





Gifu University

1-1 Yanagido, Gifu City, Gifu 501-1193, JAPAN
Phone: +81-(0)58-293-2009 Fax: +81-(0)58-293-2021
e-mail: kohositu@gifu-u.ac.jp
URL <https://www.gifu-u.ac.jp/en/>

International General Affairs Office
International Engagement Division
Student Affairs Department
Phone: +81-(0)58-293-3351 Fax: +81-(0)58-293-2143

Inbound and Outbound Student Affairs Office
Phone: +81-(0)58-293-2142 Fax: +81-(0)58-293-2143