

GIFU
UNIVERSITY



GIFU UNIVERSITY 2015

Table of Contents

President's Message	01	International Relations	
Ideals and Aims	02	Statistical Data on International Students	33
Charter	03	International Academic Exchange	35
Three Policies for Education	04	Researchers Accepted/Sent	36
Environmental Initiatives	05	International House	36
Academic Organization	06	Overseas Office	36
Education "Learn" as a keyword		Organization	
Organization for Promotion of Higher Education and Student Support	14	Administrative Organization	37
Educational Reform Initiatives	16	Board Members	38
Number of Students	16	Number of Teaching and General Staff	40
Applicants and Admissions	19	Budget	41
Number of Graduates (Undergraduate)/Career Paths	20	Endowment	41
Medical Licensing Examination Pass Rate/Teacher Employment Rate	21	History	42
Number of Graduates (Graduate School)/Career Paths	22	Presidents Past and Present	43
Student Support Facility	24	Campus	
Student Club Activity	25	Campus Map	44
Research "Explore" as a keyword		Area of Campus and Affiliated Facility	46
Organization for Research and Community Development	26	Location/Access	48
Research Initiatives	27	For Society "Contribute" as a keyword	
Grants-in-Aid for Scientific Research	29	University-Community Collaboration	31
Joint Research/Commissioned Research	30	Extension Course/Symposium/Forum	32
Number of Inventions for Patent	30	City College Program	32
		Senior High School-University Collaboration	32

Academic Year 2015 starts on April 1, 2015 and ends on March 31, 2016

President's Message

The year 2015 is the final year of our Second Six-year Mid-Term Business Period. We have concentrated all efforts in this Period to enhance the presence of Gifu University as highly ranked national university in the central Japan, by producing graduates with established excellence to learn, explore and contribute to any community. We also have initiated the Plan-Do-Check-Action (PDCA) cycle for the next (Third) Mid-Term Period, which begins in 2016. In the Third Period, Gifu University is to play two pivotal roles: center for revitalization of Tokai district, and international as well as domestic hub of life science, environmental science, next-generation manufacturing, and the development of medical education.

With the move of the School of Medicine and University Hospital in 2004, all faculties gathered on a single campus at the present site. The research facilities and related buildings for the fifth and sixth-grade students of Gifu Pharmaceutical University were also built on the same campus. In addition, the Gifu Disaster Mitigation Center was established in April 2015 in collaboration with Gifu Prefecture. In 2016, the relocation of the Gifu Prefecture Central Livestock Hygiene Service Center is scheduled as well. Thus, the role of Gifu University as a comprehensive center of higher education in Gifu Prefecture is going to be further strengthened. For an overview of the facilities located on our campus, please refer to the campus map on pages 44 and 45.

Many big universities once preferred wide suburban campuses, but are now moving their students and faculty back again into downtown areas. In October 2012, Gifu University set up a Satellite Campus as a new educational section on the fourth floor of the East Tower at Skywing 37, a 37-story building adjacent to JR Gifu Station. The Satellite Campus is fully equipped with IT infrastructure and, furthermore, these facilities provide open use to the 22 members of the Gifu Network University Consortium consisting of regional universities, junior colleges, and technical junior colleges. For example, there are joint classes with transferable credits among the Consortium. Additionally, if the purpose of use agrees with the mission of the Satellite Campus, we make the facilities available for area residents or corporate events. In fact, such activities are held quite often on weekends.

Here, I would like to turn to the issue of the future direction of Gifu University. Thanks to the devoted efforts for student development by all faculty members and administrative staffs, the University has produced a considerable number of highly skilled professionals. Recently, Gifu University was selected for the "Center of Community" Program (COC Program) by the Ministry of Education, Culture, Sports, Science and Technology. We also have seen major successes that together comprise a nationwide model extending from regional to international activities. Included are the formation of a consortium of 10 South and Southeast Asian universities (the International Consortium of Universities in South and Southeast Asian Region for the Doctoral Education on the Agricultural Science and Biotechnology), the establishment of a Global Engineering Network of 44 universities, the program for developing human resources in the molding industry, and the project for creating emergency medical networks. It will be our future responsibility to raise further the presence of Gifu University in Japan as well



as in the world, and to ensure the highest performance and quality that exceeds the expectations of students, parents and of course, general people.

Although we are very proud of such successes, we must yet bear in mind the importance of ever asking whether our educational and research programs fulfill the needs of our community. In this context, we should confirm that the word "community" spans from our city and prefecture all the way to the global community. It is thus critical that the University extends its global reach, and our goal is to increase the mutual flow of people and ideas. In practice, we plan to double the number of international students to 500 in the year 2021, and also to promote Japanese students to go out into the world. These students will understand local needs, and will learn and conduct research at the University so that they might resolve the issues they encounter, and make real contributions through those solutions. It is essential that Gifu University expands its regional community-based globalization i.e. glocalization efforts and gives back the fruits of those efforts to the community. We declare that the University must provide "glocal" services, and I believe that here lies the core of the COC Program.

One of the president's roles in University governance is to develop a think tank-like function towards the goals as mentioned above, by leading every effort and by promoting novel ideas. I can foresee how the glocalization of the University is on the path to accomplishing those goals, and I believe that it shall be materialized only if we keep a sufficiently broad perspective. I look forward to working with everyone in the community as we move forward together.

MORIWAKI, Hisataka
President, Gifu University

Ideals and Aims

Learning, Exploring, and Contributing

Ideals

Under the motto of "Learning, Exploring, and Contributing," Gifu University is a national university that is firmly rooted in the local community. This is the land where the cultures of East and West Japan have come together to produce and share diverse cultural and technological assets. These traditions have been passed down to the University, and today, Gifu University continues to be a place for the gathering and exchange of people and knowledge, for the integration of systematic and advanced knowledge, and for scholarly and humanitarian development. The University gives back the fruits of these activities to society and sends forth talented graduates into the community. We take pride in thus contributing to advances in culture and academia and to the development of a safe and bountiful society.

Aims

1. Our first priority is the cultivation of human resources. To this end, we conduct education replete in both quality and quantity and strive to equip students with a rich education, solid and sophisticated expertise, a broad outlook, comprehensive powers of discernment, and excellent communication skills. We strive to train independent and internationally minded professionals ready to contribute to society in a variety of fields.
2. Gifu University strives to maintain high standards of research to serve as the foundation of a quality education. We also aspire to be a hub for advanced, original research in fields such as life sciences and environmental science, and to return the fruits of that research to society.
3. Gifu University draws on diverse academic and research capabilities to tackle regional issues and help stimulate local society. We believe in having a strong presence in the community.
4. Gifu University strives to fully utilize its strengths in education and research to promote the internationalization of the University, to cultivate in its students and faculty member's ability to perform in global settings, and to stimulate local society.

University Emblem



Designed by Mr. Hanichi Sakai, Former Professor of Gifu University

- Gifu University's emblem signifies a boat traditionally used for cormorant fishing and the fire kindled on it to attract fish. The fire represents learning, while the boat represents human happiness.
- The light and dark splashes signify heaven, Earth, and the natural world. They represent all existence and activity, harmony and balance.
- The combination of black and orange signifies passion. It also represents rich and dignified sensibilities.
- The simplified shape signifies the cleanliness and dynamic character of contemporary life. It also represents the speed and intellectual tenor of our times.

University Symbol



Designed by Mr. Hiromi Miyagawa

In 2009, to mark the 60th anniversary of the University's founding, the University solicited design proposals nationwide and chose this symbol from among the proposals. The design embodies our hope that the rich educational and research activities being carried out in Gifu will be known throughout Japan and to the world, and that the students of Gifu University will advance on a sure path—like an arrow—toward their respective futures. The emblem incorporates a powerful bow, forming the letter G for "Gifu."

Charter

Charter of Student: What Gifu University expects of its students

The few years that you spend at Gifu University will surely be some of the most brilliant years of your life, and therefore arguably the most important. Your student life at Gifu University will play a decisive role in your future, however you choose to live it. As you build a foundation for scholarly pursuits and acquire advanced and specialized knowledge, we ask that you also strive to develop your capacity for perception and sensitivity towards humanity, nature, and society. The University faculty will do its utmost to meet your expectations, and we ask that you, in turn, put forth your greatest efforts.

1. Read books, and strive to build a solid foundation for learning.
2. Develop an appreciation for the arts, and aspire to deepen your understanding of humanity and nature.
3. Endeavor to acquire the advanced and specialized knowledge needed to be a professional.
4. Assemble your thoughts into clear and logical pieces of writing, so that you can present your ideas effectively.
5. Enhance proficiency in English, and develop the skills needed for mutual understanding in today's global environment.
6. Use modern technology prudently, and develop your ability to locate and discern factual information and convey information accurately to others.
7. Form healthy living habits, and develop physical stamina and vigor for a long and healthy life.

Charter of Faculty: What Gifu University asks of its faculty

Gifu University makes efforts to embody the ideals of research and education. In accordance with the Charter of Student, the greatest mission with which the University is charged is the cultivation of outstanding talent that will meet the needs of society. We believe that supporting first-rate research and a passion for learning are essential components of high-quality education. To this end, the faculty, as both researchers and educators, must remain conscious at all times of the University's high standard of ethics, while pursuing original research on par with the world's best.

1. As faculty members of a center of education and research, teach in a manner that supports the Charter of Student.
2. Cultivate competent adults who possess a depth and breadth of views and the comprehensive skills needed for sound evaluation and judgment.
3. Realize that students' education extends beyond the classroom and includes active involvement in research, daily living habits, and all that constitute these activities.
4. As both researchers and educators, let your actions reflect a constant awareness of ethics.
5. Hold lofty goals, and aim to conduct research on par with the world's best.
6. Pursue original research with a broad perspective and view for the long-term.
7. Seek to contribute to society in your field of study.

Charter of Philanthropy: How Gifu University responds to the expectations and needs of society

The image invoked by the word 'university' has traditionally been one of a lofty presence far removed from society, a so-called 'ivory tower.' However, since the move to incorporate national universities in Japan, they have become corporate entities upon which today's society places vast expectations. Universities have responded to these expectations by actively serving and giving back to society. As a regional university situated in the center of Japan, Gifu University is expected to respond to the broad expectations and demands of the regional community in areas of education, research, industry, medicine, culture and others, and contribute to the international community as well.

1. Cultivate excellent human resources, as this is the greatest social contribution expected of the University.
2. Cooperate and collaborate with the regional community, as this is one of the most important obligations of a regional university.
3. Help breathe new life into regional industry through cooperation with industry and government.
4. Contribute to the progress of regional education, culture, economy, and public administration through cooperation with the region's citizens and administrative authorities.
5. The University Hospital is also expected to carry out its roles as a center of advanced medical treatment and of development of local medical care.
6. Work with developing and developed nations for the resolution of international and social issues.
7. Contribute to the international community through student exchange programs and other collaborations with overseas educational institutions.

Charter of Administration: What Gifu University requires of its administration

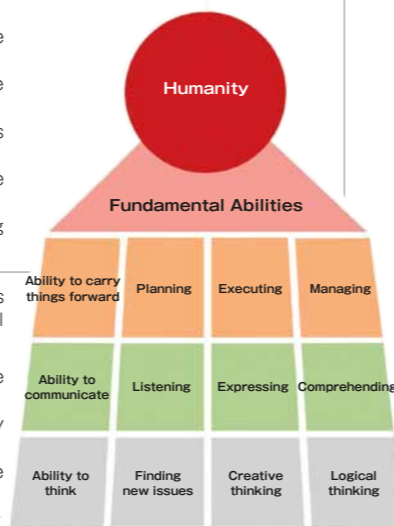
Society has high expectations for the University regarding education, research, and social contributions. In this regard, it is imperative that the University responds to these expectations by setting and achieving the Mid-Term Objectives, and making and implementing the Mid-Term Plan. The University aims to advance its original goals and to see that the University itself progresses as an organization with a unique structure and system of values. To do so, it is crucial that the staff and faculty share a common awareness of the issues concerned and engage in the administrative affairs of the University under the leadership of the President of the University. Given that necessity, it is essential that we focus on strategy and work to build a distinctive university. Given the unforgiving economic conditions that all national universities face, administration and management require the element of strategy in their operations if they hope to maintain the activities of the University and advance the education, research, and social contributions that are its essential responsibilities.

1. Achieve the Mid-Term Objectives and execute the Mid-Term Plan.
2. Emphasize the importance of strategizing, and carry out administration with clear objectives under the leadership of the University President.
3. Conduct operations with a high priority placed on environmental issues. Concerns for these issues should be reflected in the University education, research, and social contributions.
4. Operate under a clear management strategy in order to overcome harsh economic conditions.
5. Be diligent in the acquisition of external funding and strengthen the University's economic base.
6. Emphasize transparency and the public accessibility of information, and conduct management in a manner that is both efficient and logical.
7. Hire first-rate people for the faculty and cultivate their talents.

Three Policies for Education

Three Policies for Education (Undergraduate Program)

<p>Diploma Policy</p>	<p>Under the motto of "Learning, Exploring, and Contributing," Gifu University is a national university that is firmly rooted in the local community. Gifu University is located in central Japan, the place where the cultures of East and West Japan have come together to produce and share diverse cultural and technological assets. The mission of Gifu University is to cultivate human resources that can make advancements in academia and culture and further the development of a sound and healthy community. The University awards bachelor's degrees to those who comprehensively possess the following fundamental abilities and specialized skills in their respective fields of expertise.</p> <p>Fundamental abilities that cultivate humanity: - Ability to think (comprehensive judgment) - Ability to communicate (communication skills) - Ability to carry things forward (action-taking skills)</p> <p>A high degree of specialization required of professionals: - Sophisticated expertise and skills that are required to further the development of society - Ways of thinking and viewpoints based on extensive knowledge and insight - A sense of social responsibility based on a broad liberal arts education and a high standard of ethics</p>
<p>Curriculum Policy</p>	<p>Gifu University organizes and implements its education curriculum based on the following curriculum policy so that it may produce professionals equipped with fundamental abilities as well as specialized skills:</p> <ul style="list-style-type: none"> - Develop fundamental abilities that cultivate humanity - Accurately evaluate the learning outcomes of students, and cultivate a sense of responsibility among students towards learning on their own - Cultivate ethical standards that enable students to act in a socially responsible manner - Build the foundations for lifelong learning through liberal arts education courses in the humanities, social science, natural sciences, and health sciences - Organize a structured education curriculum with clear objectives to be achieved, and cultivate knowledge and skills required of professionals - Train students to have professional viewpoints and ways of thinking reflecting their respective fields of expertise
<p>Admission Policy</p>	<p>Gifu University accepts students who possess the following abilities, as they allow students to achieve the academic philosophy and educational objectives of Gifu University:</p> <ul style="list-style-type: none"> - Those who have basic academic knowledge and the skills required to complete the University courses - Those who have intellectual curiosity and are self-motivated to learn and study - Those who have multi-faceted and logical thinking skills - Those who, based on their own experiences, are motivated to actively inquire about the issues before them



Three Policies for Education (Graduate Program)

<p>Diploma Policy</p>	<p>Under the motto of "Learning, Exploring, and Contributing," Gifu University Graduate School is a national university that is firmly rooted in the local community. Gifu University Graduate School is located in central Japan, the place where the cultures of East and West Japan have come together to produce and share diverse cultural and technological assets. The mission of Gifu University Graduate School is to produce highly-skilled professionals that can make advancements in academia and culture and further the development of a sound and healthy community. The graduate school awards degrees to those who comprehensively possess the following fundamental abilities and specialized skills in their respective fields of expertise.</p> <p>Fundamental abilities as highly-skilled professionals: - Ability to think (comprehensive judgment) - Ability to communicate (communication skills) - Ability to carry things forward (action-taking skills)</p> <p>Advanced specialized knowledge and technical skills: - More sophisticated expertise and skills that are required to further the development of society - Ways of thinking and viewpoints based on more extensive knowledge and insight - A sense of social responsibility based on a broader liberal arts education and a higher standard of ethics</p>
<p>Curriculum Policy</p>	<p>Gifu University Graduate School organizes and implements its education curriculum based on the following curriculum policy in order to produce highly-skilled professionals with fundamental abilities and specialized skills:</p> <ul style="list-style-type: none"> - Cultivate sophisticated expertise and skills that are required to further the development of society - Develop ways of thinking and viewpoints based on extensive knowledge and insight - Cultivate a sense of social responsibility based on a broad liberal arts education and a high standard of ethics
<p>Admission Policy</p>	<p>Gifu University Graduate School accepts students who possess the following abilities, as they allow students to achieve the academic philosophy and educational objectives of Gifu University Graduate School:</p> <ul style="list-style-type: none"> - Those who have basic academic knowledge and the skills required for coursework and research in the Graduate School - Those who can contemplate things comprehensively and logically - Those who have intellectual curiosity and are self-motivated to conduct research - Those who have a broad range of knowledge and high standard of ethics, and who acknowledge social responsibility in their research

Environmental Initiatives

On November 27, 2009, Gifu University declared itself an "environmental university," indicating that it would contribute to the regional community by pursuing ongoing, unique programs of environmental initiatives based on the Gifu University Environmental Policy.

Gifu University Environmental Policy

The ideals of Gifu University are based on making advances in culture and academia and furthering the development of a safe and bountiful society. Gifu is the place where the cultures of East and West Japan have come together to produce and share diverse cultural and technological assets. These traditions have been inherited by the University, and today, Gifu University continues to be a place for the gathering and exchange of people and knowledge, for the integration of systematic and advanced knowledge, and for scholarly and humanitarian development. The University gives back the fruits of these activities to society and sends forth talented graduates into the community. To achieve these ideals, Gifu University will endeavor both to foster exceptional students who are capable of taking responsibility for the future of the environment and to create a university environment in a way that befits Gifu, an area that is blessed with, and known for its great natural beauty called Hizan Nosui (mountain rich north, clean water south).

Basic Policies

1. Pursue environmental education and research in a way that takes advantage of the University's unique characteristics.
2. Contribute to the regional community by utilizing the University's educational and research capabilities.
3. Be aware of the environmental aspect of educational and research activities at all times, evaluate the environmental impact of the University's activities, and strive to prevent environmental pollution.
4. Work to significantly lower the environmental impact of the University's activities by saving energy and resources.
5. Thoroughly comply with environmental laws and regulations applicable to education and research as well as with other provisions and requirements to which the University has acceded.
6. Establish and work to continuously improve a framework for reviewing the University's environmental management system.
7. Establish and work to achieve activity targets and objectives for each academic year.

Gifu University publicizes this Environmental Policy both on and off campus.

Gifu University has earned university-wide ISO 14001 certification (excluding the University Hospital)

After the Faculty of Regional Studies earned certification under ISO 14001, a global environmental management system standard, in 2003, the scope of certification was successively expanded, and the entire university had earned it by 2013, with the exception of the University Hospital.



Gifu University Environment Month (every November)

Gifu University has designated November as Environment Month, a time during which a variety of environment-related events are carried out, based on the date of its Environmental University declaration (November 27, 2009).



Campus cleanup by students and faculty members



Environmental University Forum

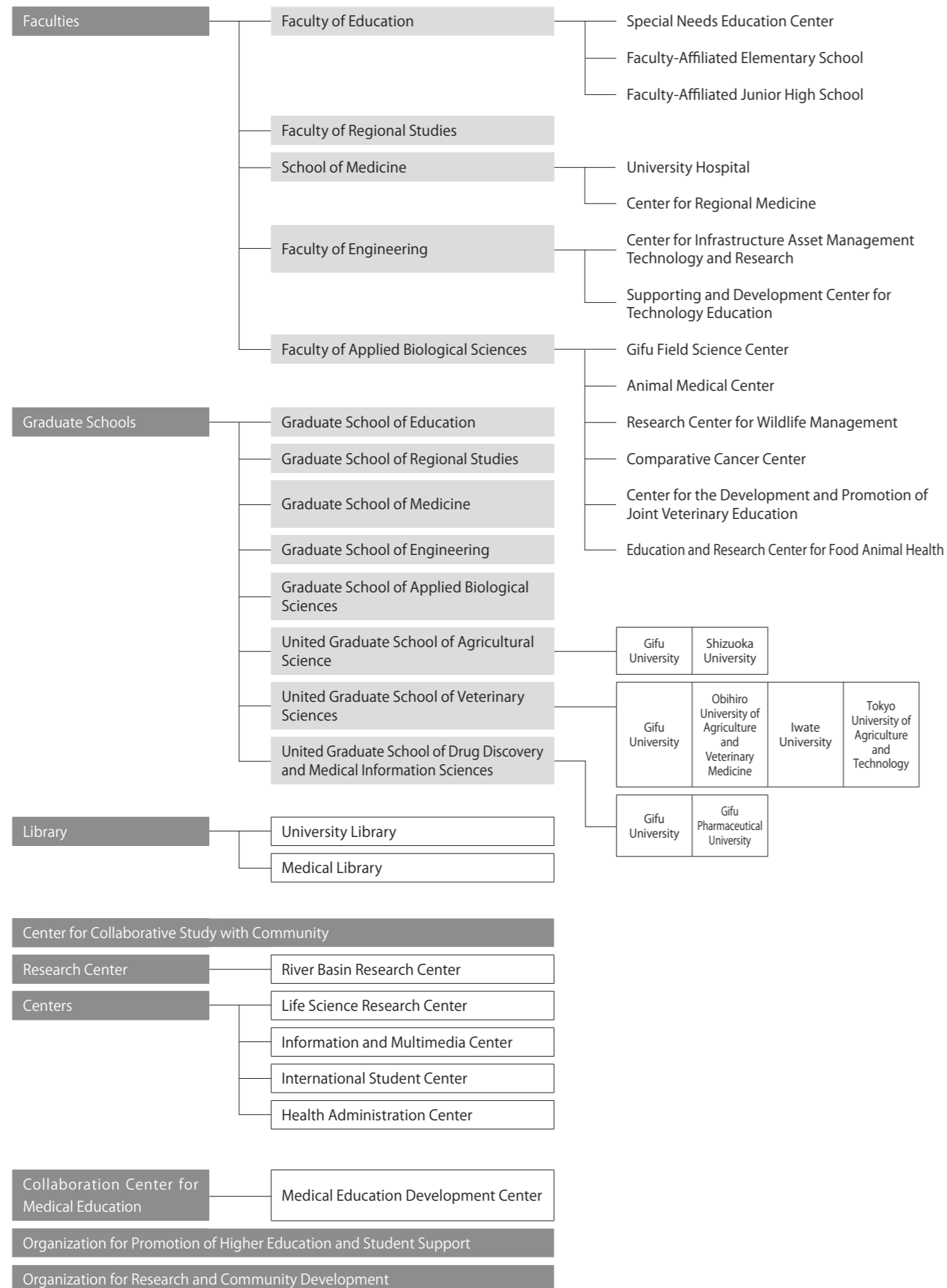


ISO14001 internal audit by students



Greening of a flowerbed by the students in front of the Library

Academic Organization



Faculty / School

Education (2 Training Courses, 12 Courses)	Training Course for School Teachers	Courses	National Language Education, Social Studies Education, Mathematics Education, Science Education, Music Education, Art Education, Health and Physical Education, Technology Education, Home Economics Education, English Education, School Education, Special Needs Education
	Training Course for Teachers at Special Needs School		
		Affiliated Institutions	Special Needs Education Center Faculty-Affiliated Elementary School Faculty-Affiliated Junior High School

Regional Studies (2 Departments, 4 Domains)	Department of Policy Studies	Domains	Regional Policy, Environmental Studies
	Department of Cultural Studies		
			Cultural Studies, Regional Structure

School of Medicine (2 Courses)	Medical Course	Tutorial Courses	Human Body, Neuroanatomy and Neuroscience, Molecular Biology, Physiology, Microbiology, Pharmacology and Toxicology, Pathology, Community and Occupational Health, Cardiology/Respirology/Nephrology and Urology, Gastroenterology/Laboratory Medicine/Hematology, Endocrine and Metabolic System, Neuroscience and Behavioral Science, Child Health, Reproduction and Gynecology, Bioethics and Legal Medicine, Clinical Genetics and Ethics, Dermatology, Clinical Immunology, Eye, Ear, Nose and Throat, Musculoskeletal Science, Anesthesiology and Emergency Medicine, Diagnostic Imaging and Radiation Oncology
	Nursing Course	Courses	Basic Health Science and Fundamental Nursing, Maternal and Child Health Nursing, Adult and Gerontological Nursing, Community and Mental Health Nursing
		Affiliated Institutions	University Hospital Center for Regional Medicine

Engineering (4 Departments, 9 Courses)	Department of Civil Engineering	Courses	Environmental Studies, Disaster Reduction Studies
	Department of Mechanical Engineering		Mechanical Engineering, Intelligent Mechanical Engineering
	Department of Chemistry and Biomolecular Science		Materials Chemistry, Biomolecular Science
	Department of Electrical, Electronic and Computer Engineering	Electrical and Electronic, Informatics, Applied Physics	
		Affiliated Centers	Center for Infrastructure Asset Management Technology and Research Supporting and Development Center for Technology Education

Applied Biological Sciences (2 Courses, 1 Department)	Course of Applied Life Science	Sub-Courses	Molecular Life Science, Life Science for Food
	Course of Agricultural and Environmental Science		Plant Production, Animal Science, Environmental Science and Ecology
	Joint Department of Veterinary Medicine		
		Affiliated Centers	Gifu Field Science Center Animal Medical Center Research Center for Wildlife Management <Endowed Research Division: Wild Animals Damage Prevention Division (Gifu Prefecture)> Comparative Cancer Center Center for the Development and Promotion of Joint Veterinary Education Education and Research Center for Food Animal Health



Faculty of Education



Faculty of Regional Studies



School of Medicine / University Hospital



Faculty of Engineering / Faculty of Applied Biological Sciences

Graduate School

Education	Professional Degree Program	Teacher Education Course	Courses	School Improvement, Lesson and Curriculum Development, Clinical Education, Special Needs Education			
	Master's Program	Supporting Psychological Development Course Major in Subject-Integrated Education	Courses	Clinical Psychology, School Psychology, Special Needs Education			
Regional Studies	Master's Program	Policy Studies Cultural Studies	Areas	Socioeconomics, Public Administration and Policy, Environmental Studies Society, Culture			
	Doctoral Program	Medical Sciences	Divisions	Molecule and Structure	Courses	Cell Signaling, Physiology and Biophysics, Pharmacology, Parasitology and Infection, Gene and Development, Diabetes and Endocrinology, Pediatrics, Informative Clinical Medicine	
			Disease Control	Anatomy, Molecular Pathobiology, Cardiology, Respiratory, General and Cardiothoracic Surgery, Orthopaedic Surgery, Dermatology, Urology, Anesthesiology and Pain Medicine, Oral and Maxillofacial Sciences			
			Neuroscience	Morphological Neuroscience, Physiology, Sports Medicine and Sports Science, Neurology and Geriatrics, Psychopathology, Neurosurgery, Otolaryngology, Ophthalmology and Visual Sciences, Clinical Brain Sciences			
			Tumor Control	Tumor Pathology, Pathology and Translational Research, Surgical Oncology, Gastroenterology, Hematology, Obstetrics and Gynecology, Radiology, Epidemiology and Preventive Medicine, Clinical Oncology			
Medicine	Master's and Doctoral Program	Regeneration and Advanced Medical Sciences	Divisions	Medical Management	Courses	Tissue and Organ Development, Neurobiology, Microbiology	
				Molecular Regeneration, Regeneration Technology, Applied Regeneration		Molecular Design and Synthesis, Intelligent Image Information	
	Master's Program	Nursing Science	Divisions	Nursing Education	Courses	Cardiovascular and Respiratory Regulation, Biomedical Ethics and Social Medicine	
				Continuing Education in Nursing		Maternal and Child Health Nursing	Specialty Areas
				Maternal and Child Health Nursing		Acute Care Nursing, Chronic Care Nursing	
				Nursing Practice	Community Health Care Nursing	Community Health Nursing, Mental Health Nursing, Gerontological Nursing	
			Department of Integral Medicine	Breast and Molecular Oncology (Chugai Pharmaceutical Co., Ltd.), Cardiovascular and Respiratory Advanced Medicine (Gifu Welfare Federation of Agricultural Cooperatives), Frontier Science for Surgical Oncology (Yakult Honsha Co., Ltd.), Division for Regional Cancer Control (Gifu Welfare Federation of Agricultural Cooperatives), Regional Medicine and Musculoskeletal Science (Sekigahara Town), Multidisciplinary Therapy for Hepato-Biliary-Pancreatic Cancer (Gifu Welfare Federation of Agricultural Cooperatives), Advanced Joint Reconstructive Surgery (KYOCERA Medical Corporation, Biomet Japan, Inc.), Disability Medicine (Gifu Prefecture), Chronic Kidney Disease (Gifu Prefecture)			
Engineering	Master's Program	Civil Engineering	Courses	Geo-environmental Management, Structural Design, Environmental and Maintenance, Engineering Urban Design			
		Mechanical and Systems Engineering		Mechanics for Mechanical Design, Manufacturing System Engineering, Fluid System Engineering, Thermal Engineering			
		Applied Chemistry		Molecular Design, Molecular Transformation, Molecular Function			
		Electrical and Electronic Engineering		Solid State Electronics, Electrical Energy Engineering, Information System Engineering			
		Biomolecular Science		Bioorganic and Biophysical, Molecular Biochemistry, Molecular Biology, Bioinformatics			
	Information Science	Foundation of Computer Science, Information Environment, Knowledge Engineering, Human Media Technology					
	Materials Science and Technology	Materials Synthesis, Materials Characterization, Materials Processing					
	Human and Information Systems	Human Support System Engineering, Intelligent Control Systems Engineering, Mechanical and Informatic Engineering, Energy Control System Engineering					
	Mathematical and Design Engineering	Computational Mathematics, Materials Design, System Design					
	Environmental and Renewable Energy Systems	Environmental Systems, Renewable Energy Systems, Fundamental Science on Environment, Global Environment and Energy, New Functional Materials for Renewable Energy					
Doctoral Program		Mechanical and Civil Engineering	Courses	Civil Engineering, Mechanical Engineering			
		Material Engineering		Applied Materials Chemistry, Applied Molecular Chemistry			
		Electronics and Information Systems Engineering	Courses	Electronic Materials Engineering, Knowledge and Information Engineering			
		Environmental and Renewable Energy Systems		Environmental Systems, Renewable Energy Systems, Fundamental Science on Environment, New Functional Materials for Renewable Energy			
Applied Biological Sciences	Master's Program	Applied Life Science	Courses	Molecular Life Science, Life Science for Food			
		Agricultural and Environmental Science		Plant Production, Animal Science, Field Ecology, Ecological and Environmental Management			
United Graduate School of Agricultural Science	Doctoral Program	Science of Biological Production	Major Chairs	Plant Production & Management, Animal Resource Production			
		Science of Biological Environment		Agricultural & Environmental Engineering, Management of Biological Environment			
		Science of Biological Resources		Utilization of Biological Resources, Smart Material Science, Regulation of Biological Functions			
United Graduate School of Veterinary Sciences	Doctoral Program	Veterinary Sciences	Major Tracks	Basic Veterinary Science, Pathogenetic Veterinary Science, Applied Veterinary Science, Clinical Veterinary Science			
United Graduate School of Drug Discovery and Medical Information Sciences	Doctoral Program	Medicinal Sciences	Fields	Biological Molecular Sciences, System Biological Technologies			
		Medical Information Sciences		Biomedical Informatics, Biofunctional Control			

Library

As of April 1, 2015

Library Collections						
Classification	Books (volumes)			Periodicals (titles)		
	Japanese	Foreign	Total	Japanese	Foreign	Total
University Library	523,800	217,428	741,228	9,657	3,939	13,596
Medical Library	78,178	85,639	163,817	1,457	1,790	3,247



Reception Counter & Entrance Gate

About 7,200 titles of electronic-journals (Elsevier, Springer, etc.), about 7,300 titles of electronic books such as NetLibrary, and database (Web of Science, SciFinderScholar, etc.) are available.

Opening Hours / Closing Days

Classification	Monday - Friday	Saturday	Sunday, National Holiday (examination periods only)	Closed			
				Sundays, National Holidays *1	Summer Holidays (Aug. 12 to 14) Winter Holidays (Dec. 28 to Jan. 4)	Inventory Days (2 nd Tuesday of each month) *2	Some Saturdays during vacation periods
University Library	9 : 00 ~ 21 : 30	10 : 00 ~ 18 : 00	10 : 00 ~ 18 : 00	Sundays, National Holidays *1	Summer Holidays (Aug. 12 to 14) Winter Holidays (Dec. 28 to Jan. 4)	Inventory Days (2 nd Tuesday of each month) *2	Some Saturdays during vacation periods
Medical Library	8 : 30 ~ 20 : 00	10 : 00 ~ 18 : 00		Sundays, National Holidays	Summer Holidays (Aug. 12 to 14) Winter Holidays (Dec. 28 to Jan. 4)	Inventory Days (2 nd Tuesday of each month)	

Note: The closing times during vacation periods and March are subject to change. *1: Examination periods excepted. *2: July, October, January, and February excepted.

Utilization (2014)

Number of Users	Classification		Staff	Students	Visitors	Total
	University Library	Book Collection Area and Others				
	University Library	Book Collection Area and Others	5,494	138,585	4,040	179,737
		Learning Commons*				
				31,618		
	Medical Library		6,066	37,362	3,260	46,688
						226,425
Number of Circulation	University Library		3,926	34,733	686	39,345
	Medical Library		1,556	8,892	59	10,507
			5,482	43,625	745	49,852
Photo Copying Service	University Library		4,353		1,123	5,476
	Medical Library		3,269		1,669	4,938
			7,622		2,792	10,414

Note: University Library opens 273 days and Medical Library opens 281 days.

* : Learning Commons is where newspapers and a broadcast from the BBC are available, it can also be used for a group study.



University Library

Library Special Collections

Collections	Descriptions
Seikado Art Museum's Collection	The collection is composed of 472 volumes of manuscripts, printed books related to Japanese Language, Kokugogaku in the era of Meiji period, and 769 microfilm collections.
Seikado Art Museum's Collection	This contains 1,333 rare collections of old Japanese poems and 3,192 microfilm collections.
Daitokyu Commemorative Library Collection	This collection contains 878 volumes of Edo-period Japanese literature, and 1,530 original microfilm collections.
Daitokyu Commemorative Library Collection	This contains 95 collections of old stories, narrative literature, and historical tales, and 695 microfilm collections.
Collection of Books and Magazines for Research into Environmental Problems	The collection of world academic literature is composed of 19 periodicals, 26 book series, and 200 books.
Complete Collection of Reprinted Newspapers and Periodicals on Education in the Meiji, Taisho, and Showa Periods	This is a collection of reprinted newspapers and periodicals in the field of education.
Landolt-Börnstein: Numerical Data and Functional Relationships in Science and Technology Group I. Elementary Particles, Nuclei and Atoms	This collection focuses on the numerical data on elementary particles, nuclei and atoms.
Collection of Webster's English Dictionaries	The collection of Webster's English Dictionaries ranges from the first edition of 1806 to 100 different editions published by 1943, totaling 108 volumes of English dictionaries.
Special Collection of Rare Books	This collection is composed of about 1,500 Japanese and Chinese books from the Edo and Meiji period. They were collected during the time of Gifu Normal School, Gifu Agricultural and Forestry College, and Gifu Prefectural Medical College, which are the precursors of Gifu University.



Browsing Section



Two illustrated rare books of "Koshikibu"

University Hospital

The University Hospital provides highly advanced medical care as the sole university hospital and special function hospital in Gifu Prefecture. It has also been designated as a specialized hospital for diseases that are difficult to treat, such as cancer, hepatitis, AIDS, etc. The University Hospital places particular emphasis on advanced medical care for five categories of major disease (cancer, cardiac infarction, stroke, diabetes, and psychiatric illness) and five medical services (emergency medical care, disaster medical care, rural and community medical care, perinatal care, and pediatric care) viewed as high priority by the Japanese government. The University Hospital has been designated as one of Japan's advanced emergency medical service centers, and the Advanced Critical Care Center in the Hospital takes critical, high-acuity emergency patients. Since February 2011, the Hospital has provided a helicopter emergency medical service as the base hospital in Gifu Prefecture (451 emergency transport cases for 2014).

The Clinical Genetics Division was established in October 2014, and the Bed Control Center was established in January 2015. The University Hospital strives to improve the quality of its medical care, ensures the safety of its medical care, practices team-based medical treatment, and trains physicians to provide the best medical care possible for each patient.

As of April 1, 2015

Number of Patients (2014)		
Inpatients	Total Number of Patients	172,409
	Average per Day	472.35
	Bed Occupancy Rate	76.9%
	Operation Days	365 days
Outpatients	First Visit Patients	18,198
	Revisit Patients	304,922
	Total	323,120
	Average per Day	1,324.3
	Days for Outpatient treatment	244 days

Clinical Department and Number of Beds	
Classification	Number of Beds
Internal Medicine I	61
Hematology	57
Internal Medicine II	22
Internal Medicine III	12
Neurology & Geriatrics	13
General Internal Medicine	41
Surgery I	48
Surgery II	36
Obstetrics & Gynecology	41
Orthopaedic Surgery	31
Neurosurgery	21
Ophthalmology	31
Oto-Rhino-Laryngology	18
Plastic & Reconstructive Surgery	22
Dermatology	37
Urology	36
Psychiatry	2
Pediatrics	1
Radiology	10
Anesthesiology & Pain Medicine	27
Dentistry, Oral & Maxillofacial Surgery	6
Advanced Critical Care Center	12
Intensive Care Unit	29
Neonatal Intensive Care Unit	614
Common	
Total	



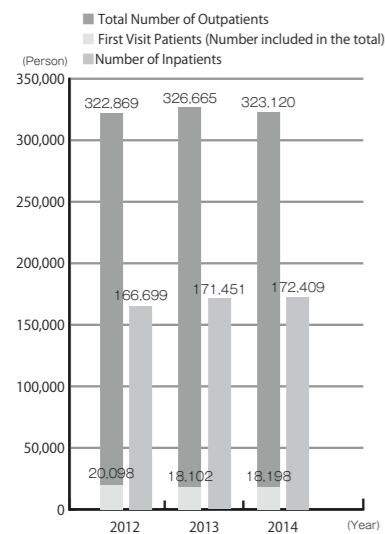
University Hospital

Central Clinical Facilities

Division of Clinical Laboratory	Advanced Critical Care Center	High-level Imaging Diagnosis Center
Operation Division	Center for Medical Cooperation	Neonatal Intensive Care Unit
Radiology Services	Center for Nutrition Support & Infection Control	Autopsy Imaging Center
Supplies Division	Division of Transfusion Medicine & Cell Therapy	Stroke Center
Division of Transfusion Medicine & Cell Therapy	Cancer Center	Clinical Genetics Division
Pathology Division	AIDS Clinical Center	Bed Control Center
General Medicine	Center for Liver Disease	Dietary Management Division
Medical Information Division	Rehabilitation Division	
Endoscopy Center	Birthing Center	
	Medical Instrument Center	

Patient Safety Division
Division of Pharmacy
Division of Nursing
Medical Record Management Division
Center for Clinical Training & Career Development
The Minimally Invasive Surgery Center for Training & Education
Innovative & Clinical Research Promotion Center

Changes in the number of patients



Animal Medical Center

The Animal Medical Center is the only facility dedicated to veterinary education, research, and treatment in the Chubu region. In response to the increasing need for veterinary practices in recent years and to provide advanced medical treatment that pet owners expect, a new clinical ward and Linac Center were built onto the Animal Medical Center in April 2010 as well as the MRI Ward in April 2012. The Center's new clinical ward has private consultation rooms, a positive pressure surgery room which can also be used for brain surgery, and an intensive-care unit. It is an advanced facility equipped with electronic medical charts and diagnostic imaging units. The Linac Center was the first of its kind at a Japanese national university to have a high-energy radiation LINAC (linear accelerator) treatment system, and the MRI Ward was likewise the first to have an MRI (magnetic resonance imaging) system. The Center's specialties are internal medicine, surgery, oncology, and neurology for companion animals, and clinical theriogenology for farm animals. In one year, about 8,000 cases are being treated at the departments of internal medicine, surgery, oncology, and neurology from referrals from private hospitals in the Tokai, Kinki and Hokuriku regions. At the same time, the department of clinical theriogenology plays an important role in the medical care of farm animals in Gifu area, examining about 300 cattle a year.



Animal Medical Center

Facility Overview

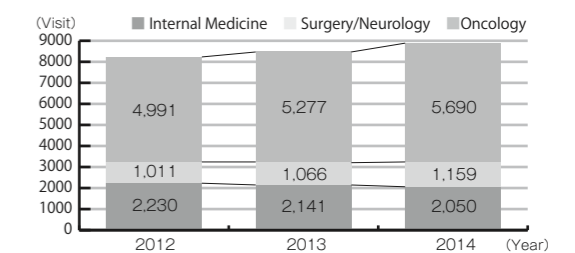
As of April 1, 2015

Name	Floor Space (m ²)	Facility Information
Clinical Ward	911	1 st floor: 7 Consultation Rooms, Ultrasonography Room, Treatment Room, Examination Room 1, Pharmacist, Reception and Office 2 nd floor: Positive Pressure Surgery Room, General Operating Room (3 operating tables), Operation Preparation Room, Intensive-Care Unit, Recovery Room, 2 Nap Rooms
Linac Center, MRI Ward	327.55	Linac Room, MRI Room, Control Room
Main Building (1st floor)	438	Endoscope & Laparoscope Room, Dental Room, X-ray and Image Analysis Room, Examination Room 2, Counseling Room, Director's Room, Consultation Room for Farm Animals
Main Building (2nd floor)	68	Genetic Test Room, Staff Room
CT Ward	47	X-ray CT Imaging Room, Control Room
Inpatient Ward	260	Rooms for Dogs, Rooms for Cats, Animal Blood Donor Rooms for Dogs and Cats, Polyclinic, Meeting Room
Total	2,051.55	

Total number of clinical visits by animal type

Year	Companion Animals				Farm Animals				Total	
	Dogs	Cats	Others	Subtotal	Cattle	Horses	Pigs	Sheep/Goats		
2012	7,165	1,062	1	8,228	358	2	0	4	364	8,592
2013	7,238	1,239	1	8,478	123	3	0	3	129	8,607
2014	7,417	1,476	1	8,894	123	0	0		123	9,017

Changes in the total number of clinical visits to the departments of internal medicine, surgery/neurology, and oncology



Collaboration Center for Medical Education

Medical Education Development Center (MEDC)

The mission of the Medical Education Development Center (MEDC) is to cultivate human resources that can dedicate to medical education and promote collaboration and joint research with medical education institutions in Japan and overseas. The Center was accredited as the only Collaboration Center for Medical Education in Japan by the Ministry of Education, Culture, Sports, Science and Technology in April 2010, and five more years of authorization as the Collaboration Center has been admitted from April, 2015.

The Tutorial Education Division in the Center works to popularize and improve the Problem-Based Learning (PBL) tutorial approach, while the Virtual Skill Division works to develop communication education with simulated patients and simulation-based education. MEDC also focuses on education for medical professionalism, outcome-based medical education, computer-assisted learning, portfolio assessment systems, international exchange, medical English education, and a doctoral degree program for medical education. Seminar and Workshop for Medical Education is held four times a year and is highly regarded as a nationwide teacher-training program.

[Tutorial Education Division, Virtual Skill Division]



Tutorial Education



Medical Communication Practice



Seminar and Workshop for Medical Education



Clinical Skills Education

Centers for Education and Research Activity

Center for Collaborative Study with Community

In order to produce regionally-focused human resources and solve community issues, the Center for Collaborative Study with Community was established as a university-wide organization which aims to promote activities in cooperation with the community and community development. The Gifu University Program, "Creating Local Knowledge Bases in Gifu, the Land of Clear Waters: A Regionally Integrated University," was selected as one of the University Center of Community Programs for 2013 by the Ministry of Education, Culture, Sports, Science and Technology. As part of the plan, the Center for Collaborative Study with Community conducts the Education Program for Future Community Leaders, provides a venue to bring people together, and promotes regionally focused scholarship projects.



Center for Collaborative Study with Community

River Basin Research Center

As the main institution for the study of environmental sciences at Gifu University, the River Basin Research Center strives to realize a safe, secure and sustainable society in the region. In this respect, the Center conducts research into the present natural environment as well as changes that will occur in the future, performs conservation assessments of natural resources, and conducts analyses of the impact of the environment on human life, with a view to developing methods to conserve and manage natural resources and the environment.

[Division of Vegetation Resources and Function, Division of Water System Safety and Security, Division of Information Science on River Basin, Takayama Field Station]



River Basin Research Center

Life Science Research Center

The Life Science Research Center conducts scholarly research in advanced fields related to life sciences. The Center uses pioneering techniques, including genome and proteome analysis, genetic recombination, nanotechnology, radioisotope, and large analytical instruments. The Center also supports research regarding the control of radioisotope, maintenance of large analytical instruments, and the care of laboratory animals.

[Division of Genomics Research, Division of Anaerobe Research, Division of Animal Experiment, Division of Instrumental Analysis, Radioisotope Laboratory]

<Endowed Research Division: Division of Anti-Oxidant Research (TIMA Stiftung)>

Life Science Research Center
(Division of Genomic Research)

Information and Multimedia Center

The Information and Multimedia Center operates and maintains campus information network services, information-related facilities and equipment in the campus. The center is devoted to the overall advancement of information systems involving education, research, and administrative matters at Gifu University through the use of information media, the development of the e-Learning systems and systems for regional collaboration, and the use of on-campus information assets.

[Research Division of Information Management, Research Division of Educational Communications, Research Division of Curriculum Development, Research Division of Lifelong Learning Community, Research Division of Knowledge Archive]



Information and Multimedia Center Building A

International Student Center

The International Student Center offers education in Japanese language and culture to international students, and provides guidance and counseling in their studies and daily life. Japanese students who wish to study abroad also can receive counseling and support from the Center. In addition, the Center plans and manages summer school programs (both accepting and sending students). It promotes internationalization at Gifu University through international exchange by holding, for example, cross-cultural communication courses for both Japanese and international students.

The Exchange Lounge is located in the Center building, and it is a place for communication between Japanese and international students, it is a place for providing learning support for international students by tutors, and for gathering information about studying abroad.



International Student Center

Health Administration Center

Health Administration Center has main roles in the health promotion and development of university students and faculties/staffs based on School Health and Safety Act and Industrial Health and Safety Act.

The center provides annual health checkups and health counseling/support based on the results for all students and faculties/staffs. The center also provides first aid services, health advice/education, health enlightenment activities, and so on. The center implements campus health plans and offers a wide range of services.

The center conducts epidemiological analysis relating students and faculties/staffs health issues, which contributes to development of health policy on not only Gifu University campus but also other universities in Gifu Prefecture.



Health Administration Center

Satellite Campus / Seminar House

Gifu University Satellite Campus (Opened in October 2012) (4th floor of the East Tower at Gifu Skywing 37, 6-31 Yoshinomachi, Gifu City)

The Gifu University Satellite Campus, directly connected to JR Gifu Station, has two multipurpose rooms that can be used for lectures, seminars and lecture presentations, "Learning Commons" where students can study on their own, two meeting rooms for business consulting, and other purposes. The Psychological Counseling Room is available to the public until the end of September, 2015.

The Gifu University Satellite Campus can be used by Gifu University students, faculty and staff members, Gifu University graduates, and local residents. It is a center for the promotion of education and research at Gifu University, student activities, contributions to the community, and the dissemination of information.



Gifu Skywing 37

Gifu University Hayano Residence Seminar House (Opened in April 2013) (1777 Hiruicho, Ogaki City)

The Gifu University Seminar House, which is along Kyu-Nakasendo (a route from the Edo period) in Hiruicho, Ogaki City is the former residence of Dr. Saburo Hayano, the 7th president of Gifu University.

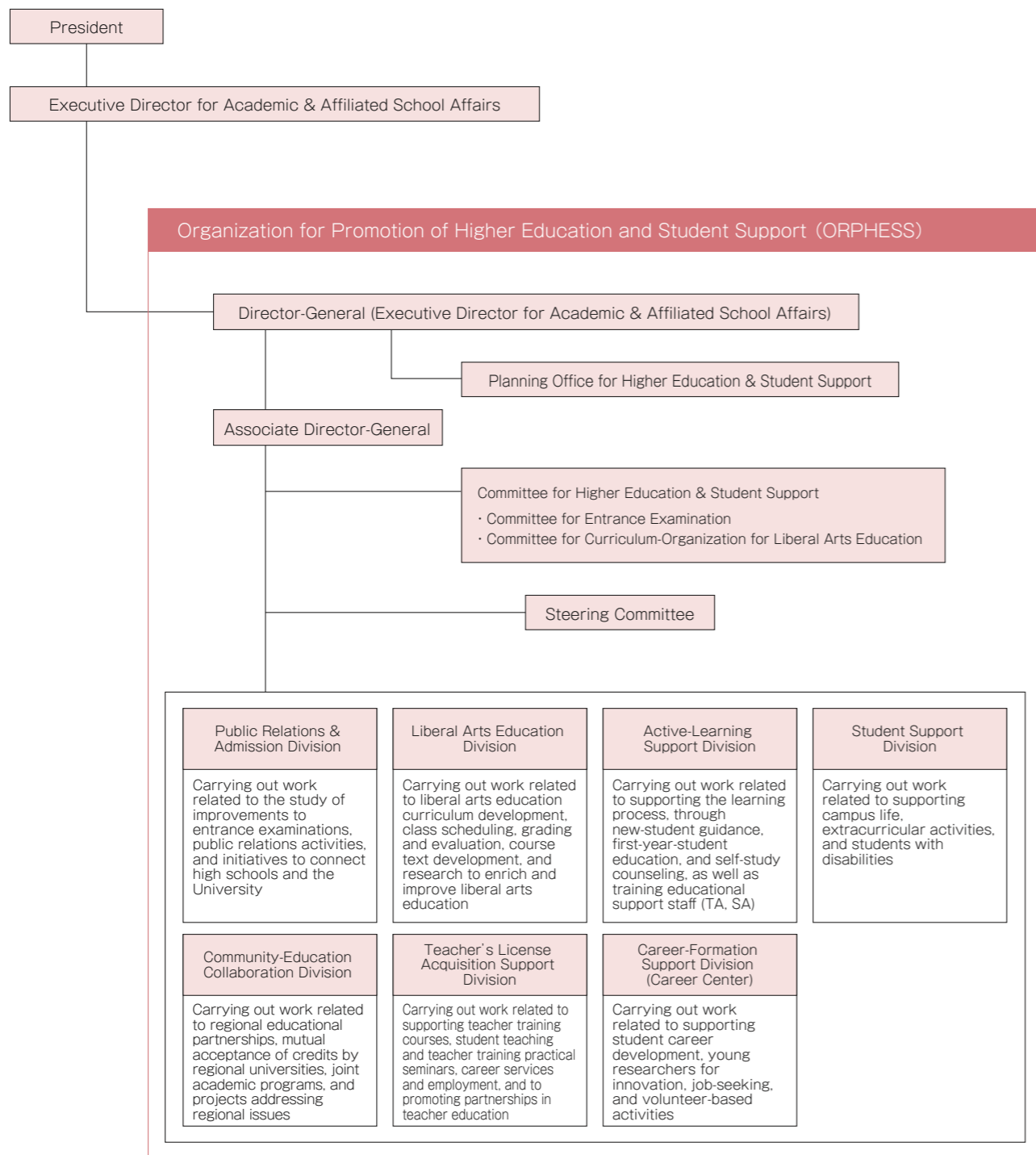
It has a seminar room for classes and lectures, an exhibition room where students' work and documents related to regional history and culture are displayed, and a meeting room that can be used as a center for fieldwork.



Hayano Residence Seminar House

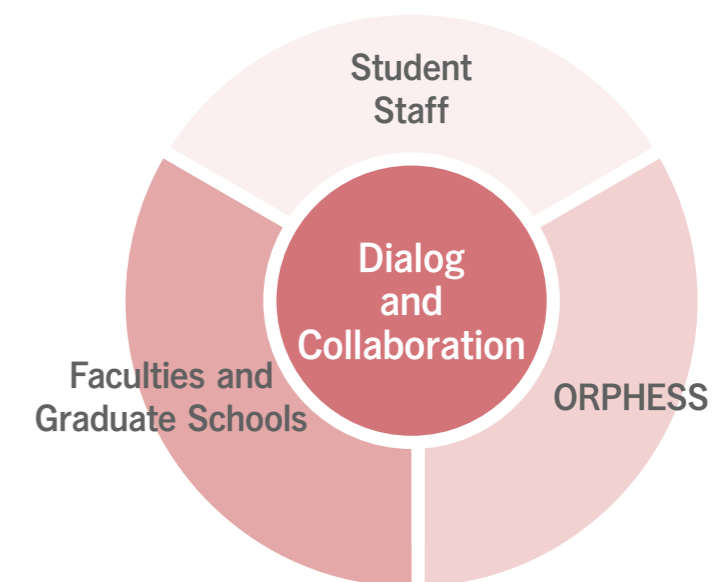
Organization for Promotion of Higher Education and Student Support

Organizational Chart



Gifu University strives to foster a carefully defined set of fundamental abilities in students through all educational activities, together with specialized skills on the part of each faculty and graduate school in accordance with its Diploma Policy, Curriculum Policy, and Admission Policy, which collectively govern all of the University's activities. To encourage each student to take a proactive approach to his or her education, we are committed to (1) enhancing structures that support learning from admission to graduation, as well as structures that support student life; (2) continually verifying that our undergraduate and graduate programs accord with our three aforementioned primary policies and striving to improve the University's structures; and (3) increasing the University's overall educational capabilities so as to more effectively maximize each faculty's potential. To achieve these goals, it is essential that we take a broad view of the entire University's educational activities when planning programs, working to improve each faculty and graduate school's educational activities, and implementing mechanisms to support student learning. The Organization for Promotion of Higher Education and Student Support (ORPHESS) is characterized by a commitment to bring faculties, graduate schools, and student staff together in dialog and collaboration in order to achieve the goals described above. ORPHESS was launched in December 2013 with staff members drawn from a variety of departments at the University.

- **ORPHESS/faculty matrix-type organization**
A structure designed to seamlessly combine specialized education offered by undergraduate faculties with a core education that is overseen by ORPHESS
- **Applying the results of individual optimization to facilitate overall optimization**
Application of results accumulated by faculties and other entities to the entire university from the standpoint of overall optimization
- **Reforming governance and transforming the organizational culture**
Consensus-building through dialog and collaboration and the facilitation of reform
- **A well-organized educational environment**
The University's single, integrated campus as a venue for daily dialog and collaboration



ORPHESS is also home to the Planning Office for Higher Education & Student Support, which handles responsibilities including offering advice and suggestions in response to inquiries from the Director-General of ORPHESS, evaluating and analyzing educational effectiveness, and planning and implementing the University's faculty development program. ORPHESS also includes seven Divisions—the Public Relations and Admission, Liberal Arts Education, Active-Learning Support, Student Support, Community-Education Collaboration, Teacher's License Acquisition Support, and Career-Formation Support (Career Center)—to facilitate planning and implementation.

The principal operational duties of ORPHESS are as follows:

- (1) Promoting and improving University-wide education
- (2) Planning and implementing general education
- (3) Planning and implementing student admissions, learning support, support for student life, career support, and support for other aspects of University life
- (4) Planning and implementing regional educational partnerships
- (5) Supporting teacher training course and promoting partnerships involving teacher education
- (6) Evaluating and analyzing educational effectiveness
- (7) Carrying out other duties as necessary in order to achieve the ORPHESS's goals

Educational Reform Initiatives

In an effort to advance reform in the educational sector, the Ministry of Education, Culture, Sports, Science and Technology selects and supports initiatives of an exceptional and distinctive character pursued by universities in the competitive environment of higher education. Gifu University has actively applied for the government programs and received recognition from the government.

Regional Knowledge Hub Development Program (University Center of Community Program)

Year	Program	Responsible Body
2013 to 2017	Creating Local Knowledge Bases in Gifu, Land of Clear Waters: A Regionally Integrated University	Gifu University, Gifu Prefecture, Gifu City, Takayama City, Gujo City
<p>This program is designed to strengthen the core role of universities in their local communities—a role in which they bring together a variety of human resources, information, and technologies for solving problems—by pursuing regionally-focused educational, research, and community service initiatives. While Gifu's rich natural environment and geographical characteristics provide its people with diverse natural features and blessings, its diversity also causes regional challenges to present themselves in diverse forms. Gifu University is working with local governments, including Gifu Prefecture, Gifu City, Gujo City, and Takayama City, to address this diverse range of local challenges along the following three axes:</p> <ol style="list-style-type: none"> 1. Fostering the development of regionally integrated human resources (regionally focused human resources) 2. Providing a venue for dialog about regional issues among local governments, local residents, universities, and others 3. Developing and exploring scholarly research domains with a regional focus (regionally focused research work) <p>This program seeks to realize a "land of clear waters that we create together" by sweeping away the borders between faculties and fields and bringing all of the University's resources to bear, with a focus on the newly created Center for Collaborative Study with Community.</p>		

Training Program for Oncology Specialist

Year	Program	Responsible Body
2012 to 2016	Training Medical Specialists in Cross-Departmental Cancer Treatment	Nagoya University, Gifu University, and five other universities in the Tokai region
<p>This program seeks to develop the capability for training human resources to oversee cross-tissue cancer treatment and research as well as medical specialists in radiation therapy and palliative care while revitalizing educational programs in a way that takes advantage of the distinctive characteristics of individual universities in the Tokai region as led by Nagoya University. The goal of the medical specialists it trains will be to create and develop new treatment structures and educational centers capable of carrying out advanced cancer treatment and research in the Tokai region. This becomes possible by giving full play to specialized expertise in the context of cross-departmental team medicine linking treatment departments specializing in different organs and experts in other occupations.</p>		

Dissemination Program for Tenure Track System

Year	Program	Responsible Body
2011 to 2018	Dissemination Program for Tenure Track System	Faculty of Engineering, Faculty of Applied Biological Sciences, Graduate School of Medicine
<p>This program seeks to establish a tenure track system to serve as a new human resource development system for recruiting and retaining talented young researchers to form bases for creative and advanced research with a focus on the environmental and life sciences as set forth in Gifu University's Mid-Term Objectives and Mid-Term Plan. Specifically, it provides organizational support for recruiting young researchers in Japan and overseas through an international application process, hiring them by means of a fair and highly transparent screening process, transitioning from fixed-term employment to more stable employment without fixed time limits via a review process, and ensuring the ability of employees responsible for research to do their work within an independent research environment.</p>		

Number of Students

Undergraduate

As of May 1, 2015

Faculty / School	Admission Capacity	Third Year Transfer Students	Enrollment						Total
			1 st year	2 nd year	3 rd year	4 th year	5 th year	6 th year	
Education	250		260 (150)	259 (145)	250 (144)	283 (145)			1,052 (584)
Regional Studies	100	10	108 (66)	109 (67)	116 (72)	142 (76)			475 (281)
School of Medicine	Medicine Course	110	2 (0)	2 (1)	2 (1)	3 (2)			9 (4)
	Nursing Course	80	112 (37)	119 (26)	106 (26)	112 (29)	92 (19)	112 (26)	653 (163)
Engineering			81 (78)	78 (72)	81 (75)	78 (78)			318 (303)
			538 (94)	583 (91)	520 (70)	675 (71)			2,316 (326)
Applied Biological Sciences	Course of Applied Life Science *1	160	5 (2)	5 (2)	7 (2)	8 (2)			25 (8)
	Course of Agricultural and Environmental Science		173 (103)	176 (99)	172 (86)	178 (100)			699 (388)
	Joint Department of Veterinary Medicine *2	30		2 (1)					2 (1)
Total Number of Undergraduate Students	1,240	60	32 (17)	34 (16)	30 (17)	37 (23)	31 (12)	33 (23)	197 (108)
			7 (2)	10 (4)	10 (3)	11 (4)			38 (13)

The number of "Enrollment" includes international students. () indicates the number of female students, and the lower row shows the number of international students (the number included in the parentheses on the right).

*1 "Enrollment" for the Course of Applied Life Science includes the number of Life Science for Food Course students before renaming the course.

*2 "Enrollment" for the Joint Department of Veterinary Medicine includes the number of Veterinary Medicine Course students before renaming the course.

Graduate

Professional Degree Program (Teacher Education Course)

As of May 1, 2015

Graduate School	Program	Admission Capacity	Enrollment			Degree
			1 st year	2 nd year	Total	
Education	Professional Degree Program	20	21 (8)	17 (2)	38 (10)	Master of Education (professional)
					0 (0)	

Master's Program

As of May 1, 2015

Graduate School	Program	Admission Capacity	Enrollment			Degree
			1 st year	2 nd year	Total	
Education	Master's Program	49	50 (23)	56 (29)	106 (52)	Master of Education
			3 (0)	1 (0)	4 (0)	
Regional Studies	Master's Program	20	18 (11)	25 (12)	43 (23)	Master of Regional Studies
			7 (4)	12 (8)	19 (12)	
Medicine	Master's Program	8	9 (8)	9 (7)	18 (15)	Master of Nursing
					0 (0)	
	Master's Program	11	10 (0)	15 (2)	25 (2)	Master of Regeneration and Advanced Medical Sciences
				0 (0)	0 (0)	
Engineering	Master's Program	275	318 (34)	327 (27)	645 (61)	Master of Engineering
			19 (6)	21 (7)	40 (13)	
Applied Biological Sciences	Master's Program	89	102 (44)	93 (45)	195 (89)	Master of Applied Biological Sciences
			18 (10)	14 (7)	32 (17)	

Doctoral Program

As of May 1, 2015

Graduate School	Program	Admission Capacity	Enrollment				Total	Degree
			1 st year	2 nd year	3 rd year	4 th year		
Medicine *1	Doctoral Program	47	32 (9)	34 (9)	32 (7)	78 (16)	176 (41)	Ph.D. in Medical Sciences
			2 (0)	1 (1)	2 (2)	1 (0)	6 (3)	
	Doctoral Program	6	3 (2)	3 (1)	9 (4)		15 (7)	Ph.D. in Regeneration and Advanced Medical Sciences
			2 (1)	2 (0)	1 (1)		5 (2)	
Engineering	Doctoral Program	27	23 (8)	19 (2)	46 (8)		88 (18)	Ph.D. in Engineering
			12 (6)	6 (1)	15 (4)		33 (11)	
United Graduate School of Agricultural Science	Doctoral Program *2	20	19 (8)	20 (9)	37 (18)		76 (35)	Ph.D. in Agricultural Science
			11 (5)	11 (8)	15 (8)		37 (21)	
United Graduate School of Veterinary Sciences	Doctoral Program	20	38 (11)	25 (3)	25 (7)	34 (11)	122 (32)	Ph.D. in Veterinary Science
			14 (6)	7 (2)	6 (1)	7 (2)	34 (11)	
United Graduate School of Drug Discovery and Medical Information Sciences	Doctoral Program *2	6	6 (1)	11 (5)	9 (1)		26 (7)	Ph.D. in Engineering, Medical Science, or Pharmaceutical Science
			0	3 (2)	1 (0)		4 (2)	

Total Number of Graduate Students	598	1573 (392)
		214 (92)

The number of "Enrollment" includes international students. () indicates the number of female students, and the lower row shows the number of international students (the number included in the parentheses on the right).

*1 "Enrollment" for the Graduate School of Medicine includes the student number of Graduate School of Medical Sciences before reorganization.

*2 United Graduate School of Agricultural Science and United Graduate School of Drug Discovery and Medical Information Sciences have three-year Doctoral Program only.

Number of Students of the United Graduate Schools by Participating University

As of May 1, 2015

United Graduate School	Participating University	Enrollment				Total
		1 st year	2 nd year	3 rd year	4 th year	
Agricultural Science	Shizuoka University	2 (2)	6 (2)	12 (2)		20 (6)
	Gifu University	17 (6)	14 (7)	25 (16)		56 (29)
Veterinary Sciences	Obihiro University of Agriculture and Veterinary Medicine	6 (1)	1 (0)	4 (1)	6 (2)	17 (4)
	Iwate University	4 (0)	6 (0)	3 (1)	5 (1)	18 (2)
	Tokyo University of Agriculture and Technology	17 (7)	10 (3)	8 (1)	10 (7)	45 (18)
	Gifu University	11 (3)	8 (0)	10 (4)	13 (1)	42 (8)

The number of "Enrollment" includes international students. () indicates the number of female students (the number included in the parentheses on the right).

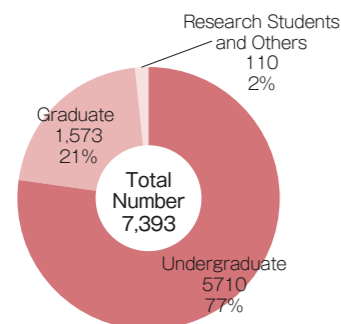
Research Students / Non-Degree-Seeking Students / Auditing Students

As of May 1, 2015

	Research Students	Special Research Students	Non-Degree-Seeking Students	Auditing Students	Special Auditing Students	External Training Course for In-service Teachers	International Students in Japanese Language and Culture Studies Course	Total
Faculty of Education	3 (3)		2					5 (3)
Faculty of Regional Studies	14 (14)			3	4 (4)			21 (18)
School of Medicine	18 (1)							18 (1)
Faculty of Engineering	5 (4)				3 (3)			8 (7)
Faculty of Applied Biological Sciences	4 (4)		1		1 (1)			6 (5)
Graduate School of Education	1 (1)	1 (1)	1					3 (2)
Graduate School of Regional Studies								0
Graduate School of Medicine	1	6						7
Graduate School of Engineering	2 (2)	3 (1)	1					6 (3)
Graduate School of Applied Biological Sciences	1 (1)							1 (1)
United Graduate School of Drug Discovery and Medical Information Sciences		2						2
Organization for Promotion of Higher Education and Student Support				1				1
River Basin Research Center	2 (2)							2 (2)
Life Science Research Center	1 (1)							1 (1)
International Student Center					6 (6)		10 (10)	16 (16)
Gifu Network University Consortium*					13			13
Total	52 (33)	12 (2)	5	4	27 (14)	0	10 (10)	110 (59)

* Gifu Network University Consortium is the association of universities consisted of Gifu Prefecture and 22 universities in the prefecture. Students are able to take courses at other universities, and the earned credits are transferable under the credit transfer system. The figure in brackets indicates the number of international students and is included in the total.

Number of Students



Affiliated Schools, Faculty of Education

As of May 1, 2015

School	Class	Number of Classes	Admission Capacity	Total Number of Students
Elementary School	Regular Class	18	105	657
	Special Needs Class	3	4	18
Junior High School	Regular Class	12	160	473
	Special Needs Class	3	8	23
Total				1,171

Applicants and Admissions

As of April 1, 2015

Undergraduate

2015

Faculty/School	Admission Capacity	1 st year Students				3 rd year Transfer Students					
		Applicants	Examinees	Admitted	Matriculated	Admission Capacity	Applicants	Examinees	Admitted	Matriculated	
Education	250	1,501	1,007	284	261	-	-	-	-	-	
Regional Studies	100	506	348	125	108	10	34	30	11	10	
School of Medicine	Medical Course	110	1,547	569	110	110	-	-	-	-	
	Nursing Course	80	354	262	82	80	10	11	8	0	0
Engineering	510	2,569	1,795	579	528	30	95	91	61	39	
Applied Biological Sciences	Course of Applied Life Science Course of Agricultural and Environmental Science	160	608	442	189	173	10	40	40	14	11
	Joint Department of Veterinary Medicine	30	158	147	32	32	-	-	-	-	-
Total	1,240	7,243	4,570	1,401	1,292	60	180	169	86	60	

The number of applicants to the School of Medicine does not include the examinees who failed in the first screening process conducted at the general examination and the latter half of the examination schedule. The number of privately-financed international students included.

Graduate

2015

Graduate School	Admission Capacity	Applicants	Examinees	Admitted	Matriculated	
Education	20	26	26	23	21	
Regional Studies	Professional Degree Program (Teacher Education Course)	49	82	76	60	50
	Master's Program	20	24	22	19	18
Medicine	Regeneration and Advanced Medical Sciences (Master's Program)	11	10	10	10	10
	Nursing Sciences (Master's Program)	8	12	12	9	9
	Medical Sciences (Doctoral Program)	47	33	33	32	32
	Regeneration and Advanced Medical Sciences (Doctoral Program)	6	4	4	4	3
Engineering	Master's Program	275	381	366	335	318
	Doctoral Program	27	24	22	22	21
Applied Biological Sciences	Master's Program	89	116	113	102	98
United Graduate School of Agricultural Science	Doctoral Program	20	17	17	17	15
United Graduate School of Veterinary Sciences	Doctoral Program	20	32	32	30	30
United Graduate School of Drug Discovery and Medical Information Sciences	Doctoral Program	6	6	6	6	6
Total	598	767	739	669	631	

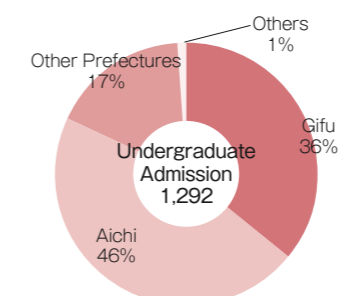
Two students are scheduled to be enrolled in the United Graduate School of Agricultural Science in October. The number of international students included.

Undergraduate Admission by Locations of High Schools

2015

Faculty/School	Gifu	Aichi	Mie	Shizuoka	Shiga	Fukui	Kyoto	Tokyo	Other Prefectures	*Others	Total
Education	135	93	4	5	7	2	1	0	14	0	261
Regional Studies	56	43	4	0	0	0	1	0	1	3	108
School of Medicine	74	60	4	2	3	2	4	9	32	0	190
Engineering	158	319	9	7	8	3	2	1	14	7	528
Applied Biological Sciences	50	76	13	6	4	4	6	2	44	0	205
Total	473	591	34	20	22	11	14	12	105	10	1,292

* "Others" include Certificate for Students Achieving the Proficiency Level of Upper Secondary School Graduates, foreign schools, etc. The number of third year transfer students excluded. The number of international students included.

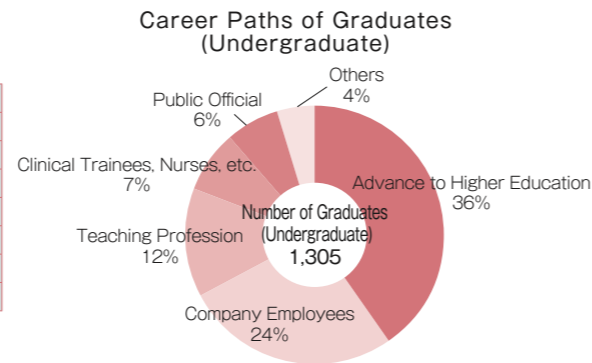


Number of Graduates (Undergraduate) / Career Paths

Number of Graduates (Undergraduate)

Faculty/School	2014	Cumulative Total *1
Education	252	17,457
Regional Studies	117	1,694
School of Medicine	176	4,667
Engineering	560	22,095
Day Course	560	22,095
Evening Course	0	847
Applied Biological Sciences	200	12,546*2
Total	1,305	59,306

* 1 Cumulative Total is the total number of degree awarded since the foundation of each faculty
 * 2 Graduates of Faculty of Agriculture included.



Career Paths of 2014 Graduates

As of May 1, 2015

Faculty/School Classification	Education	Regional Studies	School of Medicine		Engineering	Applied Biological Sciences	Total
			Medical	Nursing			
Graduates	252 (142)	117 (68)	97 (23)	79 (74)	560 (76)	200 (108)	1,305 (491)
Advance to Higher Education	44 (16)	5 (2)	1 (0)	2 (2)	329 (29)	82 (37)	463 (86)
Company Employees	194 (118)	102 (59)		73 (68)	217 (45)	107 (65)	693 (355)
Adult Students (Staying in Workforce)							
Clinical Trainees			91 (23)				91 (23)
Others	14 (8)	10 (7)	5 (0)	4 (4)	14 (2)	11 (6)	58 (27)
Total	252 (142)	117 (68)	97 (23)	79 (74)	560 (76)	200 (108)	1,305 (491)

Employment Status by Industry

Faculty/School Field of Business	Education	Regional Studies	School of Medicine		Engineering	Applied Biological Sciences	Total
			Medical	Nursing			
Agriculture, Forestry and Fisheries						13 (6)	13 (6)
Mining and Quarrying							
Construction		3 (1)			11	1 (1)	15 (2)
Manufacturing		9 (6)			111 (21)	25 (16)	145 (43)
Utility					2 (1)		2 (1)
Information and Communications	2 (2)	10 (8)			31 (11)	2	45 (21)
Transport and Postal Services	5 (3)				2	1 (1)	8 (4)
Wholesale and Retail Business	3 (2)	17 (10)			5 (1)	7 (6)	32 (19)
Finance and Insurance	3 (2)	12 (11)			3 (2)	4 (2)	22 (17)
Real Estate Business	1 (1)	5 (3)			1	1 (1)	8 (5)
Scientific Research, Professional and Technical Services	1 (1)	4 (1)			16 (2)	8 (7)	29 (11)
Accommodation and Eatery		1 (1)				11 (4)	12 (5)
Life-related Services and Entertainment	4 (1)	4 (3)			3	2 (2)	13 (6)
School Education	141 (90)	1 (1)		1 (1)	4	4 (2)	151 (94)
Education Support Business	5 (2)	1			2 (1)	2	10 (3)
Medical, Health Care and Welfare	2 (2)	4 (2)		72 (67)	1	1 (1)	80 (72)
Social Insurance, Social Welfare and Care Services	3 (2)	1					4 (2)
Co-op		6 (4)			2 (1)		8 (5)
Religion, Other Services	5 (3)	2 (1)			2 (1)		9 (5)
State Government Services	1	4 (1)			5 (2)	5 (3)	15 (6)
Local Government Services	18 (7)	18 (6)			15 (2)	18 (11)	69 (26)
Others					1	2 (2)	3 (2)
Total	194 (118)	102 (59)		73 (68)	217 (45)	107 (65)	693 (355)

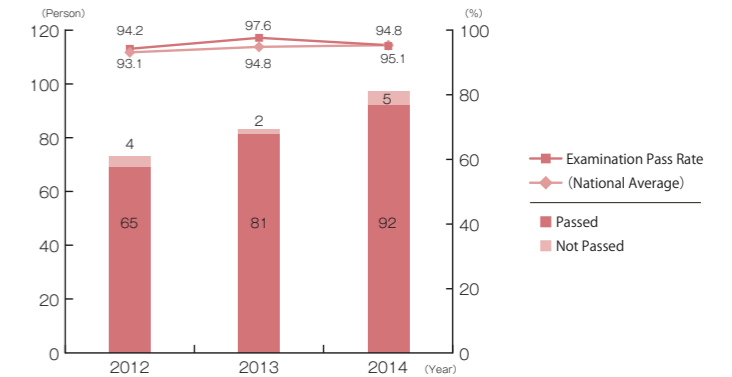
() indicates the number of female students (the number included in the parentheses on the right).

Medical Licensing Examination Pass Rate / Teacher Employment Rate

National Examination for Medical Practitioners

	2012	2013	2014
Examinees	69	83	97
Passed	65	81	92
Not Passed	4	2	5
Examination Pass Rate	94.2%	97.6%	94.8%
(National Average)	93.1%	94.8%	95.1%

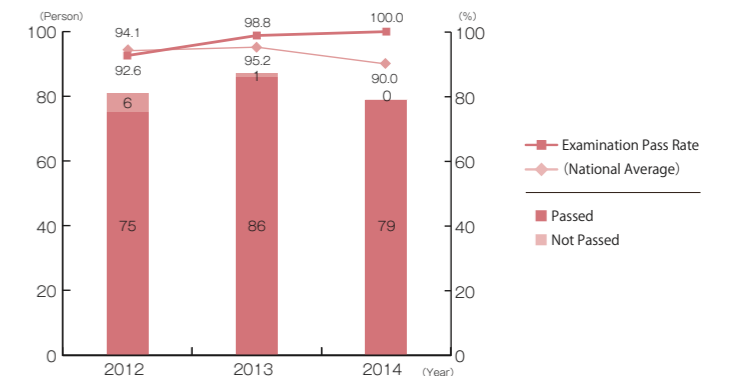
New graduates only.



National Nursing Examination

	2012	2013	2014
Examinees	81	87	79
Passed	75	86	79
Not Passed	6	1	0
Examination Pass Rate	92.6%	98.8%	100.0%
(National Average)	94.1%	95.2%	90.0%

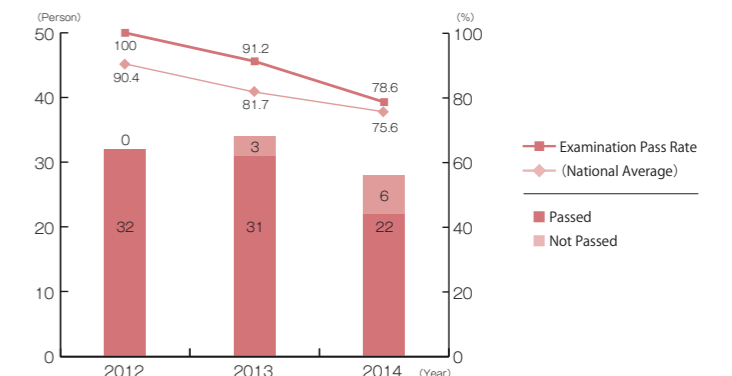
New graduates only.



National Veterinary Examination

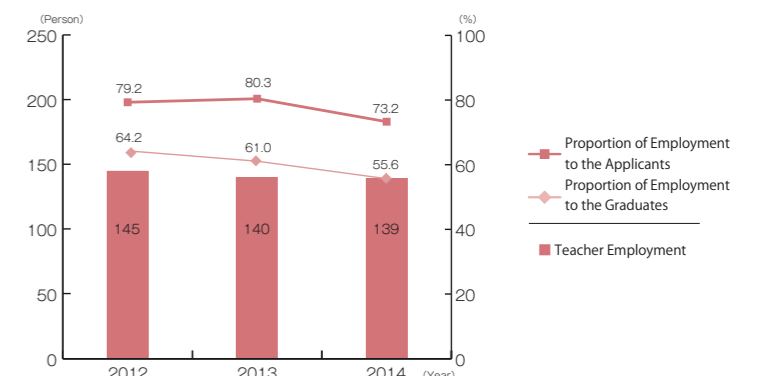
	2012	2013	2014
Examinees	32	34	28
Passed	32	31	22
Not Passed	0	3	6
Examination Pass Rate	100.0%	91.2%	78.6%
(National Average)	90.4%	81.7%	75.6%

New graduates only.



Teacher Employment Rate (Faculty of Education)

	2012	2013	2014
Graduates	226	228	250
Applicants	183	173	190
Employment (Temporary Teacher)	145	139	139
Proportion of Employment to the Applicants	79.2%	80.3%	73.2%
Proportion of Employment to the Graduates	64.2%	61.0%	55.6%

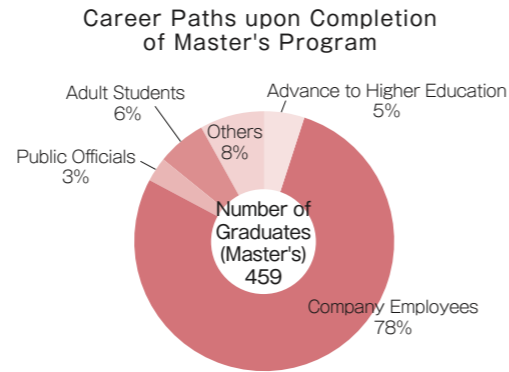


Number of Graduates (Graduate School) / Career Paths

Number of Master's Degrees Awarded

Master's Degree	2014	Cumulative Total*
Education	69	1,187
Regional Studies	16	256
Regeneration and Advanced Medical Sciences	8	164
Nursing	5	60
Engineering	287	6,967
Applied Biological Sciences	74	2,625*2
Total	459	11,259

* 1 Cumulative Total is the total number of degree awarded since the foundation of each faculty
 * 2 Graduates of Faculty of Agriculture included.



Career Paths of 2014 Graduates (Master's Program)

As of May 1, 2015

Graduate School / Classification	Education		Regional Studies	Medicine (Nursing Science)	Medicine (Regeneration and Advanced Medical Sciences)	Engineering	Applied Biological Sciences	Total
	Master's Program	Professional Degree Program	Master's Program	Master's Program	Master's Program	Master's Program	Master's Program	
Graduates	49 (28)	20 (7)	16 (9)	5 (5)	8 (2)	287 (30)	74 (32)	459 (113)
Advance to Higher Education	1			1 (1)		15 (5)	8 (2)	25 (8)
Company Employees	35 (19)	6 (2)	4 (1)		7 (2)	260 (21)	59 (28)	371 (73)
Adult Students (Staying in Workforce)	8 (6)	14 (5)	2	4 (4)				28 (15)
Clinical Trainees								
Others	5 (3)		10 (8)		1	12 (4)	7 (2)	35 (17)
Total	49 (28)	20 (7)	16 (9)	5 (5)	8 (2)	287 (30)	74 (32)	459 (113)

Employment Status by Industry

Graduate School / Field of Business	Education		Regional Studies	Medicine (Nursing Science)	Medicine (Regeneration and Advanced Medical Sciences)	Engineering	Applied Biological Sciences	Total
	Master's Program	Professional Degree Program	Master's Program	Master's Program	Master's Program	Master's Program	Master's Program	
Agriculture, Forestry and Fisheries							4 (2)	4 (2)
Mining and Quarrying								
Construction						2		2
Manufacturing					2	189 (18)	26 (11)	217 (29)
Utility				1		5 (1)	3 (2)	9 (3)
Information and Communications	1		2 (1)		2	30 (1)	2 (1)	37 (3)
Transport and Postal Services						9		9
Wholesale and Retail Business	1 (1)						5 (3)	6 (4)
Finance and Insurance								
Real Estate Business								
Scientific Research, Professional and Technical Services						14 (1)	5 (3)	19 (4)
Accommodation and Eatery							1	1
Life-related Services and Entertainment	1							1
School Education	27 (14)	6 (2)				1	1 (1)	35 (17)
Education Support Business						2	1	3
Medical, Health Care and Welfare	1 (1)				2 (2)		2 (1)	5 (4)
Social Insurance, Social Welfare and Care Services	3 (3)		1					4 (3)
Co-op							1 (1)	1 (1)
Religion, Other Services						4		4
State Government Services						2		2
Local Government Services	1		1			2	6 (3)	10 (3)
Others							2	2
Total	35 (19)	6 (2)	4 (1)	7 (2)	260 (21)	59 (28)	371 (73)	

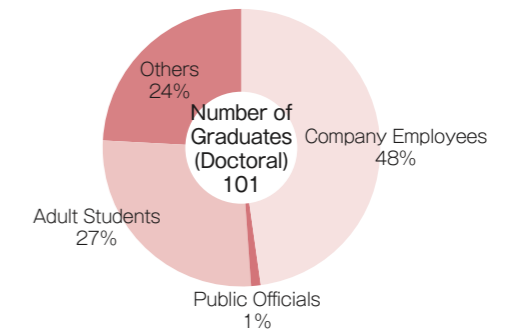
() indicates the number of female students (the number included in the parentheses on the right).

Number of Doctoral Degrees Awarded

Doctoral Degree		2014	Cumulative Total*
Medical Sciences	Course Doctorate	36	928
	Dissertation Doctorate	6	1475
Regeneration and Advanced Medical Sciences	Course Doctorate	0	61
	Dissertation Doctorate	0	6
Engineering	Course Doctorate	26	483
	Dissertation Doctorate	2	74
Agricultural Science	Course Doctorate	14	645
	Dissertation Doctorate	3	144
Veterinary Science	Course Doctorate	18	442
	Dissertation Doctorate	7	137
Pharmaceutical Science	Course Doctorate	1	17
	Dissertation Doctorate	0	2
Medical Science	Course Doctorate	1	7
	Dissertation Doctorate	0	0
Total		114	4,421

* Cumulative Total is the total number of degree awarded since the foundation of each faculty

Career Paths upon Completion of Doctoral Program



Career Paths of 2014 Graduates (Doctoral Program)

As of May 1, 2015

Graduate School / Classification	Medicine (Regeneration and Advanced Medical Sciences)	Medicine (Medical Sciences)	Engineering	United Graduate School of Agricultural Science	United Graduate School of Veterinary Sciences	United Graduate School of Drug Discovery and Medical Information Sciences	Total
	Doctoral Program	Doctoral Program	Doctoral Program	Doctoral Program	Doctoral Program	Doctoral Program	
Graduates	2	36 (6)	25 (3)	17 (5)	18 (8)	3 (1)	101 (23)
Advance to Higher Education							
Company Employees	1	34 (6)	8	3 (1)	3 (2)		49 (9)
Adult Students (Staying in Workforce)			8	7 (3)	11 (4)	2 (1)	28 (8)
Clinical Trainees							
Others	1	2	9 (3)	7 (1)	4 (2)	1	24 (6)
Total	2	36 (6)	25 (3)	17 (5)	18 (8)	3 (1)	101 (23)


Employment Status by Industry

Graduate School / Field of Business	Medicine (Regeneration and Advanced Medical Sciences)	Medicine (Medical Sciences)	Engineering	United Graduate School of Agricultural Science	United Graduate School of Veterinary Sciences	United Graduate School of Drug Discovery and Medical Information Sciences	Total
	Doctoral Program	Doctoral Program	Doctoral Program	Doctoral Program	Doctoral Program	Doctoral Program	
Agriculture, Forestry and Fisheries							
Mining and Quarrying							
Construction							
Manufacturing			1	1			2
Utility			1				1
Information and Communications			1				1
Transport and Postal Services							
Wholesale and Retail Business							
Finance and Insurance							
Real Estate Business							
Scientific Research, Professional and Technical Services				1 (1)	1		2 (1)
Accommodation and Eatery							
Life-related Services and Entertainment							
School Education		3	5	1			9
Education Support Business							
Medical, Health Care and Welfare	1	31 (6)					32 (6)
Social Insurance, Social Welfare and Care Services							
Co-op					1 (1)		1 (1)
Religion, Other Services							
State Government Services							
Local Government Services					1 (1)		1 (1)
Others							
Total	1	34 (6)	8	3 (1)	3 (2)		49 (9)

() indicates the number of female students (the number included in the parentheses on the right). Dropouts after acquisition of certain academic credits included. The number of Graduate School of Medical Sciences is included in Graduate School of Medicine (Doctoral Course).

Student Support Facility

Welfare Facilities

Facility	Dining Hall / Cafe	Store	Extracurricular Activity Room	Student Service
University Hall	First Dining Hall (452 seats) Vending Machines Lounge Repos (Ramen Restaurant)	Store, Bookstore ATM	Hall Music Room Meeting Room 1 to 6 Meeting Room 9 to 11 (Meeting Room 9 and 11 are Japanese Rooms.)	Career Center Special Needs Student Office Camomile Cafe (Gender Equality Promotion Office)
Second Dining Hall	Dining Hall (520 seats) Convenience Store "PECO" (13 seats)	Store, Bookstore		
School of Medicine Education and Supporting Services Building	Dining Hall in Medical Building (156 seats)			

University Hall

Student Dormitory

	Number of Rooms	Capacity (Person)
Kurono Student Dormitory 1-1 Yanagido, Gifu City	200 (male)	200
	75 (female)	75



Kurono Student Dormitory

Sports Facilities / Facilities for Extracurricular Activities

Facility	Descriptions	Facility	Descriptions	
Indoor Sports Facility	Gymnasium	Common Facility for Sports Club	10 Common Rooms (2 clubs per room), 1 Meeting Room	
	Japanese Martial Arts Gymnasium	Common Facility for Culture, Arts and Science Club	10 Common Rooms (1 Japanese Room) (2 to 4 clubs per room)	
	Kyudo Field	Facility for Extracurricular Activities	Multipurpose Accommodation Facility	4 Training Rooms / Sleeping Quarters, Bathroom, Dining Room
Athletic Field	400 meters x 8 courses		Extracurricular Seminar House	30 Guest Rooms, Hall, 2 Lounges, 6 Guest Rooms for Clinical Trainees
Ballpark				
Tennis Courts	12 courts (6 grass courts, 6 all weather type courts)		Motor Garage	
Volleyball Courts	4 courts (all weather type courts)		Glider Hangar	
Handball Courts	2 courts (1 clay court, 1 all weather type court)		Stable / Equestrian Ground	
Basketball Courts	3 courts (all weather type courts)		Archery Field	
Soccer Field	1 Soccer Ground			
Rugby Field	1 Rugby Ground			
Swimming Pool	1 Swimming Pool (50 meters x 8 courses)			

Student Club Activity

Gifu University Student Clubs / Circles

As of May 1, 2015

Organizing Committee / Council (4)
Gifu University Festival Committee
Gifu University Spring Festival Committee
Gifu University Career Fair Committee
Gifu University Circle Council

Culture, Arts and Science Clubs (32)

Acoustic Guitar Circle -Hiromu-
Go (Japanese Board Game)
Performing Arts
Action Group for Student Campus Life
Students Volunteer Safety and Fire Corps
Broadcasting, RadiSta
Orchestra
Guitar & Mandolin
Foodie Club
Popular Music
Chorus
Tea Ceremony
Puppet Play for Children
Photography
Shogi (Japanese Chess)
Brass Band
Biological Science
Tsukinowaguma (Asiatic Black Bear) Study
Zoo Club
Dream Box (Humane Society)
Art
Student Folk Song Music Band
Writing Fairy Tales
Japanese Music
Star Watching
Manga
Youth Hostel
UNESCO
Rakugo Comic Storytelling
Ryugaku Love (International Exchange)
Three trees (Greening)
Robocon (Robot Contest)

Sports Clubs (36)

Archery
Aikido
American Football
Canoe
Karate
Kendo (Swordsmanship)
Kyudo (Japanese Archery)
Glider
Tennis
Baseball (Hardball)
Cycling
Soccer
Mountain Climbing
Automobile
Judo
Baseball (Semi-Hardball)
Shorinjikempo Martial Arts
Swimming
Soft Tennis
Softball
Gymnastics
Table Tennis
Dance
Cheerleading
Tae Kwon Do
Equestrian
Basketball
Badminton
Volleyball
Handball
Formula JSAE Project
Yosakoi Dance Circle
Lacrosse
Rugby
Track & Field
Wander Vogel

Sports Clubs for Medical Students (21)

Table Tennis
Men's Volleyball
Women's Volleyball
Basketball
Kendo (Swordsmanship)
Kyudo (Japanese Archery)
Tennis
Soft Tennis
Baseball (Semi-Hardball)
Skiing
Badminton
Mountain Climbing
Swimming
Track & Field
Rugby
Handball
Golf
Soccer
Bowling
AAC (Tennis) [Anti-aging club]
Boat

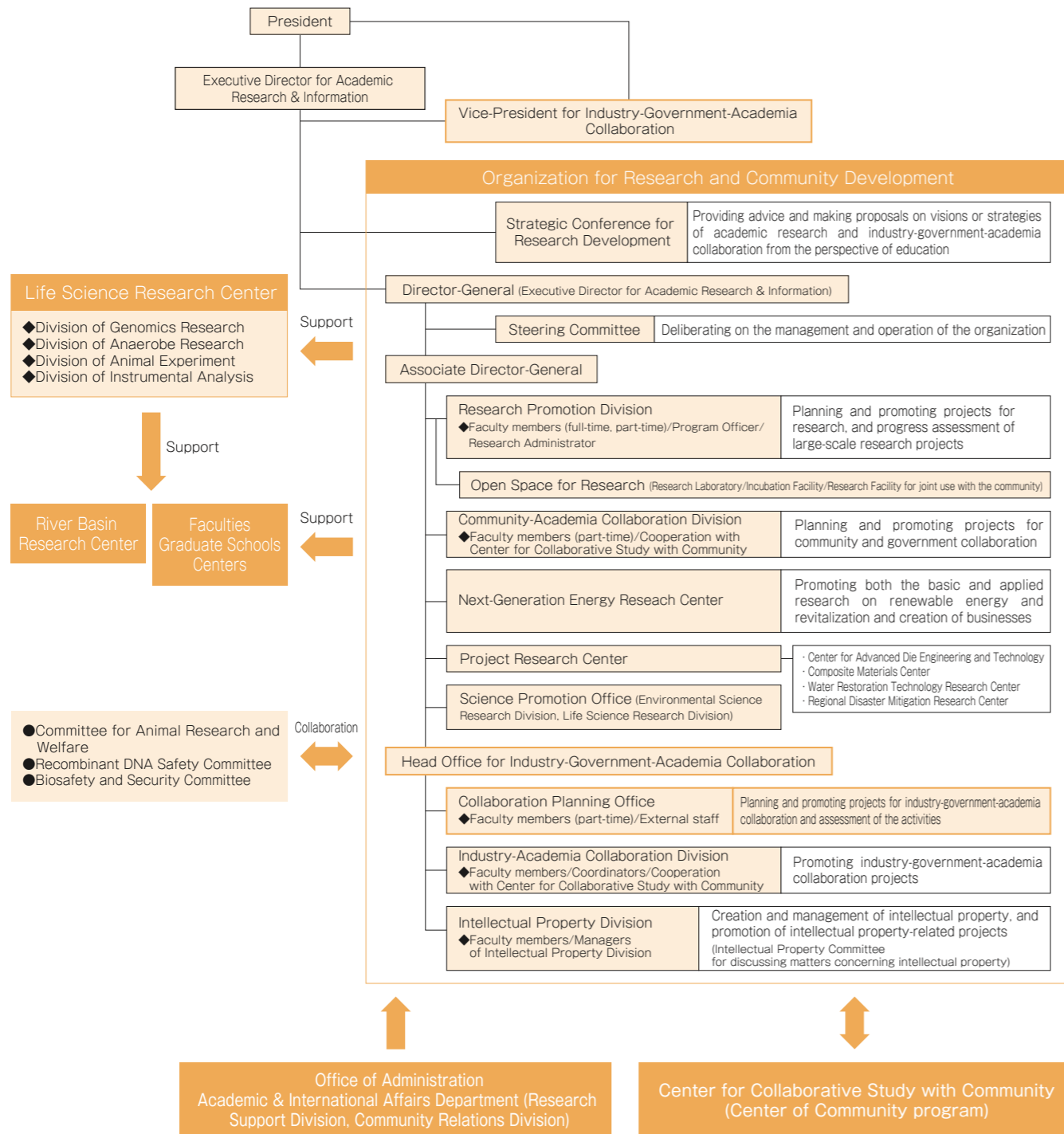
Culture, Arts and Science Clubs for Medical Students (16)

Liebe Parze (Jazz)
Tropical Medicine
Castanuela (Band)
Chamber Orchestra
Piano
Kirin no Kai (Study Group of Clinical Skill)
Okuhotaka Medical Club
Medical Student Association "Sarubobo"
Koto Music
Art
Cooking
Gifu Medical Care
English
Go (Japanese Board Game)
GEMS (Gifu Emergency Medical Study)
GIFMSA (Gifu International Federation of Medical Students' Association)

Besides the listed above, there are 54 other clubs.

Organization for Research and Community Development

Organization Chart



Research Initiatives

Next-Generation Energy Research Center (Established in April 2015)

The Next-Generation Energy Research Center conducts research for the development of next-generation forms of energy, namely renewable energy, hydrogen energy, and thermal energy. Renewable energy is an inexhaustible and environmentally friendly resource, but its low density and instability are major problems. To solve these problems, we need to identify the best mix of traditional energy and renewable energy. We also need to consider electric and energy storage technologies, bidirectional and efficient conversion between electricity and hydrogen. In addition, fuel cell vehicles, electric vehicles, effective supplies of energy to these vehicles, as well as a new traffic systems designed for such vehicles in urban environments are the major challenges for the Center.

[Research Division] (Number of People)

R&D Division of Next-Generation Photovoltaic Systems (19), R&D Division of Next-Generation Biomass Energy Systems (4), R&D Division of Next-Generation Biological Resource Applications (4), R&D Division of Next-Generation Energy Storage and Carrier Systems (2), R&D Division of Next-Generation Energy Forecasting Technologies (4), R&D Division of Next-Generation Thermal Energy Systems (2), R&D Division of Next-Generation Smart Grid Stabilization Technologies (4), R&D Division of Next-Generation EV · Transportation · Urban Form (2) 41 people in total

Project Research Center

The Project Research Center consists of four centers which promote project research in the interdisciplinary field.

Center for Advanced Die Engineering and Technology (Established in July 2006)

The Center for Advanced Die Engineering and Technology was established, after receiving the Special Coordination Funds for Promoting Science and Technology in 2006 from the Ministry of Education, Culture, Sports, Science and Technology. The Center aims to produce creative and motivated professionals through innovative education in die engineering, and offers “one-stop education” on the manufacturing process to fourth-year students and graduate students in cooperation with the community. The Center also actively promotes continued education and joint research studies with local enterprises with the purpose of contributing to regional development.

[Research Division] (Number of People)

Materials and Machining Division (5), Solid Material Forming Division (plastic forming) (8), Molten Material Forming Division (injection molding, casting) (4), Machine Components Related to Die and Mold Field Division (4) 21 people in total

Composite Materials Center (Established in April 2012)

The Composite Materials Center was established to promote the “Gifu Technological Innovation Program” for the development of the local industry from an educational perspective. By making composite materials into materials applicable to manufacturing, the Center supports their practical use in regional companies that offer composite material products.

The Center's primary focus is on applying composite materials to lightweight structural components, which it aims to achieve through the research and development manufacturing and processing technologies involving such materials.

[Research and Development Group] (Number of People)

Materials & Process Innovation Group (17), Recycling & Reuse Technology Group (15), Industrial Application Group (6) 38 people in total

Water Restoration Technology Research Center (Established in April 2013)

The Water Restoration Technology Research Center was established with the cooperation of the Gifu Environment Management and Technology Center to promote field surveys and research activities for the conservation of water environments, and particularly surveys and research that lead to the improvement of the functions of distributed on-site small scale wastewater treatment facilities, higher water quality in channels and associated bodies of water that receive the treated wastewater. Through the field surveys and research activities conducted in cooperation with engineers from relevant enterprises, the Center focuses on the improvement of water quality and living environments where wastewater treatment facilities are built, and on the improvement of water quality in natural bodies of water. The Center gives back to the community by nurturing talented human resources with advanced knowledge and skills.

[Research and Development Division] (Number of People)

Water Quality Assessment Division (8), Water Treatment Facility Assessment Division (8) 16 people in total

Regional Disaster Mitigation Research Center (Established in April 2015)

The major missions of the Center are the implementation of practical research programs and the development of human resources for disaster prevention and mitigation in cooperation with the Gifu Prefectural Government. The Center members will carry out research programs by taking the unique natural and social environment of each region into account. At the Center, government officials who have enough on-site experiences and the university professors with the most advanced knowledge of natural disasters and disaster prevention measures will cooperate to conduct research programs and implement their research findings for daily life. In addition, the Center will contribute to the community by comprehensively coping with a wide range of issues involving the safety and security of the citizens in Gifu, offering the research findings and providing information. Such issues include disasters caused by abnormal weather events, earthquakes, changes in environmental resources due to the degradation of ecosystems and biodiversity, and medical care during disasters.

[Research Division] (Number of People)

Division of Environmental Monitoring (9), Division of Technology Development for Disaster Mitigation (14), Division of Disaster Medicine (10), Division of Social Development for Disaster Mitigation (13) 46 people in total

Science Promotion Office

Science Promotion Office was established to facilitate cross-disciplinary research in the environmental and life science fields. It was set up after being reviewed in the Office of the President.

Environmental Science Research Division

The mission of the Environmental Science Research Division is to promote environmental science research, particularly the study of complex natural interactions and river basin environments affected by human activities. The Division promotes research of factors affecting water quality, water resources, biology, waste substances, energy, and natural disasters related to river basin environments, as well as research that views these factors as an integrated whole. The Division intends to incorporate the achievements of such research into the "Rearing Program for Basin Water Environmental Leaders," and cultivate skilled human resources that can help to solve river basin environmental issues in developing countries.

Life Science Research Division

The Life Science Research Division was established to promote integrated life science research, particularly in the field of microbiology. Gifu University aims to develop education and research in microbiology within the disciplines of medicine, engineering, applied biological sciences, and others. Microbiology is a study that already has deep roots in industry and society, and now research in other disciplines that incorporates microbiology is necessary if the University is to continue to be relevant to society at large. This Division develops integrated microbiology through commissioned research for the Ministry of Agriculture, Forestry and Fisheries, commissioned research for the Japan Chemical Industry Association, and through projects to make proposals to the ISO (International Organization for Standardization). The Division also aims to incorporate those processes and achievements into its educational activities.

Large-Scale Research Projects

In addition to the Project Research Center, Gifu University participates in large-scale research projects, and some have been selected as research and development programs by the Ministry of Education, Culture, Sports, Science and Technology.

Center of Innovation Science and Technology based Radical Innovation and Entrepreneurship Program (COI STREAM) supported by the Ministry of Education, Culture, Sports, Science and Technology

Year	Program	Responsible Body
Since 2013	Construction of Next-generation Infrastructure System Using Innovative Composite Materials: Enabling Society to Coexist with Earth for Centuries in Safety and Security	Kanazawa Institute of Technology, Gifu University, 2 other universities, and 11 institutions
<p>The goal is to use novel technologies to develop innovative composite materials that combine excellent environmental characteristics with high performance (light weight, long-term durability, self-repair, incombustibility, etc.), flexibility of design, simplicity of construction, and which are easy to relocate and recycle after construction.</p> <p>The aim is to develop practical applications for use of materials in next-generation infrastructure, materials which have a low social cost and can create new value.</p>		

World Premier International Research Center Initiative (WPI)

Year	Center	Responsible Body
Since 2007	Institute for Integrated Cell-Material Sciences (iCeMS)	Kyoto University, Faculty of Applied Biological Sciences (Gifu University)
<p>The Institute for Integrated Cell-Material Sciences (iCeMS) seeks to shed light on the chemical basis of cells, create compounds to control processes in cells such as stem cells (materials for cell control) in addition to setting off cellular processes to create chemical materials (cell-inspired materials), and to ultimately establish an integrated cell-material science.</p> <p>Gifu University is the satellite institution of the iCeMS.</p>		

Grants-in-Aid for Scientific Research

Grants-in-Aid for Scientific Research / Multi-year Fund

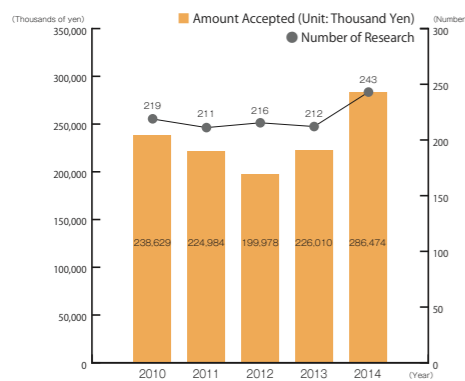
2014

Category	Number of Research	Direct Expenses (in thousands of yen)	Indirect Expenses (in thousands of yen)	Faculty / Organization																			
				Faculty of Education	Graduate School of Education	Faculty of Regional Studies	School of Medicine	Graduate School of Medicine	University Hospital	Faculty of Engineering	Graduate School of Engineering	Faculty of Applied Biological Sciences	United Graduate School of Agricultural Science	United Graduate School of Veterinary Sciences	United Graduate School of Drug Discovery and Medical Information Sciences	River Basin Research Center	Life Science Research Center	Information and Multimedia Center	International Student Center	Health Administration Center	Organization for Research and Community Development	Organization for Promotion of Higher Education and Student Support	
Scientific Research on Innovative Areas	17	60,580	17,940					4		11		2											
Scientific Research (S)	2	26,750	4,890	2																			
Scientific Research (A)	5	60,000	19,290			1				1		2			1								
Scientific Research (B)	41	146,935	44,670					7	1	9	1	17	1		1	2	1	1					
Scientific Research (C)	190	211,215	62,946	17	5	10	8	46	21	44	2	23	2		1	3	5	2				1	
Challenging Exploratory Research	43	44,485	12,690	3			4	10	2	3		15			1	3	1		1				
Young Scientists (A)	6	32,809	10,170							1	1	3				1							
Young Scientists (B)	81	76,990	23,544	7	1	5	4	16	10	20		12	1		1	1	3						
Research Activity Start-up	5	4,700	1,410	2				1	1												1		
Encouragement of Scientists	3	1,500	-							3													
Publication of Scientific Research Results (Scientific Literature)	1	900	-			1																	
JSPS Fellows (in Japan)	7	6,700	270										2	5									
JSPS Fellows (overseas)	2	1,900	-							1						1							
Total	403	675,465	197,820	31	6	17	16	84	38	90	4	74	6	5	3	10	8	6	3	1	0	1	

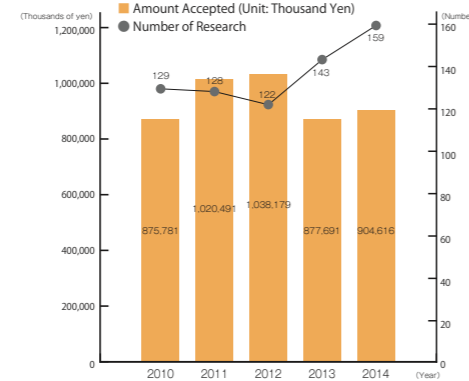
The expenses do not always coincide with the actual amount because fractions smaller than a thousand yen is rounded down. The "Number of Research" includes the research works carried over from the previous year.

Joint Research / Commissioned Research

Joint Research

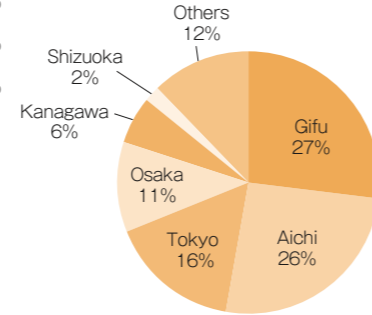


Commissioned Research

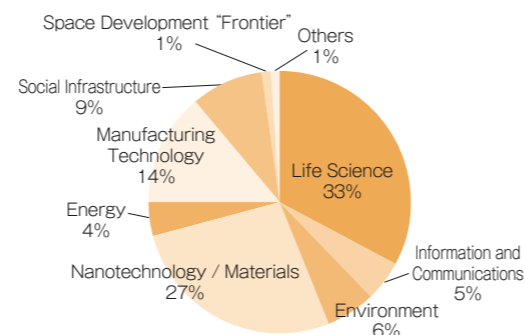


Joint Research

Locations of Joint Research Partner (2014)



Research Fields (2014)

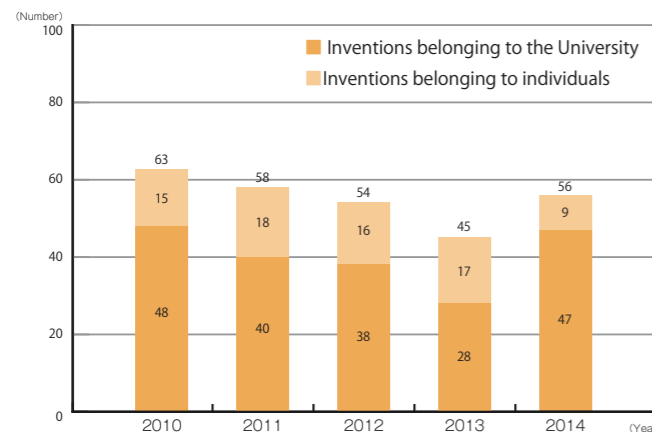


Joint Research / Commissioned Research (Unit: Thousand Yen) 2014

Faculty / Organization	Joint Research		Commissioned Research	
	Number Accepted	Amount Accepted	Number Accepted	Amount Accepted
Faculty of Education	3	12,978	0	0
Faculty of Regional Studies	2	745	0	0
Graduate School of Medicine / School of Medicine	17	34,209	25	280,720
University Hospital	11	14,668	51	15,193
Faculty of Engineering	153	167,571	44	370,890
Faculty of Applied Biological Sciences	43	40,148	20	118,965
United Graduate School of Agricultural Science	3	1,980	0	0
United Graduate School of Veterinary Sciences	0	0	2	14,000
United Graduate School of Drug Discovery and Medical Information Sciences	2	7,025	3	23,700
River Basin Research Center	1	0	6	21,381
Life Science Research Center	1	500	1	4,538
Information and Multimedia Center	3	4,650	1	2,203
Composite Materials Center	4	2,000	3	3,116
Organization for Research and Community Development	0	0	3	49,910
Total	243	286,474	159	904,616

In the case of a joint commission with multiple organizations, it counts towards the organization which has the greatest amount of research expenses (It can be zero in other participating organizations).

Number of Inventions for Patent



University-Community Collaboration

Agreements with local governments

With the purpose of contributing to community development and cultivating human resources, Gifu University actively promotes collaboration activities in a wide range of fields through the partnership and cooperation agreements with local governments.

Agreements for Partnership and Cooperation

Local Government/Institution	Date of Agreement	Collaboration Activity (2014)
Ogaki City	March 31, 2006	· Cooperation on a hands-on manufacturing workshop for elementary school students, their parents, and senior high school students. · Cooperation for management of the Center for Advanced Die Engineering and Technology
Kakamigahara City Kakamigahara Chamber of Commerce & Industry	October 10, 2007	· Supervising and instructing at Kakamino Science Laboratory
Hashima City	February 26, 2008	· Dispatching doctors to Hashima City Hospital and accepting trainees · Research studies for discovering resources in Hashima City, and revitalization measures
Gifu Prefecture	March 28, 2008	· Staff Exchange (Gifu University faculty members serve as supervisors for lifelong learning and social education policy in the prefectural government) · Holding the Gifu Prefecture and Gifu University Collaboration Promotion Conference · Accepting Gifu Prefecture officials for the Community Coordinator Training Program conducted by the Center for Collaborative Study with Community
Seki City	September 16, 2008	· Support for securing medical deliveries in remote areas
Mino City	December 17, 2008	· Collaboration for the production and sale of the Gifu University-brand vegetable "Senjusai"
Gifu City	February 27, 2009	· Accepting Gifu City officials for the Community Coordinator Training Program conducted by the Center for Collaborative Study with Community · Holding exchange meetings for industry-government-academia collaborations
Takayama City	April 17, 2009	· Accepting Takayama City officials for the Community Coordinator Training Program conducted by the Center for Collaborative Study with Community · Visiting Lecture "The Gaku" (learning) by Gifu University faculty members
Mitake Town	October 28, 2009	· Cooperation for the development towards a low-carbon society (utilizing photovoltaic generation, etc.)
Gujo City	March 19, 2012	· Accepting Gujo City officials for the Community Coordinator Training Program conducted by the Center for Collaborative Study with Community

In addition to the activities above, many of Gifu University faculty members cooperate actively as members of various chambers/committees and training instructors.

Other Major Agreements

Local Government/Institution	Date of Agreement	Collaboration Activity
Gifu Prefecture	March 12, 2004	Mutual cooperation with Gifu Prefectural Library
	November 24, 2011	Support and cooperation from universities and higher educational institutions during disasters
	March 20, 2014	Collaboration for education of livestock hygiene and epidemic prevention
Gifu City	March 28, 2006	Collaboration with Gifu Pharmaceutical University
	October 9, 2008	Opening facilities to the public during disasters
Inter-University Research Institute Corporation National Institute for Fusion Science, National Institutes of Natural Sciences	March 25, 2008	Cooperation on research and cultivation of human resources
Tajimi City	February 4, 2010	Industry-government-academia collaboration
Chubu Regional Development Bureau Ministry of Land, Infrastructure, Transport and Tourism	May 29, 2012	Collaboration in the community, such as the improvement of disaster-preventive functions
Hospitals affiliated with Gifu University Hospital	December 3, 2012	Mutual support during disasters

Promotion of collaboration projects with the community

Gifu University promotes collaboration projects with the community through "Gifu University Development Fund (for University-Community Collaborations)" established in 2007 for the purpose of contributing to community development.

- Gifu University Development Fund (for University-Community Collaborations) in 2015: 6 projects

Extension Course / Symposium / Forum

Extension Course

The faculties and centers of Gifu University have opened various extension courses with the aim of contributing to the advancement of education and culture in the region while sharing its achievements in education and research with the community. In the extension courses for students in elementary school, junior and senior high school, Gifu University also provides hands-on workshop for monozukuri (making things, manufacturing). The extension courses available for 2015 are as follows (as of May 2015):

- Lifelong Learning Course for Working People 4 courses
- Specialized Course for Professionals and Teachers 1 courses
- Extension Course/Hands-on Workshop for Students in Elementary School, Junior and Senior High Schools 18 courses

Gifu Symposium

Gifu University has held the Gifu Symposium twice a year since 2001. The aims of the symposium are to introduce the achievements of research at Gifu University, and to provide the latest information about key themes for the 21st century on community and global matters, such as the environment, biotechnology, information, and education as the center of the community.

- In 2014 The 28th Symposium: Approach to Recycling of Water -Source of Life, Water Environments in the Future-
- The 29th Symposium: How Microbiology Supports 'Cool Japan'?

Gifu University Forums

Gifu University regularly holds lectures delivered by top researchers who have made great contributions to the development of each academic field.

- In 2014 The 40th Forum: "Present State and Scope of Academic Research Organization"
- The 41th Forum: "Land Use and Development Plan of Gifu Prefecture"
- The 42th Forum: Environmental University Forum "Insects and Environment: Learning about Nature through Insects"
- The 43th Forum: "Diversity Promotion in the Age of Globalization - based on Gender Equality"
- The 44th Forum "The Role of Industry-Government-Academia Cooperation for Local Revitalization"

City College Program

Gifu University City College Program

Gifu University implements Gifu University City College Program at the Gifu Chunichi Culture Center. It is a joint program with the Chunichi Shimbun Co., Ltd. Faculty members of Gifu University deliver lectures on themes related to society and life.

Courses for 2014

- Authors Awarded the Nobel Prize in Literature and Their Outstanding Contributions to Japanese Literature (by Professor Masako Hayashi, Faculty of Regional Studies)
- Relation between Lifestyle and Alzheimer's (by Professor Kazutoshi Kiuchi, Faculty of Engineering)
- Learn about Dementia and Community Support (by Professor Miki Matsunami, School of Medicine)
- High-Functioning Autism: Understanding and Support for Children with Asperger's Syndrome (by Professor Satoshi Beppu, Faculty of Education)
- Know more about our Intestines (by Associate Professor Hayato Matsuyama, Faculty of Applied Biological Sciences)

Senior High School-University Collaboration

Gifu University collaborates with local senior high schools and encourages senior high school students to develop a deep understanding of a wide range of research fields. Gifu University promotes activities for mutual understanding between senior high schools and Gifu University regarding current education through projects aiming to motivate students to learn, along with the exchange of opinions with senior high school officials.

[Achievements in 2014]

- Visiting Lectures in Senior High Schools 124 courses
- (Courses for 2015 are a total of 242 including 19 Humanities Courses, 19 Social Science Courses, 36 Science Courses, 112 Applied Biological Sciences Courses, 38 Medical and Welfare Courses, and 18 Comprehensive Courses.)

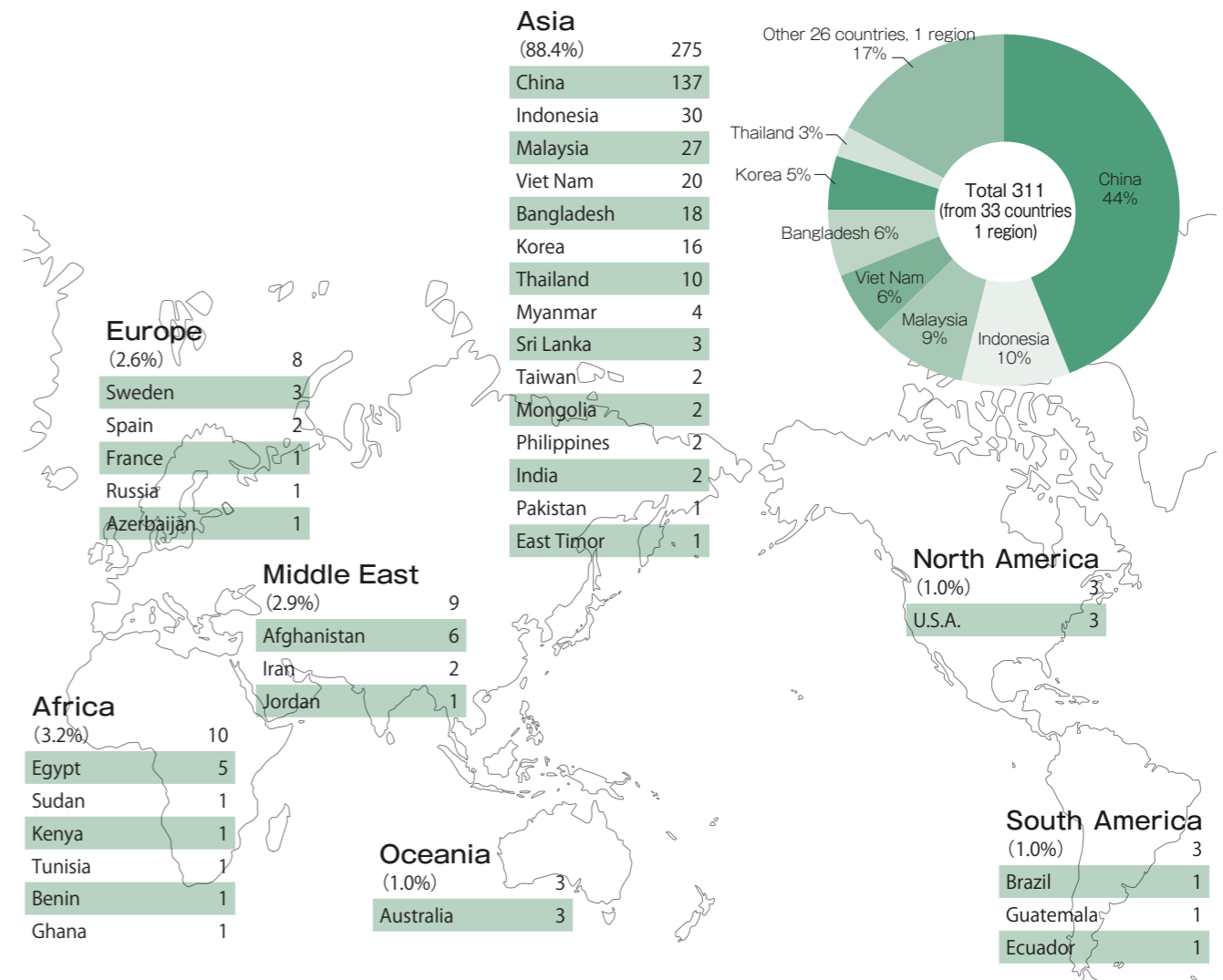
- Gifu Network University Consortium (Senior High School-University Collaboration, Information Exchange Meeting)
- Gifu Prefecture University Guidance Seminar (on August 4, 2014)
- Seminar for Senior High School-University Collaboration (on November 26, 2014)

International Relations

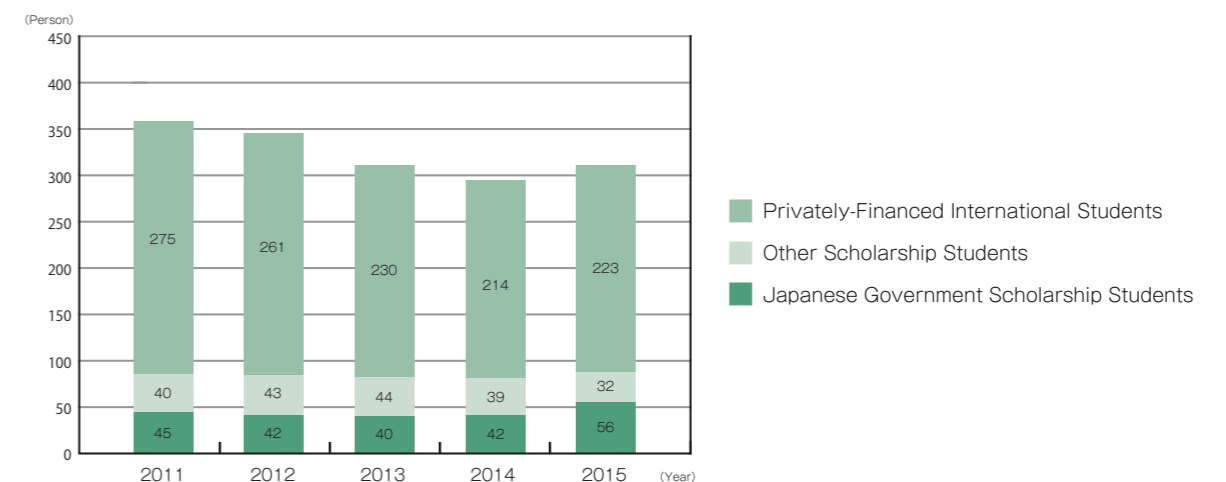
Statistical Data on International Students

Number of International Students

As of May 1, 2015



Number of International Students By Funding Source



Number of Exchange Students

Country	University	Sent			Accepted		
		2012	2013	2014	2012	2013	2014
China	Guangxi University					1	1
	University of Electronic Science and Technology of China				1	2	1
	Jilin University				1		
	Huaqiao University				3	1	1
	Inner Mongolia University				1	1	1
	Jiangnan University				2	1	
Korea	Seoul National University of Science and Technology			1	2	2	1
	Mokpo National University	1	1		3	1	2
	Korea University	1					
Thailand	Kasetsart University				1	1	2
	Chiang Mai University				2		
Australia	University of Technology, Sydney	2	3	1	3	2	2
	The University of Sydney						1
Sweden	Lund University	2		2	2	2	2
Germany	The University of Erfurt	1	1	1		1	
	The University of Bayreuth						1
U.S.A	San Diego State University		1		1	1	2
	Northern Kentucky University		2		2		2
	The University of Utah					2	
	West Virginia University			2			
Total		7	8	7	24	19	18

Summer School Program

Country	University	Sent			Accepted		
		2012	2013	2014	2012	2013	2014
Korea	Seoul National University of Science and Technology	3	5	3		1	
	Mokpo National University	4	1		3	3	4
Australia	Griffith University	12	11	20			
Sweden	Lund University				14	17	17
Total		19	17	23	17	21	21

International Academic Exchange

University Level Exchange-45 Universities and 1 Government Agency

As of May 1, 2015

University / Government Agency	Country	Concluded	University / Government Agency	Country	Concluded
University of Campinas	Brazil	1984. 8.27	Jilin University	China	2003. 5.20
San Diego State University	U.S.A	1985. 5. 7	Chiang Mai University	Thailand	2003. 8. 4
Zhejiang University	China	1986. 4.21	University of Dhaka	Bangladesh	2004. 6.17
Guangxi University	China	1986. 4.24	King Mongkut's University of Technology Thonburi	Thailand	2005. 1.10
University of Electronic Science and Technology of China	China	1986. 7.21	Huaqiao University	China	2005. 3.29
Jiangnan University	China	1986. 9. 3	Tongji University	China	2006. 3.16
China Medical University	China	1987. 8.15	The University of Lampung	Indonesia	2006. 4.25
Lund University	Sweden	1987. 9.12	The Portland State University	U.S.A	2006. 6.19
Northern Kentucky University	U.S.A	1990. 9.26	Inner Mongolia University	China	2007. 2. 6
Seoul National University of Science and Technology	Korea	1992. 3.19	Mokpo National University	Korea	2008. 2.26
Griffith University	Australia	1995. 3. 3	Shivaji University	India	2008. 3.18
The University of Utah	U.S.A	1997. 5.28	The University of Bayreuth	Germany	2008. 8.22
Utah State University	U.S.A	1997. 5.29	Southwest Jiaotong University	China	2008. 9. 5
Hanoi University of Science and Technology	Vietnam	1998. 6.26	Benha University	Egypt	2009. 3.18
West Virginia University	U.S.A	1998.12.16	Korea University	Korea	2010. 1.15
Kasetsart University	Thailand	1999. 8. 5	Kaunas University of Technology	Lithuania	2010. 3. 8
Inner Mongolia Agricultural University	China	2000. 8. 8	Bogor Agricultural University	Indonesia	2010.12. 2
University of Technology, Sydney	Australia	2000. 8.14	Inner Mongolia Normal University	China	2011. 6. 8
University of Pannonia	Hungary	2001. 3. 2	Vytautas Magnus University	Lithuania	2012. 1. 19
Andalas University	Indonesia	2001. 4.23	Gadjah Mada University	Indonesia	2012. 9. 13
Bangladesh Agricultural University	Bangladesh	2001. 8.23	The University of Sydney	Australia	2012.12. 5
The University of Erfurt	Germany	2002.12. 4	Sebelas Maret University	Indonesia	2013. 7. 8
			Paris-Sud University	France	2014.12.16
			Office of the Basic Education Commission, Ministry of Education	Thailand	2015. 3.10

Faculty Level Exchange-37 Institutions

As of May 1, 2015

Institution	Country	Concluded	Faculty
Chulalongkorn University, Faculty of Science	Thailand	1994. 3.15	Faculty of Applied Biological Sciences
Khon Kaen University, Faculty of Agriculture	Thailand	2000. 3.27	Faculty of Applied Biological Sciences
Khon Kaen University, Research and Development Institute	Thailand	2000. 3.27	Faculty of Applied Biological Sciences
Zhejiang University, School of Medicine	China	2000.12. 4	School of Medicine
Khon Kaen University, Faculty of Medicine	Thailand	2000.12.18	School of Medicine
Chonnam National University, College of Engineering	Korea	2002. 2. 6	Faculty of Engineering
Chinese Academy of Sciences, Institute of Soil and Water Conservation	China	2008. 8. 12	Center for Infrastructure Asset Management Technology and Research
National Veterinary Research & Quarantine Service, National Veterinary Research Institute	Korea	2008.11. 4	Faculty of Applied Biological Sciences
Chungbuk National University, School of Medicine	Korea	2009. 4. 17	Graduate School of Medicine/School of Medicine
China Institute of Water Resources and Hydropower Research, Department of Geotechnical Engineering	China	2009. 7.24	Center for Infrastructure Asset Management Technology and Research
Kafr El-Sheikh University, Faculty of Veterinary Medicine	Egypt	2009.11.15	United Graduate School of Drug Discovery and Medical Information Sciences
Yuhan College, Engineering Division	Korea	2010. 9.29	Faculty of Engineering
University of Glasgow, Faculty of Medicine	U.K	2011. 4.20	School of Medicine
University of Alberta, Faculty of Science	Canada	2011. 6.30	Faculty of Applied Biological Sciences
University of Bengkulu, Faculty of Mathematics and Natural Sciences	Indonesia	2011. 7.20	Faculty of Engineering
Indian Institute of Technology Guwahati, Biotechnology Dept. and Nanotechnology Center	India	2012. 7.19	United Graduate School of Agricultural Science
Assam University, School of Life Science	India	2012. 7.19	United Graduate School of Agricultural Science
Shikshan Prasarak Mandal's Sir Parashurambhau College	India	2012. 9.17	Faculty of Engineering
National University of Mongolia, School of Geography and Geology	Mongolia	2012.10.29	Faculty of Applied Biological Sciences
Chulalongkorn University, Faculty of Sciences	Thailand	2012.12. 6	United Graduate School of Agricultural Science
Chungnam National University, College of Engineering	Korea	2013. 1.18	Faculty of Engineering
Carlos III University of Madrid, School of Engineering	Spain	2013. 7. 9	Faculty of Engineering
The National University of Malaysia, Faculty of Science and Technology	Malaysia	2014. 1.22	Faculty of Engineering
Pole EMC2,IRT Jules Verne	France	2014. 3.13	Composite Materials Center
Indian Institute of Technology Guwahati	India	2014. 4.17	Faculty of Engineering
Technische Universität Dortmund, Faculty of Mechanical Engineering	Germany	2014. 6.23	Faculty of Engineering
University of Mandalay, Science Departments	Myanmar	2014. 8.25	Faculty of Engineering
Brawijaya University, Faculty of Mathematics and Natural Sciences	Indonesia	2014.12.16	Faculty of Engineering
Yadanabon University, Science Departments	Myanmar	2014.12.16	Faculty of Engineering
Meiktila University, Science Departments	Myanmar	2014.12.16	Faculty of Engineering
Dedan Kimathi University of Technology, School of Engineering	Kenya	2014.12.16	Faculty of Engineering
Universiti Tunku Abdul Rahman, Faculty of Engineering and Science	Malaysia	2014.12.16	Faculty of Engineering
Hame University of Applied Sciences, Bioeconomy Unit	Finland	2015. 1.22	Faculty of Applied Biological Sciences
Kyungpook National University, College of Engineering	Korea	2015. 2.27	Faculty of Engineering
Srinakharinwirot University, Faculty of Education	Thailand	2015. 3.17	Faculty of Education
National Institute of Health, Lung and Blood Institute	U.S.A	2015. 3.18	Faculty of Engineering
Centre for Solar Energy Hydrogen Research Baden-Württemberg	Germany	2015. 3.20	Faculty of Engineering

Researchers Accepted / Sent

Number of Foreign Researchers and Visitors Accepted

2014

Foreign Researchers	54
Foreign Visitors	200

Number of Gifu University Faculty's Overseas Travels

2014

Business Trip	628
Training	29

* excluding part-time staff

International House

Name	Room Type		
	Rooms	Others	
International House (1-1 Yanagido, Gifu City)	Building A	31 Single Rooms	Conference Rooms, Lounge
		2 Couple Rooms	
		3 Family Rooms	
	Building B	38 Single Rooms	Multipurpose Room, Japanese Room
		12 Couple Rooms	
		4 Family Rooms	
		4 Family Rooms	
	Building C	11 Single Rooms	
		2 Couple Rooms	
		4 Family Rooms	

Overseas Office

Gifu University has established overseas offices aiming to promote exchange with international students and researchers.

Gifu University Shanghai Office

1043 Yuqing Road, Shanghai 201315, People's Republic of China
Tel: 86-21-58124777
Fax: 86-21-58124778

Gifu University Dhaka Office

University of Dhaka, Ramna, Dhaka 1000, Bangladesh

Gifu University Office in Sebelas Maret University

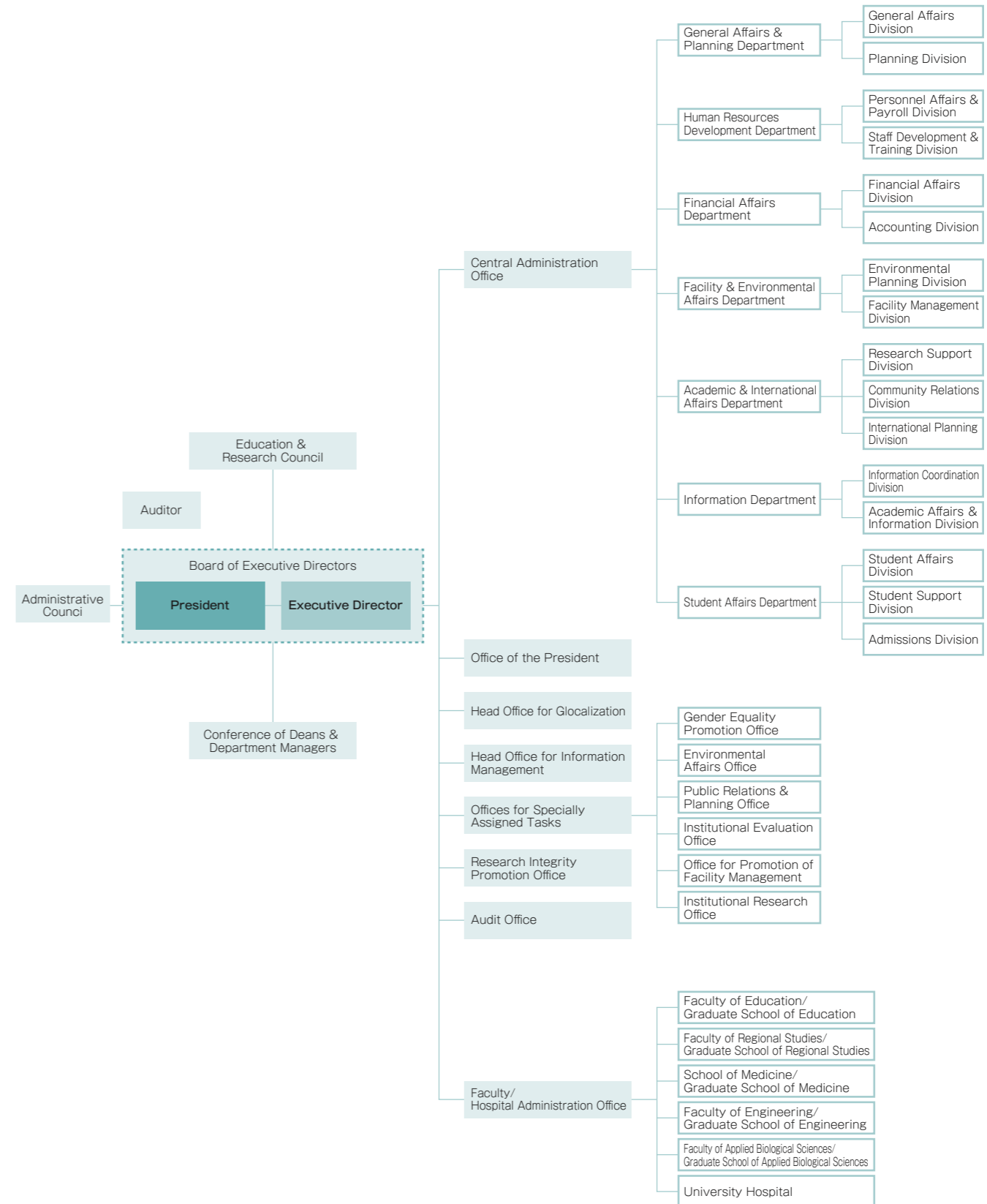
Sebelas Maret University, Jalan Ir. Sutami 36 A,
Surakarta, 57126, Indonesia

Program Office between Gifu University and Guangxi University

100 Daxue Road, Nanning, Guangxi, People's Republic of China

Organization

Administrative Organization



Board Members

Members of the Board	
President	MORIWAKI, Hisataka
Executive Director for Planning, Evaluation & Fund, Vice President	SUGITO, Masata
Executive Director for Academic & Affiliated School Affairs, Vice President	EMA, Satoshi
Executive Director for Academic Research & Information, Vice President	FUKUSHI, Hideto
Executive Director for International Affairs & Public Relations, Vice President	SUZUKI, Fumiaki
Executive Director for General Affairs & Finance, Vice President	YOKOYAMA, Masaki
Auditor	YOSHIDA, Takaharu
Auditor	YAMADA, Hideharu
Vice President, Director of the University Hospital	OGURA, Shinji
Vice President for the Promotion of Gender Equality & Diversity	HAYASHI, Masako
Vice President for Industry-Government-Academia Collaboration	WANG, Zhigang
Members of Administrative Council	
President	MORIWAKI, Hisataka
Executive Director for Planning, Evaluation & Fund, Vice President	SUGITO, Masata
Executive Director for Academic & Affiliated School Affairs, Vice President	EMA, Satoshi
Executive Director for Academic Research & Information, Vice President	FUKUSHI, Hideto
Executive Director for International Affairs & Public Relations, Vice President	SUZUKI, Fumiaki
Executive Director for General Affairs & Finance, Vice President	YOKOYAMA, Masaki
Vice President, Director of the University Hospital	OGURA, Shinji
Vice President for the Promotion of Gender Equality & Diversity	HAYASHI, Masako
Vice President for Industry-Government-Academia Collaboration	WANG, Zhigang
Director & Proprietress of Juhachiro	ITO, Tomoko
President of Gifu Pharmaceutical University	INAGAKI, Takashi
President of Gifu Shimbun	USUI, Hiroshi
Chairman of OKAMOTO Co., Ltd.	OKAMOTO, Taemon
CEO & President of Pacific Industrial Co., Ltd.	OGAWA, Shinya
Advisor to National Museum of Nature & Science	SASAKI, Masamine
Vice-Governor of Gifu Prefecture	FUJINO, Takumi
Mayor of Gifu City	HOSOE, Shigemitsu
President of The Juroku Bank, Ltd.	MURASE, Yukio
Director of Gifu Station, Japan Broadcasting Corporation	YAMAUCHI, Takeatsu

Members of Education & Research Council	
President	MORIWAKI, Hisataka
Executive Director for Planning, Evaluation & Fund, Vice President	SUGITO, Masata
Executive Director for Academic & Affiliated School Affairs, Vice President	EMA, Satoshi
Executive Director for Academic Research & Information, Vice President	FUKUSHI, Hideto
Executive Director for International Affairs & Public Relations, Vice President	SUZUKI, Fumiaki
Executive Director for General Affairs & Finance, Vice President	YOKOYAMA, Masaki
Vice President, Director of the University Hospital	OGURA, Shinji
Vice President for the Promotion of Gender Equality & Diversity	HAYASHI, Masako
Vice President for Industry-Government-Academia Collaboration	WANG, Zhigang
Dean of the Faculty of Education	IKETANI, Naotake
Dean of the Faculty of Regional Studies	TAKEUCHI, Akiro
Dean of the Graduate School of Medicine	SEISHIMA, Mitsuru
Dean of the Faculty of Engineering	ROKUGO, Keitetsu
Dean of the Faculty of Applied Biological Sciences	FUKUI, Hirokazu
Dean of the United Graduate School of Agricultural Science	SENGE, Masateru
Dean of the United Graduate School of Veterinary Sciences	ISHIGURO, Naotaka
Dean of the United Graduate School of Drug Discovery & Medical Information Sciences	NIWA, Masayuki
Director of the Center for Collaborative Study with Community	MASUKAWA, Koichi
Director of the River Basin Research Center	KAGEYAMA, Koji
Director of the Life Science Research Center	SHIMOZAWA, Nobuyuki
Director of the Information & Multimedia Center	Uchida, Yuichi
Director of the International Student Center	TAKEUCHI, Toyohide
Director of Health Administration Center	YAMAMOTO, Mayumi
Professor of the Faculty of Education	YOSHIMATSU, Mitsuhiro
Professor of the Faculty of Regional Studies	WASADA, Hiroaki
Professor of the Graduate School of Medicine	MINATOOGUCHI, Shinya
Professor of the Faculty of Engineering	NONOMURA, Shuichi
Professor of the Faculty of Applied Biological Sciences	YAMAUCHI, Ryo
Professor of the Organization for Promotion of Higher Education & Student Support	SHIMIZU, Yasutake
Professor of the Organization for Research & Community Development	OYA, Yutaka

Deans & Directors		
Faculty of Education	Dean	IKETANI, Naotake
	Associate Dean	MATSUNAGA, Yosuke
	Associate Dean	YOSHIMATSU, Mitsuhiro
	Associate Dean	IMAI, Hajime
	Director of the Special Needs Education Center	MURASE, Shinobu
	Principal of the Faculty-Affiliated Elementary School	HARADA, Kenichi
	Vice Principal of the Faculty-Affiliated Elementary School	MATSUI, Toru
	Principal of the Faculty-Affiliated Junior High School	HARADA, Kenichi
	Vice Principal of the Faculty-Affiliated Junior High School	MIZUTANI, Kei
	Faculty of Regional Studies	Dean
Associate Dean		WASADA, Hiroaki
Associate Dean		TOKI, Kunihiko
Graduate School of Medicine / School of Medicine	Dean	SEISHIMA, Mitsuru
	Associate Dean	MINATOOGUCHI, Shinya
	Associate Dean	HARA, Akira
	Associate Dean	OKUMURA, Futoshi
University Hospital	Director of the Center for Regional Medicine	MURAKAMI, Nobuo
	Director	OGURA, Shinji
	Associate Director	IIDA, Hiroki
	Associate Director	MURAKAMI, Nobuo
	Associate Director	MIZUTA, Keisuke
Faculty of Engineering	Associate Director	HIROSE, Yasuko
	Dean	ROKUGO, Keitetsu
	Associate Dean	NONOMURA, Shuichi
	Associate Dean	KOKETSU, Mamoru
	Associate Dean	IMAO, Shigeki
	Director of the Center for Infrastructure Asset Management Technology and Research	SAWADA, Kazuhide
	Director of the Supporting and Development Center for Technology Education	IMAO, Shigeki

Faculty of Applied Biological Sciences	Dean	FUKUI, Hirokazu
	Associate Dean	YAMAUCHI, Ryo
	Associate Dean	SUGIYAMA, Makoto
	Associate Dean	MUKAI, Yuzuru
	Director of the Gifu Field Science Center	TANAKA, Itsuo
	Director of the Animal Medical Center	MAEDA, Sadatoshi
	Director of the Research Center for Wildlife Management	SUZUKI, Masatsugu
	Director of the Comparative Cancer Center	MARUO, Koji
	Director of the Center for the Development & Promotion of Joint Veterinary Education	SUGIYAMA, Makoto
	Education and Research Center for Food Animal Health	KITAGAWA, Hitoshi
United Graduate School of Agricultural Science	Dean	SENGE, Masateru
United Graduate School of Veterinary Sciences	Dean	ISHIGURO, Naotaka
United Graduate School of Drug Discovery & Medical Information Sciences	Dean	NIWA, Masayuki
Library	Director of the University Library	FUKUSHI, Hideto
	Director of the Medical Library	YAMAMOTO, Tetsuya
Head Office for Globalization	Director	SUZUKI, Fumiaki
Head Office for Information Management	Director	FUKUSHI, Hideto
Center for Collaborative Study with Community	Director	MASUKAWA, Koichi
River Basin Research Center	Director	KAGEYAMA, Koji
Life Science Research Center	Director	SHIMOZAWA, Nobuyuki
Information & Multimedia Center	Director	UCHIDA, Yuichi
International Student Center	Director	TAKEUCHI, Toyohide
Health Administration Center	Director	YAMAMOTO, Mayumi
Medical Education Development Center	Director	FUJISAKI, Kazuhiko
Organization for Promotion of Higher Education and Student Support	Director-General	EMA, Satoshi
Organization for Research and Community Development	Director-General	FUKUSHI, Hideto

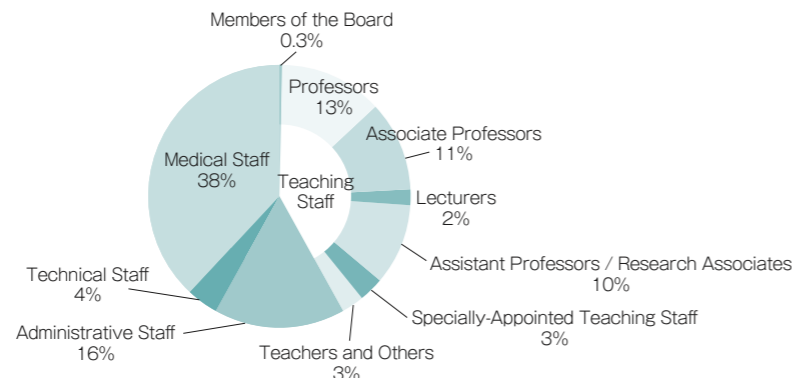
Number of Teaching and General Staff

As of May 1, 2015

Classification	Members of the Board	Teaching Staff							General Staff			Total	
		Professors	Associate Professors	Lecturers	Assistant Professors	Research Associates	Specialty-Appointed Teaching Staff	Affiliated School Teachers	Administrative Staff	Technical Staff	Medical Staff		
President	1											1	
Executive Director	5											5	
Auditor	1	1										1	
Central Administration Office									153 (58)	35 (4)		188 (62)	
Faculty of Education		42 (7)	30 (6)		9 (2)		1		17 (10)	1		100 (25)	
Graduate School of Education		5 (1)	6 (1)				2					13 (2)	
Affiliated Elementary School, Faculty of Education										29 (11)		29 (11)	
Affiliated Junior High School, Faculty of Education										27 (8)		27 (8)	
Faculty of Regional Studies		23 (4)	15 (3)	2	7 (3)				8 (4)			55 (14)	
School of Medicine		12 (6)	9 (7)		18 (16)	1 (1)			27 (10)			67 (40)	
Graduate School of Medicine		41 (2)	29 (2)	9 (1)	36 (7)		20 (4)			4 (2)		139 (18)	
Medical Education Development Center		3	1		2 (1)							6 (1)	
University Hospital			17	26 (4)	76 (11)				69 (24)	5 (2)	767 (631)	960 (672)	
Faculty of Engineering		72 (3)	63 (4)		31 (2)		4 (2)		26 (8)	11		207 (19)	
Faculty of Applied Biological Sciences		45	41 (4)		12 (7)		3		21 (7)	24 (10)		146 (28)	
United Graduate School of Agricultural Science		1										1	
United Graduate School of Veterinary Sciences		1										1	
United Graduate School of Drug Discovery and Medical Information Sciences		2										2	
Center for Collaborative Study with Community		1					2 (1)					3 (1)	
River Basin Research Center		6	6 (2)		3	1	1					17 (2)	
Life Science Research Center		3 (1)	2		6		1 (1)					12 (2)	
Information and Multimedia Center		6	4 (1)		2 (1)							12 (2)	
International Student Center		2 (1)	3 (2)									5 (3)	
Health Administration Center		1 (1)	1		2 (1)						3 (3)	7 (5)	
Organization for Promotion of Higher Education and Student Support			2				10 (2)					12 (2)	
Organization for Research and Community Development		1	1 (1)				8 (1)					10 (2)	
Gender Equality Promotion Office							1 (1)					1 (1)	
Total	7	1	267 (26)	230 (33)	37 (5)	204 (51)	2 (1)	53 (12)	56 (19)	321 (121)	80 (18)	770 (634)	2027 (920)

() indicates the number of women and is separately calculated. The number of part-time board members is shown in blue (not included in the total). The number of Specialty-Appointed Teaching Staff shown in the table represents the full-time positions only.

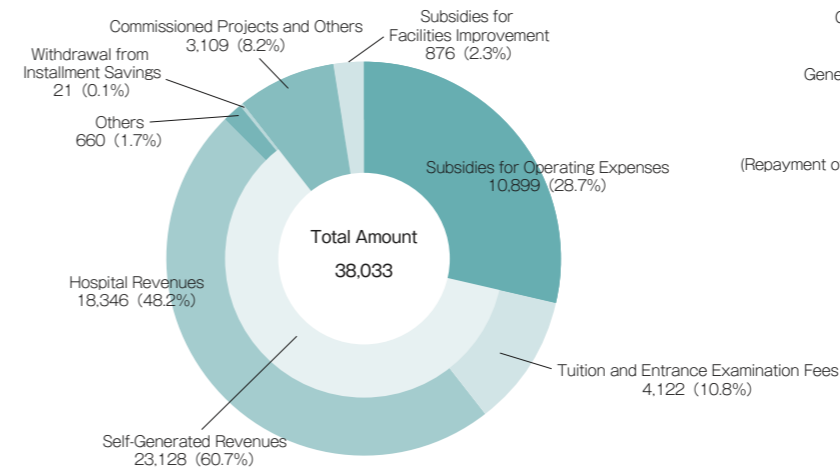
Component Ratio of Teaching and General Staff



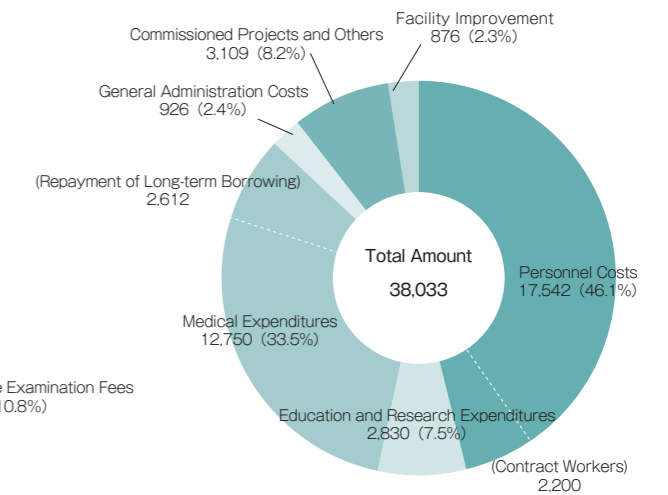
Budget

Gifu University Budget for 2015 (Unit: Million Yen)

[Revenues]



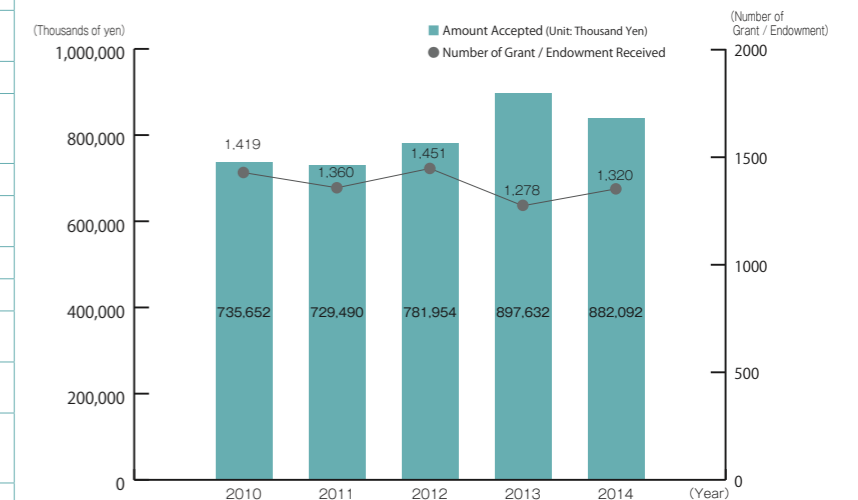
[Expenditures]



Endowment

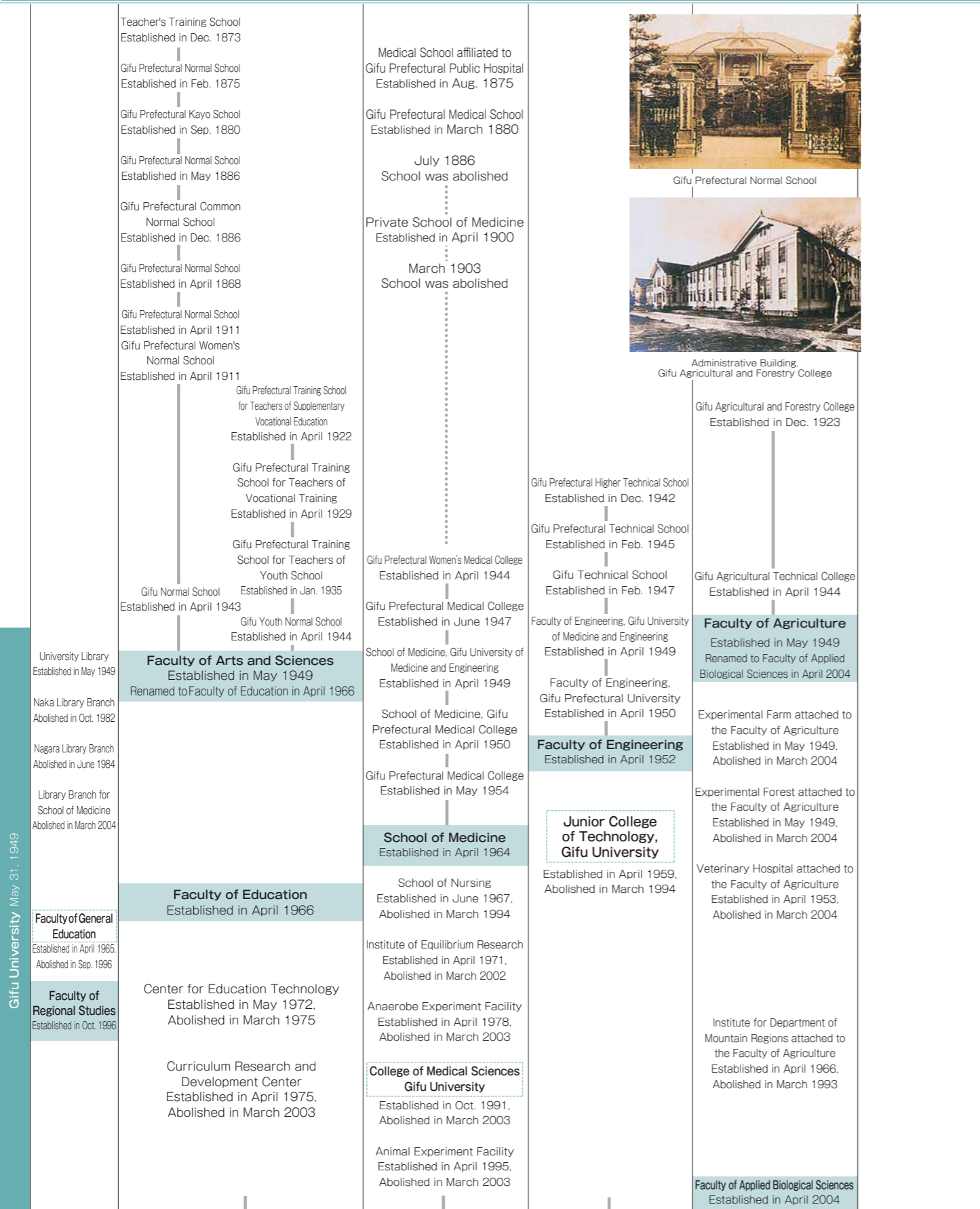
2014 Grant and Endowment (Unit: Thousand Yen)

Classification	Number of Grant / Endowment Received	Amount
Central Administration Office (including international exchange)	4	299
Gifu University Fund	359	23,074
Human Resources Development Department	1	100
Faculty of Education	23	11,299
Affiliated Elementary and Junior High Schools, Faculty of Education	4	23,150
Faculty of Regional Studies	4	976
Graduate School of Medicine / School of Medicine	370	504,329
University Hospital	129	87,184
Faculty of Engineering	149	95,026
Faculty of Applied Biological Sciences	236	70,698
United Graduate School of Agricultural Science	6	5,570
United Graduate School of Drug Discovery and Medical Information Sciences	4	6,600
River Basin Research Center	15	26,900
Life Science Research Center	6	21,783
Information and Multimedia Center	7	4,400
Organization for Research and Community Development	3	700
Total	1,320	882,092

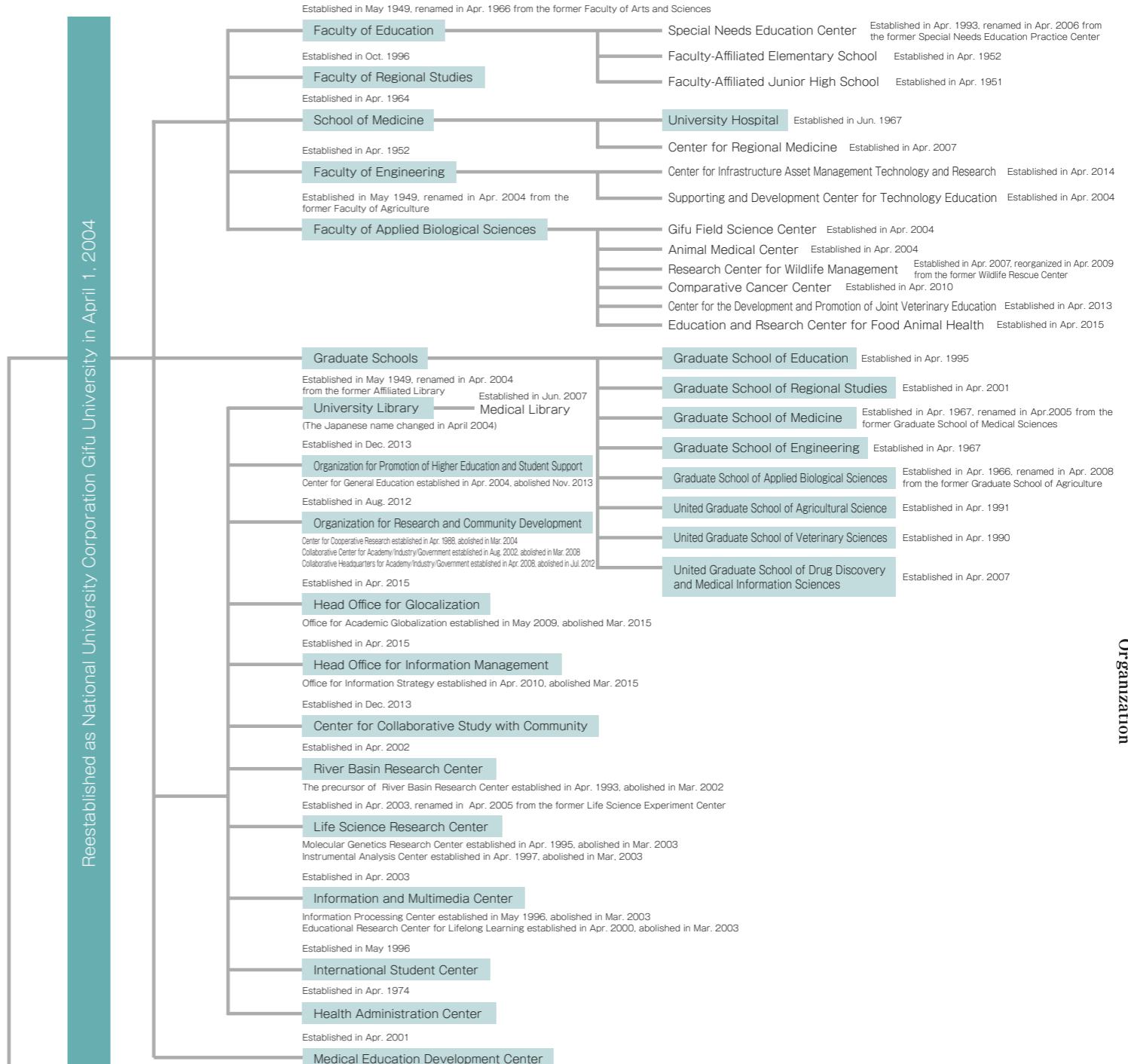


Fractions smaller than a thousand yen rounded down. It includes ¥220 million for the Departments of Integral Medicine in the School of Medicine, ¥20 million for the endowed research division in the Faculty of Applied Biological Sciences, and ¥20 million for the endowed research division in the Life Science Research Center.

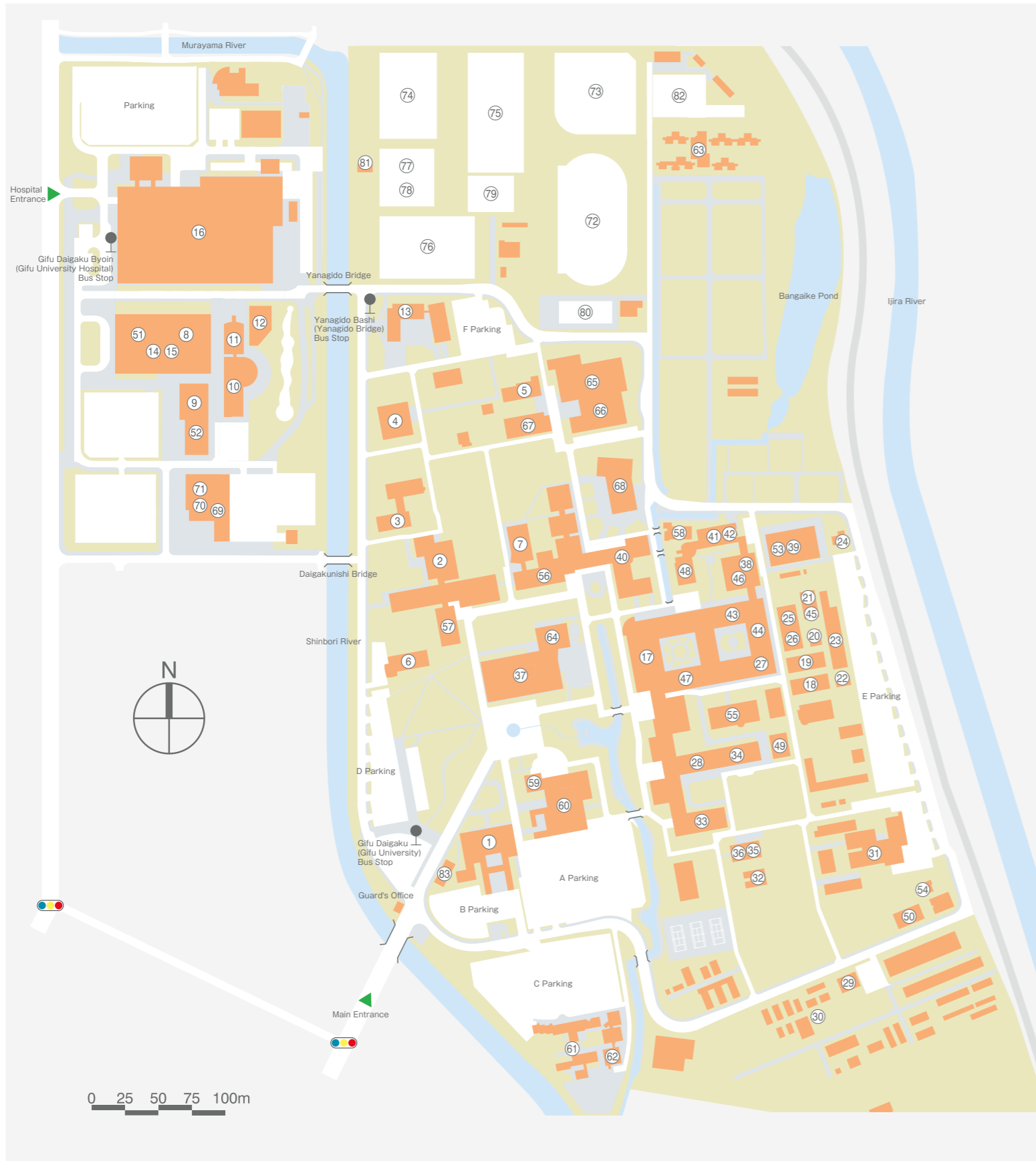
History



President	Name	Start	End
1 st President	AOKI, Bunichiro	May 31, 1949	July 1, 1954
Acting President	TAKAHASHI, Teizo	July 1, 1954	May 31, 1955
2 nd President	YOSHII, Yoshiji	June 1, 1955	May 31, 1961
3 rd President	SHIKATA, Hiroshi	June 1, 1961	May 31, 1967
4 th President	IMANISHI, Kinji	June 1, 1967	May 31, 1973
5 th President	HAYASHI, Kaneo	June 1, 1973	May 31, 1977
6 th President	TACHI, Masatomo	June 1, 1977	May 31, 1983
7 th President	HAYANO, Saburo	June 1, 1983	May 31, 1989
8 th President	KATO, Akira	June 1, 1989	May 31, 1995
9 th President	KINJO, Toshio	June 1, 1995	May 31, 2001
10 th President	KUROKI, Toshio	June 1, 2001	March 31, 2008
11 th President	MORI, Hideki	April 1, 2008	March 31, 2014
12 th President	MORIWAKI, Hisataka	April 1, 2014	Present



Campus Map



- ① Central Administration Office
- ② Faculty of Education
- ③ Art and Technology Education Building
- ④ Music Building
- ⑤ Health and Physical Education Building
- ⑥ Special Needs Education Center
- ⑦ Faculty of Regional Studies
- ⑧ Graduate School of Medicine & School of Medicine
- ⑨ Life Science Building
- ⑩ Education and Supporting Services Building
- ⑪ Memorial Hall
- ⑫ Medical Library
- ⑬ School of Medicine (Nursing Course)
- ⑭ Medical Education Development Center
- ⑮ Center for Regional Medicine
- ⑯ University Hospital
- ⑰ Faculty of Engineering
- ⑱ Mechanics Building No.1
- ⑲ Mechanics Building No.2
- ⑳ Mechanics Building No.3
- ㉑ Chemistry Building
- ㉒ Disaster Prevention Engineering Building
- ㉓ Civil Engineering Experiments Building
- ㉔ High Voltage Experiments Building
- ㉕ Mechanics Workshop Facilities
- ㉖ Supporting and Development Center for Technology Education
- ㉗ Center for Infrastructure Asset Management Technology and Research
- ㉘ Faculty of Applied Biological Sciences
- ㉙ Administrative Building , Gifu Field Science Center
- ㉚ Gifu Field Science Center
- ㉛ Animal Medical Center
- ㉜ Research Center for Wildlife Management
- ㉝ Comparative Cancer Center
- ㉞ Center for the Development and Promotion of Joint Veterinary Education
- ㉟ United Graduate School of Agricultural Science
- ㊱ United Graduate School of Veterinary Sciences
- ㊲ University Library
- ㊳ General Research Building I
- ㊴ General Research Building II
- ㊵ Liberal Arts Education Building
- ㊶ Organization for Research and Community Development
- ㊷ Head Office for Industry-Government Academia Collaboration
- ㊸ Next-Generation Energy Research Center
- ㊹ Center for Advanced Die Engineering and Technology
- ㊺ Composite Materials Center
- ㊻ Water Restoration Technology Research Center
- ㊼ Regional Disaster Mitigation Research Center
- ㊽ Center for Collaborative Study with Community
- ㊾ River Basin Research Center
- ㊿ Division of Genomics Research, Life Science Research Center
- 1 Division of Anaerobe Research, Life Science Research Center
- 2 Division of Animal Experiment, Life Science Research Center
- 3 Division of Instrumental Analysis, Life Science Research Center
- 4 Radioisotope Laboratory, Life Science Research Center
- 5 Information and Multimedia Center, Building A
- 6 Information and Multimedia Center, Building B
- 7 Information and Multimedia Center, Building C
- 8 International Student Center
- 9 Health Administration Center
- 10 University Hall
- 11 International House
- 12 Yanagido Hall
- 13 Kurono Student Dormitory
- 14 Auditorium
- 15 Gymnasium
- 16 Japanese Martial Arts Gymnasium
- 17 Second Gymnasium
- 18 Second Dining Hall
- 19 Gifu Pharmaceutical University Building
- 20 Gifu Foundation for Research Promotion of Healthy Aging and Drug Discovery (7th Fl.)
- 21 United Graduate School of Drug Discovery and Medical Information Sciences (8th Fl.)
- 22 Athletic Field
- 23 Ballpark
- 24 Soccer Field
- 25 Rugby Field
- 26 Tennis Court
- 27 Basketball Court
- 28 Volleyball Court
- 29 Handball Court
- 30 Swimming Pool
- 31 Kyudo Archery Field II
- 32 Equestrian Ground
- 33 Convenience Store



Area of Campus and Affiliated Facility

As of May 1, 2015

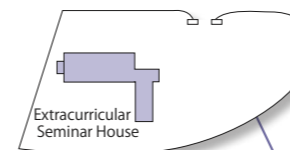
Location	Faculty and Facility	Area (m ²)	Floor Area (m ²)
Yanagido Campus	Central Administration Office	520,826	4,000
	Faculty of Education		18,676
	Faculty of Regional Studies		3,680
	Faculty of Regional Studies / Liberal Arts Education Building		13,433
	School of Medicine (Nursing Course)		7,197
	Faculty of Engineering		48,797
	Faculty of Applied Biological Sciences		27,842
	United Graduate School of Agricultural Science / United Graduate School of Veterinary Sciences		2,301
	Animal Medical Center		3,296
	University Library (including Auditorium)		8,853
	River Basin Research Center		1,112
	Life Science Research Center		2,843
	Information and Multimedia Center		2,311
	International Student Center		336
	Organization for Research and Community Development		3,906
	International House		4,285
	University Hall, Second Dining Hall, Yanagido Hall		6,465
	Facility for Sports and Extracurricular Activities		6,513
	Kurono Student Dormitory		5,045
	Nursery		249
Drainage Treatment Facility, Central Machine Room, Relay Pump Room, Outdoor Extra High Tension Power Room	1,847		
General Research Building II	5,880		
School of Medicine / University Hospital	114,424		
United Graduate School of Drug Discovery and Medical Information Sciences (8th Fl. of Gifu Pharmaceutical University Building)	124,337	(1,305)	
Subtotal	645,163	293,301 (1,305)	

Nagara	Extracurricular Seminar House	3,396	1,304
Yoshino machi	Gifu University Satellite Campus		(591)
Kano	Affiliated Elementary and Junior High Schools, Faculty of Education	30,608	13,531
Ogaki	Hayano Residence Seminar House	5,538	228
Minokamo	Gifu Field Science Center	95,832	1,590
	Minokamo Farm	(18)	
Gero	Gifu Field Science Center	5,539,302	1,103
	Kurayama Forest	(2,461)	
Takayama	Takayama Field Station, River Basin Research Center	(207,597)	750
Others	Staff Dormitory	18,442	8,813

Total		6,338,281 (210,076)	320,620 (1,896)
-------	--	---------------------	-----------------

() indicates the areas of land on lease. The number above the parenthesis does not include the land on lease.

Extracurricular Seminar House
(Nagara Ryutocho, Gifu City)
5 km from Gifu University. 15 minutes by car



Takayama Field Station, River Basin Research Center
(Iwaimachi, Takayama City)
22 km from JR Takayama Station. 50 minutes by car



Gifu University
(1-1 Yanagido, Gifu City)
7 km from JR Gifu Station. 20 minutes by car
20 km from Gifu-Hashima Station (Shinkansen Line). 40 minutes by car

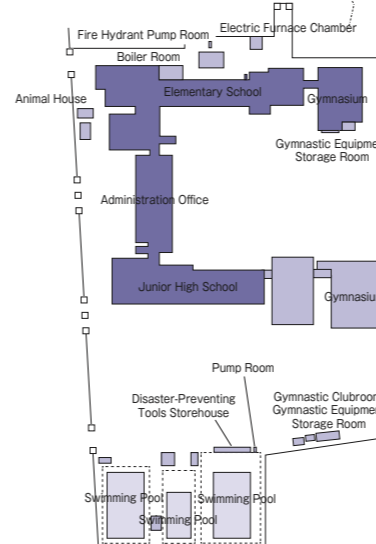
Hayano Residence Seminar House
(Hiruicho, Ogaki City)
6 km from JR Ogaki Station. 15 minutes by car



Kurayama Forest, Gifu Field Science Center
(Faculty of Applied Biological Sciences)
(Hagiwaracho, Gero City)
10 km from JR Joro Station. 20 minutes by car



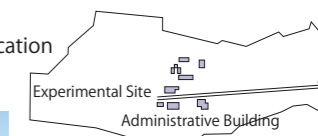
Minokamo Farm, Gifu Field Science Center
(Faculty of Applied Biological Sciences)
(Makino, Minokamo City)
6 km from JR Kobi Station. 10 minutes by car



Gifu University Satellite Campus
(4th floor of the East Tower at Gifu Skywing)
37, 6-31 Yoshinomachi, Gifu City)
Near JR Gifu Station

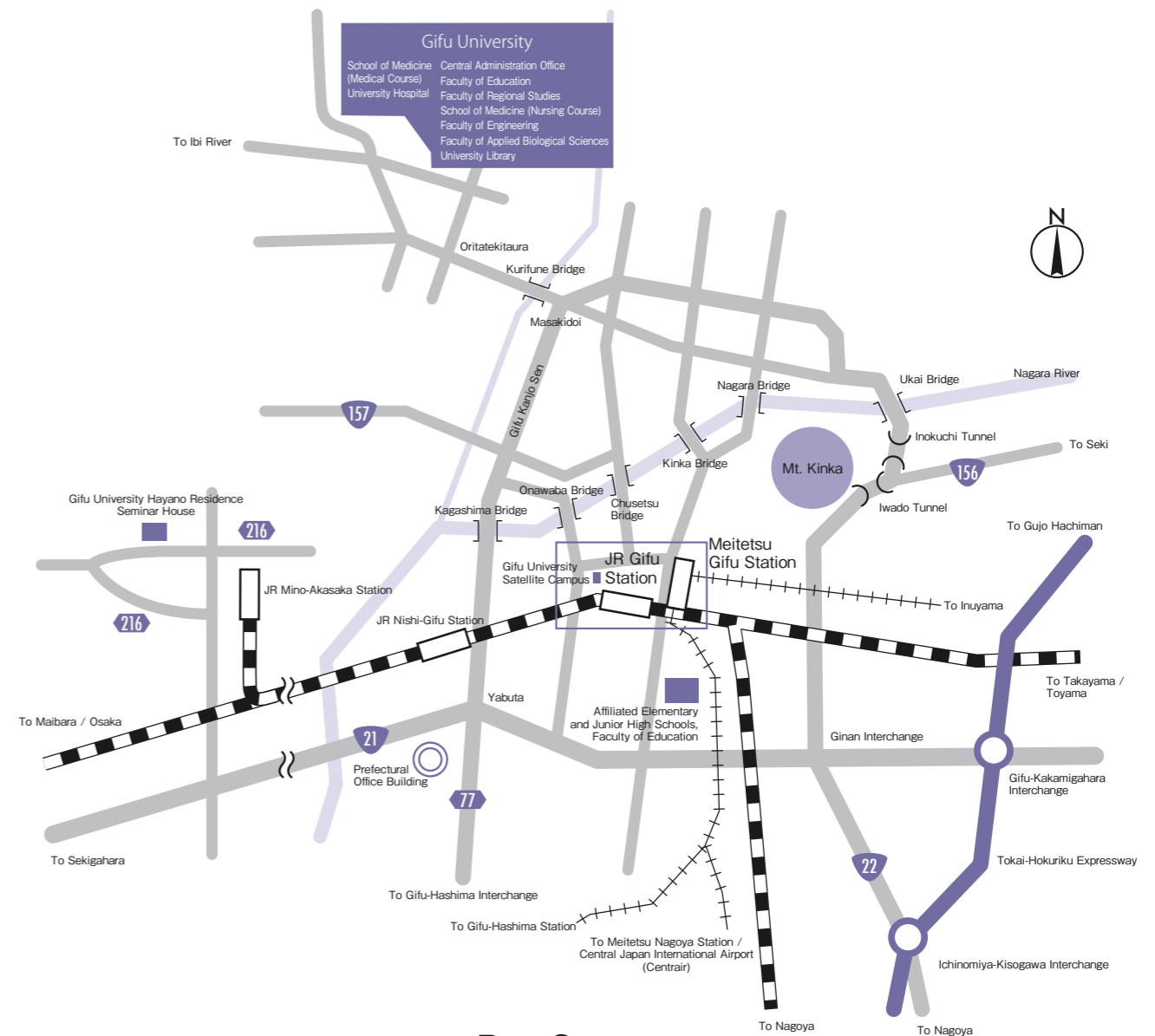


Affiliated Elementary and Junior High Schools, Faculty of Education
(Kano Otemachi, Gifu City)
1.2 km from JR Gifu Station. 5 minutes by car



Location / Access

Faculty / Center	Postcode	Address	Telephone	Fax
Yanagido Campus Central Administration Office Faculty of Education / Graduate School of Education - Special Needs Education Center Faculty of Regional Studies / Graduate School of Regional Studies Faculty of Engineering / Graduate School of Engineering - Center for Infrastructure Asset Management Technology and Research - Supporting and Development Center for Technology Education Faculty of Applied Biological Sciences / Graduate School of Applied Biological Sciences - Gifu Field Science Center - Animal Medical Center - Research Center for Wildlife Management - Comparative Cancer Center - Center for the Development and Promotion of Joint Veterinary Education - Education and Research Center for Food Animal Health United Graduate School of Agricultural Science United Graduate School of Veterinary Sciences University Library Center for Collaborative Study with Community River Basin Research Center Life Science Research Center Information and Multimedia Center International Student Center Health Administration Center Organization for Promotion of Higher Education and Student Support Organization for Research and Community Development - Next-Generation Energy Research Center - Center for Advanced Die Engineering and Technology - Composite Materials Center - Water Restoration Technology Research Center - Regional Disaster Mitigation Research Center	501-1193	1-1 Yanagido, Gifu City	230-1111	293-2021
			293-2203	293-2207
			293-2350	293-2355
			293-3002	293-3008
			293-2365	293-2389
			293-2419	293-2419
			293-2555	293-2555
			293-2834	293-2840
			293-2972	293-2977
			293-2962	293-2964
			293-2959	293-2959
			293-2884	293-2884
			293-3408	293-2841
			293-2834	293-2840
			293-2984	293-2992
			293-2987	293-2992
			293-2184	293-2194
			293-3168	293-3167
			293-2061	293-2062
			293-3171	293-3172
293-2041	293-2044			
293-2142	293-2143			
293-2174	293-2177			
293-2133	293-3382			
293-2025	293-2022			
293-2685	293-2734			
293-2496	293-2496			
293-2495	293-2495			
293-2060	293-2062			
293-3890	293-3891			
School of Medicine / Graduate School of Medicine University Hospital Medical Education Development Center United Graduate School of Drug Discovery and Medical Information Sciences	501-1194		+81-(0)58 230-6000 230-6008 230-6470 230-7602	+81-(0)58 230-6060 230-6080 230-6468 230-7604
Yoshino	500-8844	4th floor of the East Tower at Gifu Skywing 37, 6-31 Yoshinomachi, Gifu City	+81-(0)58 212-0390	+81-(0)58 212-0391
Kano	500-8482	74 Kano Otemachi, Gifu City	+81-(0)58 271-3545 271-3507	+81-(0)58 271-1816 272-3665
Ogaki	503-2216	1777 Hiruicho, Ogaki City	+81-(0)584 71-0151	+81-(0)584 71-0151
Mino	505-0016	1918-1 Makino, Minokamo City	+81-(0)574 25-2807	+81-(0)574 25-2807
Gero	509-2501	Yamanokuchi, Hagiwaracho, Gero City	+81-(0)576 54-1611	+81-(0)576 54-1477
Takayama	506-0815	919-47 Iwaimachi, Takayama City	+81-(0)577 31-1005	+81-(0)577 31-1016



Access to Gifu University

By Bus/Taxi

From JR Gifu Station/Meitetsu Gifu Station to Gifu University (7 km)

- 30 minutes by Gifu Bus • 20 minutes by taxi

By Train

Access from JR Nagoya Station/Meitetsu Nagoya Station/Kintetsu Nagoya Station

- From JR Nagoya Station to JR Gifu Station (via Tokaido Main Line): 18 minutes by the new rapid train
- From Meitetsu Nagoya Station to Meitetsu Gifu Station (via Meitetsu Nagoya Main Line): 29 minutes by the limited express train

Access from Gifu-Hashima Station (Shinkansen Line)

- Walk to Meitetsu Shin Hashima Station in front of Gifu-Hashima Station, and take a train from Meitetsu Shin Hashima Station to Meitetsu Gifu Station (via Meitetsu Hashima Line): 30 minutes
- 40 minutes to Gifu University by taxi

Access from Central Japan International Airport (Centrair)

- From Centrair to Meitetsu Gifu Station (via Meitetsu Airport Express/ μ -Sky): 57 minutes

By Car

Meishin Expressway

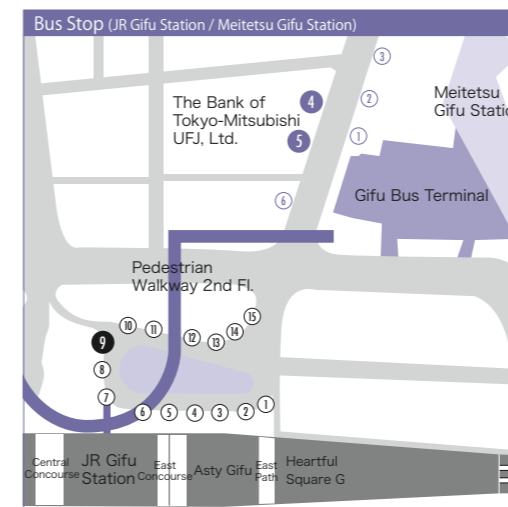
- From Gifu-Hashima Interchange (20 km)
Exit from the Gifu Hashima Interchange to Gifu Kanjo Sen (Gifu Loop Route): 40 minutes

- From Ichinomiya Interchange (25 km)
Exit from the Ichinomiya Interchange to Route 22, and travel north to the Central Gifu City: 50 minutes

Tokai-Hokuriku Expressway

- From Gifu-Kakamigahara Interchange (20 km)
Exit from the Gifu-Kakamigahara Interchange to Route 21, and travel west to Gifu Kanjo Sen (Gifu Loop Route): 40 minutes

Bus Stops



Bus Stops at JR Gifu Eki Kitaguchi (Gifu Station North Exit)				
Bus Stop	Line	Route Number	Destination	Time Required
JR Gifu - 9	Gifu University/ University Hospital	C70	Gifu University Hospital	30 minutes
JR Gifu - 9	Gifu University/ University Hospital	C71	Gifu University Hospital	25 minutes (Seiryu Liner)
JR Gifu - 9	Gifu University/ University Hospital	C72	Gifu University Hospital	25 minutes (nonstop)
JR Gifu - 9	Gifu University/ University Hospital	C72	Gifu University	30 minutes (nonstop)
JR Gifu - 9	Ginacho (via Nagara Bridge)	N45	Gifu University Hospital	35 minutes

Bus Stops at Meitetsu Gifu Station				
Bus Stop	Line	Route Number	Destination	Time Required
Meitetsu Gifu - 5	Gifu University/ University Hospital	C70	Gifu University Hospital	30 minutes
Bus Terminal - E	Gifu University/ University Hospital	C72	Gifu University Hospital	25 minutes (nonstop)
Bus Terminal - E	Gifu University/ University Hospital	C72	Gifu University	30 minutes (nonstop)
Meitetsu Gifu - 4	Ginacho (via Nagara Bridge)	N45	Gifu University Hospital	35 minutes

- All buses stop at Gifu University. Buses running via Chusetsu Bridge for Bus Route C.
- No nonstop bus service during school holidays and weekends.
- Seiryu Liner is an articulated bus which has only three stops to Gifu University (capacity: 130 passengers).



Circumhorizon Arc

Photo by Prof. Shinichi Kawakami, Faculty of Education, on May 22, 2015



Gifu University

1-1 Yanagido, Gifu City, Gifu 501-1193, JAPAN
Phone: +81-(0)58-293-2009 Fax: +81-(0)58-293-2021
e-mail: kohositu@gifu-u.ac.jp
URL <http://www.gifu-u.ac.jp/en/>

Information for International Students

Phone: +81-(0)58-293-2142 Fax: +81-(0)58-293-2143
e-mail: direcent@gifu-u.ac.jp
URL <http://www.gifu-u.ac.jp/en/international/>

International Planning Division

Phone: +81-(0)58-293-3351 Fax: +81-(0)58-293-2143
e-mail: int_exch@gifu-u.ac.jp